



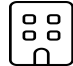




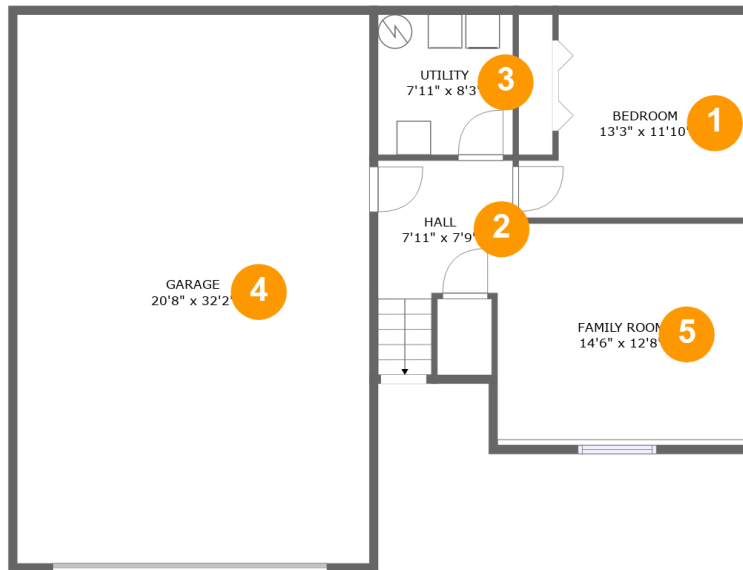
2716 Via Valdarno, Pocatello, Bannock County, Idaho, United States, 83201



Property Summary

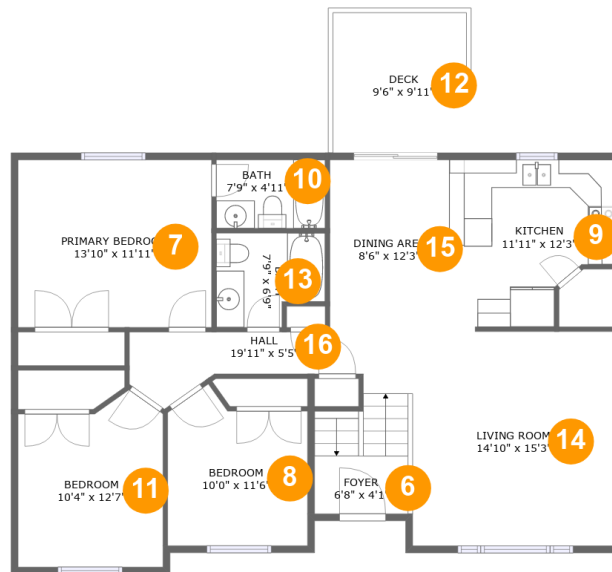
 **1** garages  **4** bedrooms  **2** bathrooms  **0** half baths

 **2** floors  **1,719** Gross Living Area sqft  **2,610** total sqft

**2716 Via Valdarno, Pocatello, Bannock County,
Idaho, United States, 83201****Room Dimensions****Floor 1****Total sqft: 1268****Living area: 472**

#	Room name	Dimensions	Area (sqft)	Counted as Living Area
1	Bedroom	13'3" x 11'10"	138 sq. ft	Yes
2	Hall	7'11" x 7'9"	73 sq. ft	Yes
3	Utility	7'11" x 8'3"	65 sq. ft	No
4	Garage	20'8" x 32'2"	664 sq. ft	No
5	Family Room	14'6" x 12'8"	188 sq. ft	Yes

2716 Via Valdarno, Pocatello, Bannock County, Idaho, United States, 83201



Room Dimensions

Floor 2

Total sqft: 1342

Living area: 1247

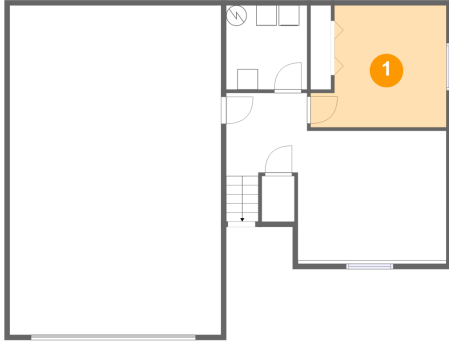
#	Room name	Dimensions	Area (sqft)	Counted as Living Area
6	Foyer	6'8" x 4'1"	56 sq. ft	Yes
7	Primary Bedroom	13'10" x 11'11"	165 sq. ft	Yes
8	Bedroom	10'0" x 11'6"	100 sq. ft	Yes
9	Kitchen	11'11" x 12'3"	124 sq. ft	Yes
10	Bath	7'9" x 4'11"	38 sq. ft	Yes
11	Bedroom	10'4" x 12'7"	117 sq. ft	Yes
12	Deck	9'6" x 9'11"	95 sq. ft	No
13	Bath	7'9" x 6'9"	47 sq. ft	Yes
14	Living Room	14'10" x 15'3"	223 sq. ft	Yes
15	Dining Area	8'6" x 12'3"	104 sq. ft	Yes
16	Hall	19'11" x 5'5"	73 sq. ft	Yes

Scan captured on Wed, 03 Jul 2024 20:45:18 GMT

Information is calculated by CubiCasa technology; deemed highly reliable but not guaranteed.

2716 Via Valdarno, Pocatello, Bannock County, Idaho, United States, 83201

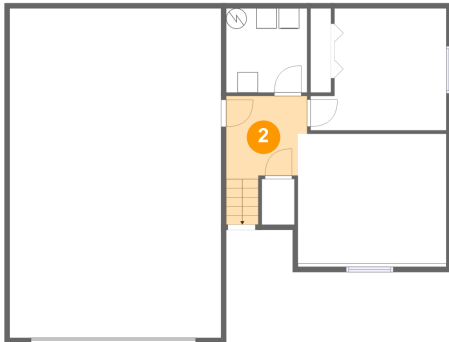
1 Floor 1 - Bedroom



Dimensions: 13'3" x 11'10"
Area: 138 sq. ft
Counted as Living Area:
Yes

Heated: Yes
Finished: Yes
Enclosed: Yes
Contiguous:
Yes
Permitted: Yes
Wet Space: No
Addition: No
Conversion: No

2 Floor 1 - Hall

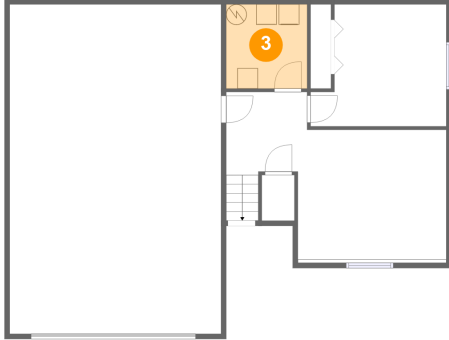


Dimensions: 7'11" x 7'9"
Area: 73 sq. ft
Counted as Living Area:
Yes

Heated: Yes
Finished: Yes
Enclosed: Yes
Contiguous:
Yes
Permitted: Yes
Wet Space: No
Addition: No
Conversion: No

**2716 Via Valdarno, Pocatello, Bannock County,
Idaho, United States, 83201**

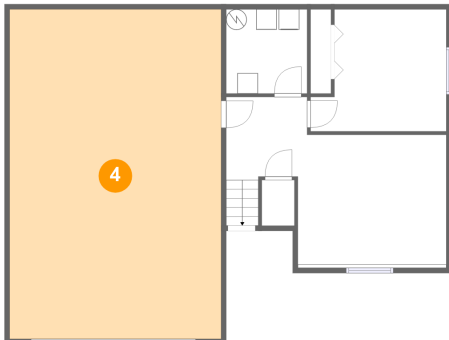
3 Floor 1 - Utility



Dimensions: 7'11" x 8'3"
Area: 65 sq. ft
Counted as Living Area: No

Heated: Yes
Finished: No
Enclosed: Yes
Contiguous: Yes
Permitted: Yes
Wet Space: No
Addition: No
Conversion: No

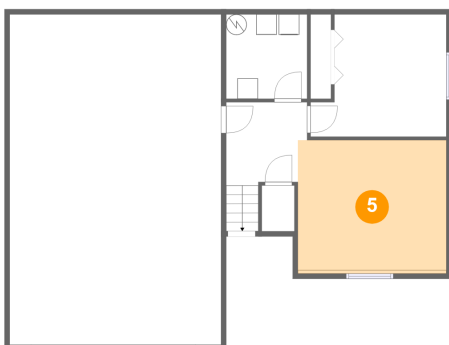
4 Floor 1 - Garage



Dimensions: 20'8" x 32'2"
Area: 664 sq. ft
Counted as Living Area: No

Heated: No
Finished: No
Enclosed: Yes
Contiguous: Yes
Permitted: Yes
Wet Space: No
Addition: No
Conversion: No

5 Floor 1 - Family Room



Dimensions: 14'6" x 12'8"
Area: 188 sq. ft
Counted as Living Area:
Yes

Heated: Yes
Finished: Yes
Enclosed: Yes
Contiguous:
Yes
Permitted: Yes
Wet Space: No
Addition: No
Conversion: No

2716 Via Valdarno, Pocatello, Bannock County, Idaho, United States, 83201

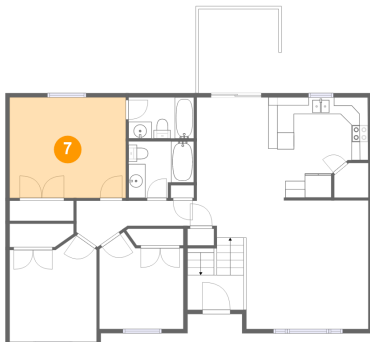
6 Floor 2 - Foyer



Dimensions: 6'8" x 4'1"
Area: 56 sq. ft
Counted as Living Area:
Yes

Heated: Yes
Finished: Yes
Enclosed: Yes
Contiguous:
Yes
Permitted: Yes
Wet Space: No
Addition: No
Conversion: No

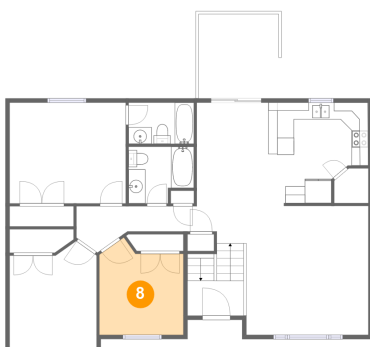
7 Floor 2 - Primary Bedroom



Dimensions: 13'10" x 11'11"
Area: 165 sq. ft
Counted as Living Area:
Yes

Heated: Yes
Finished: Yes
Enclosed: Yes
Contiguous:
Yes
Permitted: Yes
Wet Space: No
Addition: No
Conversion: No

8 Floor 2 - Bedroom



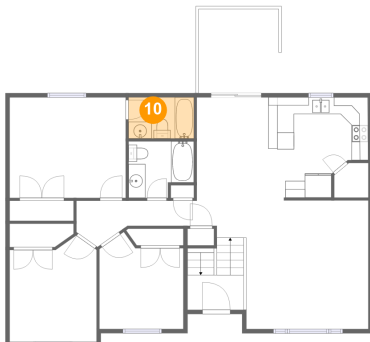
Dimensions: 10'0" x 11'6"
Area: 100 sq. ft
Counted as Living Area:
Yes

Heated: Yes
Finished: Yes
Enclosed: Yes
Contiguous:
Yes
Permitted: Yes
Wet Space: No
Addition: No
Conversion: No

**2716 Via Valdarno, Pocatello, Bannock County,
Idaho, United States, 83201****9 Floor 2 - Kitchen**

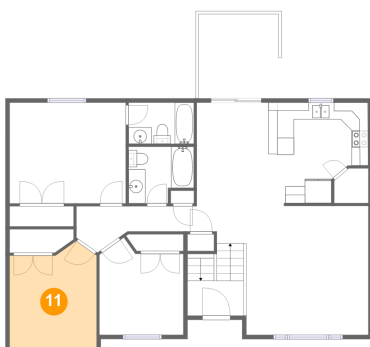
Dimensions: 11'11" x 12'3"
Area: 124 sq. ft
Counted as Living Area:
Yes

Heated: Yes
Finished: Yes
Enclosed: Yes
Contiguous:
Yes
Permitted: Yes
Wet Space: No
Addition: No
Conversion: No

10 Floor 2 - Bath

Dimensions: 7'9" x 4'11"
Area: 38 sq. ft
Counted as Living Area:
Yes

Heated: Yes
Finished: Yes
Enclosed: Yes
Contiguous:
Yes
Permitted: Yes
Wet Space: Yes
Addition: No
Conversion: No

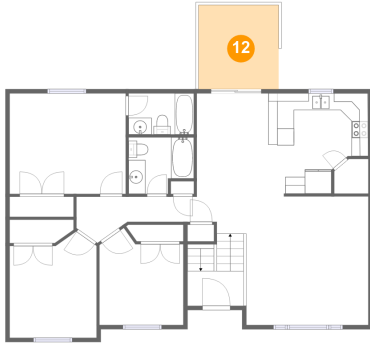
11 Floor 2 - Bedroom

Dimensions: 10'4" x 12'7"
Area: 117 sq. ft
Counted as Living Area:
Yes

Heated: Yes
Finished: Yes
Enclosed: Yes
Contiguous:
Yes
Permitted: Yes
Wet Space: No
Addition: No
Conversion: No

2716 Via Valdarno, Pocatello, Bannock County, Idaho, United States, 83201

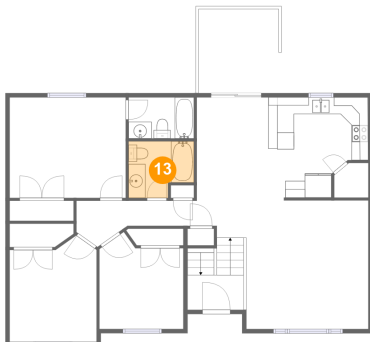
12 Floor 2 - Deck



Dimensions: 9'6" x 9'11"
Area: 95 sq. ft
Counted as Living Area: No

Heated: No
Finished: Yes
Enclosed: No
Contiguous: Yes
Permitted: Yes
Wet Space: No
Addition: No
Conversion: No

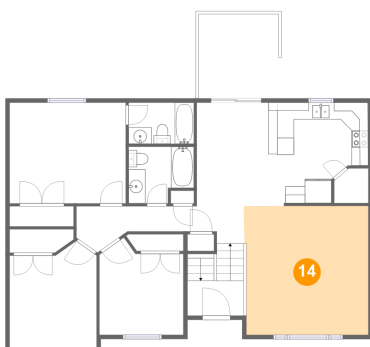
13 Floor 2 - Bath



Dimensions: 7'9" x 6'9"
Area: 47 sq. ft
Counted as Living Area: Yes

Heated: Yes
Finished: Yes
Enclosed: Yes
Contiguous: Yes
Permitted: Yes
Wet Space: Yes
Addition: No
Conversion: No

14 Floor 2 - Living Room

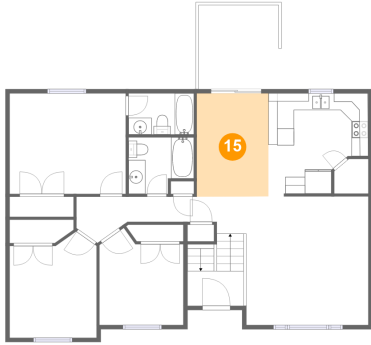


Dimensions: 14'10" x 15'3"
Area: 223 sq. ft
Counted as Living Area: Yes

Heated: Yes
Finished: Yes
Enclosed: Yes
Contiguous: Yes
Permitted: Yes
Wet Space: No
Addition: No
Conversion: No

2716 Via Valdarno, Pocatello, Bannock County, Idaho, United States, 83201

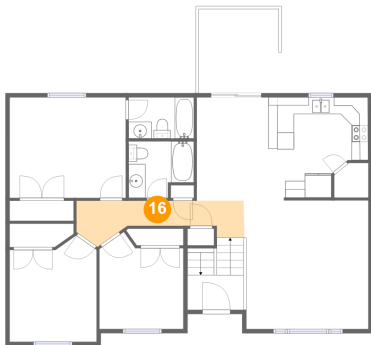
15 Floor 2 - Dining Area



Dimensions: 8'6" x 12'3"
Area: 104 sq. ft
Counted as Living Area:
Yes

Heated: Yes
Finished: Yes
Enclosed: Yes
Contiguous:
Yes
Permitted: Yes
Wet Space: No
Addition: No
Conversion: No

16 Floor 2 - Hall



Dimensions: 19'11" x 5'5"
Area: 73 sq. ft
Counted as Living Area:
Yes

Heated: Yes
Finished: Yes
Enclosed: Yes
Contiguous:
Yes
Permitted: Yes
Wet Space: No
Addition: No
Conversion: No