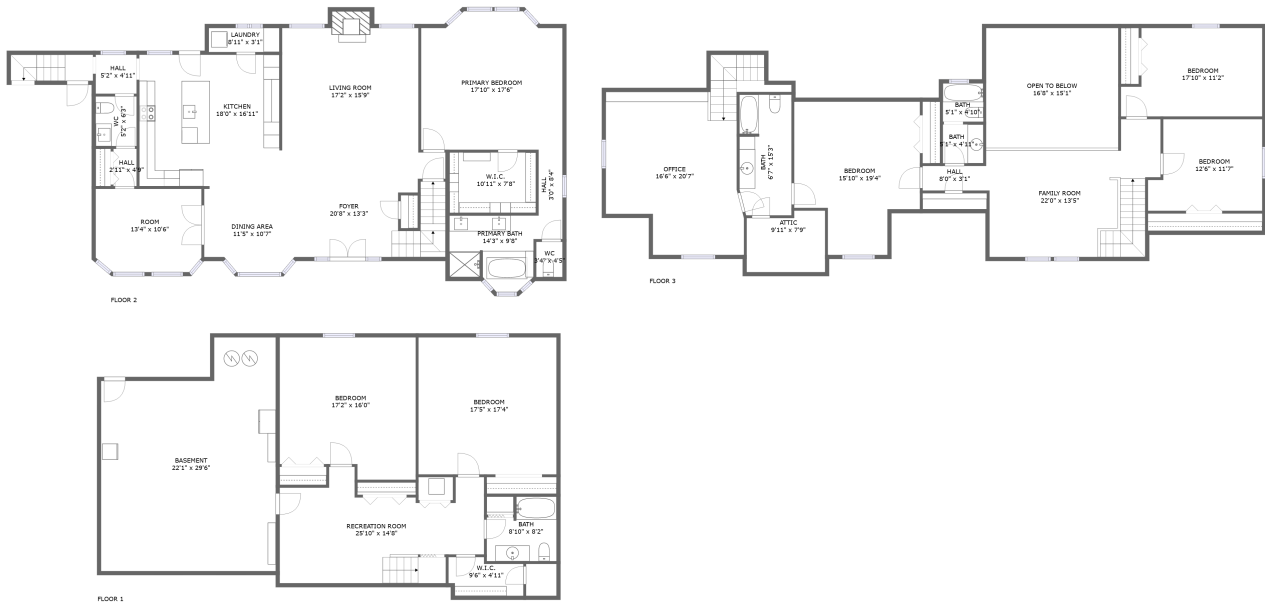



320 Old Tree Trce, Roswell, GA, US



Property summary

 **0** Garages


 **6** Bedrooms

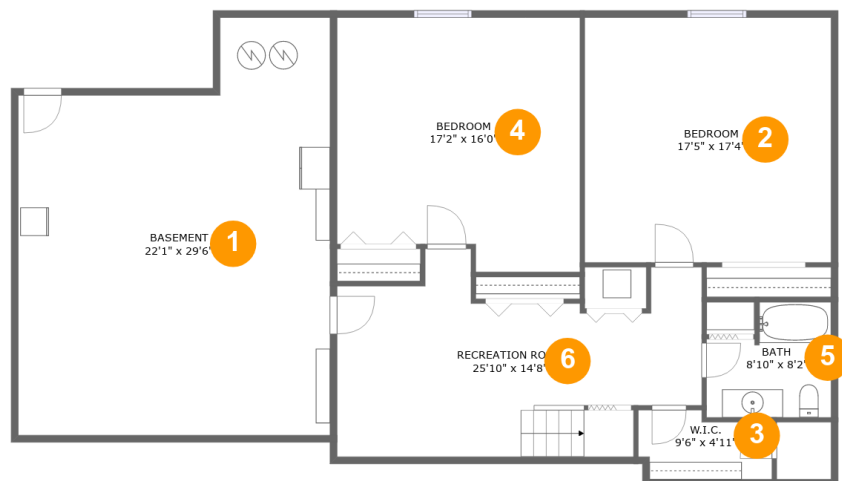
 **4** Bathrooms

 **1** Half baths

 **3** Floors

 **4,690** Gross living area sqft

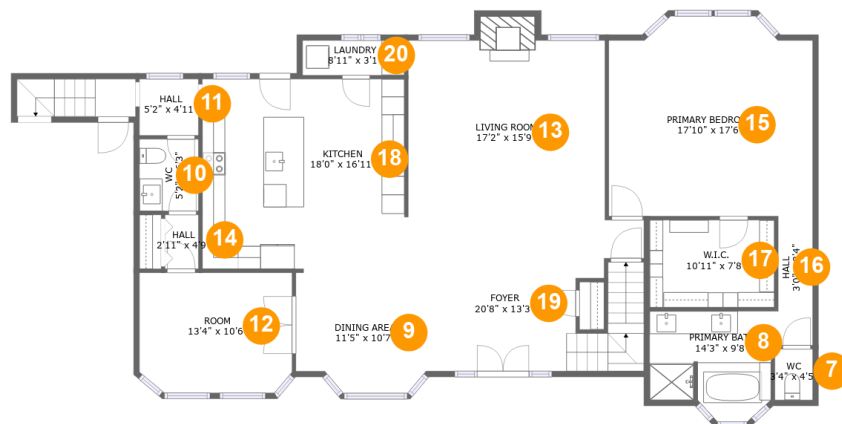
 **5,704** Total sqft

320 Old Tree Trce,Roswell,GA,US**Room dimensions**

Floor 1

Total sqft: 1785 Living area: 1127

#		Dimensions	sqft	Counted as living area
1	Basement	22'1" x 29'6"	573 sq. ft	No
2	Bedroom	17'5" x 17'4"	302 sq. ft	Yes
3	Cl	9'6" x 4'11"	41 sq. ft	Yes
4	Bedroom	17'2" x 16'0"	290 sq. ft	Yes
5	Bath	8'10" x 8'2"	62 sq. ft	Yes
6	Recreation Room	25'10" x 14'8"	287 sq. ft	Yes

320 Old Tree Trce, Roswell, GA, US**Room dimensions**

Floor 2

Total sqft: 1910 Living area: 1898

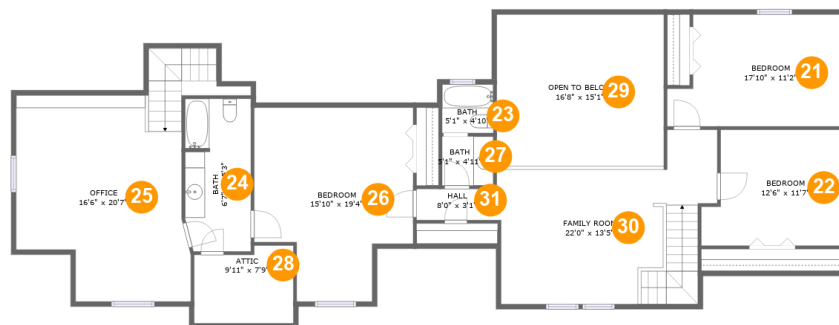
#		Dimensions	sqft	Counted as living area
7	Bath	3'4" x 4'5"	15 sq. ft	Yes
8	Bath	14'3" x 9'8"	101 sq. ft	Yes
9	Dining Room	11'5" x 10'7"	112 sq. ft	Yes
10	Bath	5'2" x 6'3"	32 sq. ft	Yes
11	Hall	5'2" x 4'11"	25 sq. ft	Yes
12	Room	13'4" x 10'6"	137 sq. ft	Yes
13	Living Room	17'2" x 15'9"	281 sq. ft	Yes
14	Hall	2'11" x 4'9"	14 sq. ft	Yes
15	Bedroom	17'10" x 17'6"	295 sq. ft	Yes
16	Hall	3'0" x 8'4"	25 sq. ft	Yes
17	Cl	10'11" x 7'8"	83 sq. ft	Yes

Scan captured on Fri, 22 Nov 2024 22:24:53 GMT

Information is calculated by Cubicasa technology deemed highly reliable but not guaranteed.

320 Old Tree Trce,Roswell,GA,US

#		Dimensions	sqft	Counted as living area
18	Kitchen	18'0" x 16'11"	298 sq. ft	Yes
19	Entry	20'8" x 13'3"	244 sq. ft	Yes
20	Utility	8'11" x 3'1"	27 sq. ft	Yes

320 Old Tree Trce, Roswell, GA, US**Room dimensions**

Floor 3

Total sqft: 2009 Living area: 1665

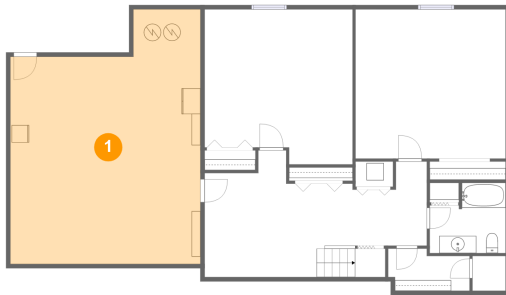
#		Dimensions	sqft	Counted as living area
21	Bedroom	17'10" x 11'2"	180 sq. ft	Yes
22	Bedroom	12'6" x 11'7"	152 sq. ft	Yes
23	Bath	5'1" x 4'10"	25 sq. ft	Yes
24	Bath	6'7" x 15'3"	98 sq. ft	Yes
25	Office	16'6" x 20'7"	351 sq. ft	Yes
26	Bedroom	15'10" x 19'4"	259 sq. ft	Yes
27	Bath	5'1" x 4'11"	25 sq. ft	Yes
28	Attic	9'11" x 7'9"	33 sq. ft	No
29	Open To Below	16'8" x 15'1"	253 sq. ft	No
30	Living Room	22'0" x 13'5"	299 sq. ft	Yes
31	Hall	8'0" x 3'1"	25 sq. ft	Yes

Scan captured on Fri, 22 Nov 2024 22:24:53 GMT

Information is calculated by Cubicasa technology deemed highly reliable but not guaranteed.

320 Old Tree Trce,Roswell,GA,US

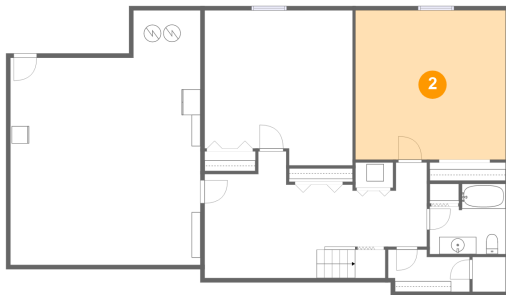
1 Floor 1 - Basement



Dimensions: 22'1" x 29'6"
Area: 573 sq. ft
Counted as living area: No

Heated: No
Finished: No
Enclosed: Yes
Contiguous: Yes
Permitted: Yes
Wet space: No
Addition: No
Conversion: No

2 Floor 1 - Bedroom



Dimensions: 17'5" x 17'4"
Area: 302 sq. ft
Counted as living area: Yes

Heated: Yes
Finished: Yes
Enclosed: Yes
Contiguous: Yes
Permitted: Yes
Wet space: No
Addition: No
Conversion: No

320 Old Tree Trce, Roswell, GA, US

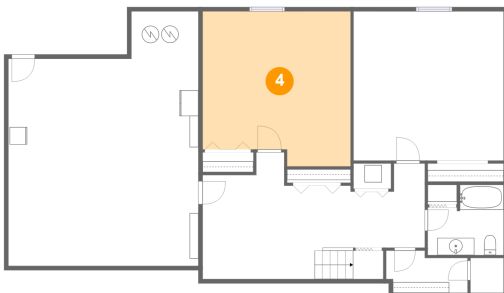
3 Floor 1 - Cl



Dimensions: 9'6" x 4'11"
Area: 41 sq. ft
Counted as living area: Yes

Heated: Yes
Finished: Yes
Enclosed: Yes
Contiguous: Yes
Permitted: Yes
Wet space: No
Addition: No
Conversion: No

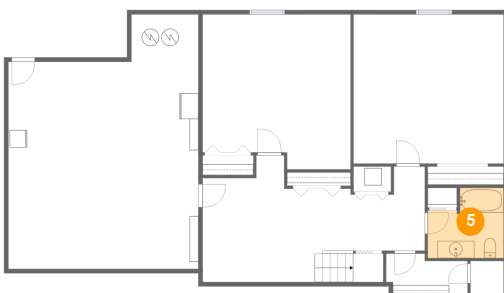
4 Floor 1 - Bedroom



Dimensions: 17'2" x 16'0"
Area: 290 sq. ft
Counted as living area: Yes

Heated: Yes
Finished: Yes
Enclosed: Yes
Contiguous: Yes
Permitted: Yes
Wet space: No
Addition: No
Conversion: No

5 Floor 1 - Bath

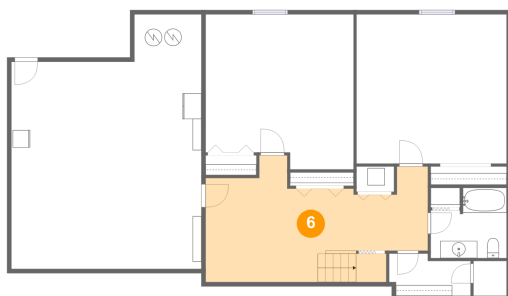


Dimensions: 8'10" x 8'2"
Area: 62 sq. ft
Counted as living area: Yes

Heated: Yes
Finished: Yes
Enclosed: Yes
Contiguous: Yes
Permitted: Yes
Wet space: Yes
Addition: No
Conversion: No

320 Old Tree Trce,Roswell,GA,US

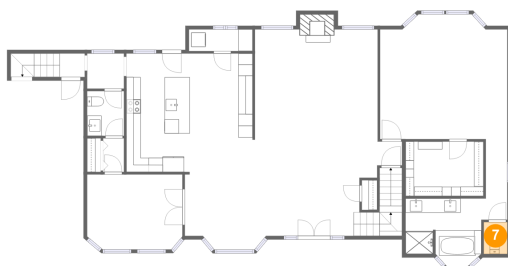
6 Floor 1 - Recreation Room



Dimensions: 25'10" x 14'8"
Area: 287 sq. ft
Counted as living area: Yes

Heated: Yes
Finished: Yes
Enclosed: Yes
Contiguous: Yes
Permitted: Yes
Wet space: No
Addition: No
Conversion: No

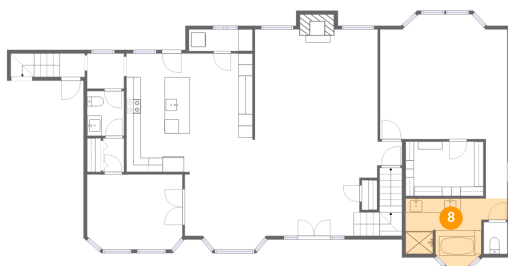
7 Floor 2 - Bath



Dimensions: 3'4" x 4'5"
Area: 15 sq. ft
Counted as living area: Yes

Heated: Yes
Finished: Yes
Enclosed: Yes
Contiguous: Yes
Permitted: Yes
Wet space: Yes
Addition: No
Conversion: No

8 Floor 2 - Bath

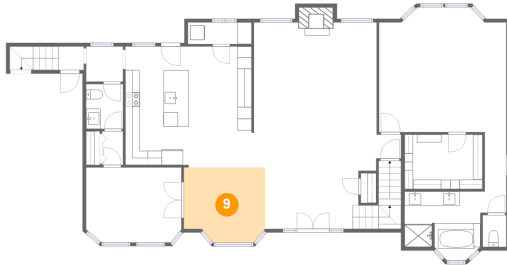


Dimensions: 14'3" x 9'8"
Area: 101 sq. ft
Counted as living area: Yes

Heated: Yes
Finished: Yes
Enclosed: Yes
Contiguous: Yes
Permitted: Yes
Wet space: Yes
Addition: No
Conversion: No

320 Old Tree Trce, Roswell, GA, US

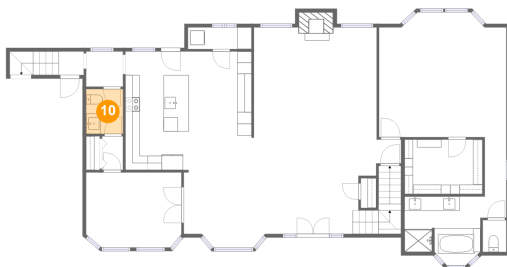
9 Floor 2 - Dining Room



Dimensions: 11'5" x 10'7"
Area: 112 sq. ft
Counted as living area: Yes

Heated: Yes
Finished: Yes
Enclosed: Yes
Contiguous: Yes
Permitted: Yes
Wet space: No
Addition: No
Conversion: No

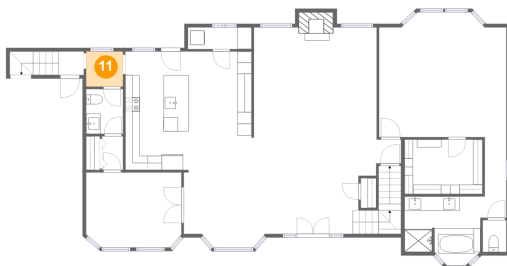
10 Floor 2 - Bath



Dimensions: 5'2" x 6'3"
Area: 32 sq. ft
Counted as living area: Yes

Heated: Yes
Finished: Yes
Enclosed: Yes
Contiguous: Yes
Permitted: Yes
Wet space: Yes
Addition: No
Conversion: No

11 Floor 2 - Hall

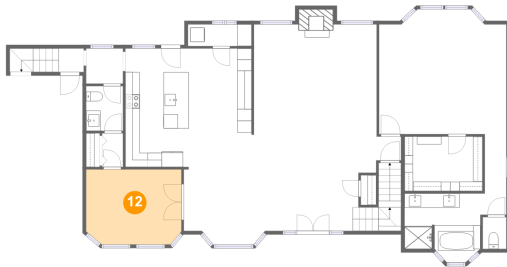


Dimensions: 5'2" x 4'11"
Area: 25 sq. ft
Counted as living area: Yes

Heated: Yes
Finished: Yes
Enclosed: Yes
Contiguous: Yes
Permitted: Yes
Wet space: No
Addition: No
Conversion: No

320 Old Tree Trce, Roswell, GA, US

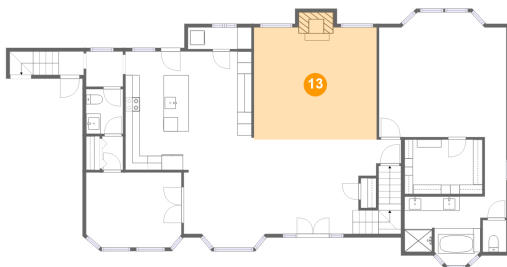
12 Floor 2 - Room



Dimensions: 13'4" x 10'6"
Area: 137 sq. ft
Counted as living area: Yes

Heated: Yes
Finished: Yes
Enclosed: Yes
Contiguous: Yes
Permitted: Yes
Wet space: No
Addition: No
Conversion: No

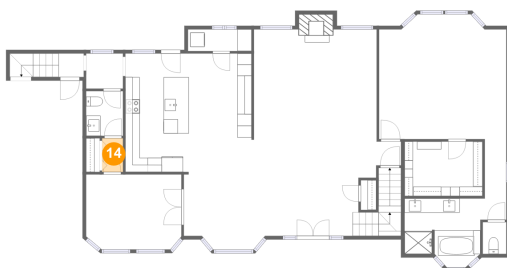
13 Floor 2 - Living Room



Dimensions: 17'2" x 15'9"
Area: 281 sq. ft
Counted as living area: Yes

Heated: Yes
Finished: Yes
Enclosed: Yes
Contiguous: Yes
Permitted: Yes
Wet space: No
Addition: No
Conversion: No

14 Floor 2 - Hall

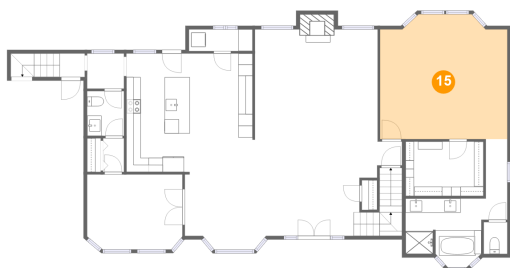


Dimensions: 2'11" x 4'9"
Area: 14 sq. ft
Counted as living area: Yes

Heated: Yes
Finished: Yes
Enclosed: Yes
Contiguous: Yes
Permitted: Yes
Wet space: No
Addition: No
Conversion: No

320 Old Tree Trce, Roswell, GA, US

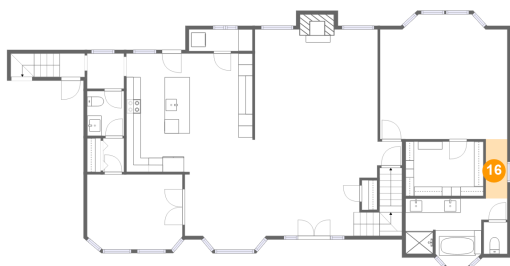
15 Floor 2 - Bedroom



Dimensions: 17'10" x 17'6"
Area: 295 sq. ft
Counted as living area: Yes

Heated: Yes
Finished: Yes
Enclosed: Yes
Contiguous: Yes
Permitted: Yes
Wet space: No
Addition: No
Conversion: No

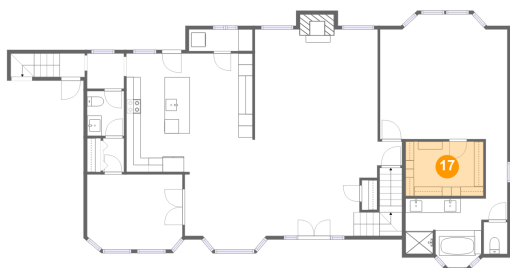
16 Floor 2 - Hall



Dimensions: 3'0" x 8'4"
Area: 25 sq. ft
Counted as living area: Yes

Heated: Yes
Finished: Yes
Enclosed: Yes
Contiguous: Yes
Permitted: Yes
Wet space: No
Addition: No
Conversion: No

17 Floor 2 - Cl

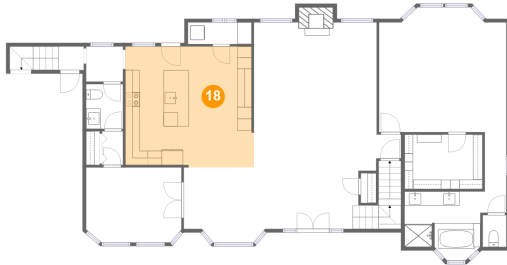


Dimensions: 10'11" x 7'8"
Area: 83 sq. ft
Counted as living area: Yes

Heated: Yes
Finished: Yes
Enclosed: Yes
Contiguous: Yes
Permitted: Yes
Wet space: No
Addition: No
Conversion: No

320 Old Tree Trce, Roswell, GA, US

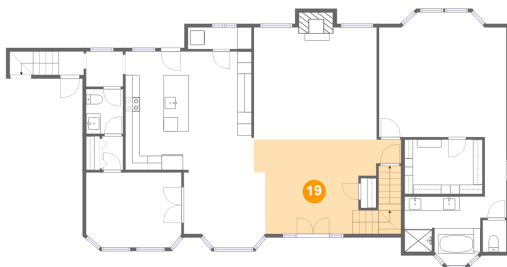
18 Floor 2 - Kitchen



Dimensions: 18'0" x 16'11"
Area: 298 sq. ft
Counted as living area: Yes

Heated: Yes
Finished: Yes
Enclosed: Yes
Contiguous: Yes
Permitted: Yes
Wet space: No
Addition: No
Conversion: No

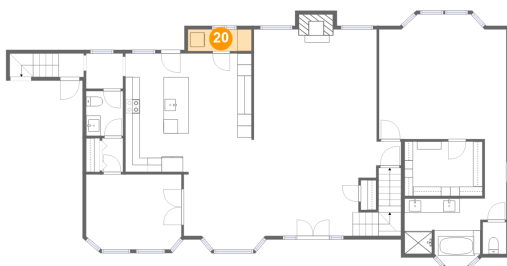
19 Floor 2 - Entry



Dimensions: 20'8" x 13'3"
Area: 244 sq. ft
Counted as living area: Yes

Heated: Yes
Finished: Yes
Enclosed: Yes
Contiguous: Yes
Permitted: Yes
Wet space: No
Addition: No
Conversion: No

20 Floor 2 - Utility

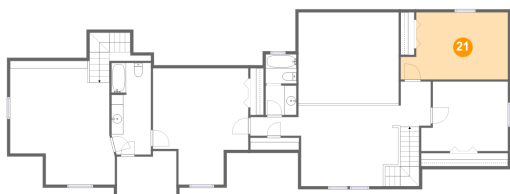


Dimensions: 8'11" x 3'1"
Area: 27 sq. ft
Counted as living area: Yes

Heated: Yes
Finished: Yes
Enclosed: Yes
Contiguous: Yes
Permitted: Yes
Wet space: No
Addition: No
Conversion: No

320 Old Tree Trce,Roswell,GA,US

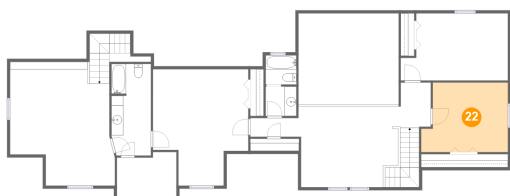
21 Floor 3 - Bedroom



Dimensions: 17'10" x 11'2"
Area: 180 sq. ft
Counted as living area: Yes

Heated: Yes
Finished: Yes
Enclosed: Yes
Contiguous: Yes
Permitted: Yes
Wet space: No
Addition: No
Conversion: No

22 Floor 3 - Bedroom



Dimensions: 12'6" x 11'7"
Area: 152 sq. ft
Counted as living area: Yes

Heated: Yes
Finished: Yes
Enclosed: Yes
Contiguous: Yes
Permitted: Yes
Wet space: No
Addition: No
Conversion: No

23 Floor 3 - Bath

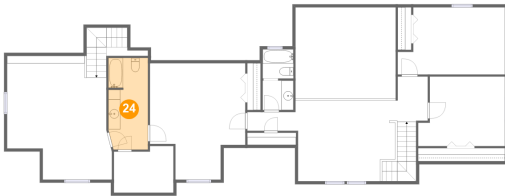


Dimensions: 5'1" x 4'10"
Area: 25 sq. ft
Counted as living area: Yes

Heated: Yes
Finished: Yes
Enclosed: Yes
Contiguous: Yes
Permitted: Yes
Wet space: Yes
Addition: No
Conversion: No

320 Old Tree Trce,Roswell,GA,US

24 Floor 3 - Bath



Dimensions: 6'7" x 15'3"
Area: 98 sq. ft
Counted as living area: Yes

Heated: Yes
Finished: Yes
Enclosed: Yes
Contiguous: Yes
Permitted: Yes
Wet space: Yes
Addition: No
Conversion: No

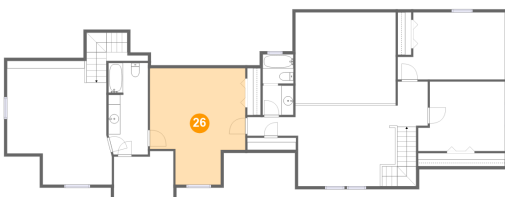
25 Floor 3 - Office



Dimensions: 16'6" x 20'7"
Area: 351 sq. ft
Counted as living area: Yes

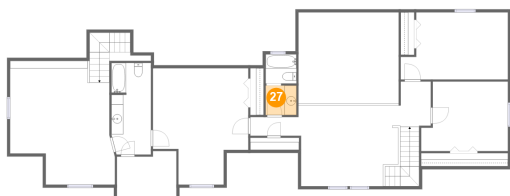
Heated: Yes
Finished: Yes
Enclosed: Yes
Contiguous: Yes
Permitted: Yes
Wet space: No
Addition: No
Conversion: No

26 Floor 3 - Bedroom



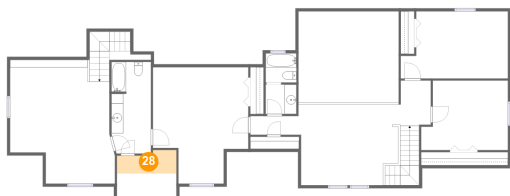
Dimensions: 15'10" x 19'4"
Area: 259 sq. ft
Counted as living area: Yes

Heated: Yes
Finished: Yes
Enclosed: Yes
Contiguous: Yes
Permitted: Yes
Wet space: No
Addition: No
Conversion: No

320 Old Tree Trce,Roswell,GA,US**27 Floor 3 - Bath**

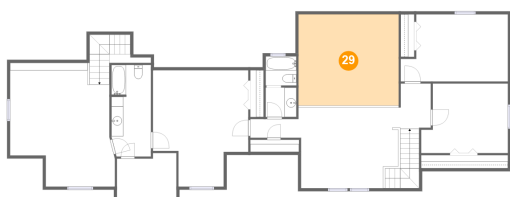
Dimensions: 5'1" x 4'11"
Area: 25 sq. ft
Counted as living area: Yes

Heated: Yes
Finished: Yes
Enclosed: Yes
Contiguous: Yes
Permitted: Yes
Wet space: Yes
Addition: No
Conversion: No

28 Floor 3 - Attic

Dimensions: 9'11" x 7'9"
Area: 33 sq. ft
Counted as living area: No

Heated: No
Finished: No
Enclosed: Yes
Contiguous: Yes
Permitted: Yes
Wet space: No
Addition: No
Conversion: No

29 Floor 3 - Open To Below

Dimensions: 16'8" x 15'1"
Area: 253 sq. ft
Counted as living area: No

Heated: No
Finished: No
Enclosed: No
Contiguous: Yes
Permitted: No
Wet space: No
Addition: No
Conversion: No

320 Old Tree Trce,Roswell,GA,US

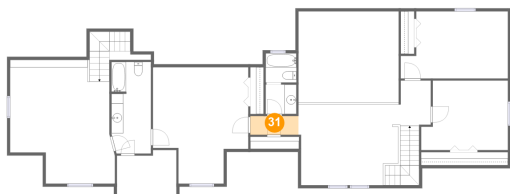
30 Floor 3 - Living Room



Dimensions: 22'0" x 13'5"
Area: 299 sq. ft
Counted as living area: Yes

Heated: Yes
Finished: Yes
Enclosed: Yes
Contiguous: Yes
Permitted: Yes
Wet space: No
Addition: No
Conversion: No

31 Floor 3 - Hall



Dimensions: 8'0" x 3'1"
Area: 25 sq. ft
Counted as living area: Yes

Heated: Yes
Finished: Yes
Enclosed: Yes
Contiguous: Yes
Permitted: Yes
Wet space: No
Addition: No
Conversion: No