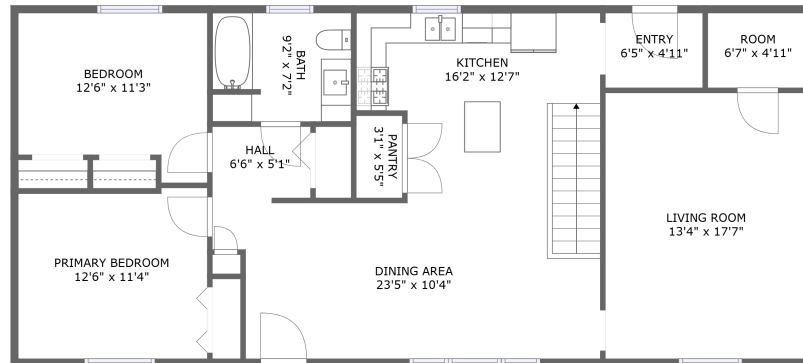
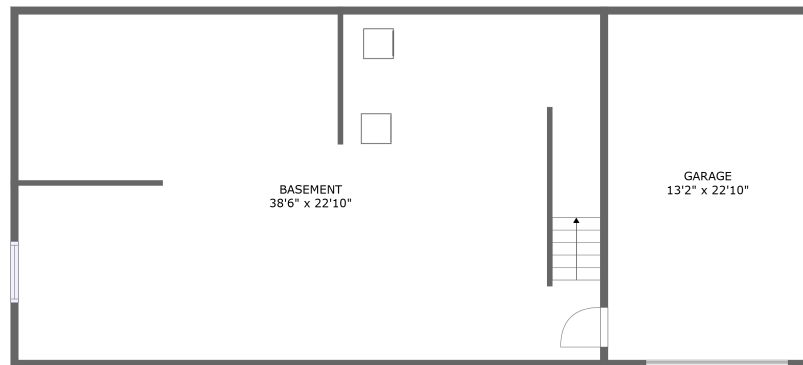


1820 10th Ave, Belle Fourche, SD, US




FLOOR 2



FLOOR 1

Property summary

 **1** Garages

 **2** Bedrooms

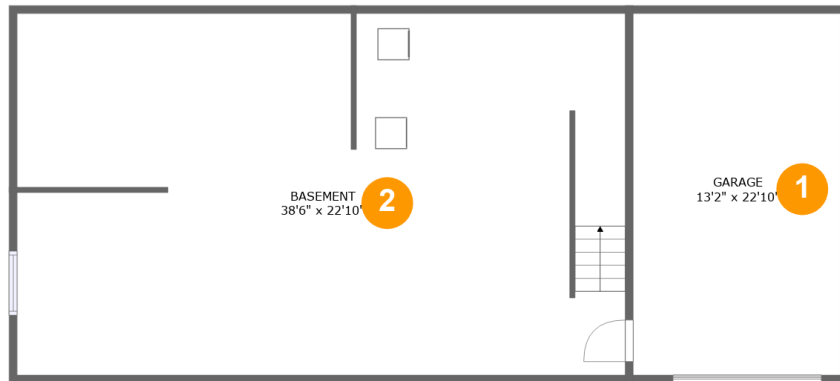
 **1** Bathrooms

 **0** Half baths

 **2** Floors

 **1,268**
Gross living
area sqft

 **2,537**
Total sqft

1820 10th Ave, Belle Fourche, SD, US

Room dimensions

Floor 1

Total sqft: 1269

Living area: 0

#		Dimensions	sqft	Counted as living area
1	Garage	13'2" x 22'10"	301 sq. ft	No
2	Basement	38'6" x 22'10"	874 sq. ft	No

1820 10th Ave, Belle Fourche, SD, US

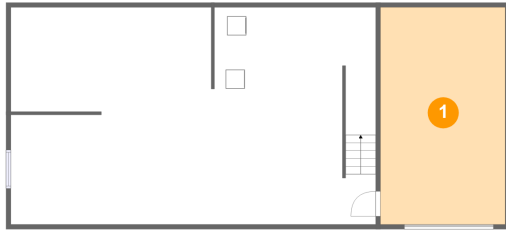
Room dimensions

Floor 2

Total sqft: 1268 Living area: 1268

#		Dimensions	sqft	Counted as living area
3	Bath	9'2" x 7'2"	65 sq. ft	Yes
4	Primary Bedroom	12'6" x 11'4"	138 sq. ft	Yes
5	Living Room	13'4" x 17'7"	234 sq. ft	Yes
6	Pantry	3'1" x 5'5"	17 sq. ft	Yes
7	Room	6'7" x 4'11"	32 sq. ft	Yes
8	Entry	6'5" x 4'11"	32 sq. ft	Yes
9	Kitchen	16'2" x 12'7"	195 sq. ft	Yes
10	Bedroom	12'6" x 11'3"	123 sq. ft	Yes
11	Dining Area	23'5" x 10'4"	235 sq. ft	Yes
12	Hall	6'6" x 5'1"	32 sq. ft	Yes

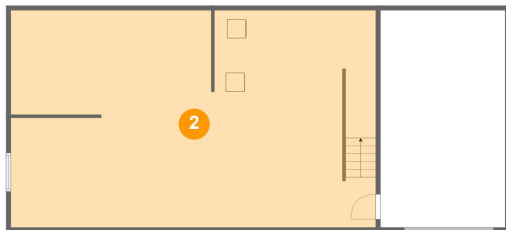
1 Floor 1 - Garage



Dimensions: 13'2" x 22'10"
Area: 301 sq. ft
Counted as living area: No

Heated: No
Finished: No
Enclosed: Yes
Contiguous: Yes
Permitted: Yes
Wet space: No
Addition: No
Conversion: No

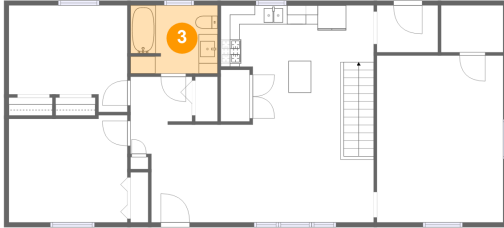
2 Floor 1 - Basement



Dimensions: 38'6" x 22'10"
Area: 874 sq. ft
Counted as living area: No

Heated: Yes
Finished: No
Enclosed: Yes
Contiguous: Yes
Permitted: Yes
Wet space: No
Addition: No
Conversion: No

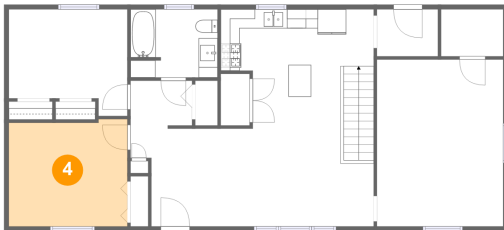
3 Floor 2 - Bath



Dimensions: 9'2" x 7'2"
Area: 65 sq. ft
Counted as living area: Yes

Heated: Yes
Finished: Yes
Enclosed: Yes
Contiguous: Yes
Permitted: Yes
Wet space: Yes
Addition: No
Conversion: No

4 Floor 2 - Primary Bedroom



Dimensions: 12'6" x 11'4"
Area: 138 sq. ft
Counted as living area: Yes

Heated: Yes
Finished: Yes
Enclosed: Yes
Contiguous: Yes
Permitted: Yes
Wet space: No
Addition: No
Conversion: No

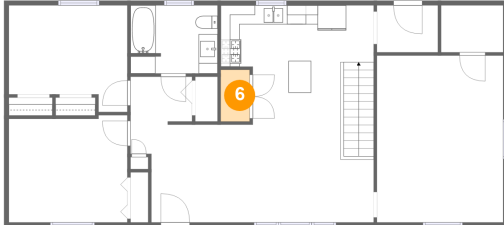
5 Floor 2 - Living Room



Dimensions: 13'4" x 17'7"
Area: 234 sq. ft
Counted as living area: Yes

Heated: Yes
Finished: Yes
Enclosed: Yes
Contiguous: Yes
Permitted: Yes
Wet space: No
Addition: No
Conversion: No

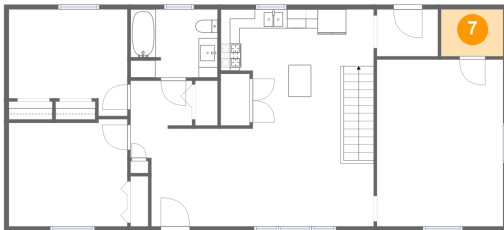
6 Floor 2 - Pantry



Dimensions: 3'1" x 5'5"
Area: 17 sq. ft
Counted as living area: Yes

Heated: Yes
Finished: Yes
Enclosed: Yes
Contiguous: Yes
Permitted: Yes
Wet space: No
Addition: No
Conversion: No

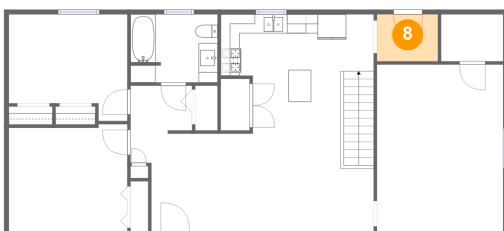
7 Floor 2 - Room



Dimensions: 6'7" x 4'11"
Area: 32 sq. ft
Counted as living area: Yes

Heated: Yes
Finished: Yes
Enclosed: Yes
Contiguous: Yes
Permitted: Yes
Wet space: No
Addition: No
Conversion: No

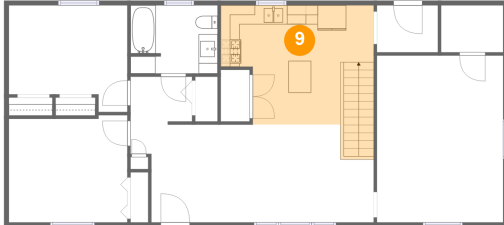
8 Floor 2 - Entry



Dimensions: 6'5" x 4'11"
Area: 32 sq. ft
Counted as living area: Yes

Heated: Yes
Finished: Yes
Enclosed: Yes
Contiguous: Yes
Permitted: Yes
Wet space: No
Addition: No
Conversion: No

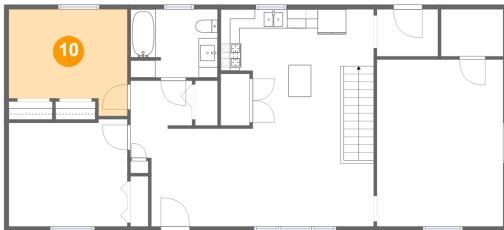
9 Floor 2 - Kitchen



Dimensions: 16'2" x 12'7"
Area: 195 sq. ft
Counted as living area: Yes

Heated: Yes
Finished: Yes
Enclosed: Yes
Contiguous: Yes
Permitted: Yes
Wet space: No
Addition: No
Conversion: No

10 Floor 2 - Bedroom



Dimensions: 12'6" x 11'3"
Area: 123 sq. ft
Counted as living area: Yes

Heated: Yes
Finished: Yes
Enclosed: Yes
Contiguous: Yes
Permitted: Yes
Wet space: No
Addition: No
Conversion: No

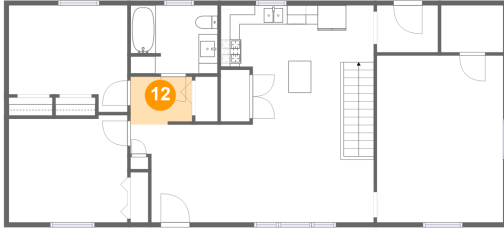
11 Floor 2 - Dining Area



Dimensions: 23'5" x 10'4"
Area: 235 sq. ft
Counted as living area: Yes

Heated: Yes
Finished: Yes
Enclosed: Yes
Contiguous: Yes
Permitted: Yes
Wet space: No
Addition: No
Conversion: No

12 Floor 2 - Hall



Dimensions: 6'6" x 5'1"
Area: 32 sq. ft
Counted as living area: Yes

Heated: Yes
Finished: Yes
Enclosed: Yes
Contiguous: Yes
Permitted: Yes
Wet space: No
Addition: No
Conversion: No