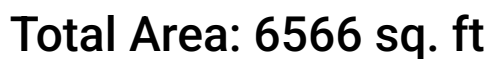


**180 Island View Drive, Penhook, Franklin County, Virginia,  
United States, 24137**



Excluded: Room Electrical 190 sq. ft, Outdoor Patio Covered 1461 sq. ft, Garage 814 sq. ft, Outdoor Porch 69 sq. ft, Undefined 3 sq. ft

## Property summary



Home report

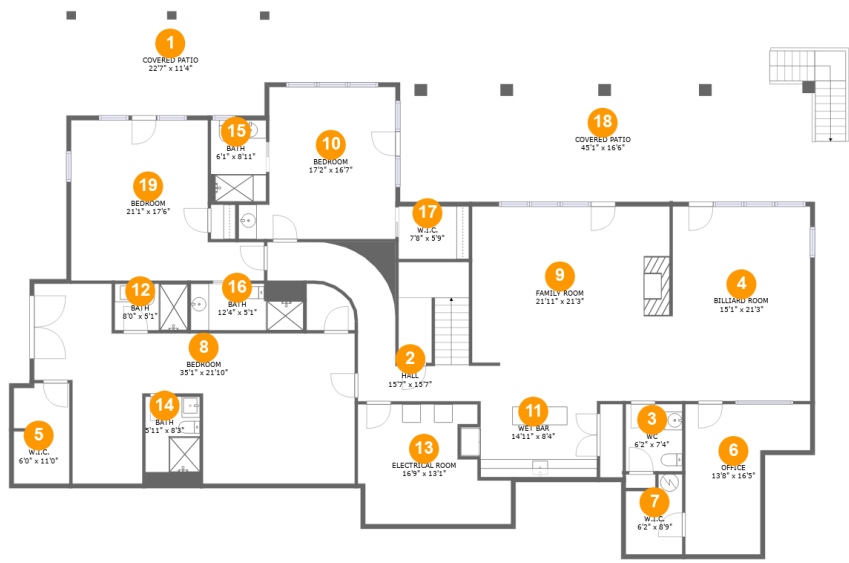
180 Island View Drive, Penhook, Franklin County, Virginia,  
United States, 24137

 **2**  
Half baths

 **1**  
Garages

Home report

180 Island View Drive, Penhook, Franklin County, Virginia,  
United States, 24137



Room dimensions

Floor 1 Total:3053sqft Excluded: 1045sqft

#		Max Dimensions	sqft	Included
1	Covered Patio	22'7" x 11'4"	255 sq. ft	No
2	Hall	15'7" x 15'7"	269 sq. ft	Yes
3	WC	6'2" x 7'4"	45 sq. ft	Yes
4	Billiard Room	15'1" x 21'3"	320 sq. ft	Yes
5	W.I.C.	6'0" x 11'0"	65 sq. ft	Yes
6	Office	13'8" x 16'5"	162 sq. ft	Yes
7	W.I.C.	6'2" x 8'9"	48 sq. ft	Yes
8	Bedroom	35'1" x 21'10"	509 sq. ft	Yes
9	Family Room	21'11" x 21'3"	449 sq. ft	Yes
10	Bedroom	17'2" x 16'7"	242 sq. ft	Yes
11	Wet Bar	14'11" x 8'4"	113 sq. ft	Yes

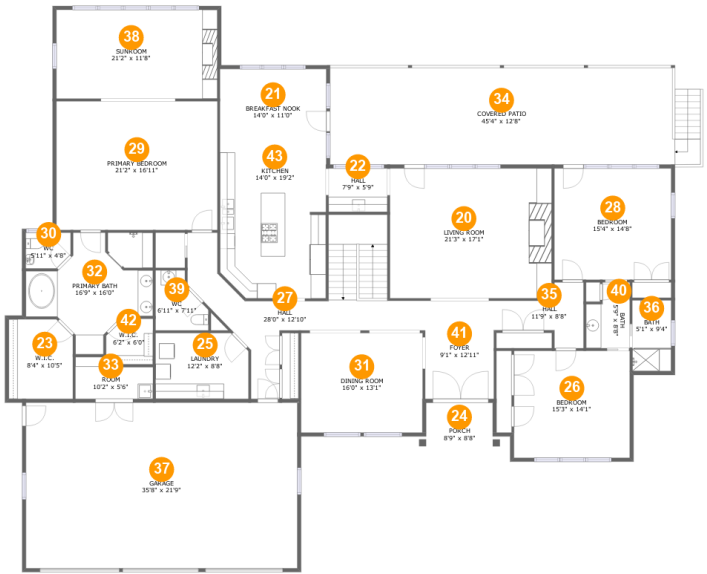
Home report

**180 Island View Drive, Penhook, Franklin County, Virginia,  
United States, 24137**

#		Max Dimensions	sqft	Included
12	Bath	8'0" x 5'1"	41 sq. ft	Yes
13	Electrical Room	16'9" x 13'1"	177 sq. ft	No
14	Bath	5'11" x 8'3"	57 sq. ft	Yes
15	Bath	6'1" x 8'11"	54 sq. ft	Yes
16	Bath	12'4" x 5'1"	55 sq. ft	Yes
17	W.I.C.	7'8" x 5'9"	44 sq. ft	Yes
18	Covered Patio	45'1" x 16'6"	602 sq. ft	No
19	Bedroom	21'1" x 17'6"	288 sq. ft	Yes

Home report

180 Island View Drive, Penhook, Franklin County, Virginia,  
United States, 24137



Room dimensions

Floor 2 Total:3513sqft Excluded: 1492sqft

#		Max Dimensions	sqft	Included
20	Living Room	21'3" x 17'1"	363 sq. ft	Yes
21	Breakfast Nook	14'0" x 11'0"	153 sq. ft	Yes
22	Hall	7'9" x 5'9"	44 sq. ft	Yes
23	W.I.C.	8'4" x 10'5"	86 sq. ft	Yes
24	Porch	8'9" x 8'8"	69 sq. ft	No
25	Laundry	12'2" x 8'8"	103 sq. ft	Yes
26	Bedroom	15'3" x 14'1"	214 sq. ft	Yes
27	Hall	28'0" x 12'10"	270 sq. ft	Yes
28	Bedroom	15'4" x 14'8"	225 sq. ft	Yes
29	Primary Bedroom	21'2" x 16'11"	358 sq. ft	Yes
30	WC	5'11" x 4'8"	26 sq. ft	Yes

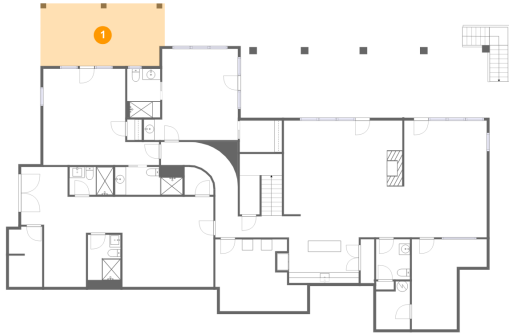
## Home report

**180 Island View Drive, Penhook, Franklin County, Virginia,  
United States, 24137**

#		Max Dimensions	sqft	Included
31	Dining Room	16'0" x 13'1"	209 sq. ft	Yes
32	Primary Bath	16'9" x 16'0"	177 sq. ft	Yes
33	Room	10'2" x 5'6"	48 sq. ft	Yes
34	Covered Patio	45'4" x 12'8"	606 sq. ft	No
35	Hall	11'9" x 8'8"	64 sq. ft	Yes
36	Bath	5'1" x 9'4"	48 sq. ft	Yes
37	Garage	35'8" x 21'9"	776 sq. ft	No
38	Sunroom	21'2" x 11'8"	247 sq. ft	Yes
39	WC	6'11" x 7'11"	44 sq. ft	Yes
40	Bath	5'9" x 8'8"	44 sq. ft	Yes
41	Foyer	9'1" x 12'11"	116 sq. ft	Yes
42	W.I.C.	6'2" x 6'0"	35 sq. ft	Yes
43	Kitchen	14'0" x 19'2"	261 sq. ft	Yes

180 Island View Drive, Penhook, Franklin County, Virginia,  
United States, 24137

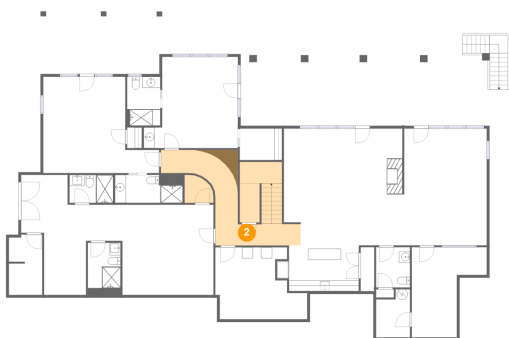
## 1 Floor 1 - Covered Patio



Max Dimensions: 22'7" x  
11'4"  
Calculated Area: 255 sq. ft  
Included: No

Heated: No  
Finished: Yes  
Enclosed: No  
Contiguous:  
Yes  
Permitted: Yes  
Wet space: No  
Addition: No  
Conversion: No

## 2 Floor 1 - Hall

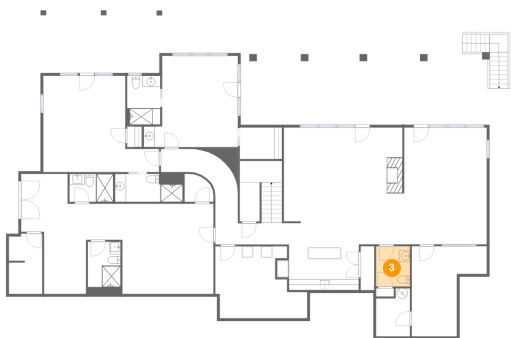


Max Dimensions: 15'7" x  
15'7"  
Calculated Area: 269 sq. ft  
Included: Yes

Heated: Yes  
Finished: Yes  
Enclosed: Yes  
Contiguous:  
Yes  
Permitted: Yes  
Wet space: No  
Addition: No  
Conversion: No

180 Island View Drive, Penhook, Franklin County, Virginia,  
United States, 24137

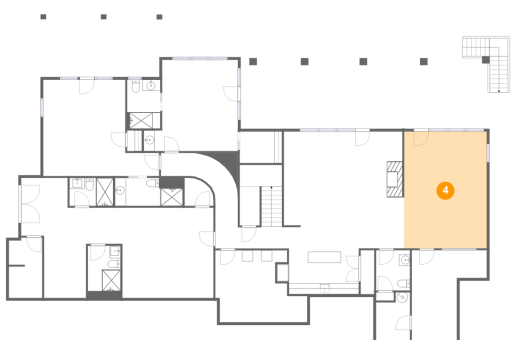
3 Floor 1 - WC



Max Dimensions: 6'2" x 7'4"  
Calculated Area: 45 sq. ft  
Included: Yes

Heated: Yes  
Finished: Yes  
Enclosed: Yes  
Contiguous: Yes  
Permitted: Yes  
Wet space: Yes  
Addition: No  
Conversion: No

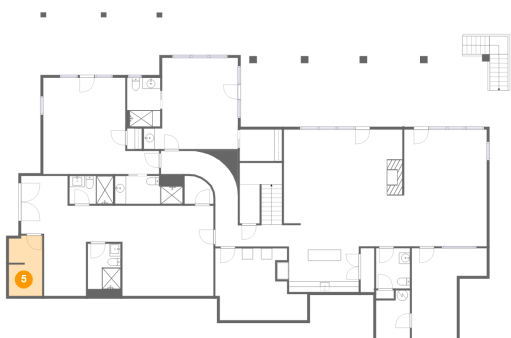
4 Floor 1 - Billiard Room



Max Dimensions: 15'1" x 21'3"  
Calculated Area: 320 sq. ft  
Included: Yes

Heated: Yes  
Finished: Yes  
Enclosed: Yes  
Contiguous: Yes  
Permitted: Yes  
Wet space: No  
Addition: No  
Conversion: No

5 Floor 1 - W.I.C.



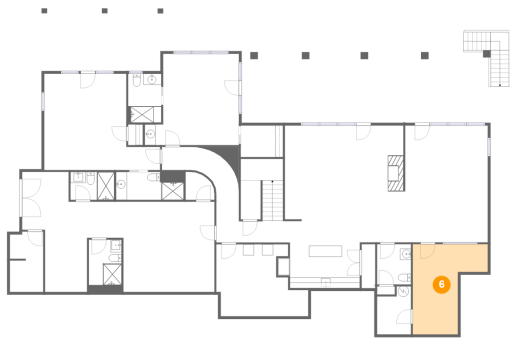
Max Dimensions: 6'0" x 11'0"  
Calculated Area: 65 sq. ft  
Included: Yes

Heated: Yes  
Finished: Yes  
Enclosed: Yes  
Contiguous: Yes  
Permitted: Yes  
Wet space: No  
Addition: No  
Conversion: No



180 Island View Drive, Penhook, Franklin County, Virginia,  
United States, 24137

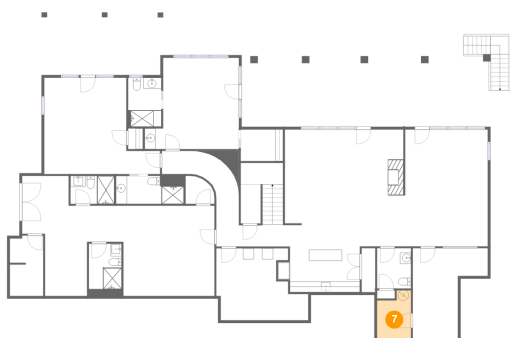
## 6 Floor 1 - Office



Max Dimensions: 13'8" x 16'5"  
Calculated Area: 162 sq. ft  
Included: Yes

Heated: Yes  
Finished: Yes  
Enclosed: Yes  
Contiguous: Yes  
Permitted: Yes  
Wet space: No  
Addition: No  
Conversion: No

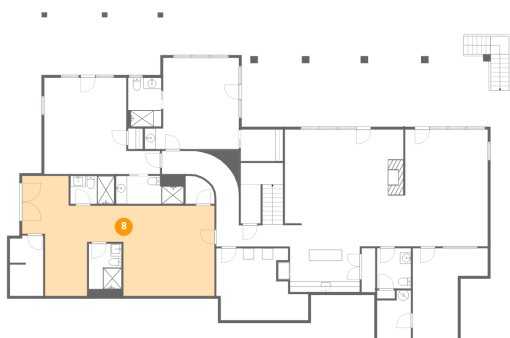
## 7 Floor 1 - W.I.C.



Max Dimensions: 6'2" x 8'9"  
Calculated Area: 48 sq. ft  
Included: Yes

Heated: Yes  
Finished: Yes  
Enclosed: Yes  
Contiguous: Yes  
Permitted: Yes  
Wet space: No  
Addition: No  
Conversion: No

## 8 Floor 1 - Bedroom



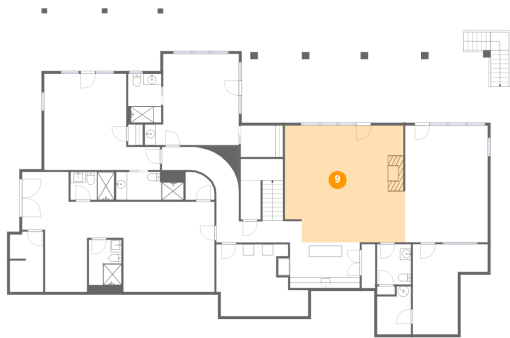
Max Dimensions: 35'1" x 21'10"  
Calculated Area: 509 sq. ft  
Included: Yes

Heated: Yes  
Finished: Yes  
Enclosed: Yes  
Contiguous: Yes  
Permitted: Yes  
Wet space: No  
Addition: No  
Conversion: No

## Home report

180 Island View Drive, Penhook, Franklin County, Virginia,  
United States, 24137

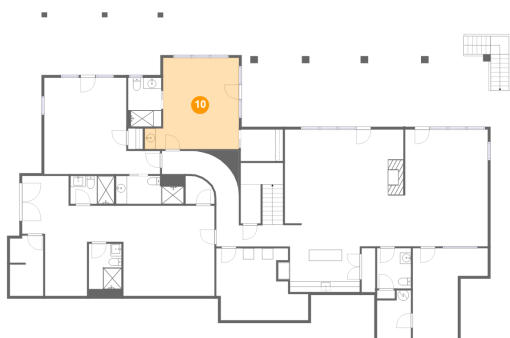
### 9 Floor 1 - Family Room



Max Dimensions: 21'11" x 21'3"  
Calculated Area: 449 sq. ft  
Included: Yes

Heated: Yes  
Finished: Yes  
Enclosed: Yes  
Contiguous: Yes  
Permitted: Yes  
Wet space: No  
Addition: No  
Conversion: No

### 10 Floor 1 - Bedroom



Max Dimensions: 17'2" x 16'7"  
Calculated Area: 242 sq. ft  
Included: Yes

Heated: Yes  
Finished: Yes  
Enclosed: Yes  
Contiguous: Yes  
Permitted: Yes  
Wet space: No  
Addition: No  
Conversion: No

### 11 Floor 1 - Wet Bar



Max Dimensions: 14'11" x 8'4"  
Calculated Area: 113 sq. ft  
Included: Yes

Heated: Yes  
Finished: Yes  
Enclosed: Yes  
Contiguous: Yes  
Permitted: Yes  
Wet space: No  
Addition: No  
Conversion: No

## Home report

180 Island View Drive, Penhook, Franklin County, Virginia,  
United States, 24137

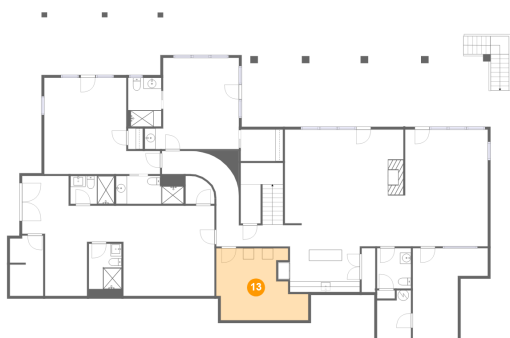
### 12 Floor 1 - Bath



Max Dimensions: 8'0" x 5'1"  
Calculated Area: 41 sq. ft  
Included: Yes

Heated: Yes  
Finished: Yes  
Enclosed: Yes  
Contiguous: Yes  
Permitted: Yes  
Wet space: Yes  
Addition: No  
Conversion: No

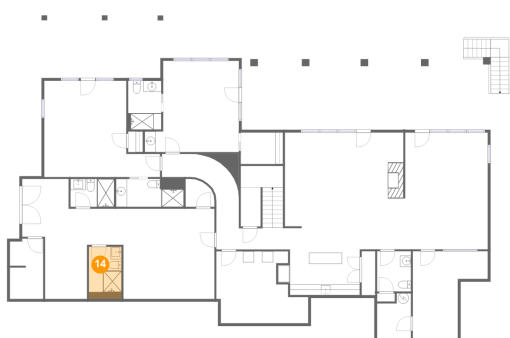
### 13 Floor 1 - Electrical Room



Max Dimensions: 16'9" x 13'1"  
Calculated Area: 177 sq. ft  
Included: No

Heated: No  
Finished: No  
Enclosed: Yes  
Contiguous: Yes  
Permitted: Yes  
Wet space: No  
Addition: No  
Conversion: No

### 14 Floor 1 - Bath



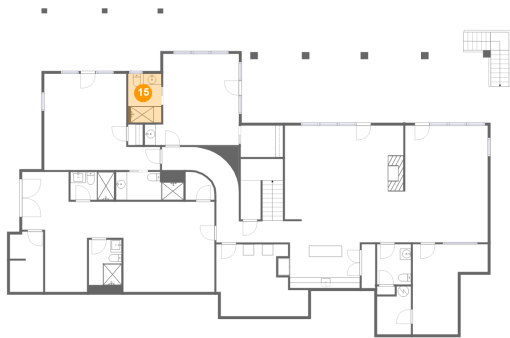
Max Dimensions: 5'11" x 8'3"  
Calculated Area: 57 sq. ft  
Included: Yes

Heated: Yes  
Finished: Yes  
Enclosed: Yes  
Contiguous: Yes  
Permitted: Yes  
Wet space: Yes  
Addition: No  
Conversion: No

## Home report

180 Island View Drive, Penhook, Franklin County, Virginia,  
United States, 24137

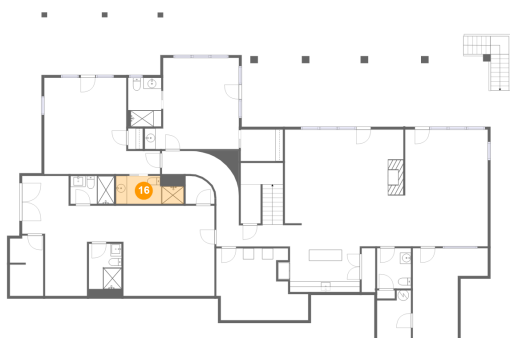
### 15 Floor 1 - Bath



Max Dimensions: 6'1" x 8'11"  
Calculated Area: 54 sq. ft  
Included: Yes

Heated: Yes  
Finished: Yes  
Enclosed: Yes  
Contiguous: Yes  
Permitted: Yes  
Wet space: Yes  
Addition: No  
Conversion: No

### 16 Floor 1 - Bath



Max Dimensions: 12'4" x 5'1"  
Calculated Area: 55 sq. ft  
Included: Yes

Heated: Yes  
Finished: Yes  
Enclosed: Yes  
Contiguous: Yes  
Permitted: Yes  
Wet space: Yes  
Addition: No  
Conversion: No

### 17 Floor 1 - W.I.C.

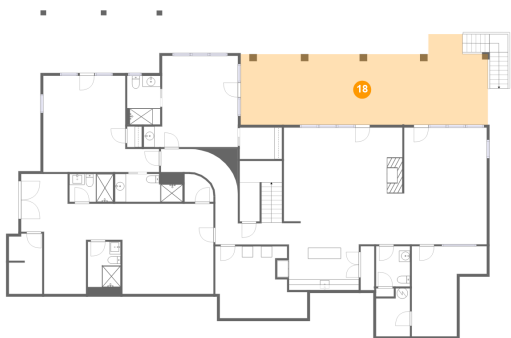


Max Dimensions: 7'8" x 5'9"  
Calculated Area: 44 sq. ft  
Included: Yes

Heated: Yes  
Finished: Yes  
Enclosed: Yes  
Contiguous: Yes  
Permitted: Yes  
Wet space: No  
Addition: No  
Conversion: No

180 Island View Drive, Penhook, Franklin County, Virginia,  
United States, 24137

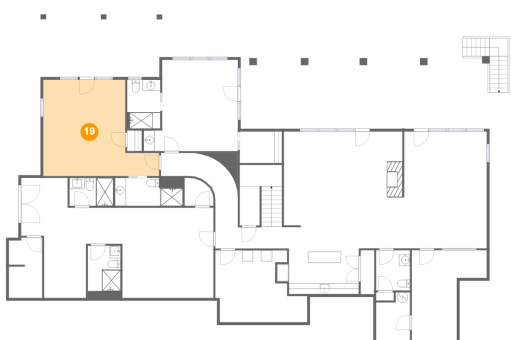
18 Floor 1 - Covered Patio



Max Dimensions: 45'1" x 16'6"  
Calculated Area: 602 sq. ft  
Included: No

Heated: No  
Finished: Yes  
Enclosed: No  
Contiguous: Yes  
Permitted: Yes  
Wet space: No  
Addition: No  
Conversion: No

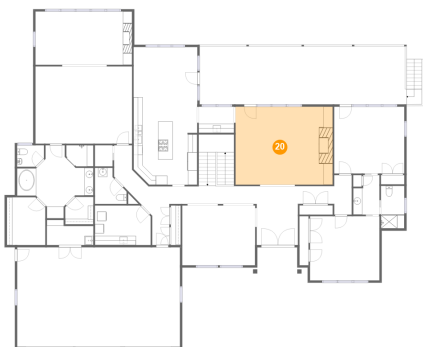
19 Floor 1 - Bedroom



Max Dimensions: 21'1" x 17'6"  
Calculated Area: 288 sq. ft  
Included: Yes

Heated: Yes  
Finished: Yes  
Enclosed: Yes  
Contiguous: Yes  
Permitted: Yes  
Wet space: No  
Addition: No  
Conversion: No

20 Floor 2 - Living Room

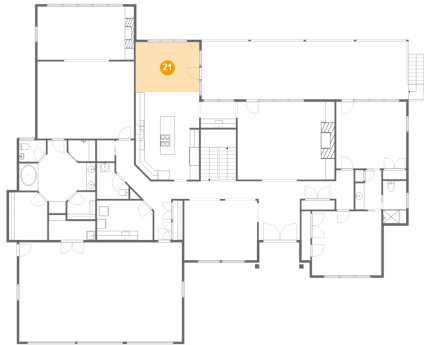


Max Dimensions: 21'3" x 17'1"  
Calculated Area: 363 sq. ft  
Included: Yes

Heated: Yes  
Finished: Yes  
Enclosed: Yes  
Contiguous: Yes  
Permitted: Yes  
Wet space: No  
Addition: No  
Conversion: No

180 Island View Drive, Penhook, Franklin County, Virginia,  
United States, 24137

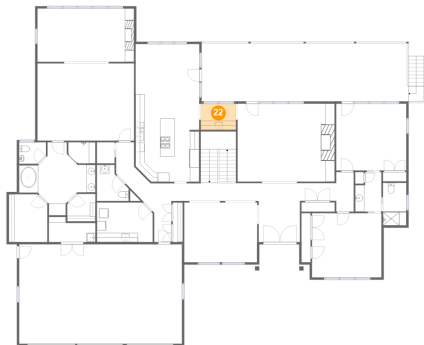
## 21 Floor 2 - Breakfast Nook



Max Dimensions: 14'0" x 11'0"  
Calculated Area: 153 sq. ft  
Included: Yes

Heated: Yes  
Finished: Yes  
Enclosed: Yes  
Contiguous: Yes  
Permitted: Yes  
Wet space: No  
Addition: No  
Conversion: No

## 22 Floor 2 - Hall



Max Dimensions: 7'9" x 5'9"  
Calculated Area: 44 sq. ft  
Included: Yes

Heated: Yes  
Finished: Yes  
Enclosed: Yes  
Contiguous: Yes  
Permitted: Yes  
Wet space: No  
Addition: No  
Conversion: No

## 23 Floor 2 - W.I.C.



Max Dimensions: 8'4" x 10'5"  
Calculated Area: 86 sq. ft  
Included: Yes

Heated: Yes  
Finished: Yes  
Enclosed: Yes  
Contiguous: Yes  
Permitted: Yes  
Wet space: No  
Addition: No  
Conversion: No

180 Island View Drive, Penhook, Franklin County, Virginia,  
United States, 24137

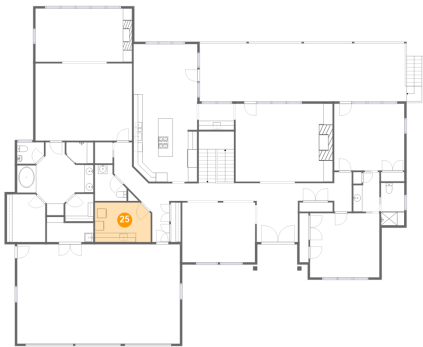
24 Floor 2 - Porch



Max Dimensions: 8'9" x 8'8"  
Calculated Area: 69 sq. ft  
Included: No

Heated: No  
Finished: Yes  
Enclosed: No  
Contiguous: Yes  
Permitted: Yes  
Wet space: No  
Addition: No  
Conversion: No

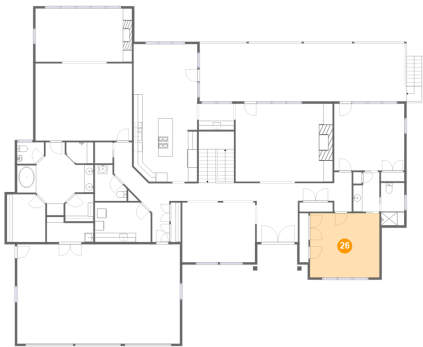
25 Floor 2 - Laundry



Max Dimensions: 12'2" x 8'8"  
Calculated Area: 103 sq. ft  
Included: Yes

Heated: Yes  
Finished: Yes  
Enclosed: Yes  
Contiguous: Yes  
Permitted: Yes  
Wet space: No  
Addition: No  
Conversion: No

26 Floor 2 - Bedroom

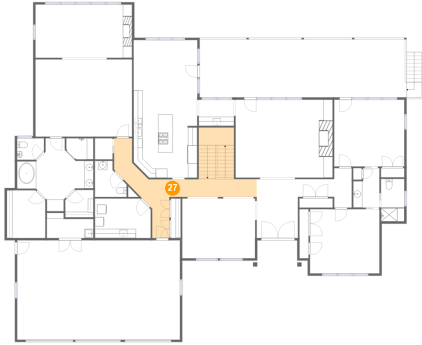


Max Dimensions: 15'3" x 14'1"  
Calculated Area: 214 sq. ft  
Included: Yes

Heated: Yes  
Finished: Yes  
Enclosed: Yes  
Contiguous: Yes  
Permitted: Yes  
Wet space: No  
Addition: No  
Conversion: No

180 Island View Drive, Penhook, Franklin County, Virginia,  
United States, 24137

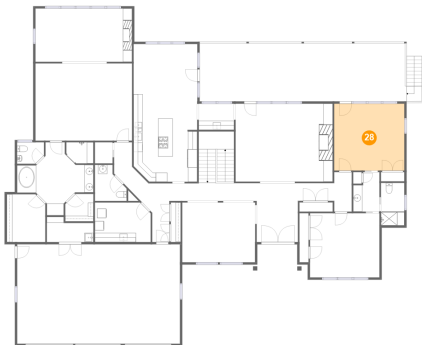
## 27 Floor 2 - Hall



Max Dimensions: 28'0" x 12'10"  
Calculated Area: 270 sq. ft  
Included: Yes

Heated: Yes  
Finished: Yes  
Enclosed: Yes  
Contiguous: Yes  
Permitted: Yes  
Wet space: No  
Addition: No  
Conversion: No

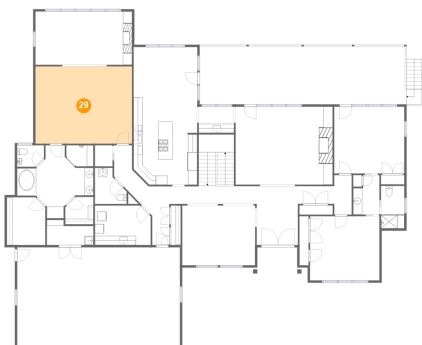
## 28 Floor 2 - Bedroom



Max Dimensions: 15'4" x 14'8"  
Calculated Area: 225 sq. ft  
Included: Yes

Heated: Yes  
Finished: Yes  
Enclosed: Yes  
Contiguous: Yes  
Permitted: Yes  
Wet space: No  
Addition: No  
Conversion: No

## 29 Floor 2 - Primary Bedroom



Max Dimensions: 21'2" x 16'11"  
Calculated Area: 358 sq. ft  
Included: Yes

Heated: Yes  
Finished: Yes  
Enclosed: Yes  
Contiguous: Yes  
Permitted: Yes  
Wet space: No  
Addition: No  
Conversion: No



180 Island View Drive, Penhook, Franklin County, Virginia,  
United States, 24137

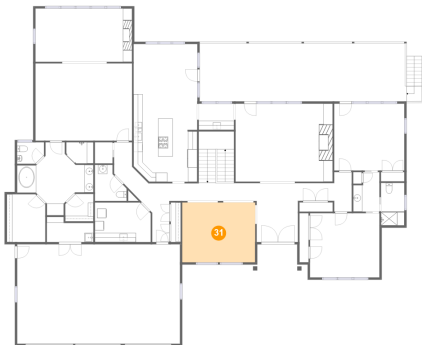
### 30 Floor 2 - WC



Max Dimensions: 5'11" x 4'8"  
Calculated Area: 26 sq. ft  
Included: Yes

Heated: Yes  
Finished: Yes  
Enclosed: Yes  
Contiguous: Yes  
Permitted: Yes  
Wet space: Yes  
Addition: No  
Conversion: No

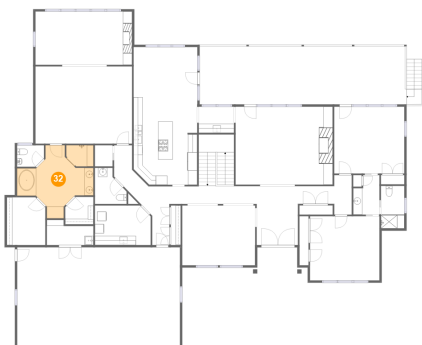
### 31 Floor 2 - Dining Room



Max Dimensions: 16'0" x 13'1"  
Calculated Area: 209 sq. ft  
Included: Yes

Heated: Yes  
Finished: Yes  
Enclosed: Yes  
Contiguous: Yes  
Permitted: Yes  
Wet space: No  
Addition: No  
Conversion: No

### 32 Floor 2 - Primary Bath

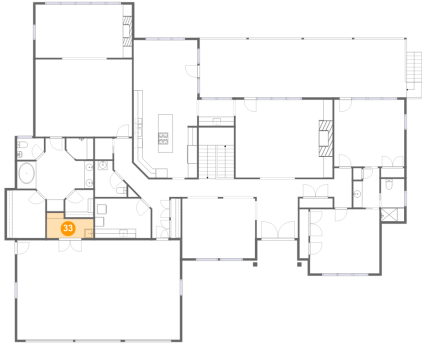


Max Dimensions: 16'9" x 16'0"  
Calculated Area: 177 sq. ft  
Included: Yes

Heated: Yes  
Finished: Yes  
Enclosed: Yes  
Contiguous: Yes  
Permitted: Yes  
Wet space: Yes  
Addition: No  
Conversion: No

180 Island View Drive, Penhook, Franklin County, Virginia,  
United States, 24137

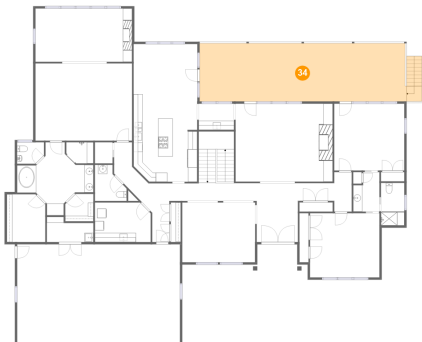
### 33 Floor 2 - Room



Max Dimensions: 10'2" x 5'6"  
Calculated Area: 48 sq. ft  
Included: Yes

Heated: Yes  
Finished: Yes  
Enclosed: Yes  
Contiguous: Yes  
Permitted: Yes  
Wet space: No  
Addition: No  
Conversion: No

### 34 Floor 2 - Covered Patio



Max Dimensions: 45'4" x 12'8"  
Calculated Area: 606 sq. ft  
Included: No

Heated: No  
Finished: Yes  
Enclosed: No  
Contiguous: Yes  
Permitted: Yes  
Wet space: No  
Addition: No  
Conversion: No

### 35 Floor 2 - Hall



Max Dimensions: 11'9" x 8'8"  
Calculated Area: 64 sq. ft  
Included: Yes

Heated: Yes  
Finished: Yes  
Enclosed: Yes  
Contiguous: Yes  
Permitted: Yes  
Wet space: No  
Addition: No  
Conversion: No

180 Island View Drive, Penhook, Franklin County, Virginia,  
United States, 24137

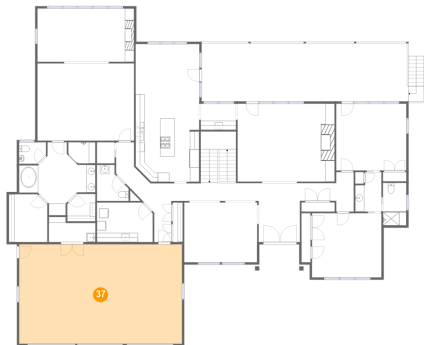
### 36 Floor 2 - Bath



Max Dimensions: 5'1" x 9'4"  
Calculated Area: 48 sq. ft  
Included: Yes

Heated: Yes  
Finished: Yes  
Enclosed: Yes  
Contiguous: Yes  
Permitted: Yes  
Wet space: Yes  
Addition: No  
Conversion: No

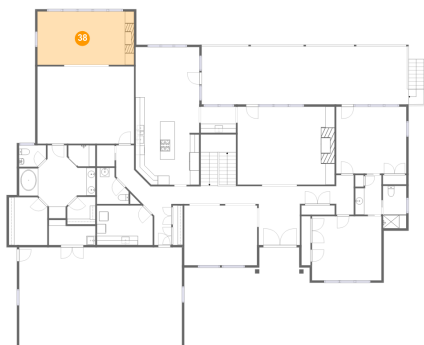
### 37 Floor 2 - Garage



Max Dimensions: 35'8" x  
21'9"  
Calculated Area: 776 sq. ft  
Included: No

Heated: No  
Finished: No  
Enclosed: Yes  
Contiguous:  
Yes  
Permitted: Yes  
Wet space: No  
Addition: No  
Conversion: No

### 38 Floor 2 - Sunroom



Max Dimensions: 21'2" x  
11'8"  
Calculated Area: 247 sq. ft  
Included: Yes

Heated: Yes  
Finished: Yes  
Enclosed: Yes  
Contiguous:  
Yes  
Permitted: Yes  
Wet space: No  
Addition: No  
Conversion: No

180 Island View Drive, Penhook, Franklin County, Virginia,  
United States, 24137

### 39 Floor 2 - WC



Max Dimensions: 6'11" x 7'11"  
Calculated Area: 44 sq. ft  
Included: Yes

Heated: Yes  
Finished: Yes  
Enclosed: Yes  
Contiguous: Yes  
Permitted: Yes  
Wet space: Yes  
Addition: No  
Conversion: No

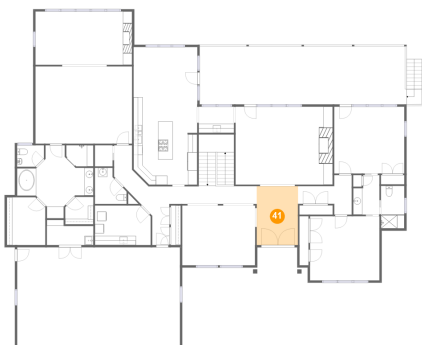
### 40 Floor 2 - Bath



Max Dimensions: 5'9" x 8'8"  
Calculated Area: 44 sq. ft  
Included: Yes

Heated: Yes  
Finished: Yes  
Enclosed: Yes  
Contiguous: Yes  
Permitted: Yes  
Wet space: Yes  
Addition: No  
Conversion: No

### 41 Floor 2 - Foyer

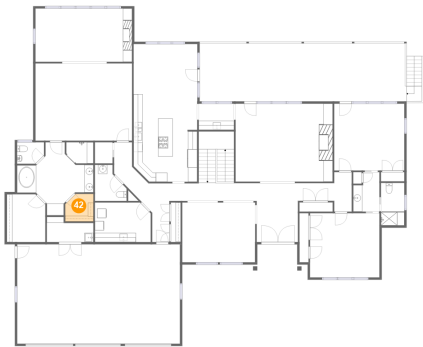


Max Dimensions: 9'1" x 12'11"  
Calculated Area: 116 sq. ft  
Included: Yes

Heated: Yes  
Finished: Yes  
Enclosed: Yes  
Contiguous: Yes  
Permitted: Yes  
Wet space: No  
Addition: No  
Conversion: No

180 Island View Drive, Penhook, Franklin County, Virginia,  
United States, 24137

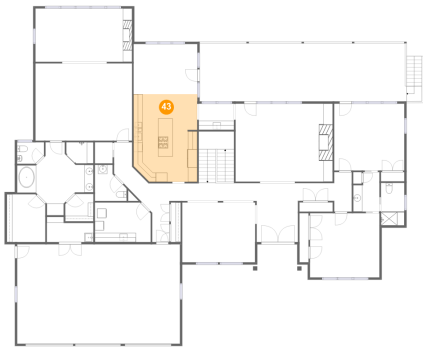
42 Floor 2 - W.I.C.



Max Dimensions: 6'2" x 6'0"  
Calculated Area: 35 sq. ft  
Included: Yes

Heated: Yes  
Finished: Yes  
Enclosed: Yes  
Contiguous: Yes  
Permitted: Yes  
Wet space: No  
Addition: No  
Conversion: No

43 Floor 2 - Kitchen



Max Dimensions: 14'0" x 19'2"  
Calculated Area: 261 sq. ft  
Included: Yes

Heated: Yes  
Finished: Yes  
Enclosed: Yes  
Contiguous: Yes  
Permitted: Yes  
Wet space: No  
Addition: No  
Conversion: No