



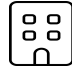



49248 Yale Drive, Macomb, Macomb County, Michigan, United States, 48044

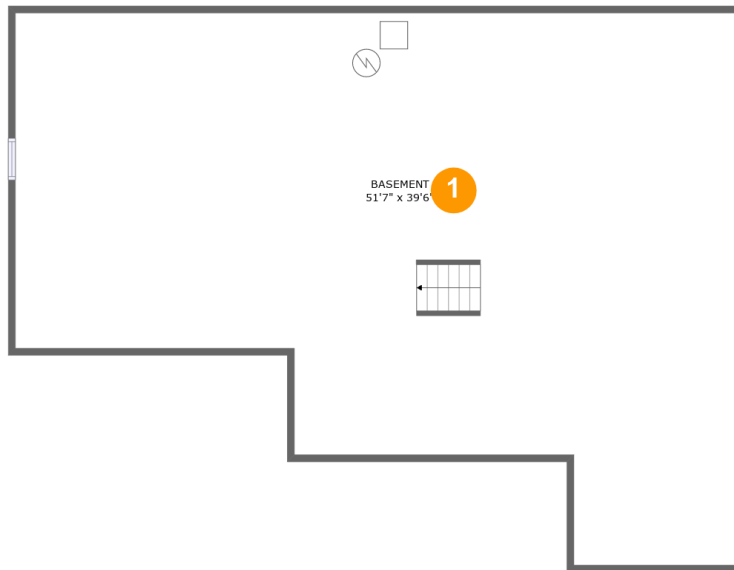


Property Summary

 **1** garages  **4** bedrooms  **2** bathrooms  **1** half baths

 **3** floors  **2,798** Gross Living Area sqft  **5,449** total sqft

**49248 Yale Drive, Macomb, Macomb County,
Michigan, United States, 48044**



Room Dimensions

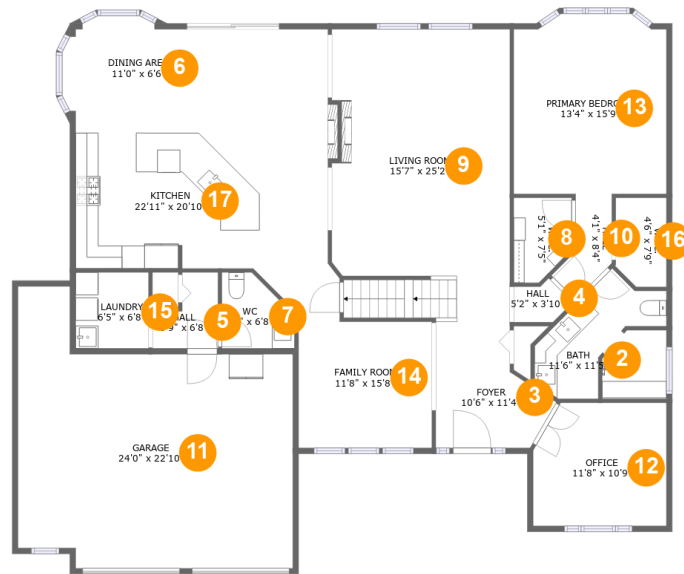
Floor 1

Total sqft: 1663

Living area: 0

#	Room name	Dimensions	Area (sqft)	Counted as Living Area
1	Basement	51'7" x 39'6"	1571 sq. ft	No

49248 Yale Drive, Macomb, Macomb County, Michigan, United States, 48044



Room Dimensions

Floor 2

Total sqft: 2418

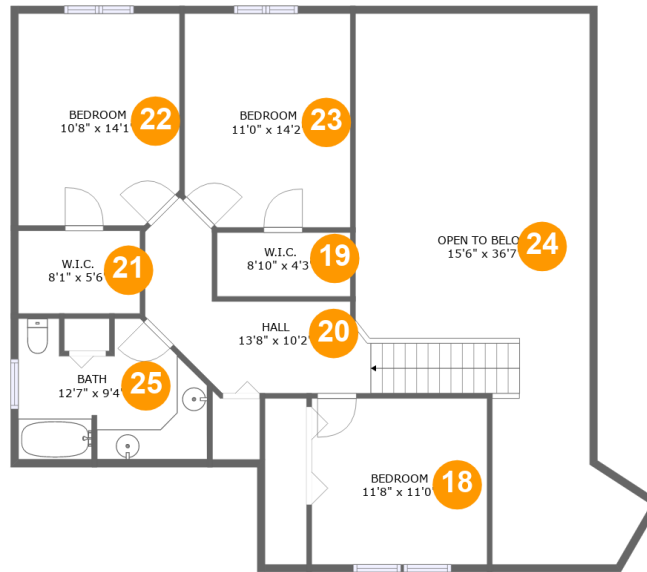
Living area: 1904

#	Room name	Dimensions	Area (sqft)	Counted as Living Area
2	Bath	11'6" x 11'5"	97 sq. ft	Yes
3	Foyer	10'6" x 11'4"	91 sq. ft	Yes
4	Hall	5'2" x 3'10"	14 sq. ft	Yes
5	Hall	5'9" x 6'8"	29 sq. ft	Yes
6	Dining Area	11'0" x 6'6"	72 sq. ft	Yes
7	Wc	6'4" x 6'8"	35 sq. ft	Yes
8	W.i.c.	5'1" x 7'5"	33 sq. ft	Yes
9	Living Room	15'7" x 25'2"	381 sq. ft	Yes
10	Hall	4'1" x 8'4"	29 sq. ft	Yes
11	Garage	24'0" x 22'10"	467 sq. ft	No
12	Office	11'8" x 10'9"	120 sq. ft	Yes

**49248 Yale Drive, Macomb, Macomb County,
Michigan, United States, 48044**

#	Room name	Dimensions	Area (sqft)	Counted as Living Area
13	Primary Bedroom	13'4" x 15'9"	203 sq. ft	Yes
14	Family Room	11'8" x 15'8"	153 sq. ft	Yes
15	Laundry	6'5" x 6'8"	42 sq. ft	Yes
16	W.i.c.	4'6" x 7'9"	33 sq. ft	Yes
17	Kitchen	22'11" x 20'10"	392 sq. ft	Yes

49248 Yale Drive, Macomb, Macomb County, Michigan, United States, 48044



Room Dimensions

Floor 3

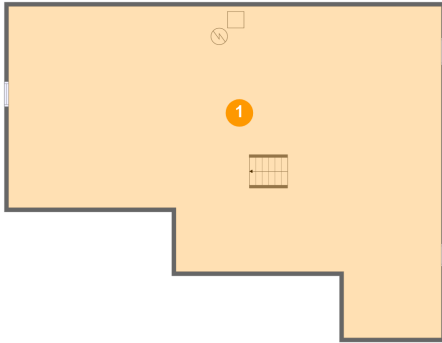
Total sqft: 1368

Living area: 894

#	Room name	Dimensions	Area (sqft)	Counted as Living Area
18	Bedroom	11'8" x 11'0"	128 sq. ft	Yes
19	W.i.c.	8'10" x 4'3"	37 sq. ft	Yes
20	Hall	13'8" x 10'2"	139 sq. ft	Yes
21	W.i.c.	8'1" x 5'6"	44 sq. ft	Yes
22	Bedroom	10'8" x 14'1"	148 sq. ft	Yes
23	Bedroom	11'0" x 14'2"	154 sq. ft	Yes
24	Open To Below	15'6" x 36'7"	442 sq. ft	No
25	Bath	12'7" x 9'4"	97 sq. ft	Yes

49248 Yale Drive, Macomb, Macomb County, Michigan, United States, 48044

1 Floor 1 - Basement



Dimensions: 51'7" x 39'6"
Area: 1571 sq. ft
Counted as Living Area: No

Heated: No
Finished: No
Enclosed: Yes
Contiguous: Yes
Permitted: Yes
Wet Space: No
Addition: No
Conversion: No

2 Floor 2 - Bath



Dimensions: 11'6" x 11'5"
Area: 97 sq. ft
Counted as Living Area:
Yes

Heated: Yes
Finished: Yes
Enclosed: Yes
Contiguous:
Yes
Permitted: Yes
Wet Space: Yes
Addition: No
Conversion: No

49248 Yale Drive, Macomb, Macomb County, Michigan, United States, 48044

3 Floor 2 - Foyer



Dimensions: 10'6" x 11'4"
Area: 91 sq. ft
Counted as Living Area:
Yes

Heated: Yes
Finished: Yes
Enclosed: Yes
Contiguous:
Yes
Permitted: Yes
Wet Space: No
Addition: No
Conversion: No

4 Floor 2 - Hall



Dimensions: 5'2" x 3'10"
Area: 14 sq. ft
Counted as Living Area:
Yes

Heated: Yes
Finished: Yes
Enclosed: Yes
Contiguous:
Yes
Permitted: Yes
Wet Space: No
Addition: No
Conversion: No

5 Floor 2 - Hall

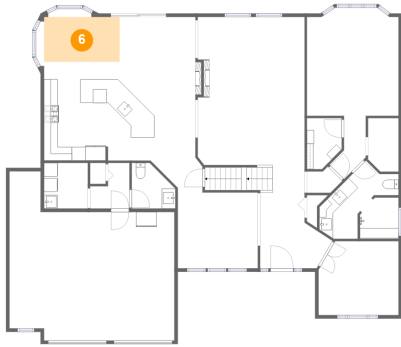


Dimensions: 5'9" x 6'8"
Area: 29 sq. ft
Counted as Living Area:
Yes

Heated: Yes
Finished: Yes
Enclosed: Yes
Contiguous:
Yes
Permitted: Yes
Wet Space: No
Addition: No
Conversion: No

49248 Yale Drive, Macomb, Macomb County, Michigan, United States, 48044

6 Floor 2 - Dining Area



Dimensions: 11'0" x 6'6"
Area: 72 sq. ft
Counted as Living Area:
Yes

Heated: Yes
Finished: Yes
Enclosed: Yes
Contiguous:
Yes
Permitted: Yes
Wet Space: No
Addition: No
Conversion: No

7 Floor 2 - Wc



Dimensions: 6'4" x 6'8"
Area: 35 sq. ft
Counted as Living Area:
Yes

Heated: Yes
Finished: Yes
Enclosed: Yes
Contiguous:
Yes
Permitted: Yes
Wet Space: Yes
Addition: No
Conversion: No

8 Floor 2 - W.i.c.

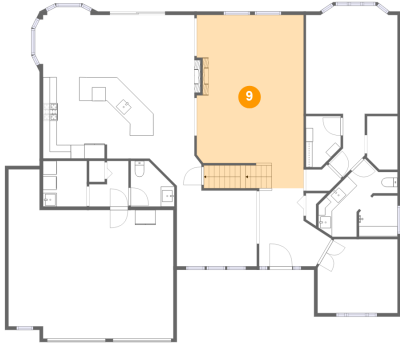


Dimensions: 5'1" x 7'5"
Area: 33 sq. ft
Counted as Living Area:
Yes

Heated: Yes
Finished: Yes
Enclosed: Yes
Contiguous:
Yes
Permitted: Yes
Wet Space: No
Addition: No
Conversion: No

49248 Yale Drive, Macomb, Macomb County, Michigan, United States, 48044

9 Floor 2 - Living Room



Dimensions: 15'7" x 25'2"
Area: 381 sq. ft
Counted as Living Area:
Yes

Heated: Yes
Finished: Yes
Enclosed: Yes
Contiguous:
Yes
Permitted: Yes
Wet Space: No
Addition: No
Conversion: No

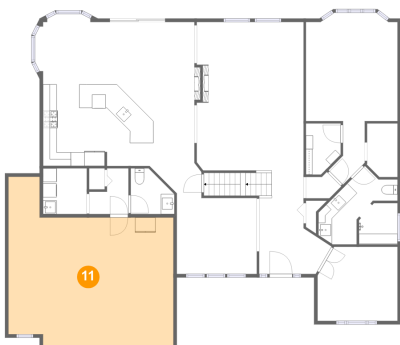
10 Floor 2 - Hall



Dimensions: 4'1" x 8'4"
Area: 29 sq. ft
Counted as Living Area:
Yes

Heated: Yes
Finished: Yes
Enclosed: Yes
Contiguous:
Yes
Permitted: Yes
Wet Space: No
Addition: No
Conversion: No

11 Floor 2 - Garage

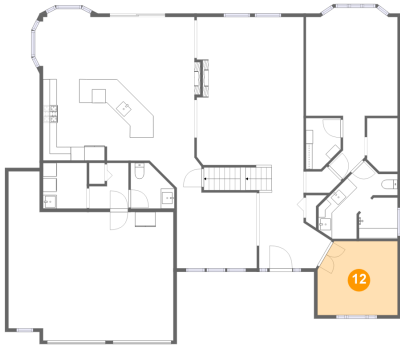


Dimensions: 24'0" x 22'10"
Area: 467 sq. ft
Counted as Living Area: No

Heated: No
Finished: No
Enclosed: Yes
Contiguous: Yes
Permitted: Yes
Wet Space: No
Addition: No
Conversion: No

49248 Yale Drive, Macomb, Macomb County, Michigan, United States, 48044

12 Floor 2 - Office



Dimensions: 11'8" x 10'9"
Area: 120 sq. ft
Counted as Living Area:
Yes

Heated: Yes
Finished: Yes
Enclosed: Yes
Contiguous:
Yes
Permitted: Yes
Wet Space: No
Addition: No
Conversion: No

13 Floor 2 - Primary Bedroom



Dimensions: 13'4" x 15'9"
Area: 203 sq. ft
Counted as Living Area:
Yes

Heated: Yes
Finished: Yes
Enclosed: Yes
Contiguous:
Yes
Permitted: Yes
Wet Space: No
Addition: No
Conversion: No

14 Floor 2 - Family Room



Dimensions: 11'8" x 15'8"
Area: 153 sq. ft
Counted as Living Area:
Yes

Heated: Yes
Finished: Yes
Enclosed: Yes
Contiguous:
Yes
Permitted: Yes
Wet Space: No
Addition: No
Conversion: No

49248 Yale Drive, Macomb, Macomb County, Michigan, United States, 48044

15 Floor 2 - Laundry



Dimensions: 6'5" x 6'8"
Area: 42 sq. ft
Counted as Living Area:
Yes

Heated: Yes
Finished: Yes
Enclosed: Yes
Contiguous:
Yes
Permitted: Yes
Wet Space: No
Addition: No
Conversion: No

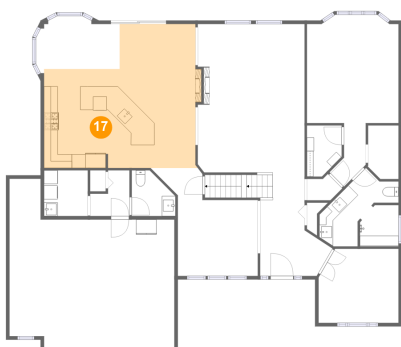
16 Floor 2 - W.i.c.



Dimensions: 4'6" x 7'9"
Area: 33 sq. ft
Counted as Living Area:
Yes

Heated: Yes
Finished: Yes
Enclosed: Yes
Contiguous:
Yes
Permitted: Yes
Wet Space: No
Addition: No
Conversion: No

17 Floor 2 - Kitchen

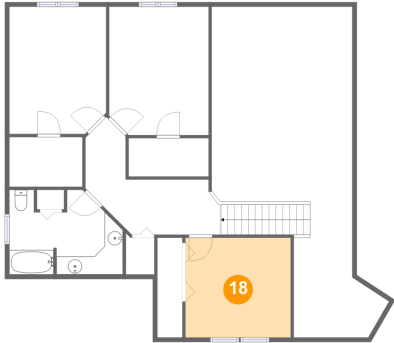


Dimensions: 22'11" x 20'10"
Area: 392 sq. ft
Counted as Living Area:
Yes

Heated: Yes
Finished: Yes
Enclosed: Yes
Contiguous:
Yes
Permitted: Yes
Wet Space: No
Addition: No
Conversion: No

49248 Yale Drive, Macomb, Macomb County, Michigan, United States, 48044

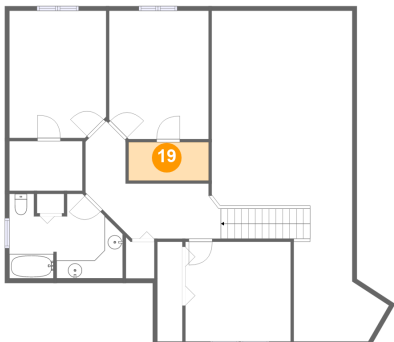
18 Floor 3 - Bedroom



Dimensions: 11'8" x 11'0"
Area: 128 sq. ft
Counted as Living Area:
Yes

Heated: Yes
Finished: Yes
Enclosed: Yes
Contiguous:
Yes
Permitted: Yes
Wet Space: No
Addition: No
Conversion: No

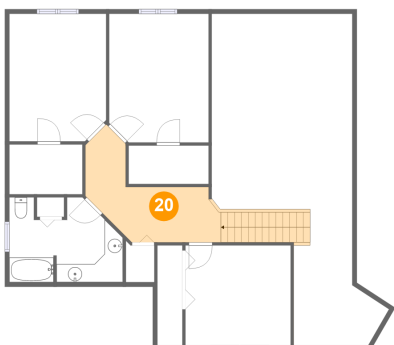
19 Floor 3 - W.i.c.



Dimensions: 8'10" x 4'3"
Area: 37 sq. ft
Counted as Living Area:
Yes

Heated: Yes
Finished: Yes
Enclosed: Yes
Contiguous:
Yes
Permitted: Yes
Wet Space: No
Addition: No
Conversion: No

20 Floor 3 - Hall

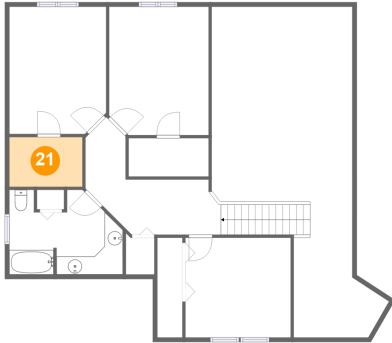


Dimensions: 13'8" x 10'2"
Area: 139 sq. ft
Counted as Living Area:
Yes

Heated: Yes
Finished: Yes
Enclosed: Yes
Contiguous:
Yes
Permitted: Yes
Wet Space: No
Addition: No
Conversion: No

49248 Yale Drive, Macomb, Macomb County, Michigan, United States, 48044

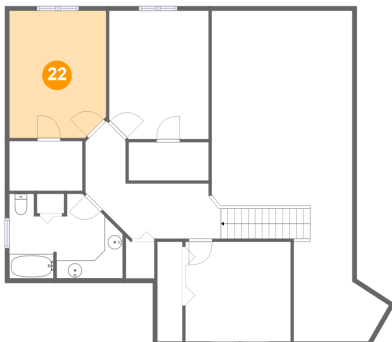
21 Floor 3 - W.i.c.



Dimensions: 8'1" x 5'6"
Area: 44 sq. ft
Counted as Living Area:
Yes

Heated: Yes
Finished: Yes
Enclosed: Yes
Contiguous:
Yes
Permitted: Yes
Wet Space: No
Addition: No
Conversion: No

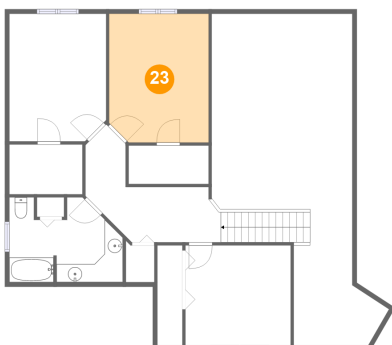
22 Floor 3 - Bedroom



Dimensions: 10'8" x 14'1"
Area: 148 sq. ft
Counted as Living Area:
Yes

Heated: Yes
Finished: Yes
Enclosed: Yes
Contiguous:
Yes
Permitted: Yes
Wet Space: No
Addition: No
Conversion: No

23 Floor 3 - Bedroom

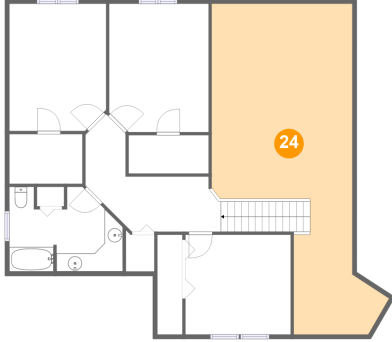


Dimensions: 11'0" x 14'2"
Area: 154 sq. ft
Counted as Living Area:
Yes

Heated: Yes
Finished: Yes
Enclosed: Yes
Contiguous:
Yes
Permitted: Yes
Wet Space: No
Addition: No
Conversion: No

**49248 Yale Drive, Macomb, Macomb County,
Michigan, United States, 48044**

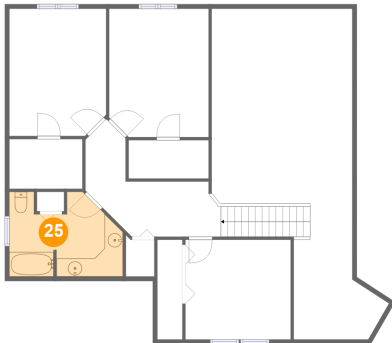
24 Floor 3 - Open To Below



Dimensions: 15'6" x 36'7"
Area: 442 sq. ft
Counted as Living Area: No

Heated: No
Finished: No
Enclosed: No
Contiguous: Yes
Permitted: No
Wet Space: No
Addition: No
Conversion: No

25 Floor 3 - Bath



Dimensions: 12'7" x 9'4"
Area: 97 sq. ft
Counted as Living Area:
Yes

Heated: Yes
Finished: Yes
Enclosed: Yes
Contiguous:
Yes
Permitted: Yes
Wet Space: Yes
Addition: No
Conversion: No