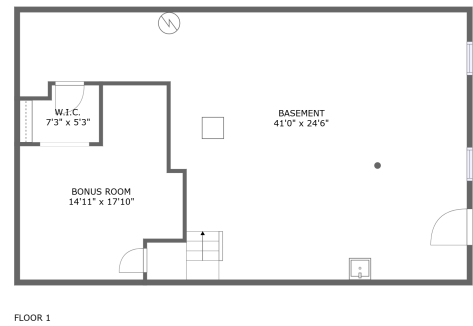
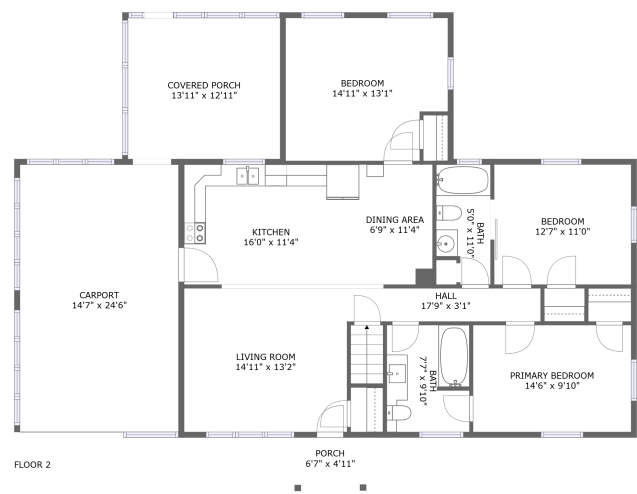



Home report


145 Donald Avenue, Rocky Mount, Franklin County, Virginia,  
United States, 24151





Property summary


 **0** Garages


 **3** Bedrooms

 **2** Bathrooms

 **0** Half baths

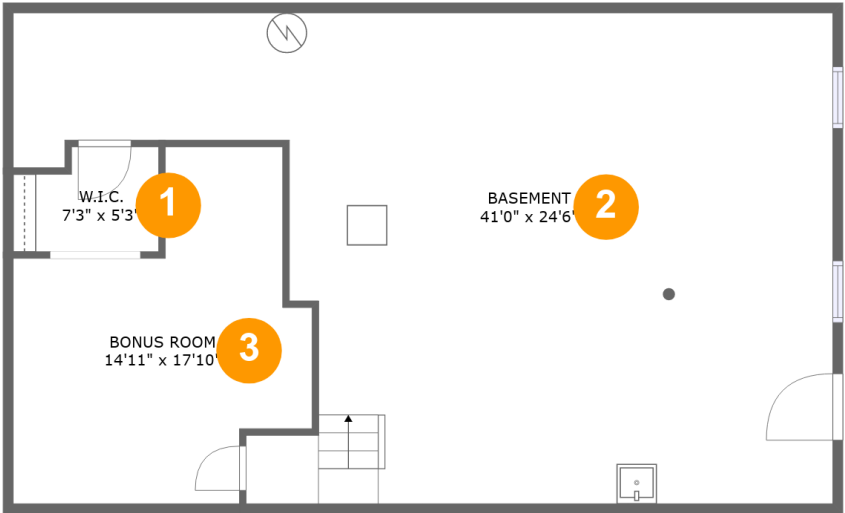
 **2** Floors

 **1,511** Gross living area sqft

 **2,965** Total sqft

Home report

145 Donald Avenue, Rocky Mount, Franklin County, Virginia,  
United States, 24151



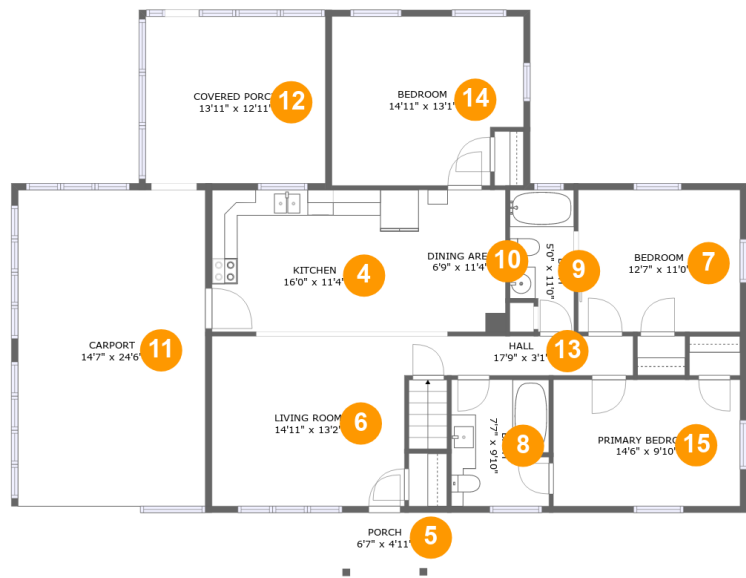
Room dimensions

Floor 1 Total sqft: 1072    Living area: 225

#		Max Dimensions	sqft	Included
1	W.I.C.	7'3" x 5'3"	34 sq. ft	No
2	Basement	41'0" x 24'6"	756 sq. ft	No
3	Bonus Room	14'11" x 17'10"	199 sq. ft	Yes

Home report

145 Donald Avenue, Rocky Mount, Franklin County, Virginia,  
United States, 24151



Room dimensions

Floor 2 Total sqft: 1893 Living area: 1286

#		Max Dimensions	sqft	Included
4	Kitchen	16'0" x 11'4"	181 sq. ft	Yes
5	Porch	6'7" x 4'11"	32 sq. ft	No
6	Living Room	14'11" x 13'2"	197 sq. ft	Yes
7	Bedroom	12'7" x 11'0"	138 sq. ft	Yes
8	Bath	7'7" x 9'10"	73 sq. ft	Yes
9	Bath	5'0" x 11'0"	49 sq. ft	Yes
10	Dining Area	6'9" x 11'4"	75 sq. ft	Yes
11	Carport	14'7" x 24'6"	357 sq. ft	No
12	Covered Porch	13'11" x 12'11"	181 sq. ft	No
13	Hall	17'9" x 3'1"	54 sq. ft	Yes
14	Bedroom	14'11" x 13'1"	184 sq. ft	Yes

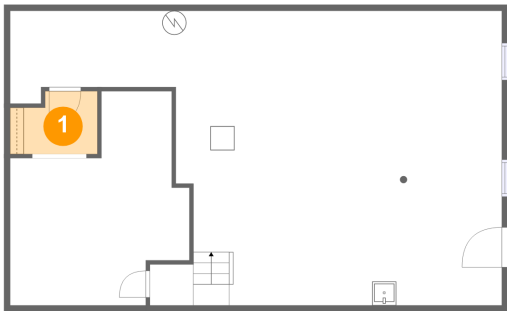
Home report

145 Donald Avenue, Rocky Mount, Franklin County, Virginia,  
United States, 24151

#		Max Dimensions	sqft	Included
15	Primary Bedroom	14'6" x 9'10"	142 sq. ft	Yes

145 Donald Avenue, Rocky Mount, Franklin County, Virginia,  
United States, 24151

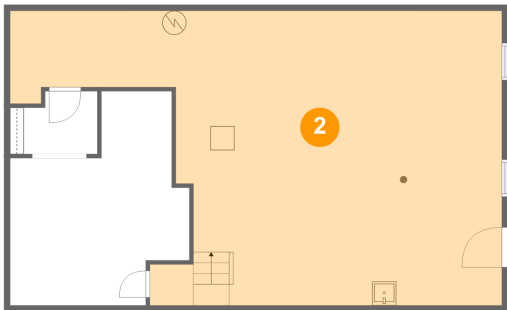
1 Floor 1 - W.I.C.



Max Dimensions: 7'3" x 5'3"  
Calculated Area: 34 sq. ft  
Included: No

Heated: Yes  
Finished: Yes  
Enclosed: Yes  
Contiguous: No  
Permitted: Yes  
Wet space: No  
Addition: No  
Conversion: No

2 Floor 1 - Basement

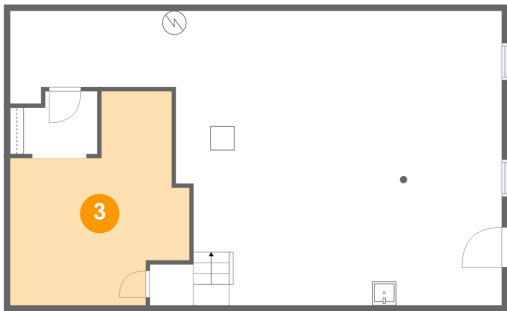


Max Dimensions: 41'0" x 24'6"  
Calculated Area: 756 sq. ft  
Included: No

Heated: Yes  
Finished: No  
Enclosed: Yes  
Contiguous: Yes  
Permitted: Yes  
Wet space: No  
Addition: No  
Conversion: No

145 Donald Avenue, Rocky Mount, Franklin County, Virginia,  
United States, 24151

3 Floor 1 - Bonus Room



Max Dimensions: 14'11" x 17'10"  
Calculated Area: 199 sq. ft  
Included: Yes

Heated: Yes  
Finished: Yes  
Enclosed: Yes  
Contiguous: Yes  
Permitted: Yes  
Wet space: No  
Addition: No  
Conversion: No

4 Floor 2 - Kitchen



Max Dimensions: 16'0" x 11'4"  
Calculated Area: 181 sq. ft  
Included: Yes

Heated: Yes  
Finished: Yes  
Enclosed: Yes  
Contiguous: Yes  
Permitted: Yes  
Wet space: No  
Addition: No  
Conversion: No

5 Floor 2 - Porch

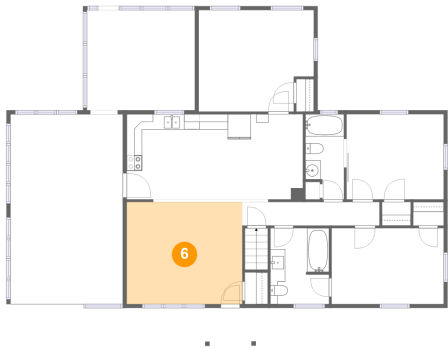


Max Dimensions: 6'7" x 4'11"  
Calculated Area: 32 sq. ft  
Included: No

Heated: No  
Finished: Yes  
Enclosed: No  
Contiguous: Yes  
Permitted: Yes  
Wet space: No  
Addition: No  
Conversion: No

145 Donald Avenue, Rocky Mount, Franklin County, Virginia,  
United States, 24151

6 Floor 2 - Living Room



Max Dimensions: 14'11" x 13'2"  
Calculated Area: 197 sq. ft  
Included: Yes

Heated: Yes  
Finished: Yes  
Enclosed: Yes  
Contiguous: Yes  
Permitted: Yes  
Wet space: No  
Addition: No  
Conversion: No

7 Floor 2 - Bedroom



Max Dimensions: 12'7" x 11'0"  
Calculated Area: 138 sq. ft  
Included: Yes

Heated: Yes  
Finished: Yes  
Enclosed: Yes  
Contiguous: Yes  
Permitted: Yes  
Wet space: No  
Addition: No  
Conversion: No

8 Floor 2 - Bath



Max Dimensions: 7'7" x 9'10"  
Calculated Area: 73 sq. ft  
Included: Yes

Heated: Yes  
Finished: Yes  
Enclosed: Yes  
Contiguous: Yes  
Permitted: Yes  
Wet space: Yes  
Addition: No  
Conversion: No

145 Donald Avenue, Rocky Mount, Franklin County, Virginia,  
United States, 24151

9 Floor 2 - Bath



Max Dimensions: 5'0" x 11'0"  
Calculated Area: 49 sq. ft  
Included: Yes

Heated: Yes  
Finished: Yes  
Enclosed: Yes  
Contiguous: Yes  
Permitted: Yes  
Wet space: Yes  
Addition: No  
Conversion: No

10 Floor 2 - Dining Area



Max Dimensions: 6'9" x 11'4"  
Calculated Area: 75 sq. ft  
Included: Yes

Heated: Yes  
Finished: Yes  
Enclosed: Yes  
Contiguous: Yes  
Permitted: Yes  
Wet space: No  
Addition: No  
Conversion: No

11 Floor 2 - Carport



Max Dimensions: 14'7" x 24'6"  
Calculated Area: 357 sq. ft  
Included: No

Heated: No  
Finished: Yes  
Enclosed: No  
Contiguous: Yes  
Permitted: Yes  
Wet space: No  
Addition: No  
Conversion: No



145 Donald Avenue, Rocky Mount, Franklin County, Virginia,  
United States, 24151

12 Floor 2 - Covered Porch



Max Dimensions: 13'11" x 12'11"  
Calculated Area: 181 sq. ft  
Included: No

Heated: No  
Finished: No  
Enclosed: No  
Contiguous: Yes  
Permitted: Yes  
Wet space: No  
Addition: No  
Conversion: No

13 Floor 2 - Hall



Max Dimensions: 17'9" x 3'1"  
Calculated Area: 54 sq. ft  
Included: Yes

Heated: Yes  
Finished: Yes  
Enclosed: Yes  
Contiguous: Yes  
Permitted: Yes  
Wet space: No  
Addition: No  
Conversion: No

14 Floor 2 - Bedroom



Max Dimensions: 14'11" x 13'1"  
Calculated Area: 184 sq. ft  
Included: Yes

Heated: Yes  
Finished: Yes  
Enclosed: Yes  
Contiguous: Yes  
Permitted: Yes  
Wet space: No  
Addition: No  
Conversion: No

145 Donald Avenue, Rocky Mount, Franklin County, Virginia,  
United States, 24151

**15** Floor 2 - Primary Bedroom



Max Dimensions: 14'6" x 9'10"  
Calculated Area: 142 sq. ft  
Included: Yes

Heated: Yes  
Finished: Yes  
Enclosed: Yes  
Contiguous: Yes  
Permitted: Yes  
Wet space: No  
Addition: No  
Conversion: No