

Home report


4510 Windy Gap Drive, Roanoke, Roanoke County, Virginia, United States, 24014



Property summary


 **1** Garages

 **4** Bedrooms

 **3** Bathrooms

 **1** Half baths

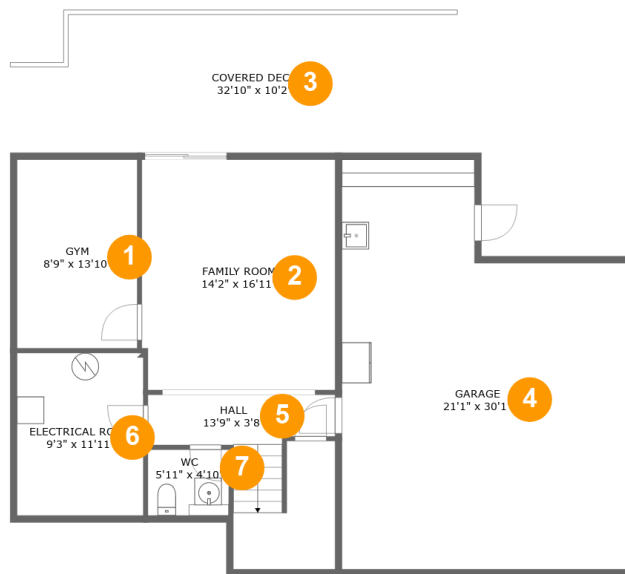
 **3** Floors

 **2,984** Gross living area sqft

 **4,779** Total sqft

Home report

4510 Windy Gap Drive, Roanoke, Roanoke County, Virginia,
United States, 24014



Room dimensions

Floor 1

Total sqft: 1592 Living area: 572

#		Dimensions	sqft	Counted as living area
1	Gym	8'9" x 13'10"	122 sq. ft	Yes
2	Family Room	14'2" x 16'11"	239 sq. ft	Yes
3	Covered Deck	32'10" x 10'2"	316 sq. ft	No
4	Garage	21'1" x 30'1"	547 sq. ft	No
5	Hall	13'9" x 3'8"	116 sq. ft	Yes
6	Electrical Room	9'3" x 11'11"	110 sq. ft	No
7	WC	5'11" x 4'10"	29 sq. ft	Yes

Home report

4510 Windy Gap Drive, Roanoke, Roanoke County, Virginia,
United States, 24014



Room dimensions

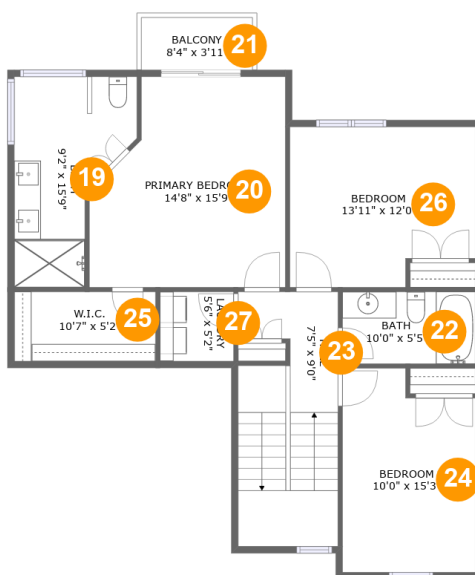
Floor 2

Total sqft: 2136 Living area: 1394

#		Dimensions	sqft	Counted as living area
8	Hall	20'10" x 13'9"	147 sq. ft	Yes
9	Deck	57'4" x 24'10"	611 sq. ft	No
10	Living Room	20'3" x 21'9"	438 sq. ft	Yes
11	Porch	6'4" x 7'6"	47 sq. ft	No
12	Covered Deck	10'11" x 7'8"	84 sq. ft	No
13	Bath	10'11" x 5'4"	54 sq. ft	Yes
14	Bedroom	11'0" x 9'11"	105 sq. ft	Yes
15	Office	9'11" x 11'11"	119 sq. ft	Yes
16	Kitchen	14'3" x 17'8"	235 sq. ft	Yes
17	Foyer	6'11" x 9'10"	68 sq. ft	Yes
18	Dining Area	9'5" x 11'3"	106 sq. ft	Yes

Home report

4510 Windy Gap Drive, Roanoke, Roanoke County, Virginia,
United States, 24014



Room dimensions

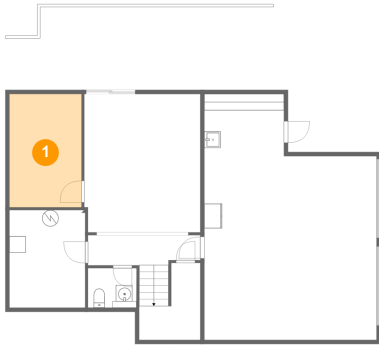
Floor 3

Total sqft: 1051 Living area: 1018

#		Dimensions	sqft	Counted as living area
19	Bath	9'2" x 15'9"	109 sq. ft	Yes
20	Primary Bedroom	14'8" x 15'9"	205 sq. ft	Yes
21	Balcony	8'4" x 3'11"	33 sq. ft	No
22	Bath	10'0" x 5'5"	54 sq. ft	Yes
23	Hall	7'5" x 9'0"	134 sq. ft	Yes
24	Bedroom	10'0" x 15'3"	140 sq. ft	Yes
25	W.I.C.	10'7" x 5'2"	55 sq. ft	Yes
26	Bedroom	13'11" x 12'0"	155 sq. ft	Yes
27	Laundry	5'6" x 5'2"	29 sq. ft	Yes

4510 Windy Gap Drive, Roanoke, Roanoke County, Virginia,
United States, 24014

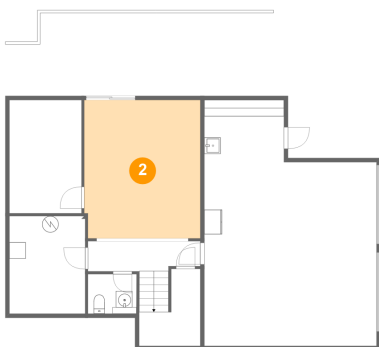
1 Floor 1 - Gym



Dimensions: 8'9" x 13'10"
Area: 122 sq. ft
Counted as living area: Yes

Heated: Yes
Finished: Yes
Enclosed: Yes
Contiguous: Yes
Permitted: Yes
Wet space: No
Addition: No
Conversion: No

2 Floor 1 - Family Room

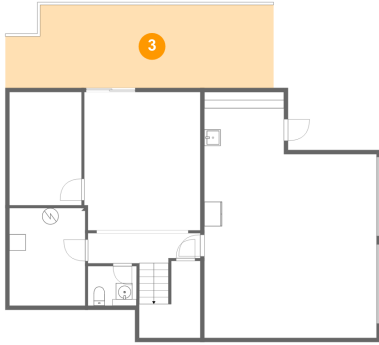


Dimensions: 14'2" x 16'11"
Area: 239 sq. ft
Counted as living area: Yes

Heated: Yes
Finished: Yes
Enclosed: Yes
Contiguous: Yes
Permitted: Yes
Wet space: No
Addition: No
Conversion: No

4510 Windy Gap Drive, Roanoke, Roanoke County, Virginia,
United States, 24014

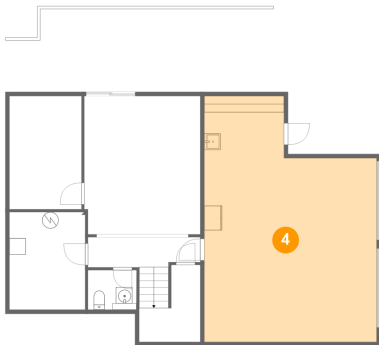
3 Floor 1 - Covered Deck



Dimensions: 32'10" x 10'2"
Area: 316 sq. ft
Counted as living area: No

Heated: No
Finished: Yes
Enclosed: No
Contiguous: Yes
Permitted: Yes
Wet space: No
Addition: No
Conversion: No

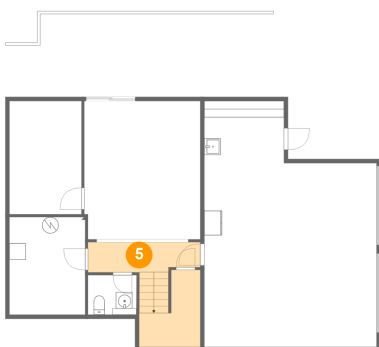
4 Floor 1 - Garage



Dimensions: 21'1" x 30'1"
Area: 547 sq. ft
Counted as living area: No

Heated: No
Finished: No
Enclosed: Yes
Contiguous: Yes
Permitted: Yes
Wet space: No
Addition: No
Conversion: No

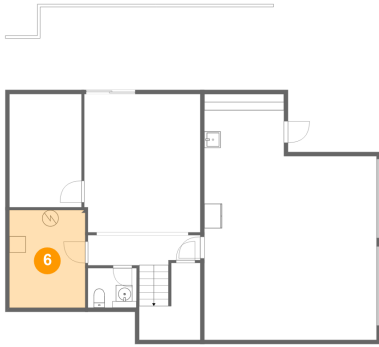
5 Floor 1 - Hall



Dimensions: 13'9" x 3'8"
Area: 116 sq. ft
Counted as living area: Yes

Heated: Yes
Finished: Yes
Enclosed: Yes
Contiguous: Yes
Permitted: Yes
Wet space: No
Addition: No
Conversion: No

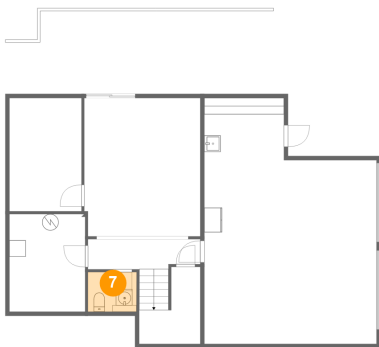
6 Floor 1 - Electrical Room



Dimensions: 9'3" x 11'11"
Area: 110 sq. ft
Counted as living area: No

Heated: No
Finished: No
Enclosed: Yes
Contiguous: Yes
Permitted: Yes
Wet space: No
Addition: No
Conversion: No

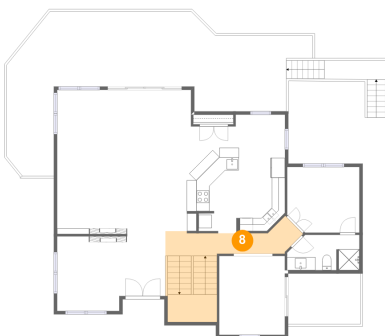
7 Floor 1 - WC



Dimensions: 5'11" x 4'10"
Area: 29 sq. ft
Counted as living area: Yes

Heated: Yes
Finished: Yes
Enclosed: Yes
Contiguous: Yes
Permitted: Yes
Wet space: Yes
Addition: No
Conversion: No

8 Floor 2 - Hall

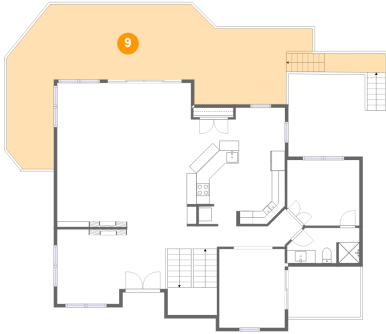


Dimensions: 20'10" x 13'9"
Area: 147 sq. ft
Counted as living area: Yes

Heated: Yes
Finished: Yes
Enclosed: Yes
Contiguous: Yes
Permitted: Yes
Wet space: No
Addition: No
Conversion: No

4510 Windy Gap Drive, Roanoke, Roanoke County, Virginia,
United States, 24014

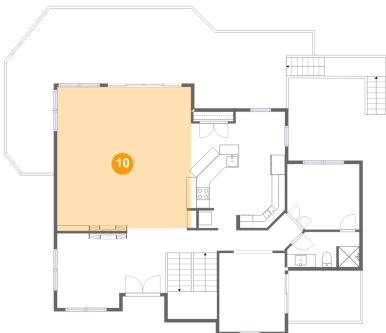
9 Floor 2 - Deck



Dimensions: 57'4" x 24'10"
Area: 611 sq. ft
Counted as living area: No

Heated: No
Finished: Yes
Enclosed: No
Contiguous: Yes
Permitted: Yes
Wet space: No
Addition: No
Conversion: No

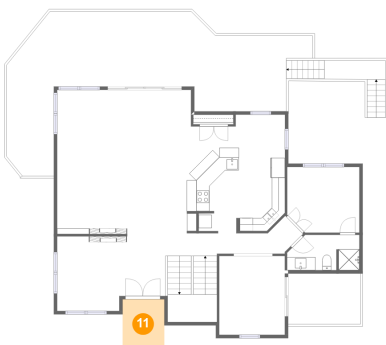
10 Floor 2 - Living Room



Dimensions: 20'3" x 21'9"
Area: 438 sq. ft
Counted as living area: Yes

Heated: Yes
Finished: Yes
Enclosed: Yes
Contiguous: Yes
Permitted: Yes
Wet space: No
Addition: No
Conversion: No

11 Floor 2 - Porch



Dimensions: 6'4" x 7'6"
Area: 47 sq. ft
Counted as living area: No

Heated: No
Finished: Yes
Enclosed: No
Contiguous: Yes
Permitted: Yes
Wet space: No
Addition: No
Conversion: No

12 Floor 2 - Covered Deck



Dimensions: 10'11" x 7'8"
Area: 84 sq. ft
Counted as living area: No

Heated: No
Finished: Yes
Enclosed: No
Contiguous: Yes
Permitted: Yes
Wet space: No
Addition: No
Conversion: No

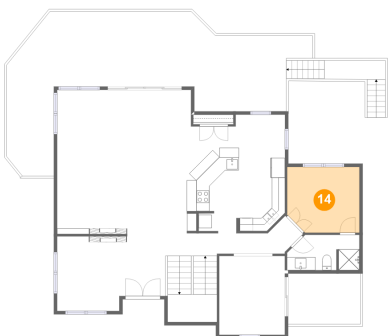
13 Floor 2 - Bath



Dimensions: 10'11" x 5'4"
Area: 54 sq. ft
Counted as living area: Yes

Heated: Yes
Finished: Yes
Enclosed: Yes
Contiguous: Yes
Permitted: Yes
Wet space: Yes
Addition: No
Conversion: No

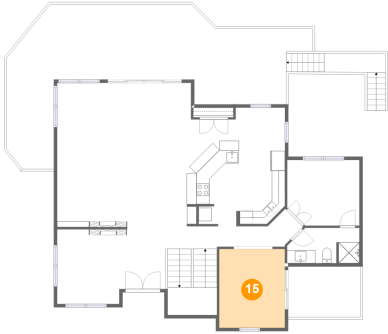
14 Floor 2 - Bedroom



Dimensions: 11'0" x 9'11"
Area: 105 sq. ft
Counted as living area: Yes

Heated: Yes
Finished: Yes
Enclosed: Yes
Contiguous: Yes
Permitted: Yes
Wet space: No
Addition: No
Conversion: No

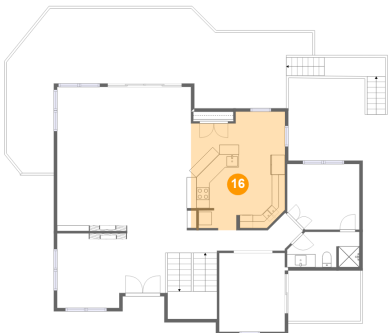
15 Floor 2 - Office



Dimensions: 9'11" x 11'11"
Area: 119 sq. ft
Counted as living area: Yes

Heated: Yes
Finished: Yes
Enclosed: Yes
Contiguous: Yes
Permitted: Yes
Wet space: No
Addition: No
Conversion: No

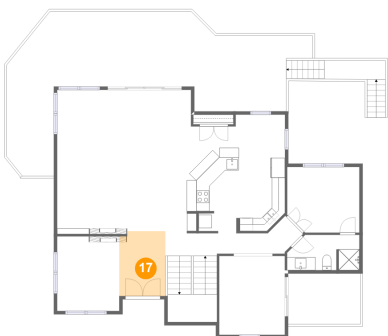
16 Floor 2 - Kitchen



Dimensions: 14'3" x 17'8"
Area: 235 sq. ft
Counted as living area: Yes

Heated: Yes
Finished: Yes
Enclosed: Yes
Contiguous: Yes
Permitted: Yes
Wet space: No
Addition: No
Conversion: No

17 Floor 2 - Foyer

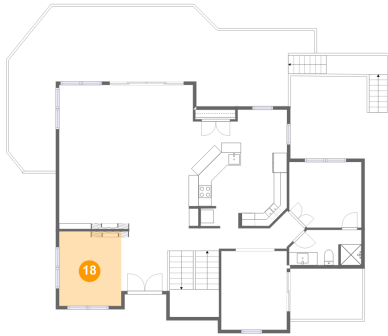


Dimensions: 6'11" x 9'10"
Area: 68 sq. ft
Counted as living area: Yes

Heated: Yes
Finished: Yes
Enclosed: Yes
Contiguous: Yes
Permitted: Yes
Wet space: No
Addition: No
Conversion: No

4510 Windy Gap Drive, Roanoke, Roanoke County, Virginia,
United States, 24014

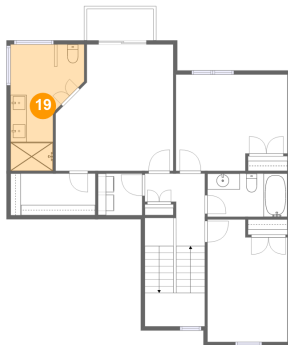
18 Floor 2 - Dining Area



Dimensions: 9'5" x 11'3"
Area: 106 sq. ft
Counted as living area: Yes

Heated: Yes
Finished: Yes
Enclosed: Yes
Contiguous: Yes
Permitted: Yes
Wet space: No
Addition: No
Conversion: No

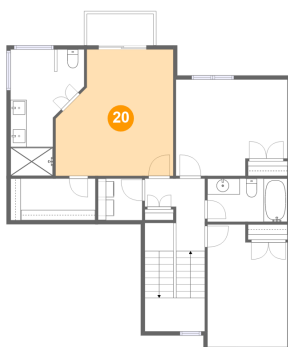
19 Floor 3 - Bath



Dimensions: 9'2" x 15'9"
Area: 109 sq. ft
Counted as living area: Yes

Heated: Yes
Finished: Yes
Enclosed: Yes
Contiguous: Yes
Permitted: Yes
Wet space: Yes
Addition: No
Conversion: No

20 Floor 3 - Primary Bedroom



Dimensions: 14'8" x 15'9"
Area: 205 sq. ft
Counted as living area: Yes

Heated: Yes
Finished: Yes
Enclosed: Yes
Contiguous: Yes
Permitted: Yes
Wet space: No
Addition: No
Conversion: No

21 Floor 3 - Balcony



Dimensions: 8'4" x 3'11"
Area: 33 sq. ft
Counted as living area: No

Heated: No
Finished: Yes
Enclosed: No
Contiguous: Yes
Permitted: Yes
Wet space: No
Addition: No
Conversion: No

22 Floor 3 - Bath



Dimensions: 10'0" x 5'5"
Area: 54 sq. ft
Counted as living area: Yes

Heated: Yes
Finished: Yes
Enclosed: Yes
Contiguous: Yes
Permitted: Yes
Wet space: Yes
Addition: No
Conversion: No

23 Floor 3 - Hall



Dimensions: 7'5" x 9'0"
Area: 134 sq. ft
Counted as living area: Yes

Heated: Yes
Finished: Yes
Enclosed: Yes
Contiguous: Yes
Permitted: Yes
Wet space: No
Addition: No
Conversion: No

4510 Windy Gap Drive, Roanoke, Roanoke County, Virginia,
United States, 24014

24 Floor 3 - Bedroom



Dimensions: 10'0" x 15'3"
Area: 140 sq. ft
Counted as living area: Yes

Heated: Yes
Finished: Yes
Enclosed: Yes
Contiguous: Yes
Permitted: Yes
Wet space: No
Addition: No
Conversion: No

25 Floor 3 - W.I.C.



Dimensions: 10'7" x 5'2"
Area: 55 sq. ft
Counted as living area: Yes

Heated: Yes
Finished: Yes
Enclosed: Yes
Contiguous: Yes
Permitted: Yes
Wet space: No
Addition: No
Conversion: No

26 Floor 3 - Bedroom



Dimensions: 13'11" x 12'0"
Area: 155 sq. ft
Counted as living area: Yes

Heated: Yes
Finished: Yes
Enclosed: Yes
Contiguous: Yes
Permitted: Yes
Wet space: No
Addition: No
Conversion: No

Home report

4510 Windy Gap Drive, Roanoke, Roanoke County, Virginia,
United States, 24014

27 Floor 3 - Laundry



Dimensions: 5'6" x 5'2"
Area: 29 sq. ft
Counted as living area: Yes

Heated: Yes
Finished: Yes
Enclosed: Yes
Contiguous: Yes
Permitted: Yes
Wet space: No
Addition: No
Conversion: No