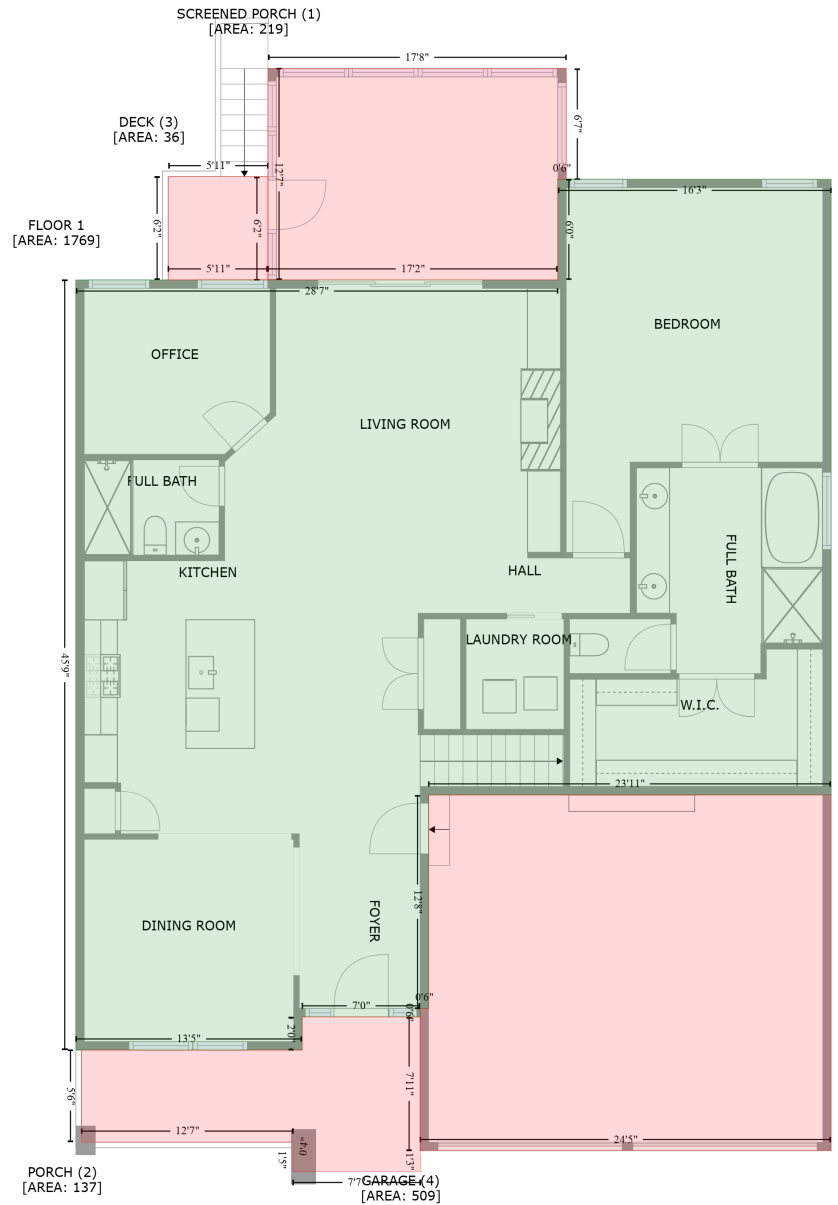


# 19 Gianna Drive, Clayton, Johnston County, North Carolina, United States, 27527

Gross Living Area: 2898 sq. ft



Space	Area (sq. ft)	Calculation <small>Coordinate Polygon Area Algorithm using inches</small>
FLOOR 1 (Living area)	1769	$-((750.1 + 750.1) * (-26.1 - 412.4) + (750.1 + 463.4) * (412.4 - 412.4) + (463.4 + 463.4) * (412.4 - 564.5) + (463.4 + 457.4) * (564.5 - 564.5) + (457.4 + 457.4) * (564.5 - 570.5) + (457.4 + 373.3) * (570.5 - 570.5) + (373.3 + 373.3) * (570.5 - 594.1) + (373.3 + 212.1) * (594.1 - 594.1) + (212.1 + 212.1) * (594.1 - 45.6) + (212.1 + 555.4) * (45.6 - 45.6) + (555.4 + 555.4) * (45.6 - -26.1) + (555.4 + 750.1) * (-26.1 - -26.1)) * 0.5 + 0.00694$
SCREENED PORCH	219	$-((561.4 + 561.4) * (-105.1 - -26.1) + (561.4 + 555.4) * (-26.1 - -26.1) + (555.4 + 555.4) * (-26.1 -$

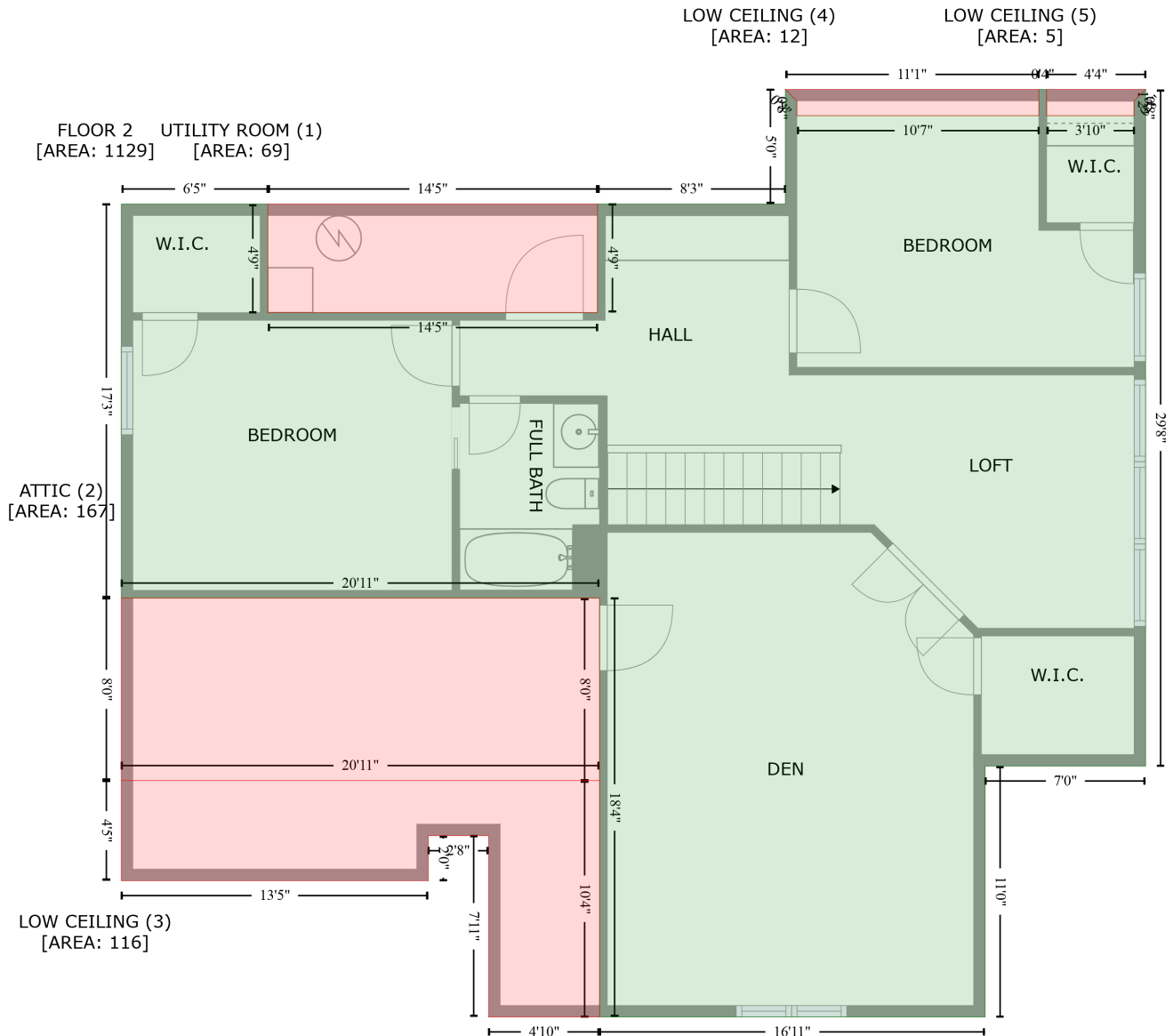
# 19 Gianna Drive, Clayton, Johnston County, North Carolina, United States, 27527

Gross Living Area: 2898 sq. ft

Space	Area (sq. ft)	Calculation <small>Coordinate Polygon Area Algorithm using inches</small>
(Non-living area)		$45.6 + (555.4 + 349) * (45.6 - 45.6) + (349 + 349) * (45.6 - -105.1) + (349 + 561.4) * (-105.1 - -105.1) * 0.5 * 0.00694$
PORCH (Non-living area)	137	$-((457.4 + 457.4) * (570.6 - 665.8) + (457.4 + 458) * (665.8 - 680.6) + (458 + 366.7) * (680.6 - 680.6) + (366.7 + 366.7) * (680.6 - 663.8) + (366.7 + 367.2) * (663.8 - 659.8) + (367.2 + 216.1) * (659.8 - 659.8) + (216.1 + 216.1) * (659.8 - 594.1) + (216.1 + 373.3) * (594.1 - 594.1) + (373.3 + 373.3) * (594.1 - 570.6) + (373.3 + 457.4) * (570.6 - 570.6)) * 0.5 * 0.00694$
DECK (Non-living area)	36	$-((349 + 349) * (-28 - 45.6) + (349 + 277.9) * (45.6 - 45.6) + (277.9 + 277.9) * (45.6 - -28) + (277.9 + 349) * (-28 - -28)) * 0.5 * 0.00694$
GARAGE (Non-living area)	509	$-((750.1 + 750.1) * (412.4 - 665.8) + (750.1 + 457.4) * (665.8 - 665.8) + (457.4 + 457.4) * (665.8 - 564.5) + (457.4 + 463.4) * (564.5 - 564.5) + (463.4 + 463.4) * (564.5 - 412.4) + (463.4 + 750.1) * (412.4 - 412.4)) * 0.5 * 0.00694$

# 19 Gianna Drive, Clayton, Johnston County, North Carolina, United States, 27527

Gross Living Area: 2898 sq. ft



Space	Area (sq. ft)	Calculation
FLOOR 2 (Living area)	1129	Coordinate Polygon Area Algorithm using inches $-((637.1 + 637.1) * (117.3 - 131.1) + (637.1 + 683.2) * (131.1 - 131.1) + (683.2 + 683.2) * (131.1 - 123.3) + (683.2 + 689.2) * (123.3 - 117.3) + (689.2 + 689.2) * (117.3 - 473) + (689.2 + 604.9) * (473 - 473) + (604.9 + 604.9) * (473 - 604.9) + (604.9 + 402.3) * (604.9 - 604.9) + (402.3 + 402.3) * (604.9 - 384.6) + (402.3 + 151.1) * (384.6 - 384.6) + (151.1 + 151.1) * (384.6 - 177.5) + (151.1 + 228.1) * (177.5 - 177.5) + (228.1 + 228.1) * (177.5 - 234.6) + (228.1 + 401.2) * (234.6 - 234.6) + (401.2 + 401.2) * (234.6 - 177.5) + (401.2 + 499.9) * (177.5 - 177.5) + (499.9 + 499.9) * (177.5 - 117.3) + (499.9 + 505.9) * (117.3 - 123.3) + (505.9 + 505.9) * (123.3 - 131.1) + (505.9 + 633.1) * (131.1 - 131.1) + (633.1 + 633.1) * (131.1 - 117.3) + (633.1 + 637.1) * (117.3 - 117.3)) * 0.5 *$

# 19 Gianna Drive, Clayton, Johnston County, North Carolina, United States, 27527

Gross Living Area: 2898 sq. ft

Space	Area (sq. ft)	Calculation <small>Coordinate Polygon Area Algorithm using inches</small>
		0.00694
UTILITY ROOM (Non-living area)	69	$-((401.2 + 401.2) * (177.5 - 234.6) + (401.2 + 228.1) * (234.6 - 234.6) + (228.1 + 228.1) * (234.6 - 177.5) + (228.1 + 401.2) * (177.5 - 177.5)) * 0.5 * 0.00694$
ATTIC (Non-living area)	167	$-((402.3 + 402.3) * (384.6 - 480.6) + (402.3 + 151.1) * (480.6 - 480.6) + (151.1 + 151.1) * (480.6 - 384.6) + (151.1 + 402.3) * (384.6 - 384.6)) * 0.5 * 0.00694$
LOW CEILING (Non-living area)	116	$-((402.3 + 402.3) * (480.6 - 604.9) + (402.3 + 344.1) * (604.9 - 604.9) + (344.1 + 344.1) * (604.9 - 509.6) + (344.1 + 312.3) * (509.6 - 509.6) + (312.3 + 312.3) * (509.6 - 533.2) + (312.3 + 151.1) * (533.2 - 533.2) + (151.1 + 151.1) * (533.2 - 480.6) + (151.1 + 402.3) * (480.6 - 480.6)) * 0.5 * 0.00694$
LOW CEILING (Non-living area)	12	$-((633.1 + 633.1) * (117.3 - 131.1) + (633.1 + 505.9) * (131.1 - 131.1) + (505.9 + 505.9) * (131.1 - 123.3) + (505.9 + 499.9) * (123.3 - 117.3) + (499.9 + 633.1) * (117.3 - 117.3)) * 0.5 * 0.00694$
LOW CEILING (Non-living area)	5	$-((689.2 + 683.2) * (117.3 - 123.3) + (683.2 + 683.2) * (123.3 - 131.1) + (683.2 + 637.1) * (131.1 - 131.1) + (637.1 + 637.1) * (131.1 - 117.3) + (637.1 + 689.2) * (117.3 - 117.3)) * 0.5 * 0.00694$