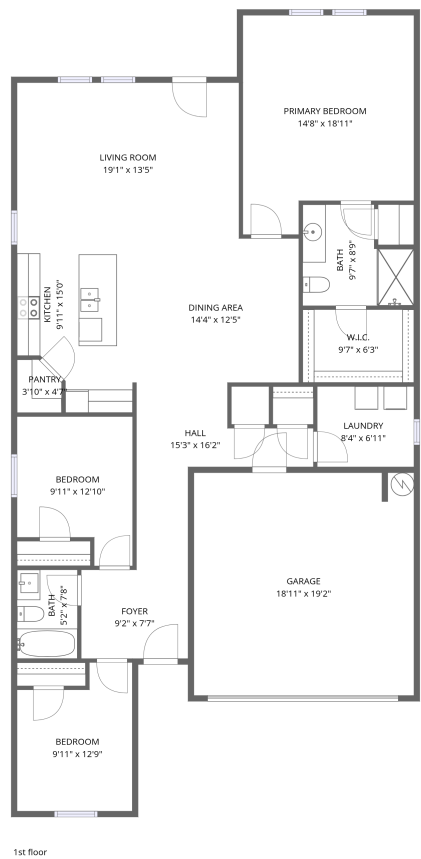


Home data report

47661 W Old Timer Rd,Maricopa,AZ,US




Total Area: 1590 sq. ft

1st Floor: 1590 sq. ft


Excluded: Garage 362 sq. ft, Walls: 127 sq. ft

Property summary

 **1** Floors

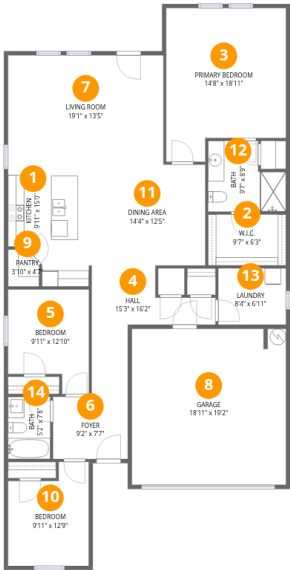
 **3** Bedrooms

 **2** Bathrooms

 **1** Garages

Home data report

47661 W Old Timer Rd,Maricopa,AZ,US



Room dimensions

Floor 1

Total:1590sqft

Excluded: 362sqft

#		Dimensions	sqft	Counted as living area
1	Kitchen	9'11" x 15'0"	131 sq. ft	Yes
2	W.I.C.	9'7" x 6'3"	60 sq. ft	Yes
3	Primary Bedroom	14'8" x 18'11"	249 sq. ft	Yes
4	Hall	15'3" x 16'2"	121 sq. ft	Yes
5	Bedroom	9'11" x 12'10"	112 sq. ft	Yes
6	Foyer	9'2" x 7'7"	70 sq. ft	Yes
7	Living Room	19'1" x 13'5"	256 sq. ft	Yes
8	Garage	18'11" x 19'2"	362 sq. ft	No
9	Pantry	3'10" x 4'7"	16 sq. ft	Yes
10	Bedroom	9'11" x 12'9"	112 sq. ft	Yes
11	Dining Area	14'4" x 12'5"	178 sq. ft	Yes

Home data report

47661 W Old Timer Rd,Maricopa,AZ,US

#		Dimensions	sqft	Counted as living area
12	Bath	9'7" x 8'9"	71 sq. ft	Yes
13	Laundry	8'4" x 6'11"	58 sq. ft	Yes
14	Bath	5'2" x 7'8"	40 sq. ft	Yes

1 Floor 1 - Kitchen



Dimensions: 9'11" x 15'0"
Area: 131 sq. ft
Counted as living area: Yes

Heated: Yes
Finished: Yes
Enclosed: Yes
Contiguous: Yes
Permitted: Yes
Wet space: No
Addition: No
Conversion: No

2 Floor 1 - W.I.C.



Dimensions: 9'7" x 6'3"
Area: 60 sq. ft
Counted as living area: Yes

Heated: Yes
Finished: Yes
Enclosed: Yes
Contiguous: Yes
Permitted: Yes
Wet space: No
Addition: No
Conversion: No

3 Floor 1 - Primary Bedroom



Dimensions: 14'8" x 18'11"
Area: 249 sq. ft
Counted as living area: Yes

Heated: Yes
Finished: Yes
Enclosed: Yes
Contiguous: Yes
Permitted: Yes
Wet space: No
Addition: No
Conversion: No

4 Floor 1 - Hall



Dimensions: 15'3" x 16'2"
Area: 121 sq. ft
Counted as living area: Yes

Heated: Yes
Finished: Yes
Enclosed: Yes
Contiguous: Yes
Permitted: Yes
Wet space: No
Addition: No
Conversion: No

5 Floor 1 - Bedroom



Dimensions: 9'11" x 12'10"
Area: 112 sq. ft
Counted as living area: Yes

Heated: Yes
Finished: Yes
Enclosed: Yes
Contiguous: Yes
Permitted: Yes
Wet space: No
Addition: No
Conversion: No

6 Floor 1 - Foyer



Dimensions: 9'2" x 7'7"
Area: 70 sq. ft
Counted as living area: Yes

Heated: Yes
Finished: Yes
Enclosed: Yes
Contiguous: Yes
Permitted: Yes
Wet space: No
Addition: No
Conversion: No

7 Floor 1 - Living Room



Dimensions: 19'1" x 13'5"
Area: 256 sq. ft
Counted as living area: Yes

Heated: Yes
Finished: Yes
Enclosed: Yes
Contiguous: Yes
Permitted: Yes
Wet space: No
Addition: No
Conversion: No

8 Floor 1 - Garage



Dimensions: 18'11" x 19'2"
Area: 362 sq. ft
Counted as living area: No

Heated: No
Finished: No
Enclosed: Yes
Contiguous: Yes
Permitted: Yes
Wet space: No
Addition: No
Conversion: No

9 Floor 1 - Pantry



Dimensions: 3'10" x 4'7"
Area: 16 sq. ft
Counted as living area: Yes

Heated: Yes
Finished: Yes
Enclosed: Yes
Contiguous: Yes
Permitted: Yes
Wet space: No
Addition: No
Conversion: No

10 Floor 1 - Bedroom



Dimensions: 9'11" x 12'9"
Area: 112 sq. ft
Counted as living area: Yes

Heated: Yes
Finished: Yes
Enclosed: Yes
Contiguous: Yes
Permitted: Yes
Wet space: No
Addition: No
Conversion: No

11 Floor 1 - Dining Area



Dimensions: 14'4" x 12'5"
Area: 178 sq. ft
Counted as living area: Yes

Heated: Yes
Finished: Yes
Enclosed: Yes
Contiguous: Yes
Permitted: Yes
Wet space: No
Addition: No
Conversion: No

12 Floor 1 - Bath



Dimensions: 9'7" x 8'9"
Area: 71 sq. ft
Counted as living area: Yes

Heated: Yes
Finished: Yes
Enclosed: Yes
Contiguous: Yes
Permitted: Yes
Wet space: Yes
Addition: No
Conversion: No

13 Floor 1 - Laundry



Dimensions: 8'4" x 6'11"
Area: 58 sq. ft
Counted as living area: Yes

Heated: Yes
Finished: Yes
Enclosed: Yes
Contiguous: Yes
Permitted: Yes
Wet space: No
Addition: No
Conversion: No

14 Floor 1 - Bath



Dimensions: 5'2" x 7'8"
Area: 40 sq. ft
Counted as living area: Yes

Heated: Yes
Finished: Yes
Enclosed: Yes
Contiguous: Yes
Permitted: Yes
Wet space: Yes
Addition: No
Conversion: No