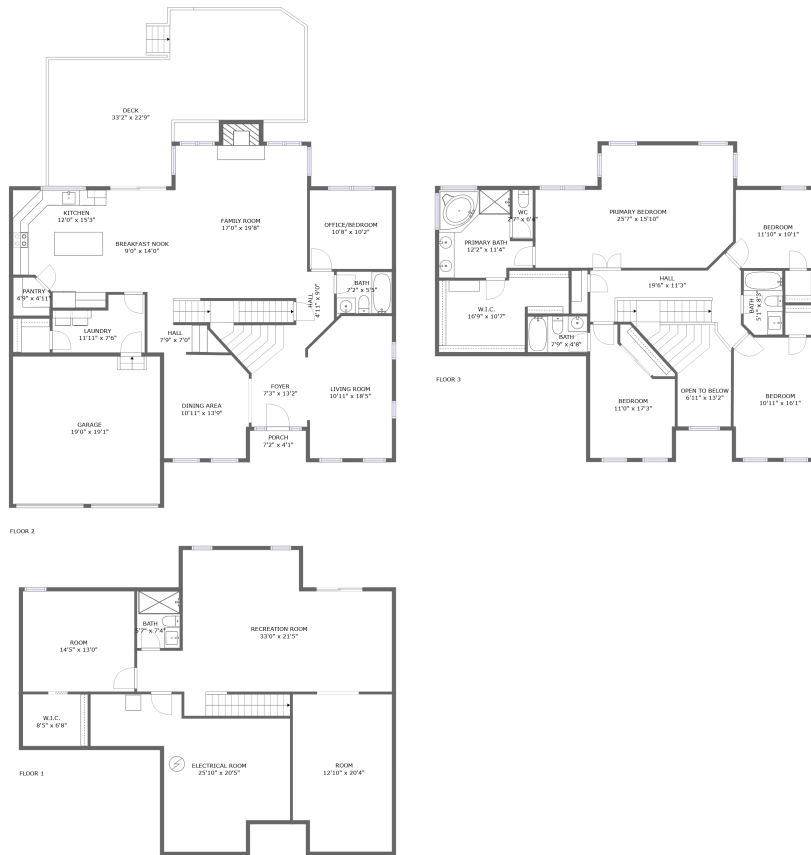



17000 Charlesbourg Pl, Round Hill, VA, US



Property summary

 **1** Garages

 **4** Bedrooms

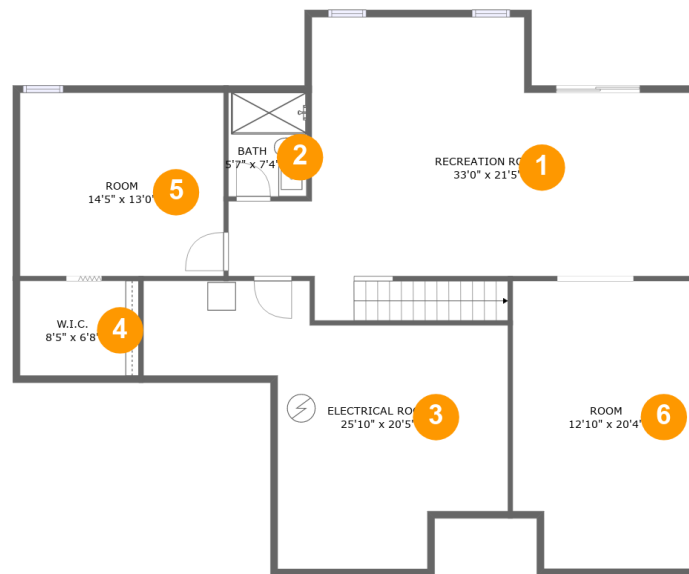
 **5** Bathrooms

 **0** Half baths

 **3** Floors

 **4,250** Gross living area sqft

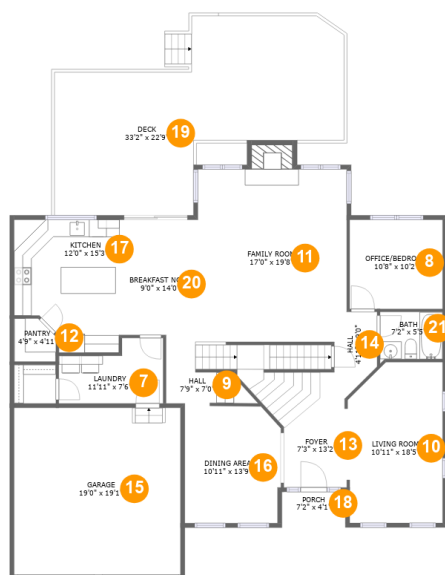
 **5,605** Total sqft

17000 Charlesbourg Pl, Round Hill, VA, US**Room dimensions**

Floor 1

Total sqft: 1498 Living area: 1147

#		Dimensions	sqft	Counted as living area
1	Recreation Room	33'0" x 21'5"	484 sq. ft	Yes
2	Bath	5'7" x 7'4"	41 sq. ft	Yes
3	Electrical Room	25'10" x 20'5"	329 sq. ft	No
4	W.I.C.	8'5" x 6'8"	56 sq. ft	Yes
5	Room	14'5" x 13'0"	187 sq. ft	Yes
6	Room	12'10" x 20'4"	253 sq. ft	Yes

17000 Charlesbourg Pl, Round Hill, VA, US**Room dimensions**

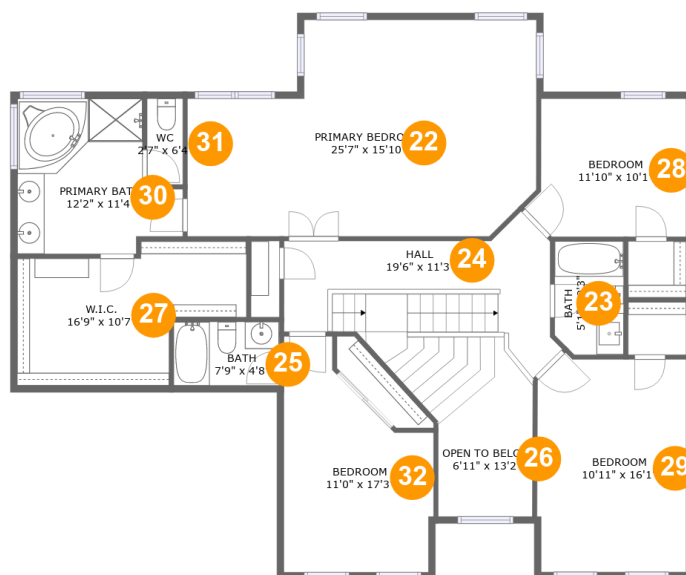
Floor 2

Total sqft: 2526 Living area: 1592

#		Dimensions	sqft	Counted as living area
7	Laundry	11'11" x 7'6"	75 sq. ft	Yes
8	OFFICE/BEDROOM	10'8" x 10'2"	108 sq. ft	Yes
9	Hall	7'9" x 7'0"	89 sq. ft	Yes
10	Living Room	10'11" x 18'5"	190 sq. ft	Yes
11	Family Room	17'0" x 19'8"	349 sq. ft	Yes
12	Pantry	4'9" x 4'11"	22 sq. ft	Yes
13	Foyer	7'3" x 13'2"	112 sq. ft	Yes
14	Hall	4'11" x 9'0"	33 sq. ft	Yes
15	Garage	19'0" x 19'1"	363 sq. ft	No
16	Dining Area	10'11" x 13'9"	144 sq. ft	Yes
17	Kitchen	12'0" x 15'3"	164 sq. ft	Yes

17000 Charlesbourg Pl, Round Hill, VA, US

#		Dimensions	sqft	Counted as living area
18	Porch	7'2" x 4'1"	30 sq. ft	No
19	Deck	33'2" x 22'9"	506 sq. ft	No
20	Breakfast Nook	9'0" x 14'0"	121 sq. ft	Yes
21	Bath	7'2" x 5'5"	39 sq. ft	Yes

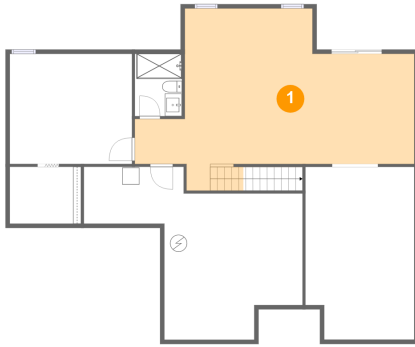
17000 Charlesbourg Pl, Round Hill, VA, US**Room dimensions**

Floor 3

Total sqft: 1581 Living area: 1511

#		Dimensions	sqft	Counted as living area
22	Primary Bedroom	25'7" x 15'10"	350 sq. ft	Yes
23	Bath	5'1" x 8'3"	41 sq. ft	Yes
24	Hall	19'6" x 11'3"	185 sq. ft	Yes
25	Bath	7'9" x 4'8"	36 sq. ft	Yes
26	Open To Below	6'11" x 13'2"	67 sq. ft	No
27	W.I.C.	16'9" x 10'7"	137 sq. ft	Yes
28	Bedroom	11'10" x 10'1"	109 sq. ft	Yes
29	Bedroom	10'11" x 16'1"	168 sq. ft	Yes
30	Primary Bath	12'2" x 11'4"	114 sq. ft	Yes
31	WC	2'7" x 6'4"	16 sq. ft	Yes
32	Bedroom	11'0" x 17'3"	146 sq. ft	Yes

1 Floor 1 - Recreation Room



Dimensions: 33'0" x 21'5"
Area: 484 sq. ft
Counted as living area: Yes

Heated: Yes
Finished: Yes
Enclosed: Yes
Contiguous: Yes
Permitted: Yes
Wet space: No
Addition: No
Conversion: No

2 Floor 1 - Bath

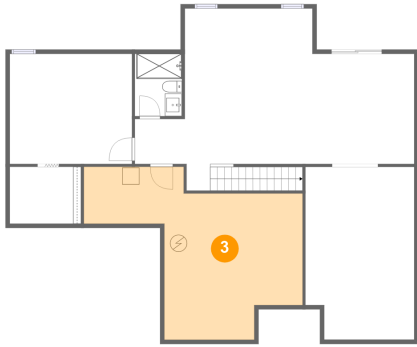


Dimensions: 5'7" x 7'4"
Area: 41 sq. ft
Counted as living area: Yes

Heated: Yes
Finished: Yes
Enclosed: Yes
Contiguous: Yes
Permitted: Yes
Wet space: Yes
Addition: No
Conversion: No

17000 Charlesbourg Pl, Round Hill, VA, US

3 Floor 1 - Electrical Room



Dimensions: 25'10" x 20'5"
Area: 329 sq. ft
Counted as living area: No

Heated: No
Finished: No
Enclosed: Yes
Contiguous: Yes
Permitted: Yes
Wet space: No
Addition: No
Conversion: No

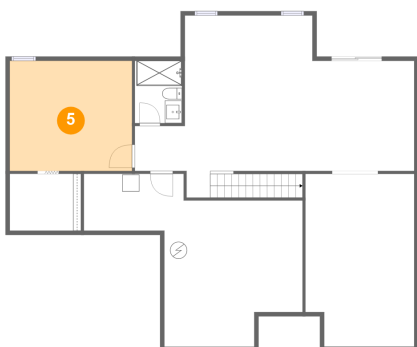
4 Floor 1 - W.I.C.



Dimensions: 8'5" x 6'8"
Area: 56 sq. ft
Counted as living area: Yes

Heated: Yes
Finished: Yes
Enclosed: Yes
Contiguous: Yes
Permitted: Yes
Wet space: No
Addition: No
Conversion: No

5 Floor 1 - Room

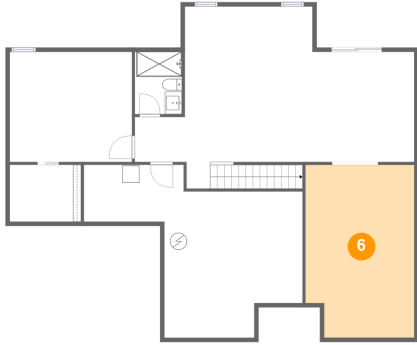


Dimensions: 14'5" x 13'0"
Area: 187 sq. ft
Counted as living area: Yes

Heated: Yes
Finished: Yes
Enclosed: Yes
Contiguous: Yes
Permitted: Yes
Wet space: No
Addition: No
Conversion: No

17000 Charlesbourg Pl, Round Hill, VA, US

6 Floor 1 - Room



Dimensions: 12'10" x 20'4"
Area: 253 sq. ft
Counted as living area: Yes

Heated: Yes
Finished: Yes
Enclosed: Yes
Contiguous: Yes
Permitted: Yes
Wet space: No
Addition: No
Conversion: No

7 Floor 2 - Laundry



Dimensions: 11'11" x 7'6"
Area: 75 sq. ft
Counted as living area: Yes

Heated: Yes
Finished: Yes
Enclosed: Yes
Contiguous: Yes
Permitted: Yes
Wet space: No
Addition: No
Conversion: No

8 Floor 2 - OFFICE/BEDROOM



Dimensions: 10'8" x 10'2"
Area: 108 sq. ft
Counted as living area: Yes

Heated: Yes
Finished: Yes
Enclosed: Yes
Contiguous: Yes
Permitted: Yes
Wet space: No
Addition: No
Conversion: No

17000 Charlesbourg Pl, Round Hill, VA, US

9 Floor 2 - Hall



Dimensions: 7'9" x 7'0"
Area: 89 sq. ft
Counted as living area: Yes

Heated: Yes
Finished: Yes
Enclosed: Yes
Contiguous: Yes
Permitted: Yes
Wet space: No
Addition: No
Conversion: No

10 Floor 2 - Living Room



Dimensions: 10'11" x 18'5"
Area: 190 sq. ft
Counted as living area: Yes

Heated: Yes
Finished: Yes
Enclosed: Yes
Contiguous: Yes
Permitted: Yes
Wet space: No
Addition: No
Conversion: No

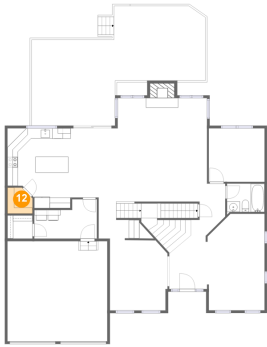
11 Floor 2 - Family Room



Dimensions: 17'0" x 19'8"
Area: 349 sq. ft
Counted as living area: Yes

Heated: Yes
Finished: Yes
Enclosed: Yes
Contiguous: Yes
Permitted: Yes
Wet space: No
Addition: No
Conversion: No

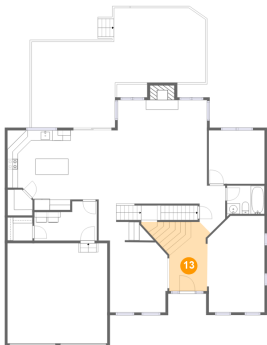
12 Floor 2 - Pantry



Dimensions: 4'9" x 4'11"
Area: 22 sq. ft
Counted as living area: Yes

Heated: Yes
Finished: Yes
Enclosed: Yes
Contiguous: Yes
Permitted: Yes
Wet space: No
Addition: No
Conversion: No

13 Floor 2 - Foyer



Dimensions: 7'3" x 13'2"
Area: 112 sq. ft
Counted as living area: Yes

Heated: Yes
Finished: Yes
Enclosed: Yes
Contiguous: Yes
Permitted: Yes
Wet space: No
Addition: No
Conversion: No

14 Floor 2 - Hall



Dimensions: 4'11" x 9'0"
Area: 33 sq. ft
Counted as living area: Yes

Heated: Yes
Finished: Yes
Enclosed: Yes
Contiguous: Yes
Permitted: Yes
Wet space: No
Addition: No
Conversion: No

17000 Charlesbourg Pl, Round Hill, VA, US

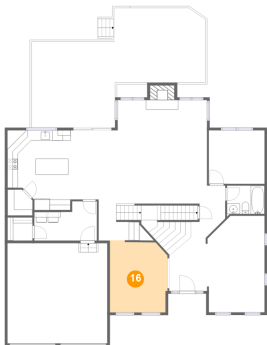
15 Floor 2 - Garage



Dimensions: 19'0" x 19'1"
Area: 363 sq. ft
Counted as living area: No

Heated: No
Finished: No
Enclosed: Yes
Contiguous: Yes
Permitted: Yes
Wet space: No
Addition: No
Conversion: No

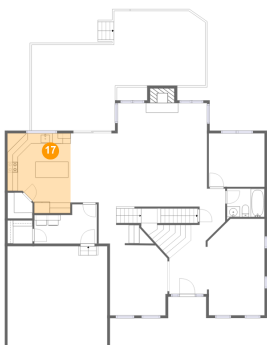
16 Floor 2 - Dining Area



Dimensions: 10'11" x 13'9"
Area: 144 sq. ft
Counted as living area: Yes

Heated: Yes
Finished: Yes
Enclosed: Yes
Contiguous: Yes
Permitted: Yes
Wet space: No
Addition: No
Conversion: No

17 Floor 2 - Kitchen



Dimensions: 12'0" x 15'3"
Area: 164 sq. ft
Counted as living area: Yes

Heated: Yes
Finished: Yes
Enclosed: Yes
Contiguous: Yes
Permitted: Yes
Wet space: No
Addition: No
Conversion: No

17000 Charlesbourg Pl, Round Hill, VA, US**18 Floor 2 - Porch**

Dimensions: 7'2" x 4'1"
Area: 30 sq. ft
Counted as living area: No

Heated: No
Finished: Yes
Enclosed: No
Contiguous: Yes
Permitted: Yes
Wet space: No
Addition: No
Conversion: No

19 Floor 2 - Deck

Dimensions: 33'2" x 22'9"
Area: 506 sq. ft
Counted as living area: No

Heated: No
Finished: Yes
Enclosed: No
Contiguous: Yes
Permitted: Yes
Wet space: No
Addition: No
Conversion: No

20 Floor 2 - Breakfast Nook

Dimensions: 9'0" x 14'0"
Area: 121 sq. ft
Counted as living area: Yes

Heated: Yes
Finished: Yes
Enclosed: Yes
Contiguous: Yes
Permitted: Yes
Wet space: No
Addition: No
Conversion: No

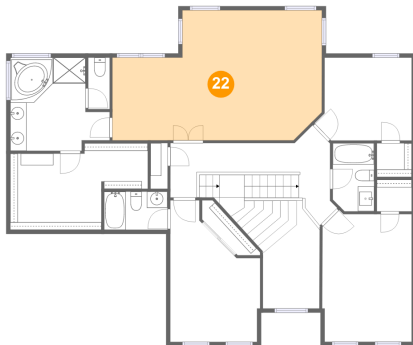
21 Floor 2 - Bath



Dimensions: 7'2" x 5'5"
Area: 39 sq. ft
Counted as living area: Yes

Heated: Yes
Finished: Yes
Enclosed: Yes
Contiguous: Yes
Permitted: Yes
Wet space: Yes
Addition: No
Conversion: No

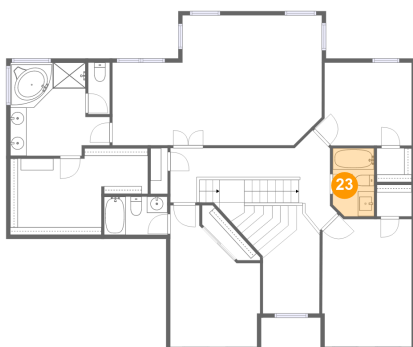
22 Floor 3 - Primary Bedroom



Dimensions: 25'7" x 15'10"
Area: 350 sq. ft
Counted as living area: Yes

Heated: Yes
Finished: Yes
Enclosed: Yes
Contiguous: Yes
Permitted: Yes
Wet space: No
Addition: No
Conversion: No

23 Floor 3 - Bath

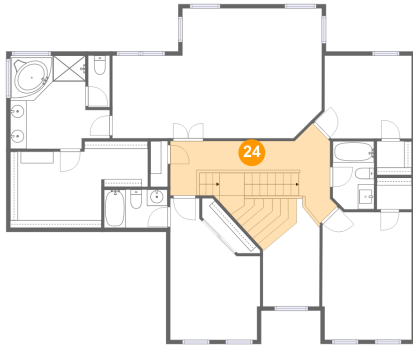


Dimensions: 5'1" x 8'3"
Area: 41 sq. ft
Counted as living area: Yes

Heated: Yes
Finished: Yes
Enclosed: Yes
Contiguous: Yes
Permitted: Yes
Wet space: Yes
Addition: No
Conversion: No

17000 Charlesbourg Pl, Round Hill, VA, US

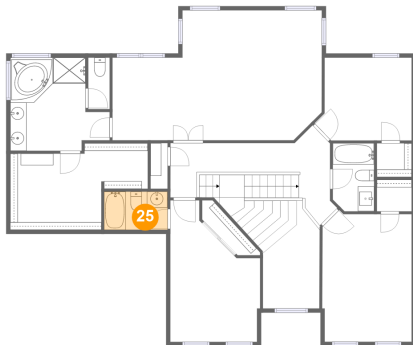
24 Floor 3 - Hall



Dimensions: 19'6" x 11'3"
Area: 185 sq. ft
Counted as living area: Yes

Heated: Yes
Finished: Yes
Enclosed: Yes
Contiguous: Yes
Permitted: Yes
Wet space: No
Addition: No
Conversion: No

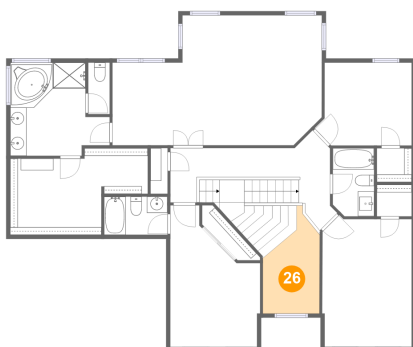
25 Floor 3 - Bath



Dimensions: 7'9" x 4'8"
Area: 36 sq. ft
Counted as living area: Yes

Heated: Yes
Finished: Yes
Enclosed: Yes
Contiguous: Yes
Permitted: Yes
Wet space: Yes
Addition: No
Conversion: No

26 Floor 3 - Open To Below

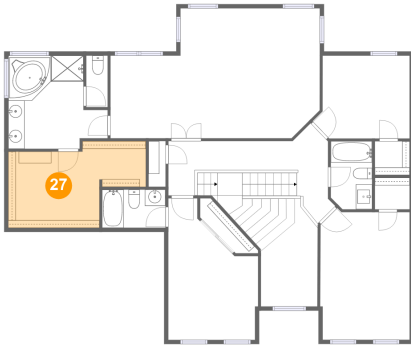


Dimensions: 6'11" x 13'2"
Area: 67 sq. ft
Counted as living area: No

Heated: No
Finished: No
Enclosed: No
Contiguous: Yes
Permitted: No
Wet space: No
Addition: No
Conversion: No

17000 Charlesbourg Pl, Round Hill, VA, US

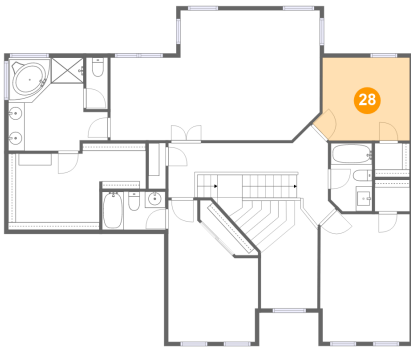
27 Floor 3 - W.I.C.



Dimensions: 16'9" x 10'7"
Area: 137 sq. ft
Counted as living area: Yes

Heated: Yes
Finished: Yes
Enclosed: Yes
Contiguous: Yes
Permitted: Yes
Wet space: No
Addition: No
Conversion: No

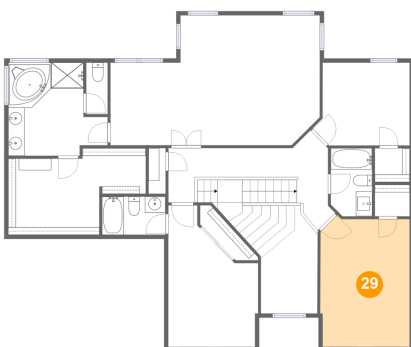
28 Floor 3 - Bedroom



Dimensions: 11'10" x 10'1"
Area: 109 sq. ft
Counted as living area: Yes

Heated: Yes
Finished: Yes
Enclosed: Yes
Contiguous: Yes
Permitted: Yes
Wet space: No
Addition: No
Conversion: No

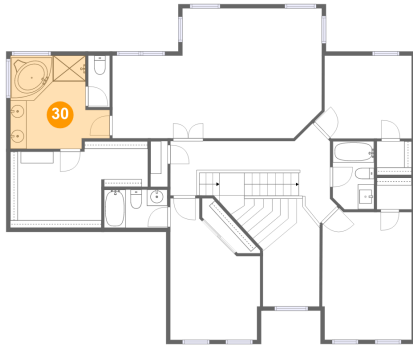
29 Floor 3 - Bedroom



Dimensions: 10'11" x 16'1"
Area: 168 sq. ft
Counted as living area: Yes

Heated: Yes
Finished: Yes
Enclosed: Yes
Contiguous: Yes
Permitted: Yes
Wet space: No
Addition: No
Conversion: No

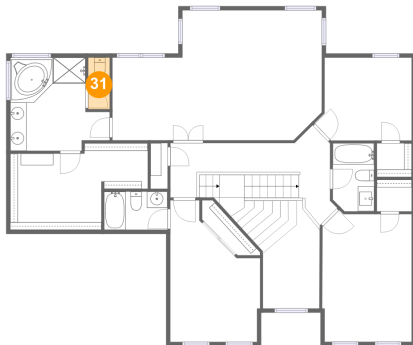
30 Floor 3 - Primary Bath



Dimensions: 12'2" x 11'4"
Area: 114 sq. ft
Counted as living area: Yes

Heated: Yes
Finished: Yes
Enclosed: Yes
Contiguous: Yes
Permitted: Yes
Wet space: Yes
Addition: No
Conversion: No

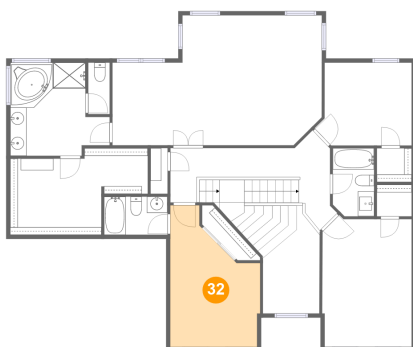
31 Floor 3 - WC



Dimensions: 2'7" x 6'4"
Area: 16 sq. ft
Counted as living area: Yes

Heated: Yes
Finished: Yes
Enclosed: Yes
Contiguous: Yes
Permitted: Yes
Wet space: Yes
Addition: No
Conversion: No

32 Floor 3 - Bedroom



Dimensions: 11'0" x 17'3"
Area: 146 sq. ft
Counted as living area: Yes

Heated: Yes
Finished: Yes
Enclosed: Yes
Contiguous: Yes
Permitted: Yes
Wet space: No
Addition: No
Conversion: No