

6537 Swanson St

Chilliwack BC V2R 1R2

Total Area 1,405 SQ.FT.

Garage Area: 470 SQ.FT.

Workshop Area: 108 SQ.FT.

3



BEDROOMS

2

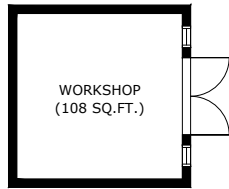


BATHROOMS

1,405

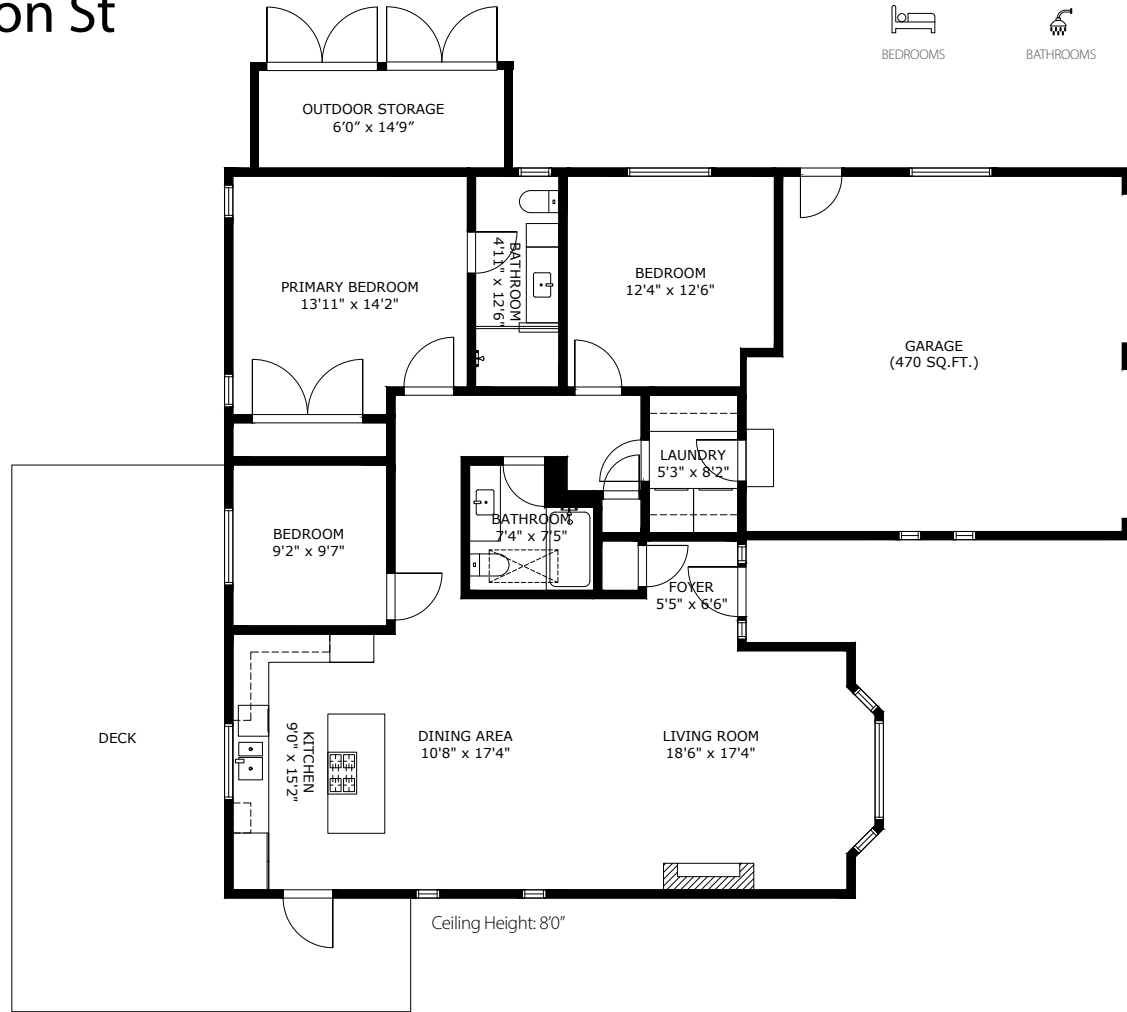


TOTAL SQ.FT.



WORKSHOP
(108 SQ.FT.)

Ceiling Height: 9'0"



6537 SWANSON ST CHILLIWACK BC V2R 1R2

Measurements are approximate and may not be to scale. Gross measurements provided by agent.
The floor plan illustration is not suitable for construction/architectural purposes.
This communication is not intended to cause or induce breach of an existing agency agreement

3D IMMERSIVE
Tours Photos Floor Plans

Professionally measured by 3D Immersive Marketing Ltd

Lead Floor Planner: *Sara Alexander*
Quality Assurance: *Dianne Graham*