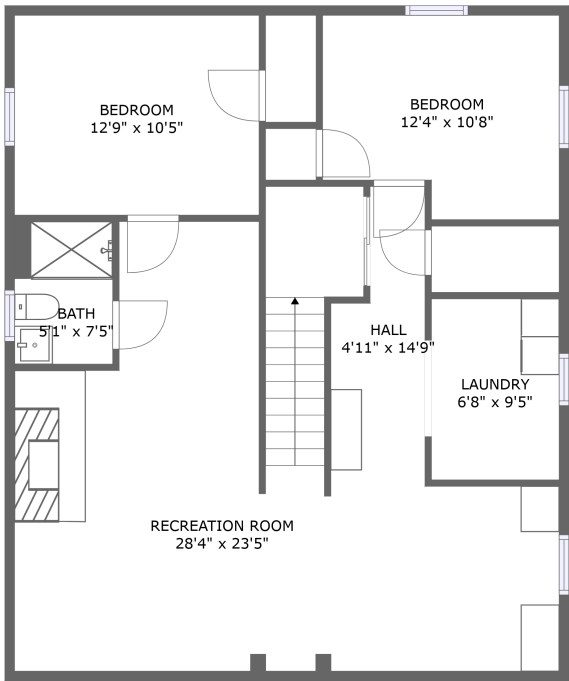
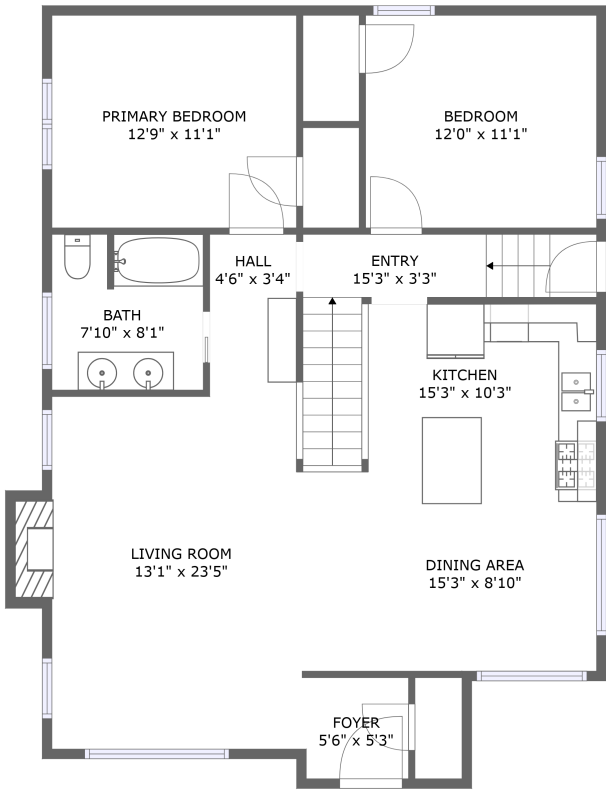


Home report

220 West 4th Avenue, Cheyenne, Laramie County, Wyoming,
United States, 82001



FLOOR 1



FLOOR 2


Total Area: 2033 sq. ft

Floor 1: 966 sq. ft, Floor 2: 1067 sq. ft

Excluded: Fireplace 12 sq. ft, Walls: 129 sq. ft

Property summary

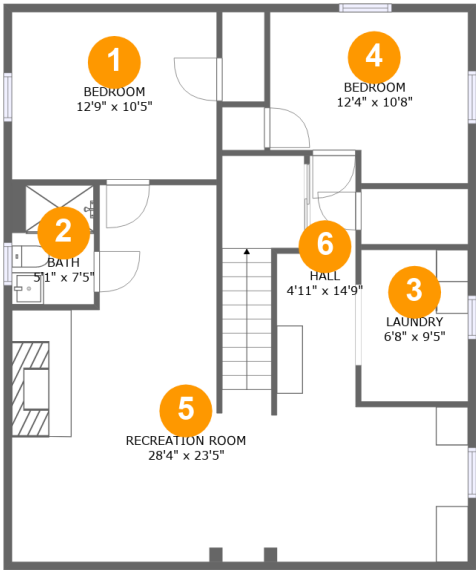
 2 Floors

 4 Bedrooms

 2 Bathrooms

Home report

220 West 4th Avenue, Cheyenne, Laramie County, Wyoming,
United States, 82001



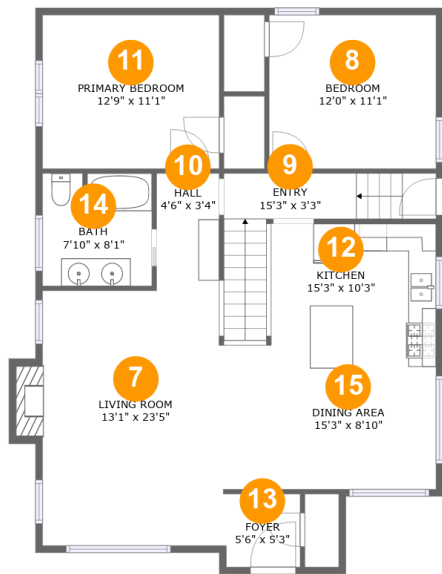
Room dimensions

Floor 1 Total:966sqft Excluded: 0sqft

#		Max Dimensions	sqft	Included
1	Bedroom	12'9" x 10'5"	132 sq. ft	Yes
2	Bath	5'1" x 7'5"	38 sq. ft	Yes
3	Laundry	6'8" x 9'5"	63 sq. ft	Yes
4	Bedroom	12'4" x 10'8"	119 sq. ft	Yes
5	Recreation Room	28'4" x 23'5"	468 sq. ft	Yes
6	Hall	4'11" x 14'9"	60 sq. ft	Yes

Home report

220 West 4th Avenue, Cheyenne, Laramie County, Wyoming,
United States, 82001



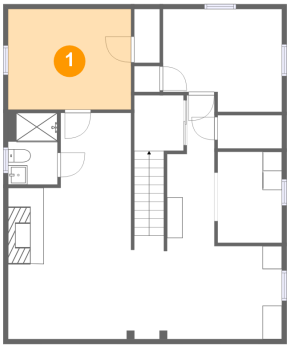
Room dimensions

Floor 2 Total:1067sqft Excluded: 12sqft

#		Max Dimensions	sqft	Included
7	Living Room	13'1" x 23'5"	272 sq. ft	Yes
8	Bedroom	12'0" x 11'1"	133 sq. ft	Yes
9	Entry	15'3" x 3'3"	50 sq. ft	Yes
10	Hall	4'6" x 3'4"	15 sq. ft	Yes
11	Primary Bedroom	12'9" x 11'1"	141 sq. ft	Yes
12	Kitchen	15'3" x 10'3"	158 sq. ft	Yes
13	Foyer	5'6" x 5'3"	29 sq. ft	Yes
14	Bath	7'10" x 8'1"	63 sq. ft	Yes
15	Dining Area	15'3" x 8'10"	135 sq. ft	Yes

220 West 4th Avenue, Cheyenne, Laramie County, Wyoming,
United States, 82001

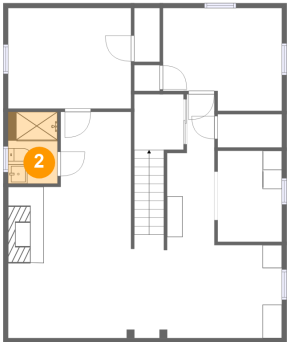
1 Floor 1 - Bedroom



Max Dimensions: 12'9" x 10'5"
Calculated Area: 132 sq. ft
Included: Yes

Heated: Yes
Finished: Yes
Enclosed: Yes
Contiguous: Yes
Permitted: Yes
Wet space: No
Addition: No
Conversion: No

2 Floor 1 - Bath

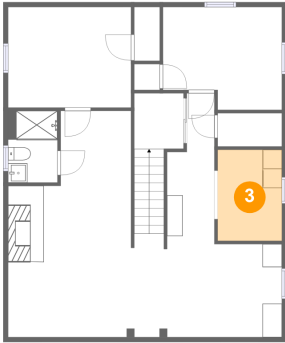


Max Dimensions: 5'1" x 7'5"
Calculated Area: 38 sq. ft
Included: Yes

Heated: Yes
Finished: Yes
Enclosed: Yes
Contiguous: Yes
Permitted: Yes
Wet space: Yes
Addition: No
Conversion: No

220 West 4th Avenue, Cheyenne, Laramie County, Wyoming,
United States, 82001

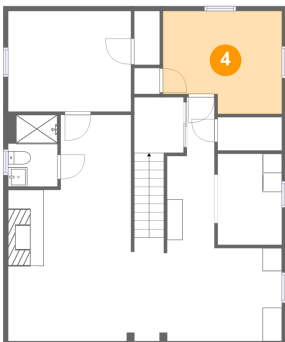
3 Floor 1 - Laundry



Max Dimensions: 6'8" x 9'5"
Calculated Area: 63 sq. ft
Included: Yes

Heated: Yes
Finished: Yes
Enclosed: Yes
Contiguous: Yes
Permitted: Yes
Wet space: No
Addition: No
Conversion: No

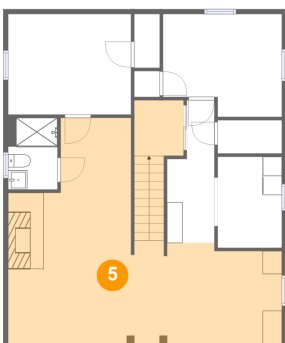
4 Floor 1 - Bedroom



Max Dimensions: 12'4" x 10'8"
Calculated Area: 119 sq. ft
Included: Yes

Heated: Yes
Finished: Yes
Enclosed: Yes
Contiguous: Yes
Permitted: Yes
Wet space: No
Addition: No
Conversion: No

5 Floor 1 - Recreation Room

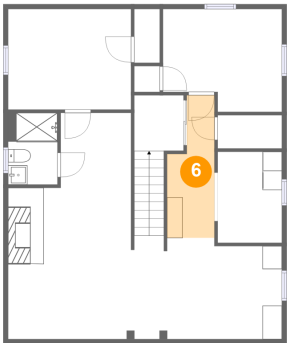


Max Dimensions: 28'4" x 23'5"
Calculated Area: 468 sq. ft
Included: Yes

Heated: Yes
Finished: Yes
Enclosed: Yes
Contiguous: Yes
Permitted: Yes
Wet space: No
Addition: No
Conversion: No

220 West 4th Avenue, Cheyenne, Laramie County, Wyoming,
United States, 82001

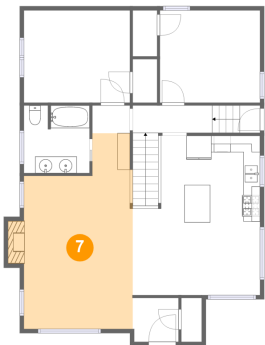
6 Floor 1 - Hall



Max Dimensions: 4'11" x 14'9"
Calculated Area: 60 sq. ft
Included: Yes

Heated: Yes
Finished: Yes
Enclosed: Yes
Contiguous: Yes
Permitted: Yes
Wet space: No
Addition: No
Conversion: No

7 Floor 2 - Living Room



Max Dimensions: 13'1" x 23'5"
Calculated Area: 272 sq. ft
Included: Yes

Heated: Yes
Finished: Yes
Enclosed: Yes
Contiguous: Yes
Permitted: Yes
Wet space: No
Addition: No
Conversion: No

8 Floor 2 - Bedroom



Max Dimensions: 12'0" x 11'1"
Calculated Area: 133 sq. ft
Included: Yes

Heated: Yes
Finished: Yes
Enclosed: Yes
Contiguous: Yes
Permitted: Yes
Wet space: No
Addition: No
Conversion: No

220 West 4th Avenue, Cheyenne, Laramie County, Wyoming,
United States, 82001

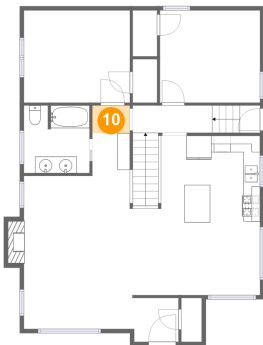
9 Floor 2 - Entry



Max Dimensions: 15'3" x 3'3"
Calculated Area: 50 sq. ft
Included: Yes

Heated: Yes
Finished: Yes
Enclosed: Yes
Contiguous: Yes
Permitted: Yes
Wet space: No
Addition: No
Conversion: No

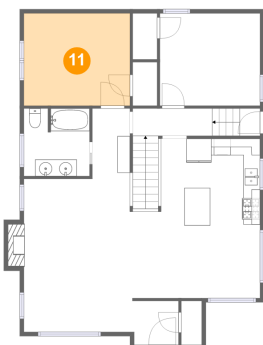
10 Floor 2 - Hall



Max Dimensions: 4'6" x 3'4"
Calculated Area: 15 sq. ft
Included: Yes

Heated: Yes
Finished: Yes
Enclosed: Yes
Contiguous: Yes
Permitted: Yes
Wet space: No
Addition: No
Conversion: No

11 Floor 2 - Primary Bedroom



Max Dimensions: 12'9" x 11'1"
Calculated Area: 141 sq. ft
Included: Yes

Heated: Yes
Finished: Yes
Enclosed: Yes
Contiguous: Yes
Permitted: Yes
Wet space: No
Addition: No
Conversion: No

220 West 4th Avenue, Cheyenne, Laramie County, Wyoming,
United States, 82001

12 Floor 2 - Kitchen



Max Dimensions: 15'3" x 10'3"
Calculated Area: 158 sq. ft
Included: Yes

Heated: Yes
Finished: Yes
Enclosed: Yes
Contiguous: Yes
Permitted: Yes
Wet space: No
Addition: No
Conversion: No

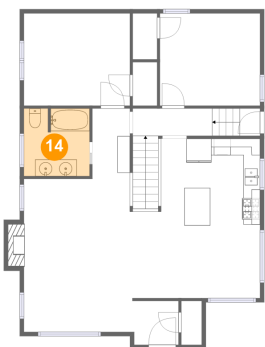
13 Floor 2 - Foyer



Max Dimensions: 5'6" x 5'3"
Calculated Area: 29 sq. ft
Included: Yes

Heated: Yes
Finished: Yes
Enclosed: Yes
Contiguous: Yes
Permitted: Yes
Wet space: No
Addition: No
Conversion: No

14 Floor 2 - Bath

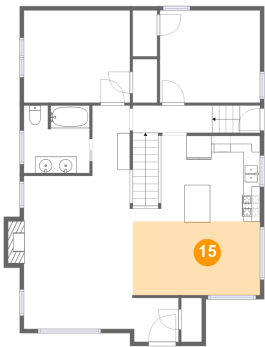


Max Dimensions: 7'10" x 8'1"
Calculated Area: 63 sq. ft
Included: Yes

Heated: Yes
Finished: Yes
Enclosed: Yes
Contiguous: Yes
Permitted: Yes
Wet space: Yes
Addition: No
Conversion: No

220 West 4th Avenue, Cheyenne, Laramie County, Wyoming,
United States, 82001

15 Floor 2 - Dining Area



Max Dimensions: 15'3" x 8'10"
Calculated Area: 135 sq. ft
Included: Yes

Heated: Yes
Finished: Yes
Enclosed: Yes
Contiguous: Yes
Permitted: Yes
Wet space: No
Addition: No
Conversion: No