

# 667 Richmond Close, East Lake, Tarpon Springs, Pinellas County, Florida, United States, 34688



## Property Summary

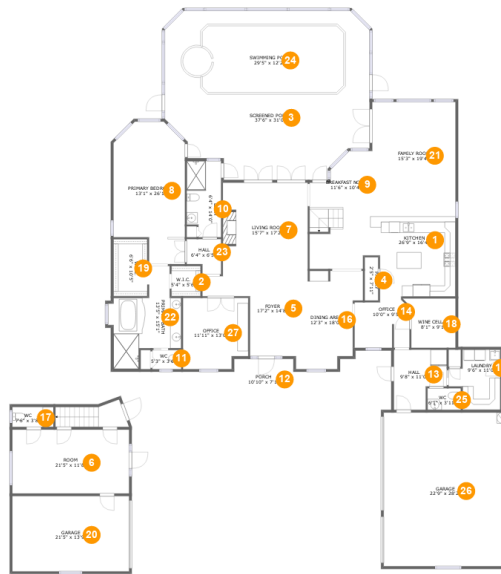
**2** garages    **5** bedrooms    **5** bathrooms    **2** half baths

**3** floors

**5,133** Gross Living Area sqft

**7,721** total sqft

# 667 Richmond Close, East Lake, Tarpon Springs, Pinellas County, Florida, United States, 34688



## Room Dimensions

### Floor 1

Total sqft: 5033

Living area: 3119

#	Room name	Dimensions	Area (sqft)	Counted as Living Area
1	Kitchen	26'9" x 16'4"	363 sq. ft	Yes
2	W.i.c.	5'4" x 5'6"	30 sq. ft	Yes
3	Screened Porch	37'6" x 31'0"	1049 sq. ft	No
4	Pantry	2'5" x 7'11"	19 sq. ft	Yes
5	Foyer	17'2" x 14'8"	155 sq. ft	Yes
6	Room	21'5" x 11'8"	250 sq. ft	Yes
7	Living Room	15'7" x 17'2"	265 sq. ft	Yes
8	Primary Bedroom	13'1" x 26'1"	295 sq. ft	Yes
9	Breakfast Nook	11'6" x 10'4"	90 sq. ft	Yes
10	Bath	6'4" x 14'0"	83 sq. ft	Yes
11	Wc	5'3" x 3'6"	18 sq. ft	Yes

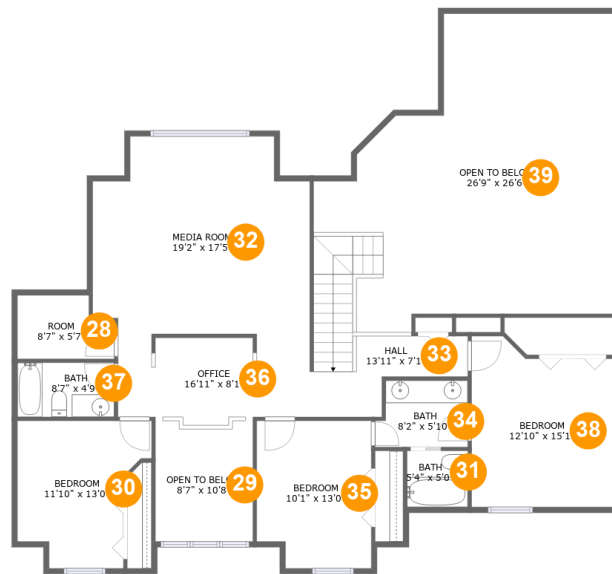
Scan captured on Wed, 12 Jun 2024 15:16:02 GMT

Information is calculated by CubiCasa technology; deemed highly reliable but not guaranteed.

**667 Richmond Close, East Lake, Tarpon Springs,  
Pinellas County, Florida, United States, 34688**

#	Room name	Dimensions	Area (sqft)	Counted as Living Area
12	Porch	10'10" x 7'1"	77 sq. ft	No
13	Hall	9'8" x 11'0"	90 sq. ft	Yes
14	Office	10'0" x 9'5"	86 sq. ft	Yes
15	Laundry	9'6" x 11'0"	85 sq. ft	Yes
16	Dining Area	12'3" x 18'0"	187 sq. ft	Yes
17	Wc	7'6" x 3'8"	28 sq. ft	Yes
18	Wine Cellar	8'1" x 9'1"	75 sq. ft	No
19	W.i.c.	6'6" x 10'5"	66 sq. ft	Yes
20	Garage	21'5" x 13'9"	295 sq. ft	No
21	Family Room	15'3" x 19'4"	294 sq. ft	Yes
22	Primary Bath	13'5" x 15'1"	158 sq. ft	Yes
23	Hall	6'4" x 6'5"	35 sq. ft	Yes
24	Swimming Pool	29'5" x 12'2"	327 sq. ft	No
25	Wc	6'1" x 3'11"	24 sq. ft	Yes
26	Garage	22'9" x 28'2"	639 sq. ft	No
27	Office	11'11" x 13'0"	148 sq. ft	Yes

# 667 Richmond Close, East Lake, Tarpon Springs, Pinellas County, Florida, United States, 34688



## Room Dimensions

Floor 2

Total sqft: 2019

Living area: 1345

#	Room name	Dimensions	Area (sqft)	Counted as Living Area
28	Room	8'7" x 5'7"	43 sq. ft	Yes
29	Open To Below	8'7" x 10'8"	88 sq. ft	No
30	Bedroom	11'10" x 13'0"	125 sq. ft	Yes
31	Bath	5'4" x 5'0"	27 sq. ft	Yes
32	Media Room	19'2" x 17'5"	305 sq. ft	Yes
33	Hall	13'11" x 7'1"	117 sq. ft	Yes
34	Bath	8'2" x 5'10"	45 sq. ft	Yes
35	Bedroom	10'1" x 13'0"	126 sq. ft	Yes
36	Office	16'11" x 8'1"	130 sq. ft	Yes
37	Bath	8'7" x 4'9"	41 sq. ft	Yes
38	Bedroom	12'10" x 15'1"	175 sq. ft	Yes

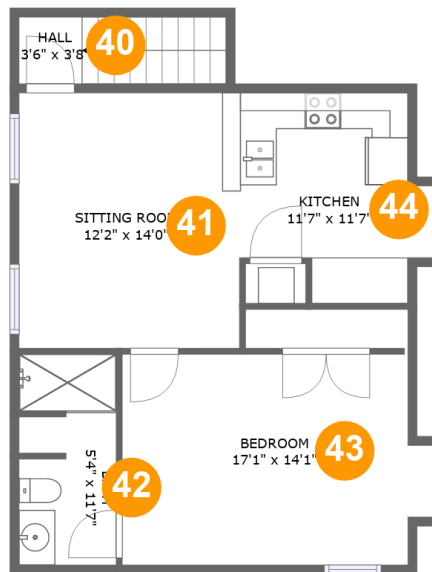
Scan captured on Wed, 12 Jun 2024 15:16:02 GMT

Information is calculated by CubiCasa technology; deemed highly reliable but not guaranteed.

**667 Richmond Close, East Lake, Tarpon Springs,  
Pinellas County, Florida, United States, 34688**

#	Room name	Dimensions	Area (sqft)	Counted as Living Area
39	Open To Below	26'9" x 26'6"	548 sq. ft	No

# 667 Richmond Close, East Lake, Tarpon Springs, Pinellas County, Florida, United States, 34688



## Room Dimensions

Floor 3

Total sqft: 669

Living area: 669

#	Room name	Dimensions	Area (sqft)	Counted as Living Area
40	Hall	3'6" x 3'8"	42 sq. ft	Yes
41	Sitting Room	12'2" x 14'0"	165 sq. ft	Yes
42	Bath	5'4" x 11'7"	60 sq. ft	Yes
43	Bedroom	17'1" x 14'1"	207 sq. ft	Yes
44	Kitchen	11'7" x 11'7"	107 sq. ft	Yes

# 667 Richmond Close, East Lake, Tarpon Springs, Pinellas County, Florida, United States, 34688

## 1 Floor 1 - Kitchen



Dimensions: 26'9" x 16'4"  
Area: 363 sq. ft  
Counted as Living Area:  
Yes

Heated: Yes  
Finished: Yes  
Enclosed: Yes  
Contiguous:  
Yes  
Permitted: Yes  
Wet Space: No  
Addition: No  
Conversion: No

## 2 Floor 1 - W.i.c.



Dimensions: 5'4" x 5'6"  
Area: 30 sq. ft  
Counted as Living Area:  
Yes

Heated: Yes  
Finished: Yes  
Enclosed: Yes  
Contiguous:  
Yes  
Permitted: Yes  
Wet Space: No  
Addition: No  
Conversion: No

# 667 Richmond Close, East Lake, Tarpon Springs, Pinellas County, Florida, United States, 34688

## 3 Floor 1 - Screened Porch



Dimensions: 37'6" x 31'0"  
Area: 1049 sq. ft  
Counted as Living Area: No

Heated: No  
Finished: Yes  
Enclosed: No  
Contiguous: Yes  
Permitted: Yes  
Wet Space: No  
Addition: No  
Conversion: No

## 4 Floor 1 - Pantry



Dimensions: 2'5" x 7'11"  
Area: 19 sq. ft  
Counted as Living Area:  
Yes

Heated: Yes  
Finished: Yes  
Enclosed: Yes  
Contiguous:  
Yes  
Permitted: Yes  
Wet Space: No  
Addition: No  
Conversion: No

## 5 Floor 1 - Foyer



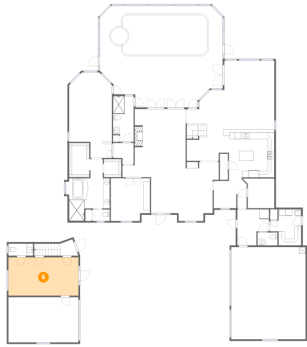
Dimensions: 17'2" x 14'8"  
Area: 155 sq. ft  
Counted as Living Area:  
Yes

Heated: Yes  
Finished: Yes  
Enclosed: Yes  
Contiguous:  
Yes  
Permitted: Yes  
Wet Space: No  
Addition: No  
Conversion: No



# 667 Richmond Close, East Lake, Tarpon Springs, Pinellas County, Florida, United States, 34688

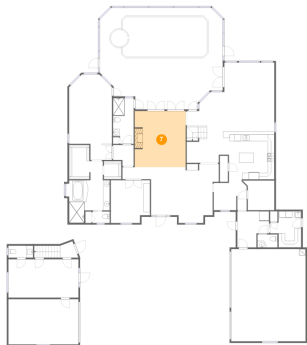
## 6 Floor 1 - Room



Dimensions: 21'5" x 11'8"  
Area: 250 sq. ft  
Counted as Living Area:  
Yes

Heated: Yes  
Finished: Yes  
Enclosed: Yes  
Contiguous:  
Yes  
Permitted: Yes  
Wet Space: No  
Addition: No  
Conversion: No

## 7 Floor 1 - Living Room



Dimensions: 15'7" x 17'2"  
Area: 265 sq. ft  
Counted as Living Area:  
Yes

Heated: Yes  
Finished: Yes  
Enclosed: Yes  
Contiguous:  
Yes  
Permitted: Yes  
Wet Space: No  
Addition: No  
Conversion: No

## 8 Floor 1 - Primary Bedroom



Dimensions: 13'1" x 26'1"  
Area: 295 sq. ft  
Counted as Living Area:  
Yes

Heated: Yes  
Finished: Yes  
Enclosed: Yes  
Contiguous:  
Yes  
Permitted: Yes  
Wet Space: No  
Addition: No  
Conversion: No

# 667 Richmond Close, East Lake, Tarpon Springs, Pinellas County, Florida, United States, 34688

## 9 Floor 1 - Breakfast Nook



Dimensions: 11'6" x 10'4"  
Area: 90 sq. ft  
Counted as Living Area:  
Yes

Heated: Yes  
Finished: Yes  
Enclosed: Yes  
Contiguous:  
Yes  
Permitted: Yes  
Wet Space: No  
Addition: No  
Conversion: No

## 10 Floor 1 - Bath



Dimensions: 6'4" x 14'0"  
Area: 83 sq. ft  
Counted as Living Area:  
Yes

Heated: Yes  
Finished: Yes  
Enclosed: Yes  
Contiguous:  
Yes  
Permitted: Yes  
Wet Space: Yes  
Addition: No  
Conversion: No

## 11 Floor 1 - Wc

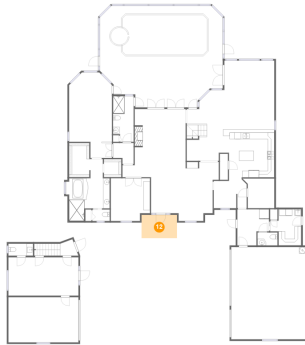


Dimensions: 5'3" x 3'6"  
Area: 18 sq. ft  
Counted as Living Area:  
Yes

Heated: Yes  
Finished: Yes  
Enclosed: Yes  
Contiguous:  
Yes  
Permitted: Yes  
Wet Space: Yes  
Addition: No  
Conversion: No

# 667 Richmond Close, East Lake, Tarpon Springs, Pinellas County, Florida, United States, 34688

## 12 Floor 1 - Porch



Dimensions: 10'10" x 7'1"  
Area: 77 sq. ft  
Counted as Living Area: No

Heated: No  
Finished: Yes  
Enclosed: No  
Contiguous: Yes  
Permitted: Yes  
Wet Space: No  
Addition: No  
Conversion: No

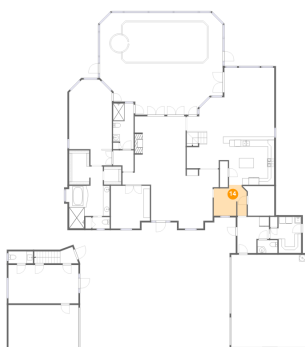
## 13 Floor 1 - Hall



Dimensions: 9'8" x 11'0"  
Area: 90 sq. ft  
Counted as Living Area:  
Yes

Heated: Yes  
Finished: Yes  
Enclosed: Yes  
Contiguous:  
Yes  
Permitted: Yes  
Wet Space: No  
Addition: No  
Conversion: No

## 14 Floor 1 - Office



Dimensions: 10'0" x 9'5"  
Area: 86 sq. ft  
Counted as Living Area:  
Yes

Heated: Yes  
Finished: Yes  
Enclosed: Yes  
Contiguous:  
Yes  
Permitted: Yes  
Wet Space: No  
Addition: No  
Conversion: No

# 667 Richmond Close, East Lake, Tarpon Springs, Pinellas County, Florida, United States, 34688

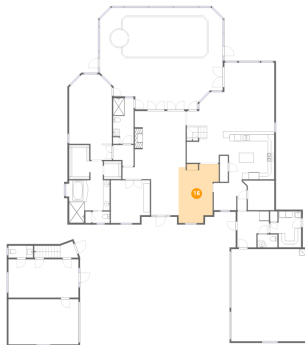
## 15 Floor 1 - Laundry



Dimensions: 9'6" x 11'0"  
Area: 85 sq. ft  
Counted as Living Area:  
Yes

Heated: Yes  
Finished: Yes  
Enclosed: Yes  
Contiguous:  
Yes  
Permitted: Yes  
Wet Space: No  
Addition: No  
Conversion: No

## 16 Floor 1 - Dining Area



Dimensions: 12'3" x 18'0"  
Area: 187 sq. ft  
Counted as Living Area:  
Yes

Heated: Yes  
Finished: Yes  
Enclosed: Yes  
Contiguous:  
Yes  
Permitted: Yes  
Wet Space: No  
Addition: No  
Conversion: No

## 17 Floor 1 - Wc



Dimensions: 7'6" x 3'8"  
Area: 28 sq. ft  
Counted as Living Area:  
Yes

Heated: Yes  
Finished: Yes  
Enclosed: Yes  
Contiguous:  
Yes  
Permitted: Yes  
Wet Space: Yes  
Addition: No  
Conversion: No

**667 Richmond Close, East Lake, Tarpon Springs,  
Pinellas County, Florida, United States, 34688****18 Floor 1 - Wine Cellar**

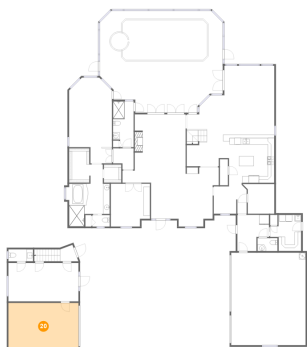
Dimensions: 8'1" x 9'1"  
Area: 75 sq. ft  
Counted as Living Area: No

Heated: No  
Finished: No  
Enclosed: Yes  
Contiguous: Yes  
Permitted: Yes  
Wet Space: No  
Addition: No  
Conversion: No

**19 Floor 1 - W.i.c.**

Dimensions: 6'6" x 10'5"  
Area: 66 sq. ft  
Counted as Living Area:  
Yes

Heated: Yes  
Finished: Yes  
Enclosed: Yes  
Contiguous:  
Yes  
Permitted: Yes  
Wet Space: No  
Addition: No  
Conversion: No

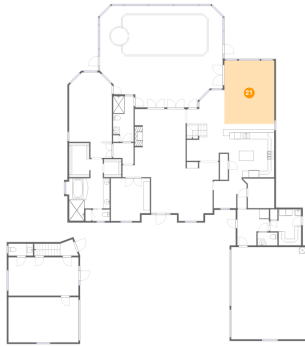
**20 Floor 1 - Garage**

Dimensions: 21'5" x 13'9"  
Area: 295 sq. ft  
Counted as Living Area: No

Heated: No  
Finished: No  
Enclosed: Yes  
Contiguous: Yes  
Permitted: Yes  
Wet Space: No  
Addition: No  
Conversion: No

# 667 Richmond Close, East Lake, Tarpon Springs, Pinellas County, Florida, United States, 34688

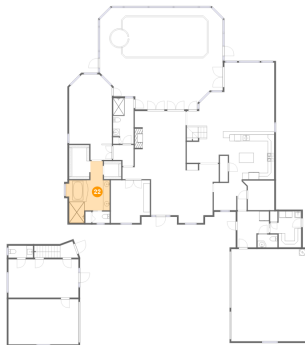
## 21 Floor 1 - Family Room



Dimensions: 15'3" x 19'4"  
Area: 294 sq. ft  
Counted as Living Area:  
Yes

Heated: Yes  
Finished: Yes  
Enclosed: Yes  
Contiguous:  
Yes  
Permitted: Yes  
Wet Space: No  
Addition: No  
Conversion: No

## 22 Floor 1 - Primary Bath



Dimensions: 13'5" x 15'1"  
Area: 158 sq. ft  
Counted as Living Area:  
Yes

Heated: Yes  
Finished: Yes  
Enclosed: Yes  
Contiguous:  
Yes  
Permitted: Yes  
Wet Space: Yes  
Addition: No  
Conversion: No

## 23 Floor 1 - Hall

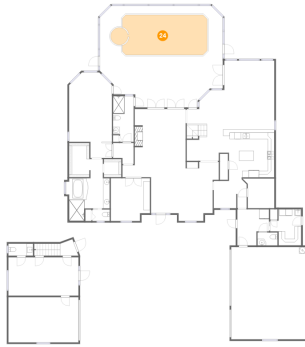


Dimensions: 6'4" x 6'5"  
Area: 35 sq. ft  
Counted as Living Area:  
Yes

Heated: Yes  
Finished: Yes  
Enclosed: Yes  
Contiguous:  
Yes  
Permitted: Yes  
Wet Space: No  
Addition: No  
Conversion: No

# 667 Richmond Close, East Lake, Tarpon Springs, Pinellas County, Florida, United States, 34688

## 24 Floor 1 - Swimming Pool



Dimensions: 29'5" x 12'2"  
Area: 327 sq. ft  
Counted as Living Area: No

Heated: No  
Finished: No  
Enclosed: No  
Contiguous: Yes  
Permitted: No  
Wet Space: No  
Addition: No  
Conversion: No

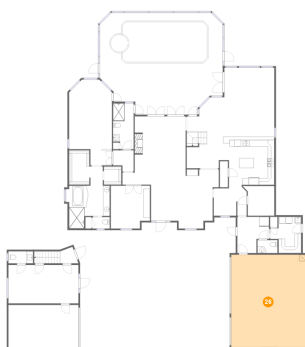
## 25 Floor 1 - Wc



Dimensions: 6'1" x 3'11"  
Area: 24 sq. ft  
Counted as Living Area:  
Yes

Heated: Yes  
Finished: Yes  
Enclosed: Yes  
Contiguous:  
Yes  
Permitted: Yes  
Wet Space: Yes  
Addition: No  
Conversion: No

## 26 Floor 1 - Garage



Dimensions: 22'9" x 28'2"  
Area: 639 sq. ft  
Counted as Living Area: No

Heated: No  
Finished: No  
Enclosed: Yes  
Contiguous: Yes  
Permitted: Yes  
Wet Space: No  
Addition: No  
Conversion: No

# 667 Richmond Close, East Lake, Tarpon Springs, Pinellas County, Florida, United States, 34688

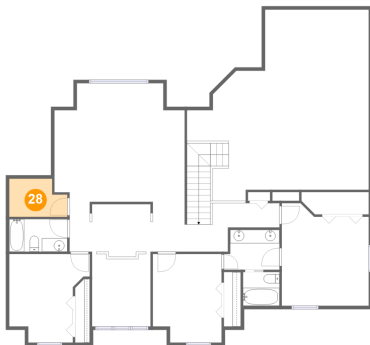
## 27 Floor 1 - Office



Dimensions: 11'11" x 13'0"  
Area: 148 sq. ft  
Counted as Living Area:  
Yes

Heated: Yes  
Finished: Yes  
Enclosed: Yes  
Contiguous:  
Yes  
Permitted: Yes  
Wet Space: No  
Addition: No  
Conversion: No

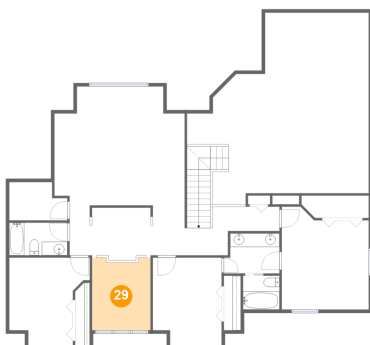
## 28 Floor 2 - Room



Dimensions: 8'7" x 5'7"  
Area: 43 sq. ft  
Counted as Living Area:  
Yes

Heated: Yes  
Finished: Yes  
Enclosed: Yes  
Contiguous:  
Yes  
Permitted: Yes  
Wet Space: No  
Addition: No  
Conversion: No

## 29 Floor 2 - Open To Below



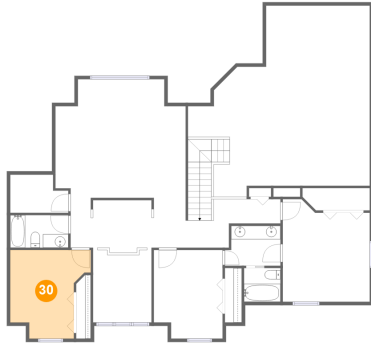
Dimensions: 8'7" x 10'8"  
Area: 88 sq. ft  
Counted as Living Area: No

Heated: No  
Finished: No  
Enclosed: No  
Contiguous: Yes  
Permitted: No  
Wet Space: No  
Addition: No  
Conversion: No



# 667 Richmond Close, East Lake, Tarpon Springs, Pinellas County, Florida, United States, 34688

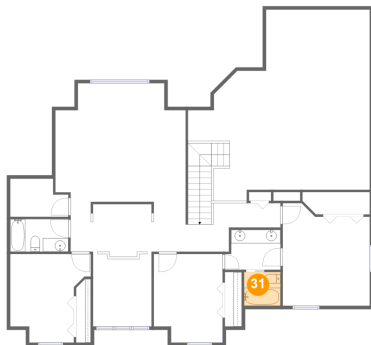
## 30 Floor 2 - Bedroom



Dimensions: 11'10" x 13'0"  
Area: 125 sq. ft  
Counted as Living Area:  
Yes

Heated: Yes  
Finished: Yes  
Enclosed: Yes  
Contiguous:  
Yes  
Permitted: Yes  
Wet Space: No  
Addition: No  
Conversion: No

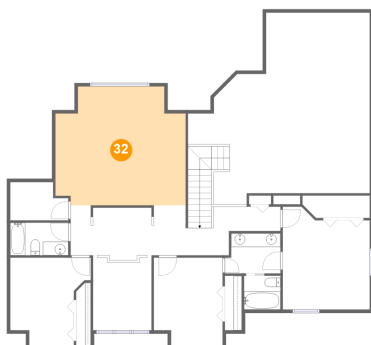
## 31 Floor 2 - Bath



Dimensions: 5'4" x 5'0"  
Area: 27 sq. ft  
Counted as Living Area:  
Yes

Heated: Yes  
Finished: Yes  
Enclosed: Yes  
Contiguous:  
Yes  
Permitted: Yes  
Wet Space: Yes  
Addition: No  
Conversion: No

## 32 Floor 2 - Media Room

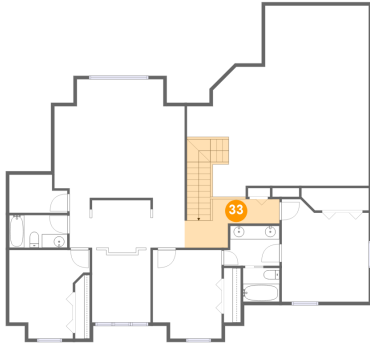


Dimensions: 19'2" x 17'5"  
Area: 305 sq. ft  
Counted as Living Area:  
Yes

Heated: Yes  
Finished: Yes  
Enclosed: Yes  
Contiguous:  
Yes  
Permitted: Yes  
Wet Space: No  
Addition: No  
Conversion: No

# 667 Richmond Close, East Lake, Tarpon Springs, Pinellas County, Florida, United States, 34688

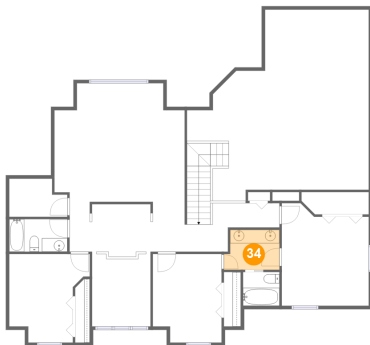
## 33 Floor 2 - Hall



Dimensions: 13'11" x 7'1"  
Area: 117 sq. ft  
Counted as Living Area:  
Yes

Heated: Yes  
Finished: Yes  
Enclosed: Yes  
Contiguous:  
Yes  
Permitted: Yes  
Wet Space: No  
Addition: No  
Conversion: No

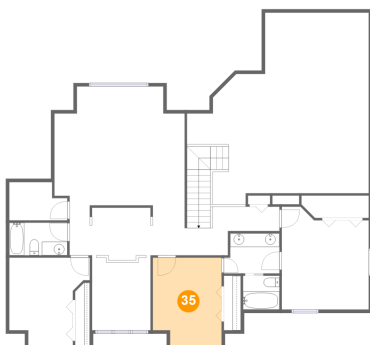
## 34 Floor 2 - Bath



Dimensions: 8'2" x 5'10"  
Area: 45 sq. ft  
Counted as Living Area:  
Yes

Heated: Yes  
Finished: Yes  
Enclosed: Yes  
Contiguous:  
Yes  
Permitted: Yes  
Wet Space: Yes  
Addition: No  
Conversion: No

## 35 Floor 2 - Bedroom

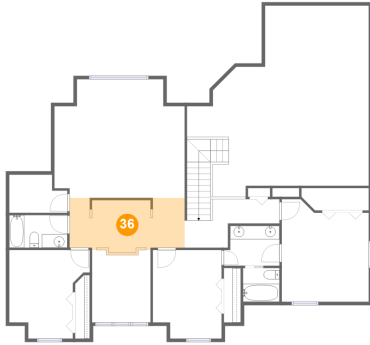


Dimensions: 10'1" x 13'0"  
Area: 126 sq. ft  
Counted as Living Area:  
Yes

Heated: Yes  
Finished: Yes  
Enclosed: Yes  
Contiguous:  
Yes  
Permitted: Yes  
Wet Space: No  
Addition: No  
Conversion: No

# 667 Richmond Close, East Lake, Tarpon Springs, Pinellas County, Florida, United States, 34688

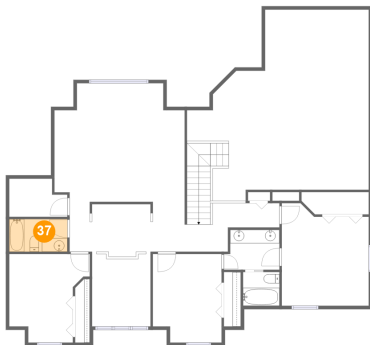
## 36 Floor 2 - Office



Dimensions: 16'11" x 8'1"  
Area: 130 sq. ft  
Counted as Living Area:  
Yes

Heated: Yes  
Finished: Yes  
Enclosed: Yes  
Contiguous:  
Yes  
Permitted: Yes  
Wet Space: No  
Addition: No  
Conversion: No

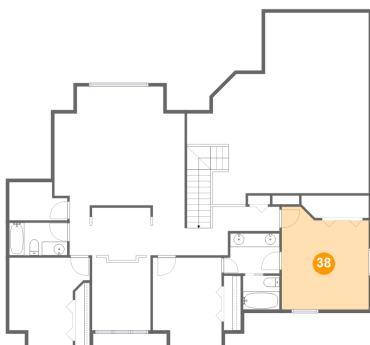
## 37 Floor 2 - Bath



Dimensions: 8'7" x 4'9"  
Area: 41 sq. ft  
Counted as Living Area:  
Yes

Heated: Yes  
Finished: Yes  
Enclosed: Yes  
Contiguous:  
Yes  
Permitted: Yes  
Wet Space: Yes  
Addition: No  
Conversion: No

## 38 Floor 2 - Bedroom

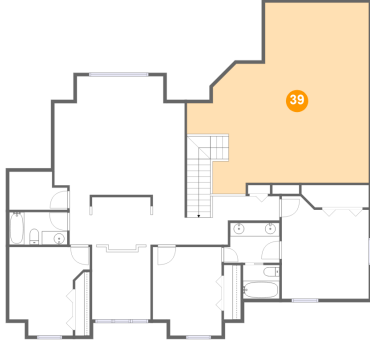


Dimensions: 12'10" x 15'1"  
Area: 175 sq. ft  
Counted as Living Area:  
Yes

Heated: Yes  
Finished: Yes  
Enclosed: Yes  
Contiguous:  
Yes  
Permitted: Yes  
Wet Space: No  
Addition: No  
Conversion: No

# 667 Richmond Close, East Lake, Tarpon Springs, Pinellas County, Florida, United States, 34688

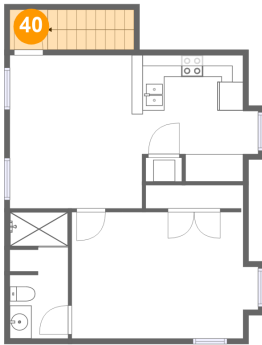
## 39 Floor 2 - Open To Below



Dimensions: 26'9" x 26'6"  
Area: 548 sq. ft  
Counted as Living Area: No

Heated: No  
Finished: No  
Enclosed: No  
Contiguous: Yes  
Permitted: No  
Wet Space: No  
Addition: No  
Conversion: No

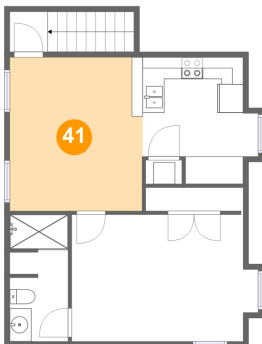
## 40 Floor 3 - Hall



Dimensions: 3'6" x 3'8"  
Area: 42 sq. ft  
Counted as Living Area: Yes

Heated: Yes  
Finished: Yes  
Enclosed: Yes  
Contiguous: Yes  
Permitted: Yes  
Wet Space: No  
Addition: No  
Conversion: No

## 41 Floor 3 - Sitting Room

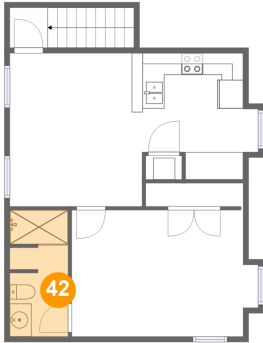


Dimensions: 12'2" x 14'0"  
Area: 165 sq. ft  
Counted as Living Area: Yes

Heated: Yes  
Finished: Yes  
Enclosed: Yes  
Contiguous: Yes  
Permitted: Yes  
Wet Space: No  
Addition: No  
Conversion: No

# 667 Richmond Close, East Lake, Tarpon Springs, Pinellas County, Florida, United States, 34688

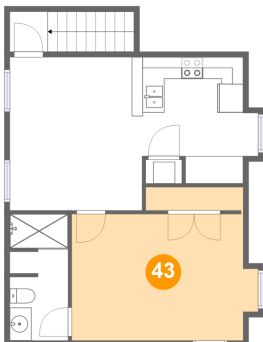
## 42 Floor 3 - Bath



Dimensions: 5'4" x 11'7"  
Area: 60 sq. ft  
Counted as Living Area:  
Yes

Heated: Yes  
Finished: Yes  
Enclosed: Yes  
Contiguous:  
Yes  
Permitted: Yes  
Wet Space: Yes  
Addition: No  
Conversion: No

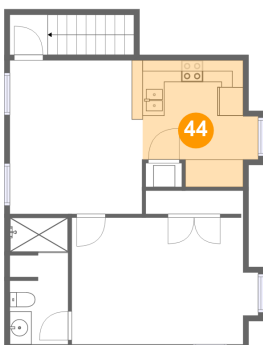
## 43 Floor 3 - Bedroom



Dimensions: 17'1" x 14'1"  
Area: 207 sq. ft  
Counted as Living Area:  
Yes

Heated: Yes  
Finished: Yes  
Enclosed: Yes  
Contiguous:  
Yes  
Permitted: Yes  
Wet Space: No  
Addition: No  
Conversion: No

## 44 Floor 3 - Kitchen



Dimensions: 11'7" x 11'7"  
Area: 107 sq. ft  
Counted as Living Area:  
Yes

Heated: Yes  
Finished: Yes  
Enclosed: Yes  
Contiguous:  
Yes  
Permitted: Yes  
Wet Space: No  
Addition: No  
Conversion: No