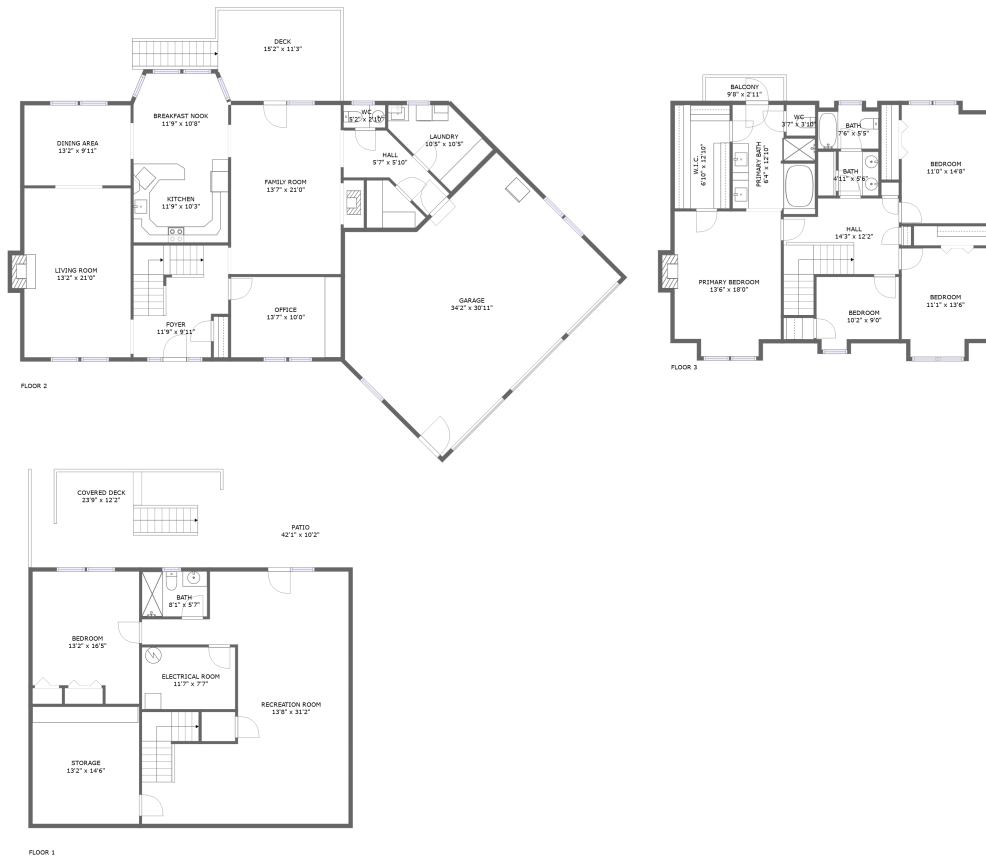






# 1900 Azalea Lane, Pocatello, Bannock County, Idaho, United States, 83204

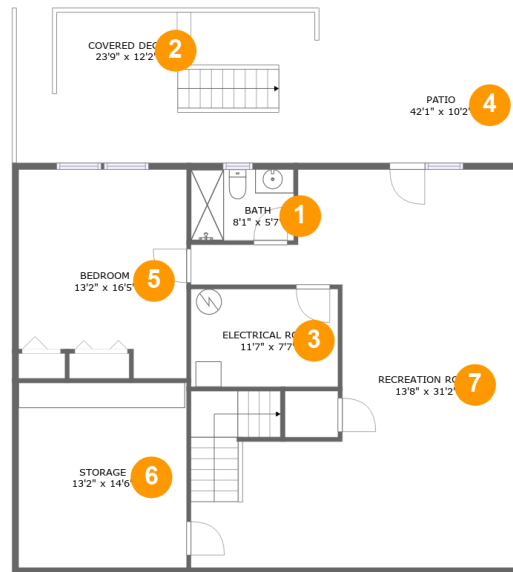


## Property Summary

 **1** garages
  **5** bedrooms
  **3** bathrooms
  **1** half baths

 **3** floors
  **3,756** Gross Living Area sqft
  **5,579** total sqft

# 1900 Azalea Lane, Pocatello, Bannock County, Idaho, United States, 83204



## Room Dimensions

Floor 1

Total sqft: 1777

Living area: 951

#	Room name	Dimensions	Area (sqft)	Counted as Living Area
1	Bath	8'1" x 5'7"	45 sq. ft	No
2	Covered Deck	23'9" x 12'2"	231 sq. ft	No
3	Electrical Room	11'7" x 7'7"	89 sq. ft	No
4	Patio	42'1" x 10'2"	251 sq. ft	No
5	Bedroom	13'2" x 16'5"	196 sq. ft	Yes
6	Storage	13'2" x 14'6"	192 sq. ft	No
7	Recreation Room	13'8" x 31'2"	631 sq. ft	Yes

# 1900 Azalea Lane, Pocatello, Bannock County, Idaho, United States, 83204



## Room Dimensions

Floor 2

Total sqft: 2526

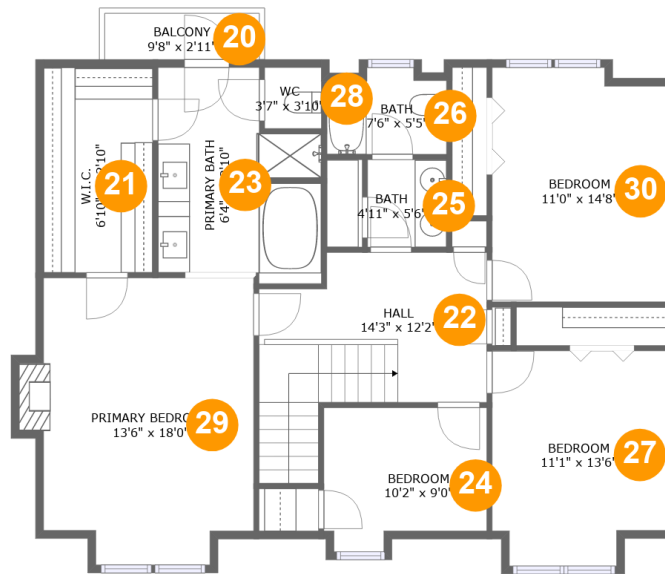
Living area: 1565

#	Room name	Dimensions	Area (sqft)	Counted as Living Area
8	Dining Area	13'2" x 9'11"	131 sq. ft	Yes
9	Hall	5'7" x 5'10"	66 sq. ft	Yes
10	Kitchen	11'9" x 10'3"	121 sq. ft	Yes
11	Laundry	10'5" x 10'5"	81 sq. ft	Yes
12	Living Room	13'2" x 21'0"	283 sq. ft	Yes
13	Garage	34'2" x 30'11"	716 sq. ft	No
14	Family Room	13'7" x 21'0"	285 sq. ft	Yes
15	Wc	5'2" x 2'10"	15 sq. ft	Yes
16	Foyer	11'9" x 9'11"	151 sq. ft	Yes
17	Breakfast Nook	11'9" x 10'8"	119 sq. ft	Yes
18	Deck	15'2" x 11'3"	201 sq. ft	No

**1900 Azalea Lane, Pocatello, Bannock County,  
Idaho, United States, 83204**

#	Room name	Dimensions	Area (sqft)	Counted as Living Area
19	Office	13'7" x 10'0"	136 sq. ft	Yes

# 1900 Azalea Lane, Pocatello, Bannock County, Idaho, United States, 83204



## Room Dimensions

Floor 3

Total sqft: 1276

Living area: 1240

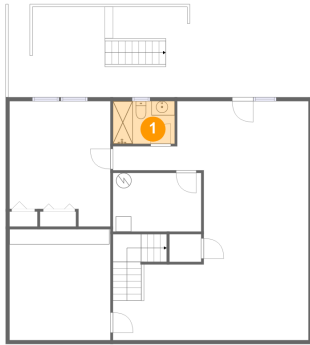
#	Room name	Dimensions	Area (sqft)	Counted as Living Area
20	Balcony	9'8" x 2'11"	28 sq. ft	No
21	W.i.c.	6'10" x 12'10"	88 sq. ft	Yes
22	Hall	14'3" x 12'2"	143 sq. ft	Yes
23	Primary Bath	6'4" x 12'10"	117 sq. ft	Yes
24	Bedroom	10'2" x 9'0"	83 sq. ft	Yes
25	Bath	4'11" x 5'6"	27 sq. ft	Yes
26	Bath	7'6" x 5'5"	37 sq. ft	Yes
27	Bedroom	11'1" x 13'6"	140 sq. ft	Yes
28	Wc	3'7" x 3'10"	14 sq. ft	Yes
29	Primary Bedroom	13'6" x 18'0"	230 sq. ft	Yes
30	Bedroom	11'0" x 14'8"	158 sq. ft	Yes

Scan captured on Wed, 04 Sep 2024 19:03:04 GMT

Information is calculated by CubiCasa technology; deemed highly reliable but not guaranteed.

# 1900 Azalea Lane, Pocatello, Bannock County, Idaho, United States, 83204

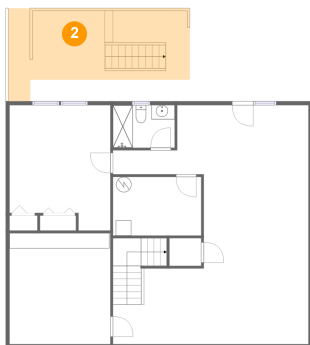
## 1 Floor 1 - Bath



Dimensions: 8'1" x 5'7"  
Area: 45 sq. ft  
Counted as Living Area: No

Heated: Yes  
Finished: Yes  
Enclosed: Yes  
Contiguous: Yes  
Permitted: Yes  
Wet Space: Yes  
Addition: No  
Conversion: No

## 2 Floor 1 - Covered Deck

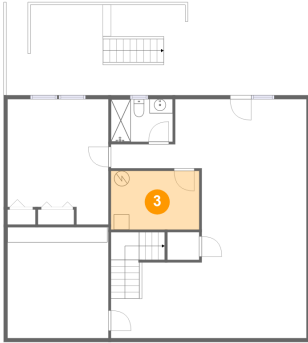


Dimensions: 23'9" x 12'2"  
Area: 231 sq. ft  
Counted as Living Area: No

Heated: No  
Finished: Yes  
Enclosed: No  
Contiguous: Yes  
Permitted: Yes  
Wet Space: No  
Addition: No  
Conversion: No

# 1900 Azalea Lane, Pocatello, Bannock County, Idaho, United States, 83204

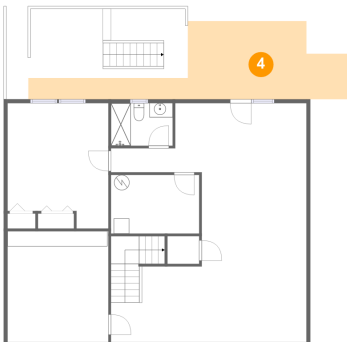
## 3 Floor 1 - Electrical Room



Dimensions: 11'7" x 7'7"  
Area: 89 sq. ft  
Counted as Living Area: No

Heated: No  
Finished: No  
Enclosed: Yes  
Contiguous: Yes  
Permitted: Yes  
Wet Space: No  
Addition: No  
Conversion: No

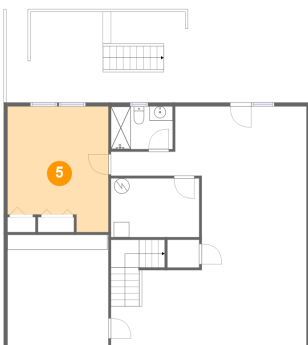
## 4 Floor 1 - Patio



Dimensions: 42'1" x 10'2"  
Area: 251 sq. ft  
Counted as Living Area: No

Heated: No  
Finished: Yes  
Enclosed: No  
Contiguous: Yes  
Permitted: Yes  
Wet Space: No  
Addition: No  
Conversion: No

## 5 Floor 1 - Bedroom

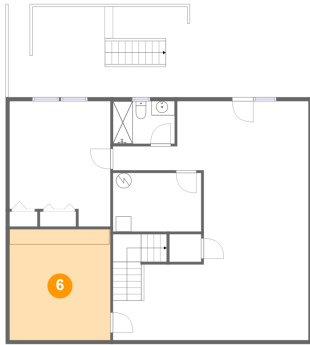


Dimensions: 13'2" x 16'5"  
Area: 196 sq. ft  
Counted as Living Area: Yes

Heated: Yes  
Finished: Yes  
Enclosed: Yes  
Contiguous: Yes  
Permitted: Yes  
Wet Space: No  
Addition: No  
Conversion: No

# 1900 Azalea Lane, Pocatello, Bannock County, Idaho, United States, 83204

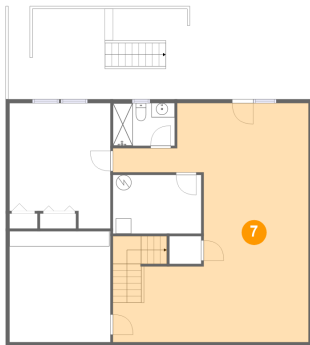
## 6 Floor 1 - Storage



Dimensions: 13'2" x 14'6"  
Area: 192 sq. ft  
Counted as Living Area: No

Heated: No  
Finished: No  
Enclosed: No  
Contiguous: Yes  
Permitted: Yes  
Wet Space: No  
Addition: No  
Conversion: No

## 7 Floor 1 - Recreation Room



Dimensions: 13'8" x 31'2"  
Area: 631 sq. ft  
Counted as Living Area: Yes

Heated: Yes  
Finished: Yes  
Enclosed: Yes  
Contiguous: Yes  
Permitted: Yes  
Wet Space: No  
Addition: No  
Conversion: No

## 8 Floor 2 - Dining Area



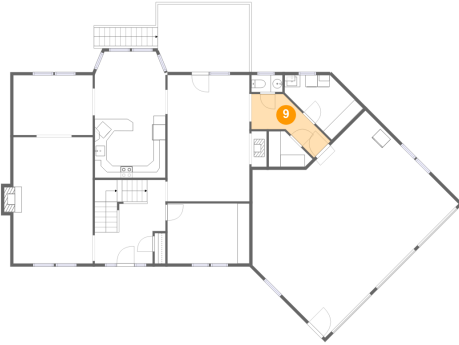
Dimensions: 13'2" x 9'11"  
Area: 131 sq. ft  
Counted as Living Area: Yes

Heated: Yes  
Finished: Yes  
Enclosed: Yes  
Contiguous: Yes  
Permitted: Yes  
Wet Space: No  
Addition: No  
Conversion: No



# 1900 Azalea Lane, Pocatello, Bannock County, Idaho, United States, 83204

## 9 Floor 2 - Hall



Dimensions: 5'7" x 5'10"  
Area: 66 sq. ft  
Counted as Living Area:  
Yes

Heated: Yes  
Finished: Yes  
Enclosed: Yes  
Contiguous:  
Yes  
Permitted: Yes  
Wet Space: No  
Addition: No  
Conversion: No

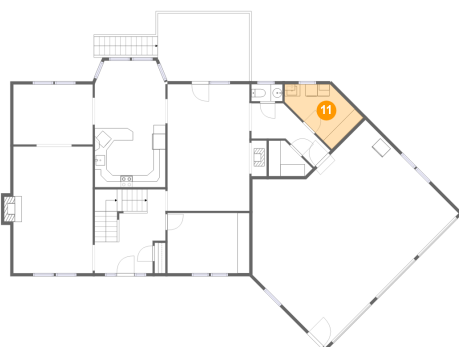
## 10 Floor 2 - Kitchen



Dimensions: 11'9" x 10'3"  
Area: 121 sq. ft  
Counted as Living Area:  
Yes

Heated: Yes  
Finished: Yes  
Enclosed: Yes  
Contiguous:  
Yes  
Permitted: Yes  
Wet Space: No  
Addition: No  
Conversion: No

## 11 Floor 2 - Laundry

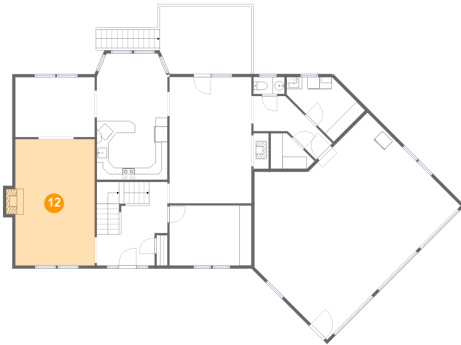


Dimensions: 10'5" x 10'5"  
Area: 81 sq. ft  
Counted as Living Area:  
Yes

Heated: Yes  
Finished: Yes  
Enclosed: Yes  
Contiguous:  
Yes  
Permitted: Yes  
Wet Space: No  
Addition: No  
Conversion: No

# 1900 Azalea Lane, Pocatello, Bannock County, Idaho, United States, 83204

## 12 Floor 2 - Living Room



Dimensions: 13'2" x 21'0"  
Area: 283 sq. ft  
Counted as Living Area:  
Yes

Heated: Yes  
Finished: Yes  
Enclosed: Yes  
Contiguous:  
Yes  
Permitted: Yes  
Wet Space: No  
Addition: No  
Conversion: No

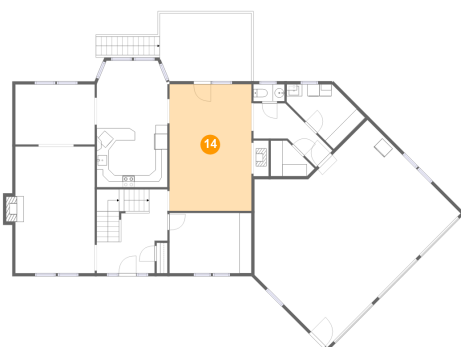
## 13 Floor 2 - Garage



Dimensions: 34'2" x 30'11"  
Area: 716 sq. ft  
Counted as Living Area: No

Heated: No  
Finished: No  
Enclosed: Yes  
Contiguous: Yes  
Permitted: Yes  
Wet Space: No  
Addition: No  
Conversion: No

## 14 Floor 2 - Family Room



Dimensions: 13'7" x 21'0"  
Area: 285 sq. ft  
Counted as Living Area:  
Yes

Heated: Yes  
Finished: Yes  
Enclosed: Yes  
Contiguous:  
Yes  
Permitted: Yes  
Wet Space: No  
Addition: No  
Conversion: No

# 1900 Azalea Lane, Pocatello, Bannock County, Idaho, United States, 83204

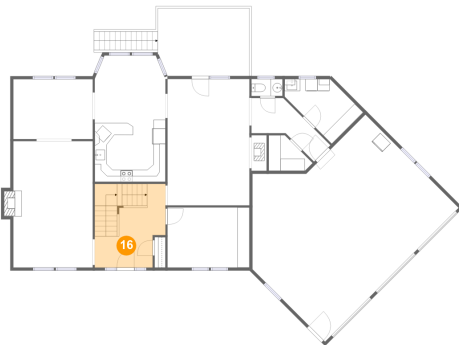
## 15 Floor 2 - Wc



Dimensions: 5'2" x 2'10"  
Area: 15 sq. ft  
Counted as Living Area:  
Yes

Heated: Yes  
Finished: Yes  
Enclosed: Yes  
Contiguous:  
Yes  
Permitted: Yes  
Wet Space: Yes  
Addition: No  
Conversion: No

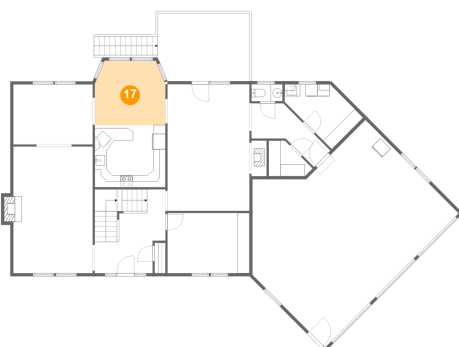
## 16 Floor 2 - Foyer



Dimensions: 11'9" x 9'11"  
Area: 151 sq. ft  
Counted as Living Area:  
Yes

Heated: Yes  
Finished: Yes  
Enclosed: Yes  
Contiguous:  
Yes  
Permitted: Yes  
Wet Space: No  
Addition: No  
Conversion: No

## 17 Floor 2 - Breakfast Nook

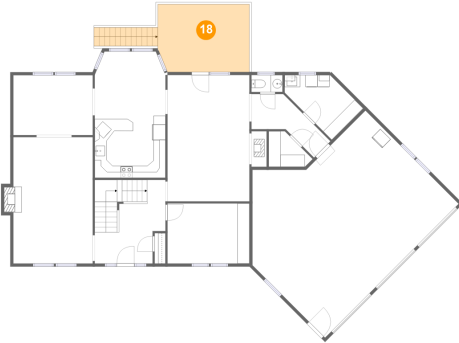


Dimensions: 11'9" x 10'8"  
Area: 119 sq. ft  
Counted as Living Area:  
Yes

Heated: Yes  
Finished: Yes  
Enclosed: Yes  
Contiguous:  
Yes  
Permitted: Yes  
Wet Space: No  
Addition: No  
Conversion: No

# 1900 Azalea Lane, Pocatello, Bannock County, Idaho, United States, 83204

## 18 Floor 2 - Deck



Dimensions: 15'2" x 11'3"  
Area: 201 sq. ft  
Counted as Living Area: No

Heated: No  
Finished: Yes  
Enclosed: No  
Contiguous: Yes  
Permitted: Yes  
Wet Space: No  
Addition: No  
Conversion: No

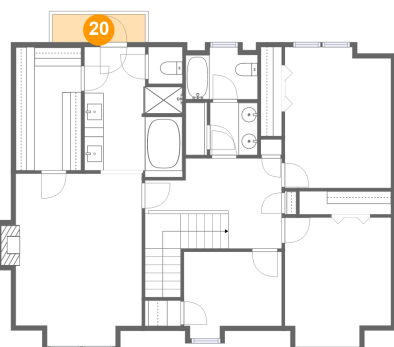
## 19 Floor 2 - Office



Dimensions: 13'7" x 10'0"  
Area: 136 sq. ft  
Counted as Living Area: Yes

Heated: Yes  
Finished: Yes  
Enclosed: Yes  
Contiguous: Yes  
Permitted: Yes  
Wet Space: No  
Addition: No  
Conversion: No

## 20 Floor 3 - Balcony

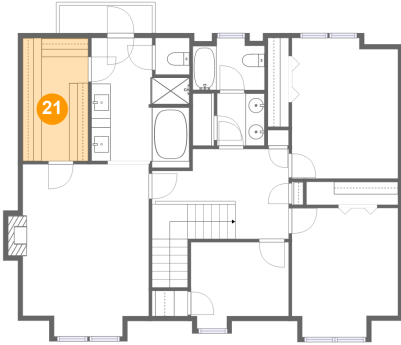


Dimensions: 9'8" x 2'11"  
Area: 28 sq. ft  
Counted as Living Area: No

Heated: No  
Finished: Yes  
Enclosed: No  
Contiguous: Yes  
Permitted: Yes  
Wet Space: No  
Addition: No  
Conversion: No

# 1900 Azalea Lane, Pocatello, Bannock County, Idaho, United States, 83204

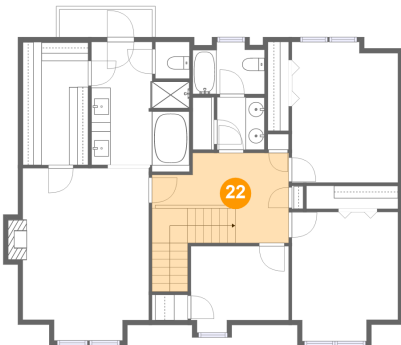
## 21 Floor 3 - W.i.c.



Dimensions: 6'10" x 12'10"  
Area: 88 sq. ft  
Counted as Living Area:  
Yes

Heated: Yes  
Finished: Yes  
Enclosed: Yes  
Contiguous:  
Yes  
Permitted: Yes  
Wet Space: No  
Addition: No  
Conversion: No

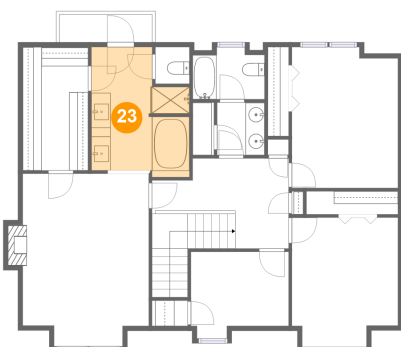
## 22 Floor 3 - Hall



Dimensions: 14'3" x 12'2"  
Area: 143 sq. ft  
Counted as Living Area:  
Yes

Heated: Yes  
Finished: Yes  
Enclosed: Yes  
Contiguous:  
Yes  
Permitted: Yes  
Wet Space: No  
Addition: No  
Conversion: No

## 23 Floor 3 - Primary Bath

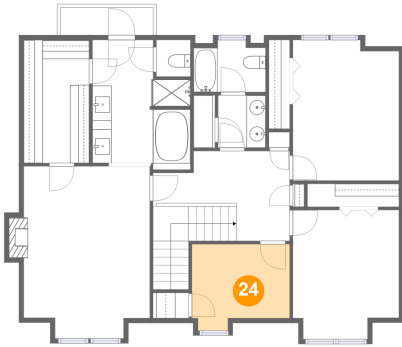


Dimensions: 6'4" x 12'10"  
Area: 117 sq. ft  
Counted as Living Area:  
Yes

Heated: Yes  
Finished: Yes  
Enclosed: Yes  
Contiguous:  
Yes  
Permitted: Yes  
Wet Space: Yes  
Addition: No  
Conversion: No

# 1900 Azalea Lane, Pocatello, Bannock County, Idaho, United States, 83204

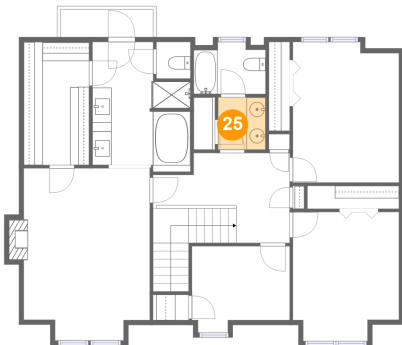
## 24 Floor 3 - Bedroom



Dimensions: 10'2" x 9'0"  
Area: 83 sq. ft  
Counted as Living Area:  
Yes

Heated: Yes  
Finished: Yes  
Enclosed: Yes  
Contiguous:  
Yes  
Permitted: Yes  
Wet Space: No  
Addition: No  
Conversion: No

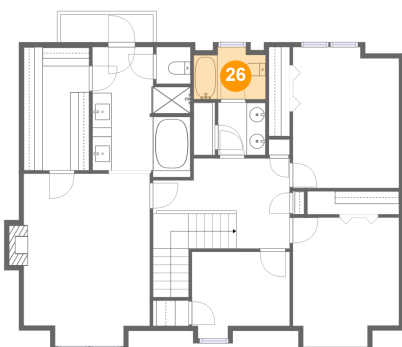
## 25 Floor 3 - Bath



Dimensions: 4'11" x 5'6"  
Area: 27 sq. ft  
Counted as Living Area:  
Yes

Heated: Yes  
Finished: Yes  
Enclosed: Yes  
Contiguous:  
Yes  
Permitted: Yes  
Wet Space: Yes  
Addition: No  
Conversion: No

## 26 Floor 3 - Bath

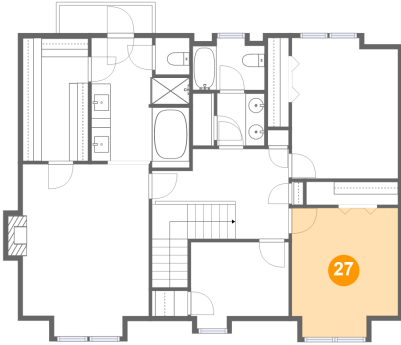


Dimensions: 7'6" x 5'5"  
Area: 37 sq. ft  
Counted as Living Area:  
Yes

Heated: Yes  
Finished: Yes  
Enclosed: Yes  
Contiguous:  
Yes  
Permitted: Yes  
Wet Space: Yes  
Addition: No  
Conversion: No

# 1900 Azalea Lane, Pocatello, Bannock County, Idaho, United States, 83204

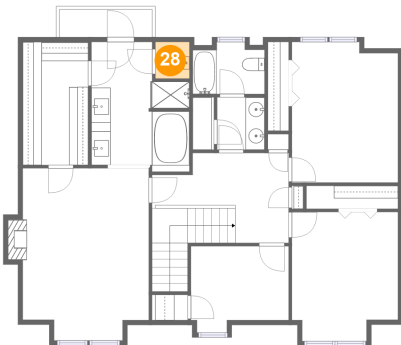
## 27 Floor 3 - Bedroom



Dimensions: 11'1" x 13'6"  
Area: 140 sq. ft  
Counted as Living Area:  
Yes

Heated: Yes  
Finished: Yes  
Enclosed: Yes  
Contiguous:  
Yes  
Permitted: Yes  
Wet Space: No  
Addition: No  
Conversion: No

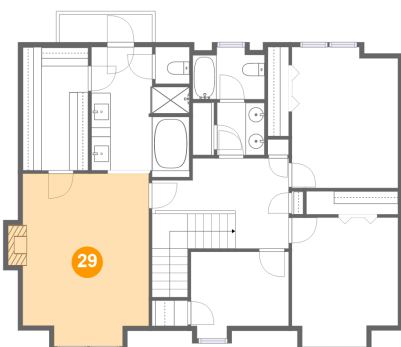
## 28 Floor 3 - Wc



Dimensions: 3'7" x 3'10"  
Area: 14 sq. ft  
Counted as Living Area:  
Yes

Heated: Yes  
Finished: Yes  
Enclosed: Yes  
Contiguous:  
Yes  
Permitted: Yes  
Wet Space: Yes  
Addition: No  
Conversion: No

## 29 Floor 3 - Primary Bedroom

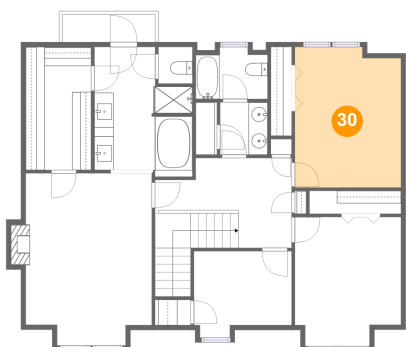


Dimensions: 13'6" x 18'0"  
Area: 230 sq. ft  
Counted as Living Area:  
Yes

Heated: Yes  
Finished: Yes  
Enclosed: Yes  
Contiguous:  
Yes  
Permitted: Yes  
Wet Space: No  
Addition: No  
Conversion: No

# 1900 Azalea Lane, Pocatello, Bannock County, Idaho, United States, 83204

## 30 Floor 3 - Bedroom



**Dimensions:** 11'0" x 14'8"  
**Area:** 158 sq. ft  
**Counted as Living Area:**  
Yes

**Heated:** Yes  
**Finished:** Yes  
**Enclosed:** Yes  
**Contiguous:**  
Yes  
**Permitted:** Yes  
**Wet Space:** No  
**Addition:** No  
**Conversion:** No