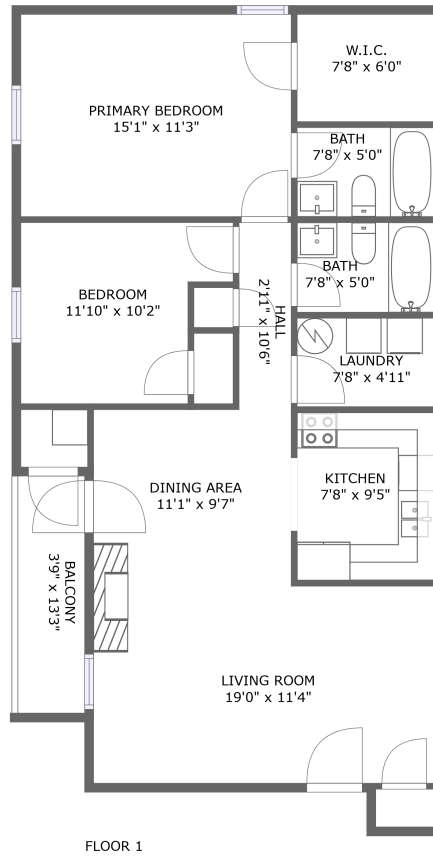



3624 Timberline Trail, Cave Spring, Roanoke, Roanoke County, Virginia, United States, 24018



Property summary

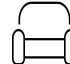
 **0** Garages


 **2** Bedrooms

 **2** Bathrooms

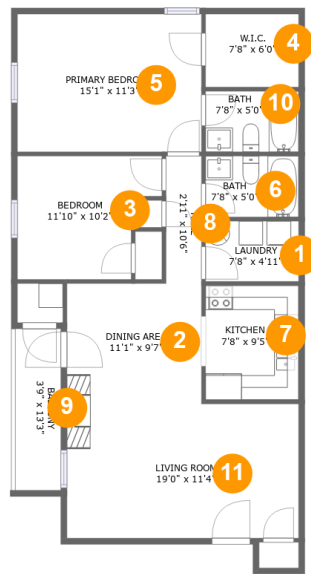
 **0** Half baths

 **1** Floors

 **916** Gross living area sqft

 **978** Total sqft

3624 Timberline Trail, Cave Spring, Roanoke, Roanoke County, Virginia, United States, 24018



Room dimensions

Floor 1

Total sqft: 978 Living area: 916

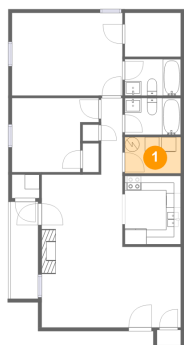
#		Dimensions	sqft	Counted as living area
1	Utility	7'8" x 4'11"	38 sq. ft	Yes
2	Dining Room	11'1" x 9'7"	105 sq. ft	Yes
3	Bedroom	11'10" x 10'2"	103 sq. ft	Yes
4	Cl	7'8" x 6'0"	46 sq. ft	Yes
5	Bedroom	15'1" x 11'3"	171 sq. ft	Yes
6	Bath	7'8" x 5'0"	38 sq. ft	Yes
7	Kitchen	7'8" x 9'5"	72 sq. ft	Yes
8	Hall	2'11" x 10'6"	31 sq. ft	Yes
9	Outdoor	3'9" x 13'3"	50 sq. ft	No
10	Bath	7'8" x 5'0"	38 sq. ft	Yes
11	Living Room	19'0" x 11'4"	213 sq. ft	Yes

Scan captured on Mon, 23 Dec 2024 17:33:04 GMT

Information is calculated by Cubicasa technology deemed highly reliable but not guaranteed.

3624 Timberline Trail, Cave Spring, Roanoke, Roanoke County, Virginia, United States, 24018

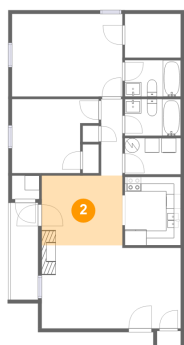
1 Floor 1 - Utility



Dimensions: 7'8" x 4'11"
Area: 38 sq. ft
Counted as living area: Yes

Heated: Yes
Finished: Yes
Enclosed: Yes
Contiguous: Yes
Permitted: Yes
Wet space: No
Addition: No
Conversion: No

2 Floor 1 - Dining Room

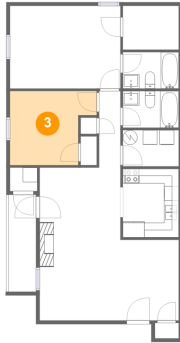


Dimensions: 11'1" x 9'7"
Area: 105 sq. ft
Counted as living area: Yes

Heated: Yes
Finished: Yes
Enclosed: Yes
Contiguous: Yes
Permitted: Yes
Wet space: No
Addition: No
Conversion: No

3624 Timberline Trail, Cave Spring, Roanoke, Roanoke County, Virginia, United States, 24018

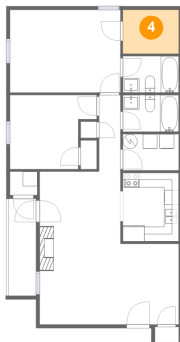
3 Floor 1 - Bedroom



Dimensions: 11'10" x 10'2"
Area: 103 sq. ft
Counted as living area: Yes

Heated: Yes
Finished: Yes
Enclosed: Yes
Contiguous: Yes
Permitted: Yes
Wet space: No
Addition: No
Conversion: No

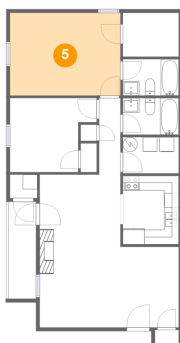
4 Floor 1 - Cl



Dimensions: 7'8" x 6'0"
Area: 46 sq. ft
Counted as living area: Yes

Heated: Yes
Finished: Yes
Enclosed: Yes
Contiguous: Yes
Permitted: Yes
Wet space: No
Addition: No
Conversion: No

5 Floor 1 - Bedroom

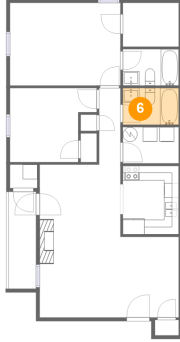


Dimensions: 15'1" x 11'3"
Area: 171 sq. ft
Counted as living area: Yes

Heated: Yes
Finished: Yes
Enclosed: Yes
Contiguous: Yes
Permitted: Yes
Wet space: No
Addition: No
Conversion: No

3624 Timberline Trail, Cave Spring, Roanoke, Roanoke County, Virginia, United States, 24018

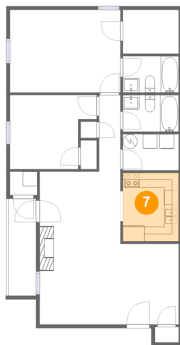
6 Floor 1 - Bath



Dimensions: 7'8" x 5'0"
Area: 38 sq. ft
Counted as living area: Yes

Heated: Yes
Finished: Yes
Enclosed: Yes
Contiguous: Yes
Permitted: Yes
Wet space: Yes
Addition: No
Conversion: No

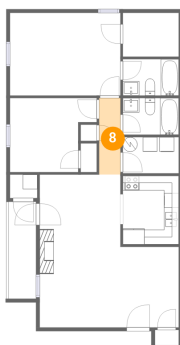
7 Floor 1 - Kitchen



Dimensions: 7'8" x 9'5"
Area: 72 sq. ft
Counted as living area: Yes

Heated: Yes
Finished: Yes
Enclosed: Yes
Contiguous: Yes
Permitted: Yes
Wet space: No
Addition: No
Conversion: No

8 Floor 1 - Hall

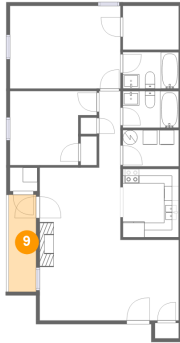


Dimensions: 2'11" x 10'6"
Area: 31 sq. ft
Counted as living area: Yes

Heated: Yes
Finished: Yes
Enclosed: Yes
Contiguous: Yes
Permitted: Yes
Wet space: No
Addition: No
Conversion: No

3624 Timberline Trail, Cave Spring, Roanoke, Roanoke County, Virginia, United States, 24018

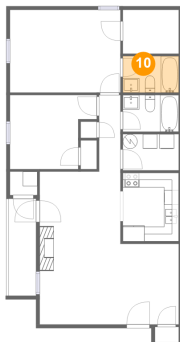
9 Floor 1 - Outdoor



Dimensions: 3'9" x 13'3"
Area: 50 sq. ft
Counted as living area: No

Heated: No
Finished: Yes
Enclosed: No
Contiguous: Yes
Permitted: Yes
Wet space: No
Addition: No
Conversion: No

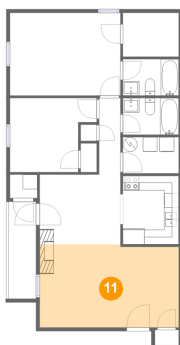
10 Floor 1 - Bath



Dimensions: 7'8" x 5'0"
Area: 38 sq. ft
Counted as living area: Yes

Heated: Yes
Finished: Yes
Enclosed: Yes
Contiguous: Yes
Permitted: Yes
Wet space: Yes
Addition: No
Conversion: No

11 Floor 1 - Living Room



Dimensions: 19'0" x 11'4"
Area: 213 sq. ft
Counted as living area: Yes

Heated: Yes
Finished: Yes
Enclosed: Yes
Contiguous: Yes
Permitted: Yes
Wet space: No
Addition: No
Conversion: No