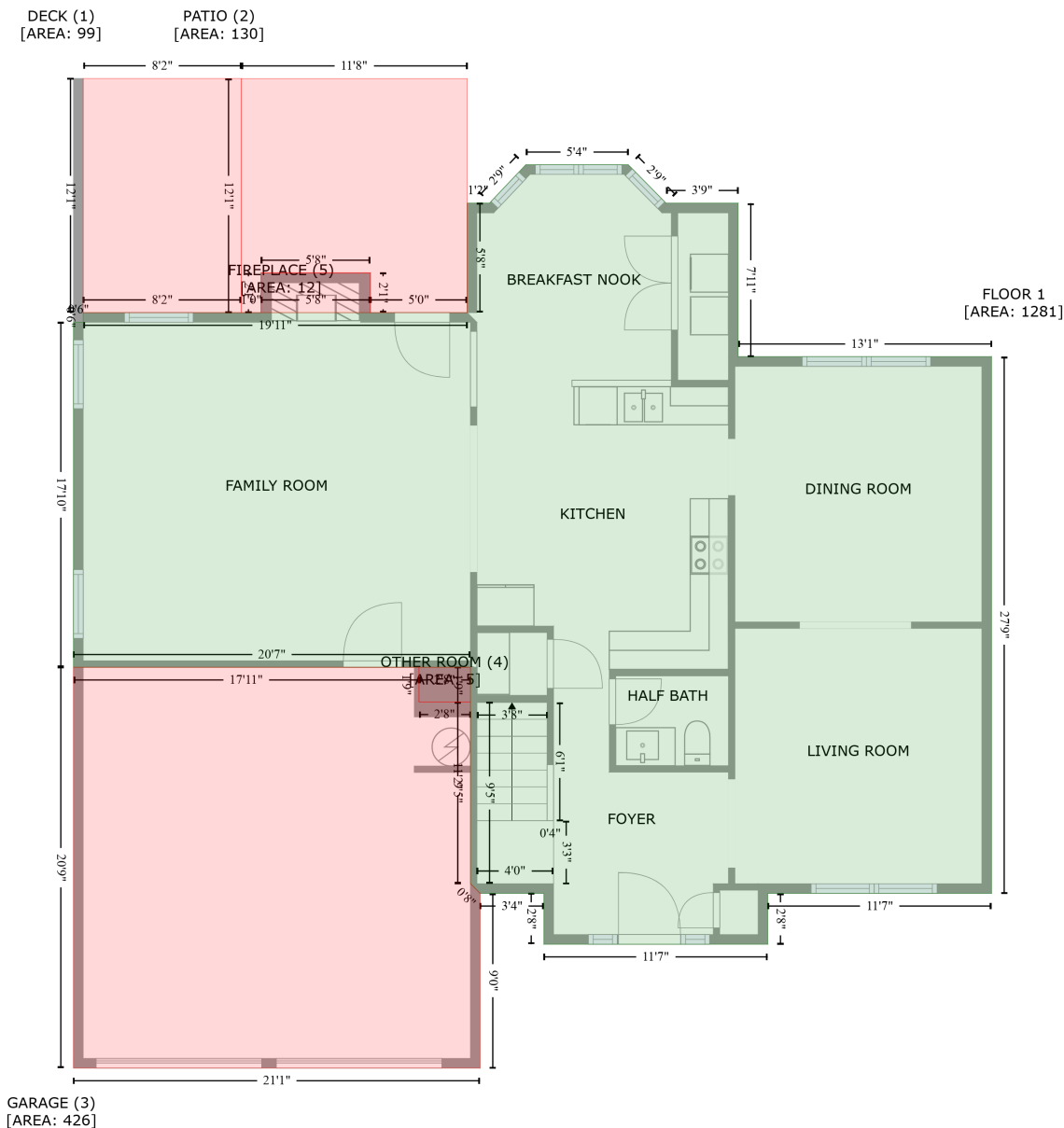


# 928 Avent Meadows Lane, Holly Springs, Wake County, North Carolina, United States, 27540

Gross Living Area: 2744 sq. ft



Space	Area (sq. ft)	Calculation
FLOOR 1 (Living area)	1281	Coordinate Polygon Area Algorithm using inches $-((406.3 + 429.8) * (88.6 - 112.5) + (429.8 + 474.5) * (112.5 - 112.5) + (474.5 + 474.5) * (112.5 - 207.7) + (474.5 + 631.9) * (207.7 - 207.7) + (631.9 + 631.9) * (207.7 - 541) + (631.9 + 493) * (541 - 541) + (493 + 493) * (541 - 572.5) + (493 + 353.9) * (572.5 - 572.5) + (353.9 + 353.9) * (572.5 - 541) + (353.9 + 314.2) * (541 - 541) + (314.2 + 308.2) * (541 - 535) + (308.2 + 308.2) * (535 - 400.6) + (308.2 + 61.7) * (400.6 - 400.6) + (61.7 + 61.7) * (400.6 - 186.4) + (61.7 + 67.7) * (186.4 - 186.4) + (67.7 + 67.7) * (186.4 - 180.4) + (67.7 + 306.2) * (180.4 - 180.4) + (306.2 + 306.2) * (180.4 - 112.5) + (306.2 + 320.1) * (112.5 - 112.5) + (320.1 + 342.6) * (112.5 - 88.6) +$

# 928 Avent Meadows Lane, Holly Springs, Wake County, North Carolina, United States, 27540

Gross Living Area: 2744 sq. ft

Space	Area (sq. ft)	Calculation <small>Coordinate Polygon Area Algorithm using inches</small>
		$(342.6 + 406.3) * (88.6 - 88.6) * 0.5 * 0.00694$
DECK (Non-living area)	99	$-((165.8 + 165.8) * (35 - 180.4) + (165.8 + 67.7) * (180.4 - 180.4) + (67.7 + 67.7) * (180.4 - 35) + (67.7 + 165.8) * (35 - 35)) * 0.5 * 0.00694$
PATIO (Non-living area)	130	$-((306.2 + 306.2) * (35.1 - 180.4) + (306.2 + 246.1) * (180.4 - 180.4) + (246.1 + 246.1) * (180.4 - 155.8) + (246.1 + 178.2) * (155.8 - 155.8) + (178.2 + 178.2) * (155.8 - 180.4) + (178.2 + 165.9) * (180.4 - 180.4) + (165.9 + 165.9) * (180.4 - 35.1) + (165.9 + 306.2) * (35.1 - 35.1)) * 0.5 * 0.00694$
GARAGE (Non-living area)	426	$-((276.3 + 276.3) * (400.6 - 422.1) + (276.3 + 308.2) * (422.1 - 422.1) + (308.2 + 308.2) * (422.1 - 535) + (308.2 + 314.2) * (535 - 541) + (314.2 + 314.2) * (541 - 649.4) + (314.2 + 61.7) * (649.4 - 649.4) + (61.7 + 61.7) * (649.4 - 400.6) + (61.7 + 276.3) * (400.6 - 400.6)) * 0.5 * 0.00694$
OTHER ROOM (Non-living area)	5	$-((308.2 + 308.2) * (400.6 - 422.1) + (308.2 + 276.3) * (422.1 - 422.1) + (276.3 + 276.3) * (422.1 - 400.6) + (276.3 + 308.2) * (400.6 - 400.6)) * 0.5 * 0.00694$
FIREPLACE (Non-living area)	12	$-((246.1 + 246.1) * (155.8 - 180.4) + (246.1 + 178.2) * (180.4 - 180.4) + (178.2 + 178.2) * (180.4 - 155.8) + (178.2 + 246.1) * (155.8 - 155.8)) * 0.5 * 0.00694$

# 928 Avent Meadows Lane, Holly Springs, Wake County, North Carolina, United States, 27540

Gross Living Area: 2744 sq. ft



Space	Area (sq. ft)	Calculation <small>Coordinate Polygon Area Algorithm using inches</small>
FLOOR 2 (Living area)	1463	$  \begin{aligned}  & -((474.5 + 474.5) * (112.5 - 179.1) + (474.5 + 631.9) * (179.1 - 179.1) + (631.9 + 631.9) * (179.1 - 541) \\  & + (631.9 + 493) * (541 - 541) + (493 + 493) * (541 - 572.5) + (493 + 353.9) * (572.5 - 572.5) \\  & + (353.9 + 353.9) * (572.5 - 541) + (353.9 + 314.2) * (541 - 541) + (314.2 + 314.2) * (541 - 555.8) \\  & + (314.2 + 230.1) * (555.8 - 555.8) + (230.1 + 230.1) * (555.8 - 634.3) + (230.1 + 140.9) * (634.3 - 634.3) \\  & + (140.9 + 140.9) * (634.3 - 555.8) + (140.9 + 61.7) * (555.8 - 555.8) + (61.7 + 61.7) * (555.8 - 269.1) \\  & + (61.7 + 306.2) * (269.1 - 269.1) + (306.2 + 306.2) * (269.1 - 112.5) + (306.2 + 474.5) * (112.5 - 112.5)) * 0.5 * 0.00694  \end{aligned}  $