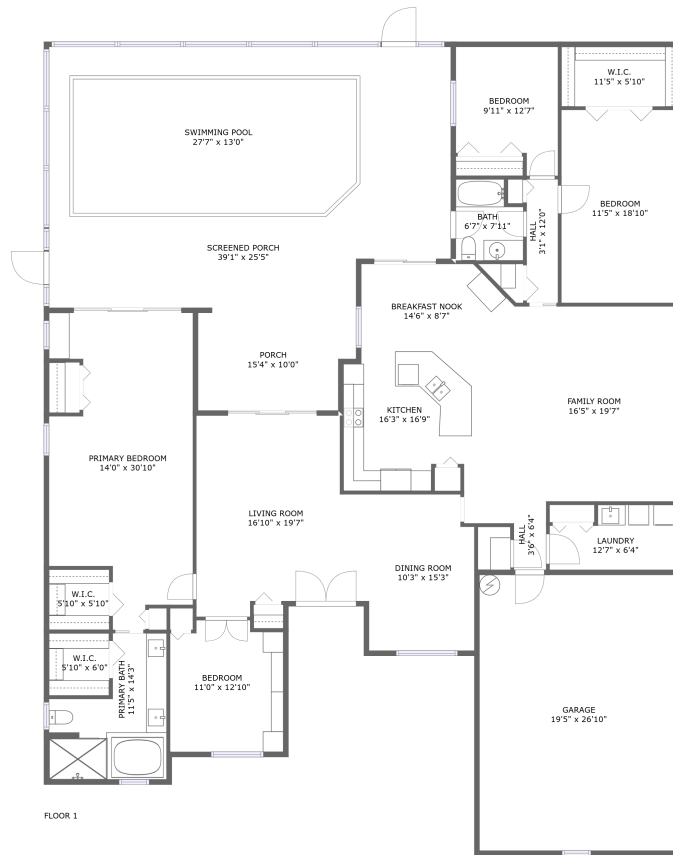



137 Woodcreek Drive East, Weatherstone, Safety Harbor, Pinellas County, Florida, United States, 34695



Property summary

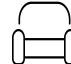
 **1** Garages

 **4** Bedrooms

 **2** Bathrooms

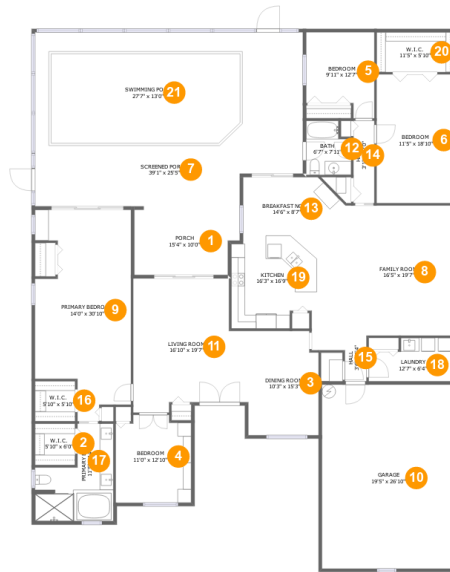
 **0** Half baths

 **1** Floors

 **2,673** Gross living area sqft

 **3,997** Total sqft

137 Woodcreek Drive East, Weatherstone, Safety Harbor, Pinellas County, Florida, United States, 34695



Room dimensions

Floor 1

Total sqft: 3997 Living area: 2673

#		Dimensions	sqft	Counted as living area
1	Porch	15'4" x 10'0"	145 sq. ft	No
2	W.I.C.	5'10" x 6'0"	36 sq. ft	Yes
3	Dining Room	10'3" x 15'3"	152 sq. ft	Yes
4	Bedroom	11'0" x 12'10"	134 sq. ft	Yes
5	Bedroom	9'11" x 12'7"	109 sq. ft	Yes
6	Bedroom	11'5" x 18'10"	215 sq. ft	Yes
7	Screened Porch	39'1" x 25'5"	949 sq. ft	No
8	Family Room	16'5" x 19'7"	312 sq. ft	Yes
9	Primary Bedroom	14'0" x 30'10"	364 sq. ft	Yes
10	Garage	19'5" x 26'10"	520 sq. ft	No
11	Living Room	16'10" x 19'7"	290 sq. ft	Yes

Scan captured on Thu, 27 Mar 2025 20:08:41 GMT

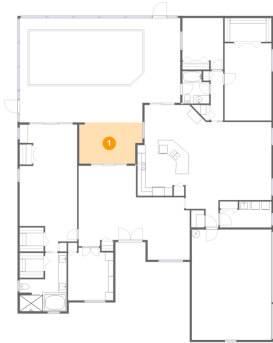
Information is calculated by Cubicasa technology deemed highly reliable but not guaranteed.

137 Woodcreek Drive East, Weatherstone, Safety Harbor, Pinellas County, Florida, United States, 34695

#		Dimensions	sqft	Counted as living area
12	Bath	6'7" x 7'11"	47 sq. ft	Yes
13	Breakfast Nook	14'6" x 8'7"	117 sq. ft	Yes
14	Hall	3'1" x 12'0"	37 sq. ft	Yes
15	Hall	3'6" x 6'4"	20 sq. ft	Yes
16	W.I.C.	5'10" x 5'10"	34 sq. ft	Yes
17	Primary Bath	11'5" x 14'3"	122 sq. ft	Yes
18	Laundry	12'7" x 6'4"	70 sq. ft	Yes
19	Kitchen	16'3" x 16'9"	224 sq. ft	Yes
20	W.I.C.	11'5" x 5'10"	66 sq. ft	Yes
21	Swimming Pool	27'7" x 13'0"	355 sq. ft	No

137 Woodcreek Drive East, Weatherstone, Safety Harbor, Pinellas County, Florida, United States, 34695

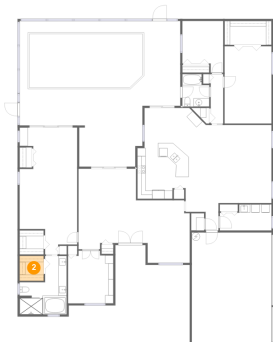
1 Floor 1 - Porch



Dimensions: 15'4" x 10'0"
Area: 145 sq. ft
Counted as living area: No

Heated: No
Finished: Yes
Enclosed: No
Contiguous: Yes
Permitted: Yes
Wet space: No
Addition: No
Conversion: No

2 Floor 1 - W.I.C.

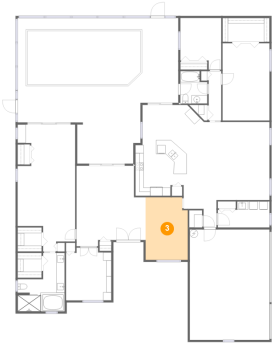


Dimensions: 5'10" x 6'0"
Area: 36 sq. ft
Counted as living area: Yes

Heated: Yes
Finished: Yes
Enclosed: Yes
Contiguous: Yes
Permitted: Yes
Wet space: No
Addition: No
Conversion: No

137 Woodcreek Drive East, Weatherstone, Safety Harbor, Pinellas County, Florida, United States, 34695

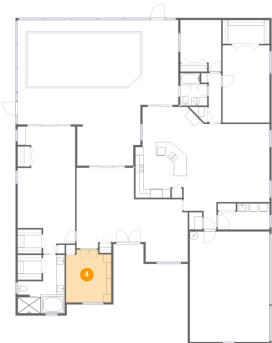
3 Floor 1 - Dining Room



Dimensions: 10'3" x 15'3"
Area: 152 sq. ft
Counted as living area: Yes

Heated: Yes
Finished: Yes
Enclosed: Yes
Contiguous: Yes
Permitted: Yes
Wet space: No
Addition: No
Conversion: No

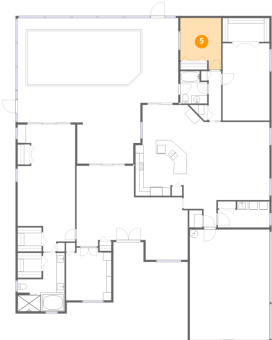
4 Floor 1 - Bedroom



Dimensions: 11'0" x 12'10"
Area: 134 sq. ft
Counted as living area: Yes

Heated: Yes
Finished: Yes
Enclosed: Yes
Contiguous: Yes
Permitted: Yes
Wet space: No
Addition: No
Conversion: No

5 Floor 1 - Bedroom

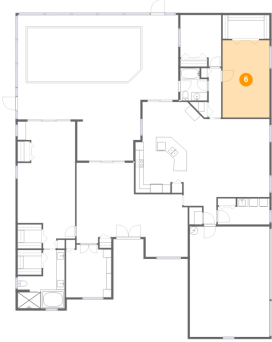


Dimensions: 9'11" x 12'7"
Area: 109 sq. ft
Counted as living area: Yes

Heated: Yes
Finished: Yes
Enclosed: Yes
Contiguous: Yes
Permitted: Yes
Wet space: No
Addition: No
Conversion: No

137 Woodcreek Drive East, Weatherstone, Safety Harbor, Pinellas County, Florida, United States, 34695

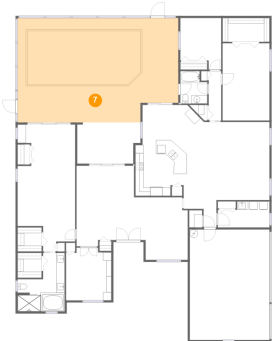
6 Floor 1 - Bedroom



Dimensions: 11'5" x 18'10"
Area: 215 sq. ft
Counted as living area: Yes

Heated: Yes
Finished: Yes
Enclosed: Yes
Contiguous: Yes
Permitted: Yes
Wet space: No
Addition: No
Conversion: No

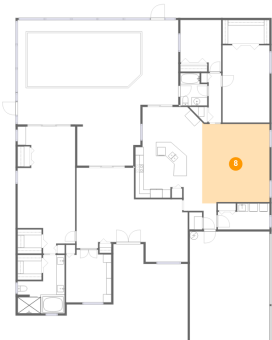
7 Floor 1 - Screened Porch



Dimensions: 39'1" x 25'5"
Area: 949 sq. ft
Counted as living area: No

Heated: No
Finished: Yes
Enclosed: No
Contiguous: Yes
Permitted: Yes
Wet space: No
Addition: No
Conversion: No

8 Floor 1 - Family Room

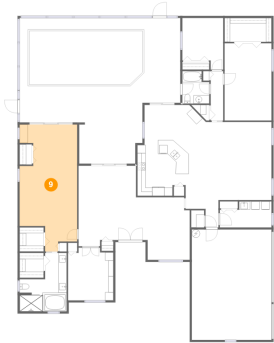


Dimensions: 16'5" x 19'7"
Area: 312 sq. ft
Counted as living area: Yes

Heated: Yes
Finished: Yes
Enclosed: Yes
Contiguous: Yes
Permitted: Yes
Wet space: No
Addition: No
Conversion: No

137 Woodcreek Drive East, Weatherstone, Safety Harbor, Pinellas County, Florida, United States, 34695

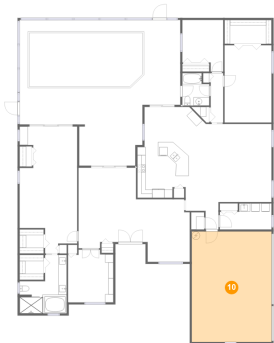
9 Floor 1 - Primary Bedroom



Dimensions: 14'0" x 30'10"
Area: 364 sq. ft
Counted as living area: Yes

Heated: Yes
Finished: Yes
Enclosed: Yes
Contiguous: Yes
Permitted: Yes
Wet space: No
Addition: No
Conversion: No

10 Floor 1 - Garage



Dimensions: 19'5" x 26'10"
Area: 520 sq. ft
Counted as living area: No

Heated: No
Finished: No
Enclosed: Yes
Contiguous: Yes
Permitted: Yes
Wet space: No
Addition: No
Conversion: No

11 Floor 1 - Living Room

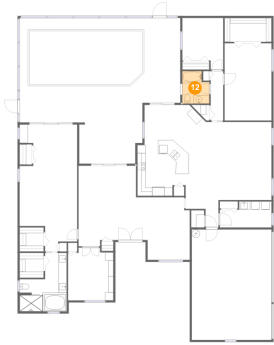


Dimensions: 16'10" x 19'7"
Area: 290 sq. ft
Counted as living area: Yes

Heated: Yes
Finished: Yes
Enclosed: Yes
Contiguous: Yes
Permitted: Yes
Wet space: No
Addition: No
Conversion: No

137 Woodcreek Drive East, Weatherstone, Safety Harbor, Pinellas County, Florida, United States, 34695

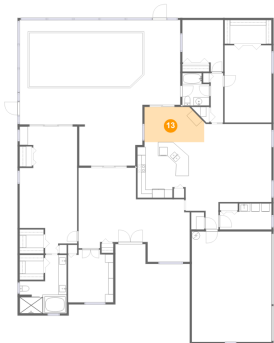
12 Floor 1 - Bath



Dimensions: 6'7" x 7'11"
Area: 47 sq. ft
Counted as living area: Yes

Heated: Yes
Finished: Yes
Enclosed: Yes
Contiguous: Yes
Permitted: Yes
Wet space: Yes
Addition: No
Conversion: No

13 Floor 1 - Breakfast Nook



Dimensions: 14'6" x 8'7"
Area: 117 sq. ft
Counted as living area: Yes

Heated: Yes
Finished: Yes
Enclosed: Yes
Contiguous: Yes
Permitted: Yes
Wet space: No
Addition: No
Conversion: No

14 Floor 1 - Hall

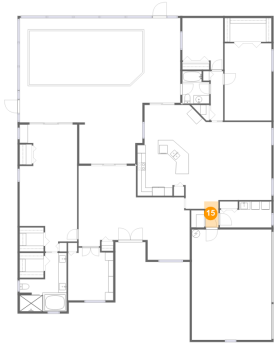


Dimensions: 3'1" x 12'0"
Area: 37 sq. ft
Counted as living area: Yes

Heated: Yes
Finished: Yes
Enclosed: Yes
Contiguous: Yes
Permitted: Yes
Wet space: No
Addition: No
Conversion: No

137 Woodcreek Drive East, Weatherstone, Safety Harbor, Pinellas County, Florida, United States, 34695

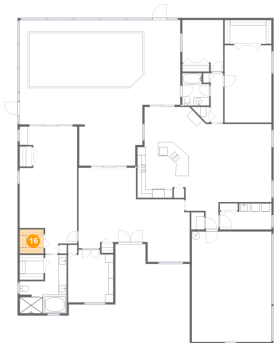
15 Floor 1 - Hall



Dimensions: 3'6" x 6'4"
Area: 20 sq. ft
Counted as living area: Yes

Heated: Yes
Finished: Yes
Enclosed: Yes
Contiguous: Yes
Permitted: Yes
Wet space: No
Addition: No
Conversion: No

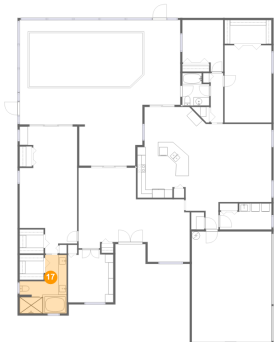
16 Floor 1 - W.I.C.



Dimensions: 5'10" x 5'10"
Area: 34 sq. ft
Counted as living area: Yes

Heated: Yes
Finished: Yes
Enclosed: Yes
Contiguous: Yes
Permitted: Yes
Wet space: No
Addition: No
Conversion: No

17 Floor 1 - Primary Bath

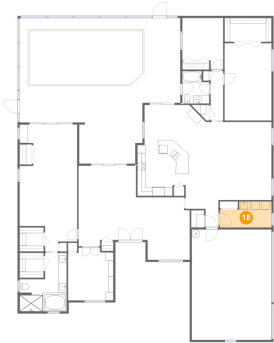


Dimensions: 11'5" x 14'3"
Area: 122 sq. ft
Counted as living area: Yes

Heated: Yes
Finished: Yes
Enclosed: Yes
Contiguous: Yes
Permitted: Yes
Wet space: Yes
Addition: No
Conversion: No

137 Woodcreek Drive East, Weatherstone, Safety Harbor, Pinellas County, Florida, United States, 34695

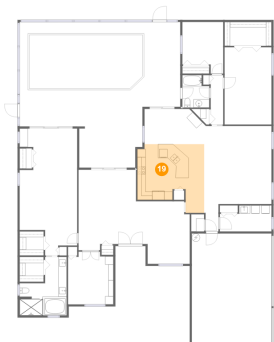
18 Floor 1 - Laundry



Dimensions: 12'7" x 6'4"
Area: 70 sq. ft
Counted as living area: Yes

Heated: Yes
Finished: Yes
Enclosed: Yes
Contiguous: Yes
Permitted: Yes
Wet space: No
Addition: No
Conversion: No

19 Floor 1 - Kitchen



Dimensions: 16'3" x 16'9"
Area: 224 sq. ft
Counted as living area: Yes

Heated: Yes
Finished: Yes
Enclosed: Yes
Contiguous: Yes
Permitted: Yes
Wet space: No
Addition: No
Conversion: No

20 Floor 1 - W.I.C.

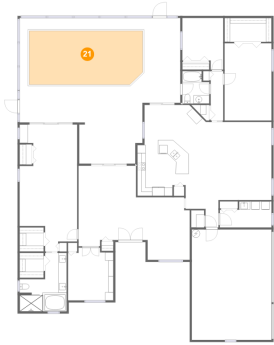


Dimensions: 11'5" x 5'10"
Area: 66 sq. ft
Counted as living area: Yes

Heated: Yes
Finished: Yes
Enclosed: Yes
Contiguous: Yes
Permitted: Yes
Wet space: No
Addition: No
Conversion: No

137 Woodcreek Drive East, Weatherstone, Safety Harbor, Pinellas County, Florida, United States, 34695

21 Floor 1 - Swimming Pool



Dimensions: 27'7" x 13'0"
Area: 355 sq. ft
Counted as living area: No

Heated: No
Finished: No
Enclosed: No
Contiguous: Yes
Permitted: No
Wet space: No
Addition: No
Conversion: No