

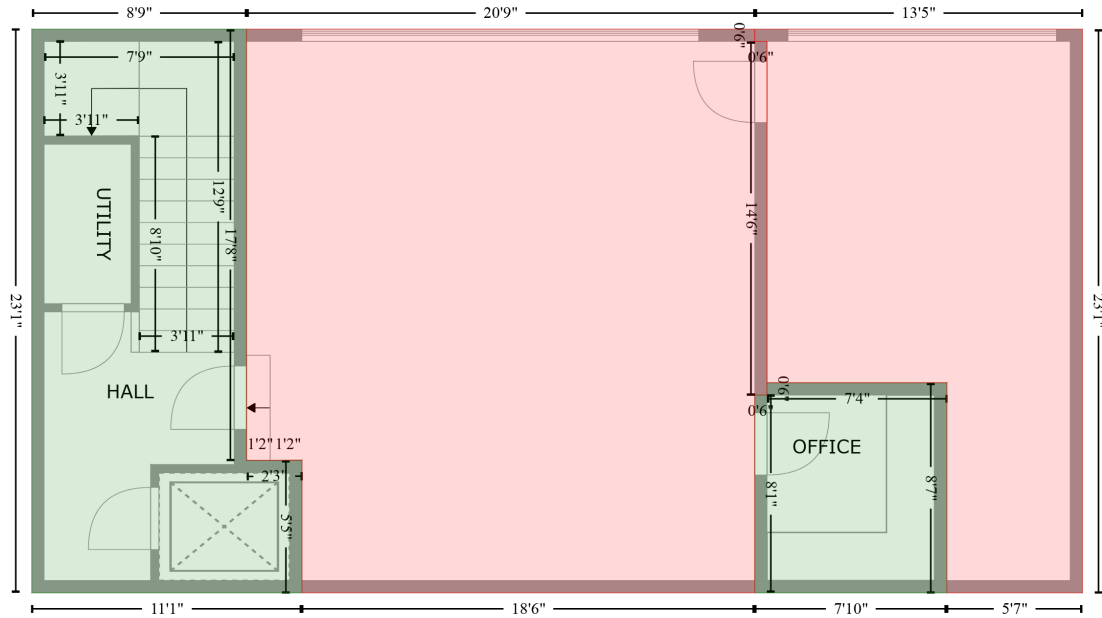
1342 Briar Chapel Parkway, Briar Chapel, Chapel Hill, Chatham County, North Carolina, United States, 27516

Gross Living Area: 4130 sq. ft

FLOOR 1 - BELOW GRADE
[AREA: 282]

GARAGE (1)
[AREA: 474]

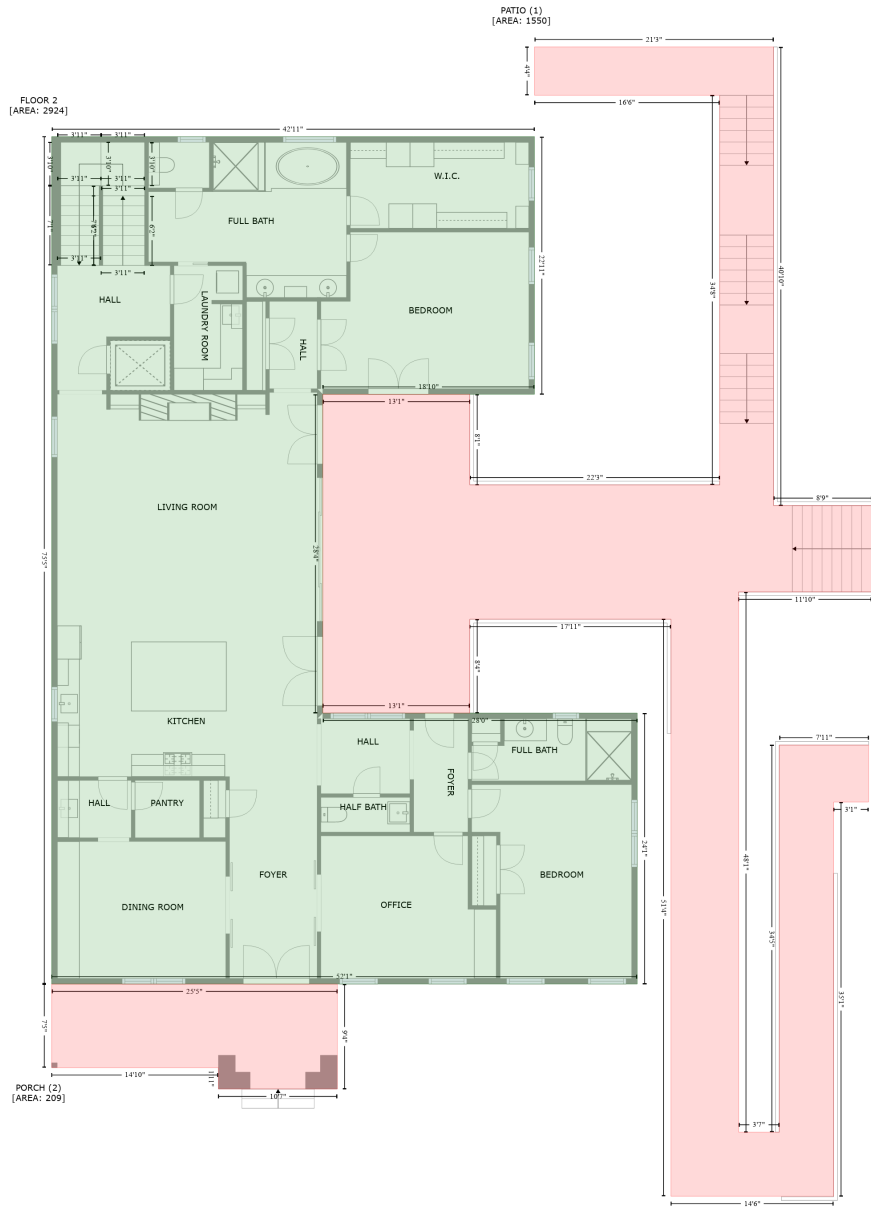
GARAGE (2)
[AREA: 235]



Space	Area (sq. ft)	Calculation <small>Coordinate Polygon Area Algorithm using inches</small>
FLOOR 1 - BELOW GRADE (Living area)	282	$-((167.4 + 167.4) * (164.3 - 376) + (167.4 + 194.7) * (376 - 375.9) + (194.7 + 194.7) * (375.9 - 441) + (194.7 + 62.1) * (441 - 441) + (62.1 + 62.1) * (441 - 164.3) + (62.1 + 167.4) * (164.3 - 164.3)) * 0.5 * 0.00694 - ((511 + 511) * (337.9 - 441) + (511 + 416.8) * (441 - 441) + (416.8 + 416.8) * (441 - 343.9) + (416.8 + 422.8) * (343.9 - 343.9) + (422.8 + 422.8) * (343.9 - 337.9) + (422.8 + 511) * (337.9 - 337.9)) * 0.5 * 0.00694$
GARAGE (Non-living area)	474	$-((416.8 + 416.8) * (164.3 - 170.3) + (416.8 + 422.8) * (170.3 - 170.3) + (422.8 + 422.8) * (170.3 - 343.9) + (422.8 + 416.8) * (343.9 - 343.9) + (416.8 + 416.8) * (343.9 - 441) + (416.8 + 194.7) * (441 - 441) + (194.7 + 194.7) * (441 - 375.9) + (194.7 + 181.1) * (375.9 - 376) + (181.1 + 167.4) * (376 - 376) + (167.4 + 167.4) * (376 - 164.3) + (167.4 + 416.8) * (164.3 - 164.3)) * 0.5 * 0.00694$
GARAGE (Non-living area)	235	$-((577.6 + 577.6) * (164.3 - 441) + (577.6 + 511) * (441 - 441) + (511 + 511) * (441 - 337.9) + (511 + 422.8) * (337.9 - 337.9) + (422.8 + 422.8) * (337.9 - 170.3) + (422.8 + 416.8) * (170.3 - 170.3) + (416.8 + 416.8) * (170.3 - 164.3) + (416.8 + 577.6) * (164.3 - 164.3)) * 0.5 * 0.00694$

1342 Briar Chapel Parkway, Briar Chapel, Chapel Hill, Chatham County, North Carolina, United States, 27516

Gross Living Area: 4130 sq. ft



Space	Area (sq. ft)	Calculation
FLOOR 2 (Living area)	2924	Coordinate Polygon Area Algorithm using inches $-\left((577.6 + 577.6) * (164.3 - 439.3) + (577.6 + 351.6) * (439.3 - 439.3) + (351.6 + 351.6) * (439.3 - 779.6) + (351.6 + 687.3) * (779.6 - 779.6) + (687.3 + 687.3) * (779.6 - 1068.9) + (687.3 + 62.1) * (1068.9 - 1068.9) + (62.1 + 62.1) * (1068.9 - 164.3) + (62.1 + 577.6) * (164.3 - 164.3)\right) * 0.5 + 0.00694$
PATIO (Non-living area)	1550	$-\left((832.8 + 832.8) * (68.5 - 558) + (832.8 + 937.6) * (558 - 558) + (937.6 + 937.6) * (558 - 650.3) + (937.6 + 795.5) * (650.3 - 650.3) + (795.5 + 795.5) * (650.3 - 1227) + (795.5 + 838.9) * (1227 - \right.$

1342 Briar Chapel Parkway, Briar Chapel, Chapel Hill, Chatham County, North Carolina, United States, 27516

Gross Living Area: 4130 sq. ft

Space	Area (sq. ft)	Calculation <small>Coordinate Polygon Area Algorithm using inches</small>
		$1227 + (838.9 + 838.9) * (1227 - 813.8) + (838.9 + 934.2) * (813.8 - 813.8) + (934.2 + 934.2) * (813.8 - 874.6) + (934.2 + 897) * (874.6 - 874.6) + (897 + 897) * (874.6 - 1295.4) + (897 + 723.3) * (1295.4 - 1295.4) + (723.3 + 723.3) * (1295.4 - 679.4) + (723.3 + 508.6) * (679.4 - 679.4) + (508.6 + 508.6) * (679.4 - 779.6) + (508.6 + 351.6) * (779.6 - 779.6) + (351.6 + 351.6) * (779.6 - 439.3) + (351.6 + 508.6) * (439.3 - 439.3) + (508.6 + 508.6) * (439.3 - 536) + (508.6 + 775.3) * (536 - 536) + (775.3 + 775.3) * (536 - 120.1) + (775.3 + 577.6) * (120.1 - 120.1) + (577.6 + 577.6) * (120.1 - 68.5) + (577.6 + 832.8) * (68.5 - 68.5) * 0.5 * 0.00694$
PORCH (Non-living area)	209	$-((367.1 + 367.1) * (1068.9 - 1180.9) + (367.1 + 240.1) * (1180.9 - 1180.9) + (240.1 + 240) * (1180.9 - 1158.1) + (240 + 62.1) * (1158.1 - 1158.1) + (62.1 + 62.1) * (1158.1 - 1068.9) + (62.1 + 367.1) * (1068.9 - 1068.9)) * 0.5 * 0.00694$

1342 Briar Chapel Parkway, Briar Chapel, Chapel Hill, Chatham County, North Carolina, United States, 27516

Gross Living Area: 4130 sq. ft



Space	Area (sq. ft)	Calculation <small>Coordinate Polygon Area Algorithm using inches</small>
FLOOR 3 (Living area)	924	$-((165.4 + 165.4) * (164.3 - 378) + (165.4 + 192.7) * (378 - 378) + (192.7 + 192.7) * (378 - 435.2) + (192.7 + 351.6) * (435.2 - 435.2) + (351.6 + 351.6) * (435.2 - 792.7) + (351.6 + 62.1) * (792.7 - 792.7) + (62.1 + 62.1) * (792.7 - 164.3) + (62.1 + 165.4) * (164.3 - 164.3)) * 0.5 * 0.00694$
LOW CEILING (Non-living area)	126	$-((128.1 + 128.1) * (792.7 - 1068.9) + (128.1 + 62.1) * (1068.9 - 1068.9) + (62.1 + 62.1) * (1068.9 - 792.7) + (62.1 + 128.1) * (792.7 - 792.7)) * 0.5 * 0.00694$
LOW CEILING	118	$-((351.6 + 351.6) * (792.7 - 1068.9) + (351.6 + 290.1) * (1068.9 - 1068.9) + (290.1 + 290.1) * (1068.9 - 792.7)) * 0.5 * 0.00694$

1342 Briar Chapel Parkway, Briar Chapel, Chapel Hill, Chatham County, North Carolina, United States, 27516

Gross Living Area: 4130 sq. ft

Space	Area (sq. ft)	Calculation <small>Coordinate Polygon Area Algorithm using inches</small>
(Non-living area)		$(1068.9 - 792.7) + (290.1 + 351.6) * (792.7 - 792.7) * 0.5 * 0.00694$
LOW CEILING (Non-living area)	104	$-((351.6 + 351.6) * (164.3 - 435.2) + (351.6 + 296.3) * (435.2 - 435.2) + (296.3 + 296.3) * (435.2 - 164.3) + (296.3 + 351.6) * (164.3 - 164.3)) * 0.5 * 0.00694$
ATTIC (Non-living area)	311	$-((290.1 + 290.1) * (792.7 - 1068.9) + (290.1 + 128.1) * (1068.9 - 1068.9) + (128.1 + 128.1) * (1068.9 - 792.7) + (128.1 + 290.1) * (792.7 - 792.7)) * 0.5 * 0.00694$
ATTIC (Non-living area)	235	$-((296.3 + 296.3) * (164.3 - 435.2) + (296.3 + 192.7) * (435.2 - 435.2) + (192.7 + 192.7) * (435.2 - 378) + (192.7 + 165.4) * (378 - 378) + (165.4 + 165.4) * (378 - 164.3) + (165.4 + 296.3) * (164.3 - 164.3)) * 0.5 * 0.00694$