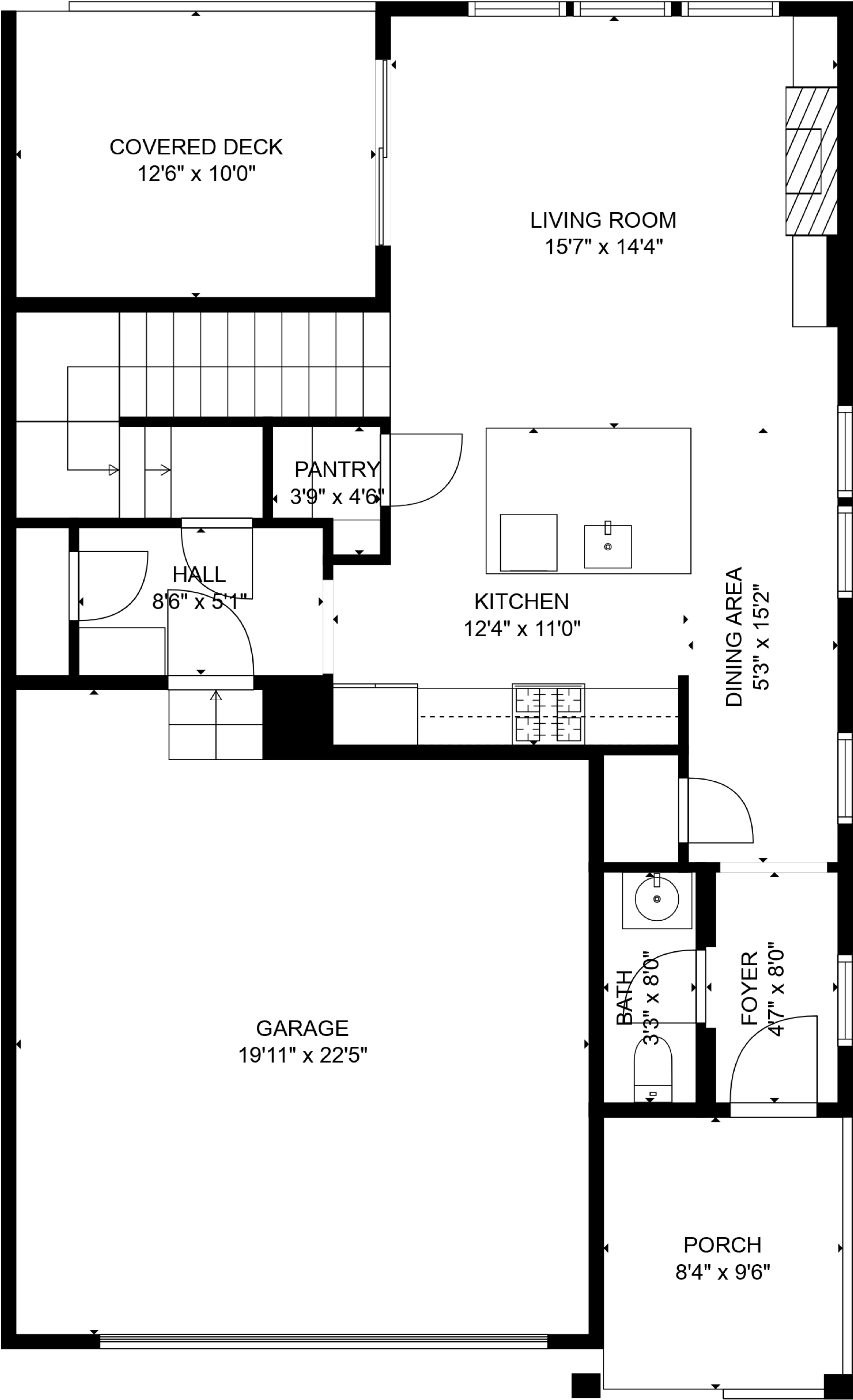


BASEMENT
28'7" x 37'3"

TOTAL: 1706 sq. ft

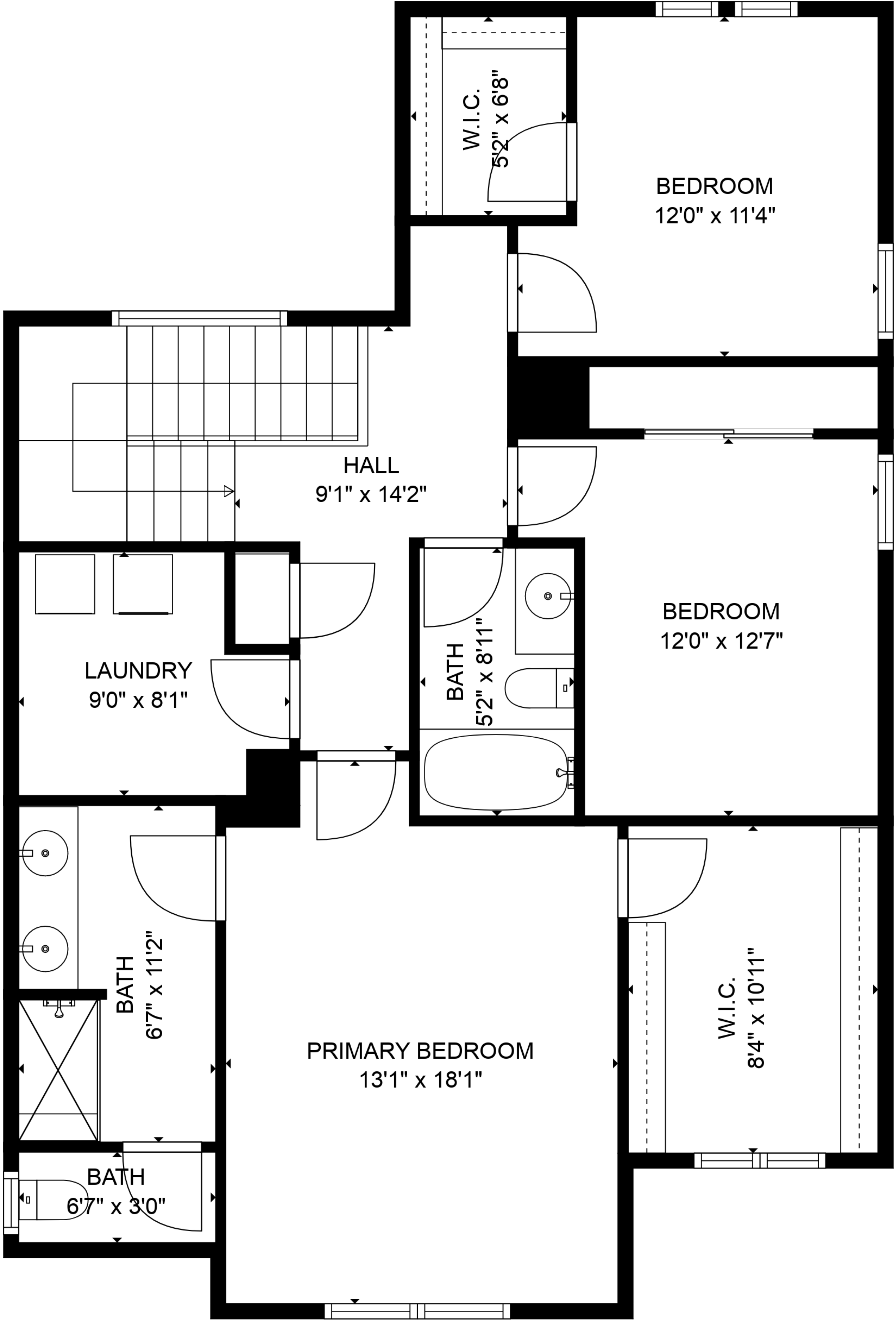
BELOW GROUND: 0 sq. ft, FLOOR 2: 672 sq. ft, FLOOR 3: 1034 sq. ft
EXCLUDED AREAS: BASEMENT: 636 sq. ft, GARAGE: 420 sq. ft, COVERED DECK: 125 sq. ft,
PORCH: 79 sq. ft
WALLS: 238 sq. ft

SIZES AND DIMENSIONS ARE APPROXIMATE, ACTUAL MAY VARY.



TOTAL: 1706 sq. ft
BELOW GROUND: 0 sq. ft, FLOOR 2: 672 sq. ft, FLOOR 3: 1034 sq. ft
EXCLUDED AREAS: BASEMENT: 636 sq. ft, GARAGE: 420 sq. ft, COVERED DECK: 125 sq. ft,
PORCH: 79 sq. ft
WALLS: 238 sq. ft

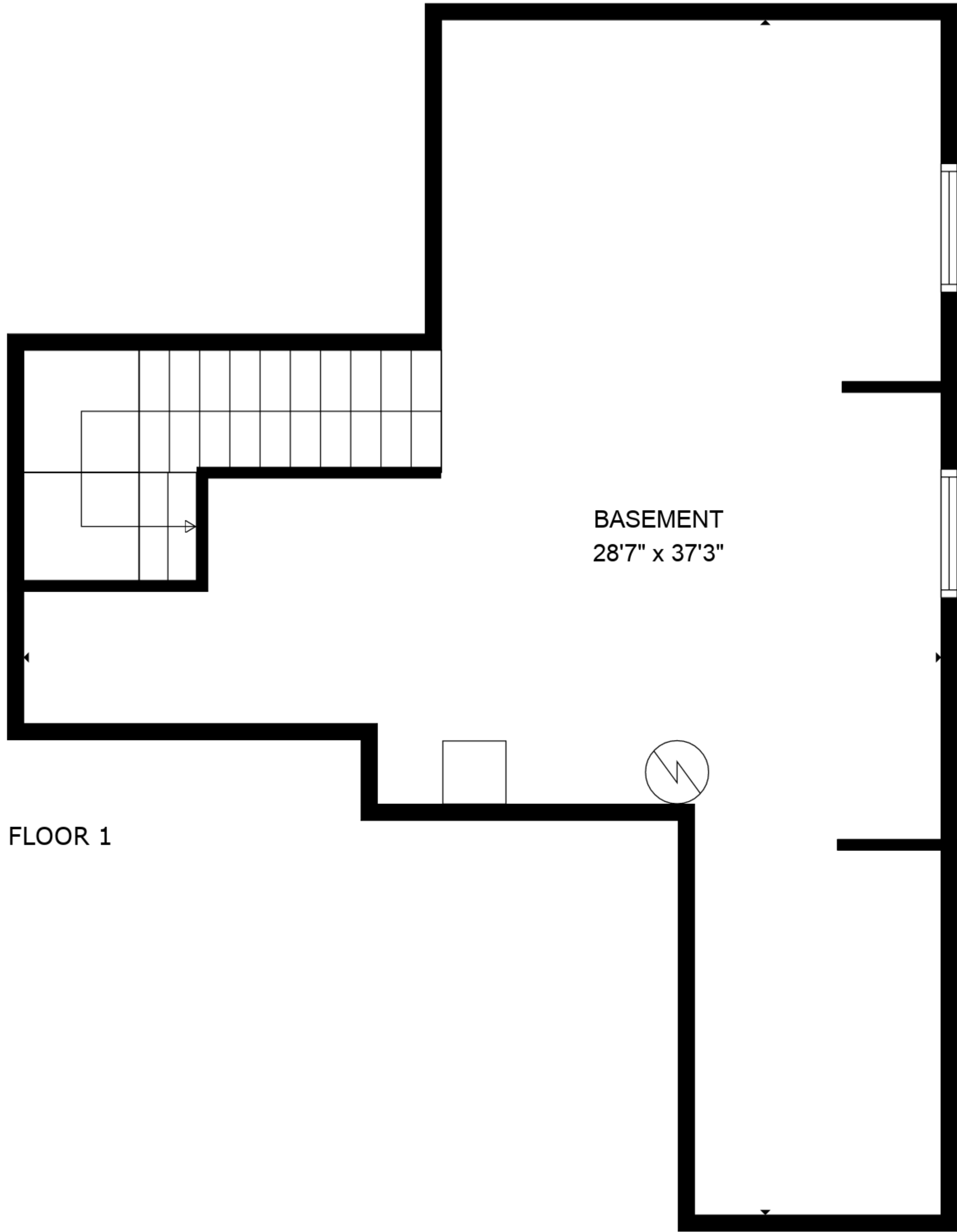
SIZES AND DIMENSIONS ARE APPROXIMATE, ACTUAL MAY VARY.



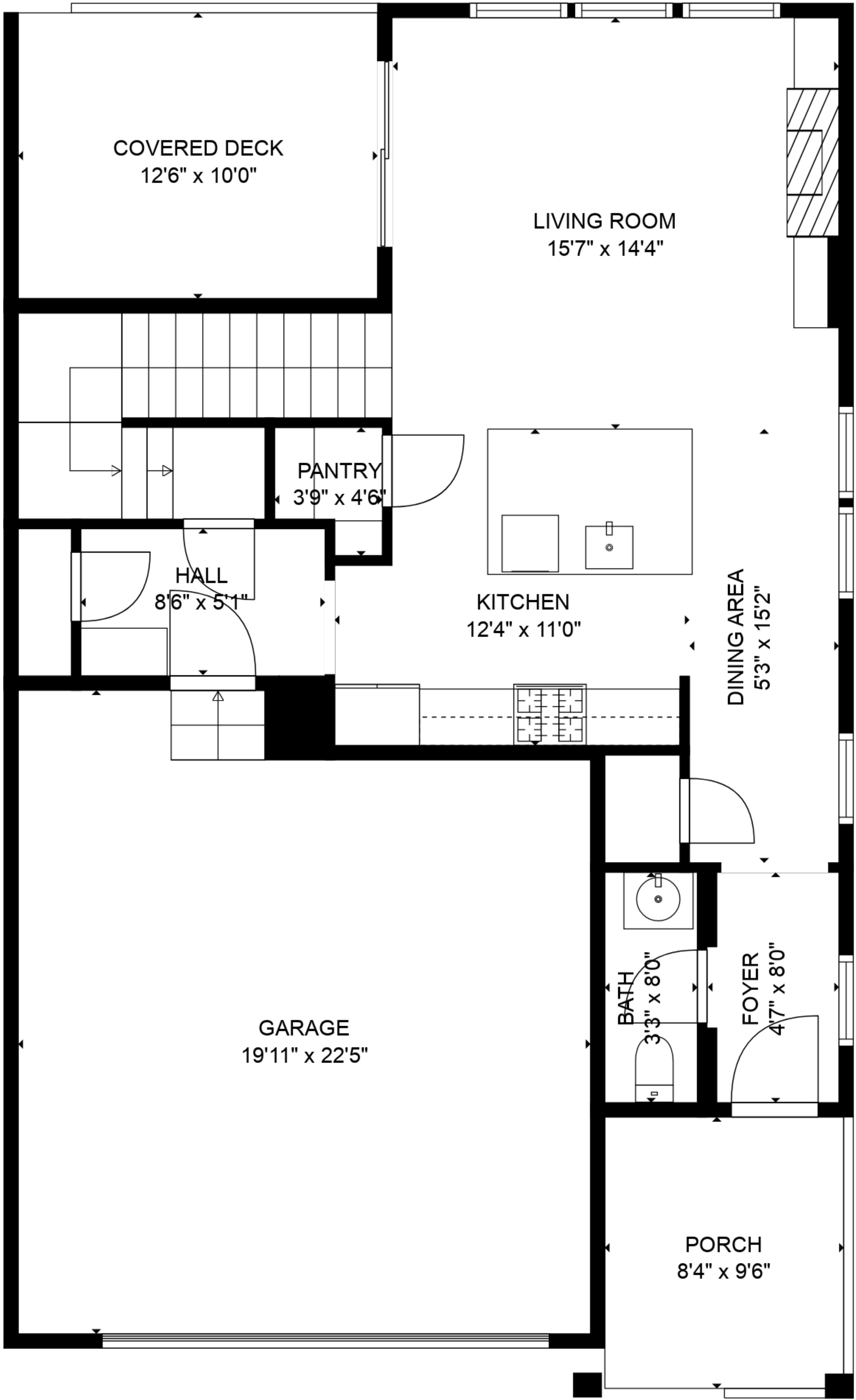
TOTAL: 1706 sq. ft

BELOW GROUND: 0 sq. ft, FLOOR 2: 672 sq. ft, FLOOR 3: 1034 sq. ft
EXCLUDED AREAS: BASEMENT: 636 sq. ft, GARAGE: 420 sq. ft, COVERED DECK: 125 sq. ft,
PORCH: 79 sq. ft
WALLS: 238 sq. ft

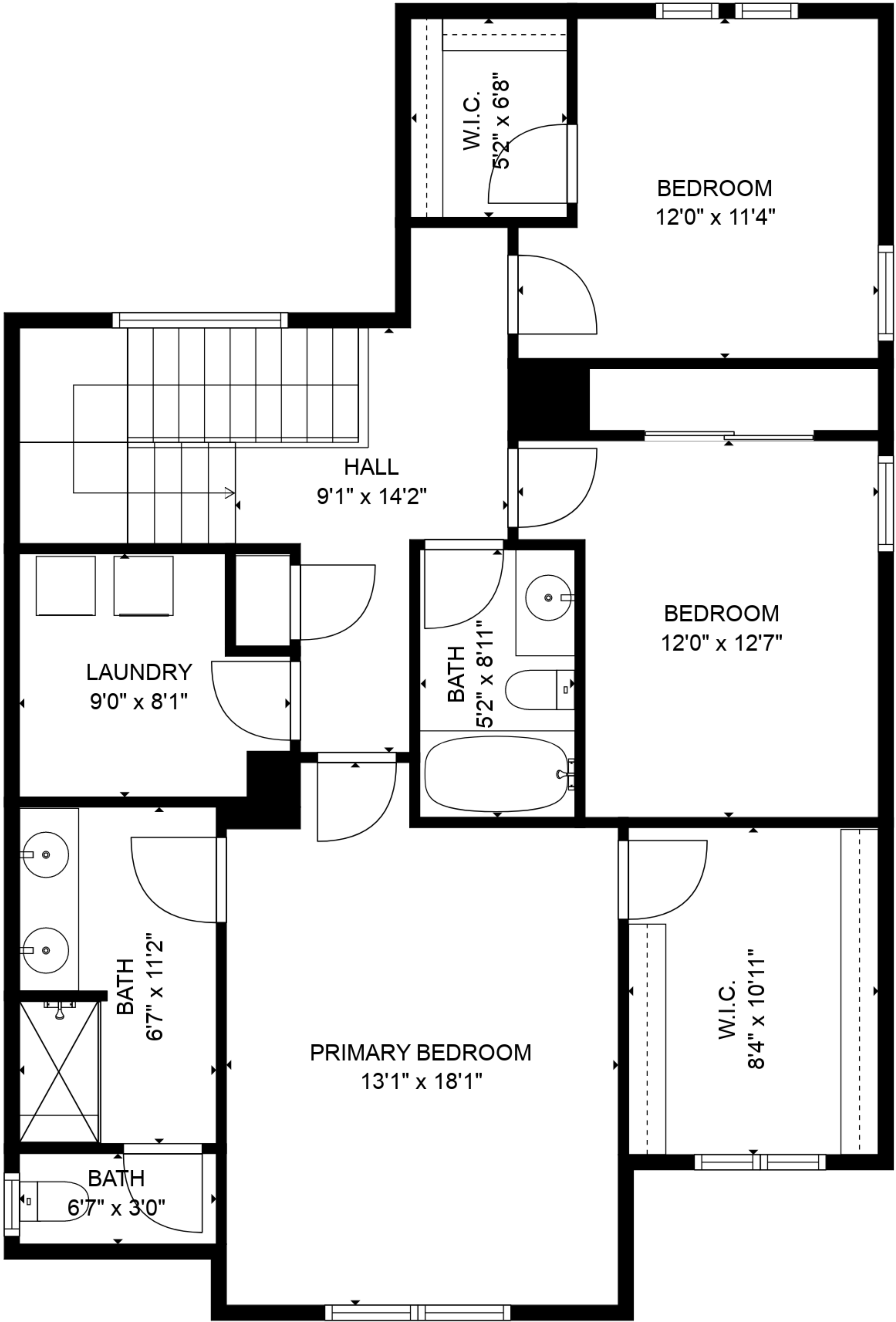
SIZES AND DIMENSIONS ARE APPROXIMATE, ACTUAL MAY VARY.



FLOOR 1



FLOOR 2



FLOOR 3

TOTAL: 1706 sq. ft
BELOW GROUND: 0 sq. ft, FLOOR 2: 672 sq. ft, FLOOR 3: 1034 sq. ft
EXCLUDED AREAS: BASEMENT: 636 sq. ft, GARAGE: 420 sq. ft, COVERED DECK: 125 sq. ft,
PORCH: 79 sq. ft
WALLS: 238 sq. ft

SIZES AND DIMENSIONS ARE APPROXIMATE, ACTUAL MAY VARY.