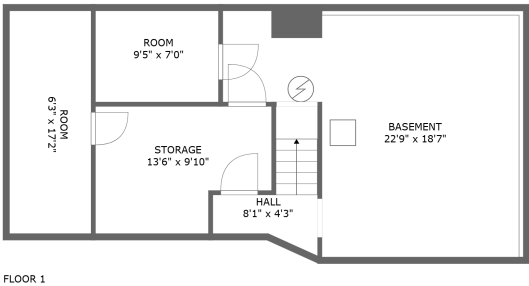
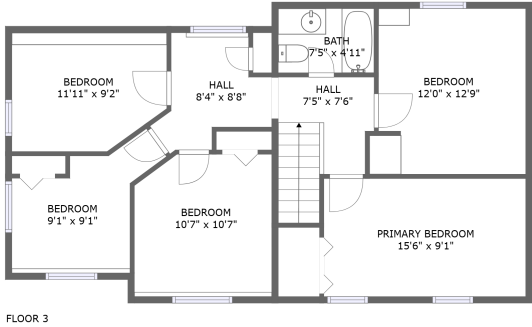
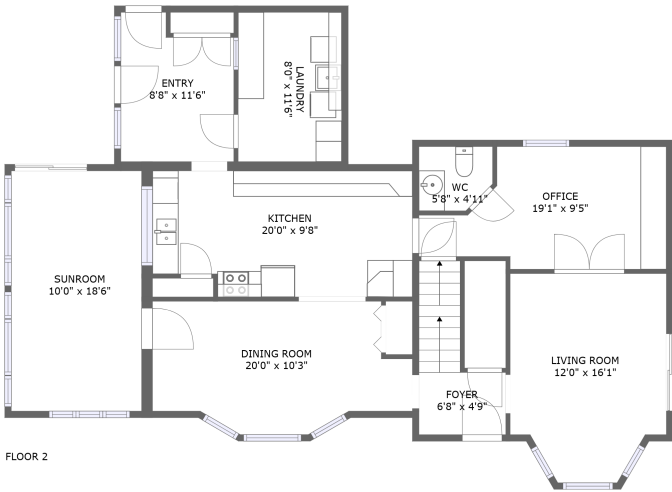


Home report

5348 Dunning Road, Vars, Navan, Ontario, Canada, K4B 1J1



Property summary



0 Garages



5 Bedrooms



1 Bathrooms



1 Half baths



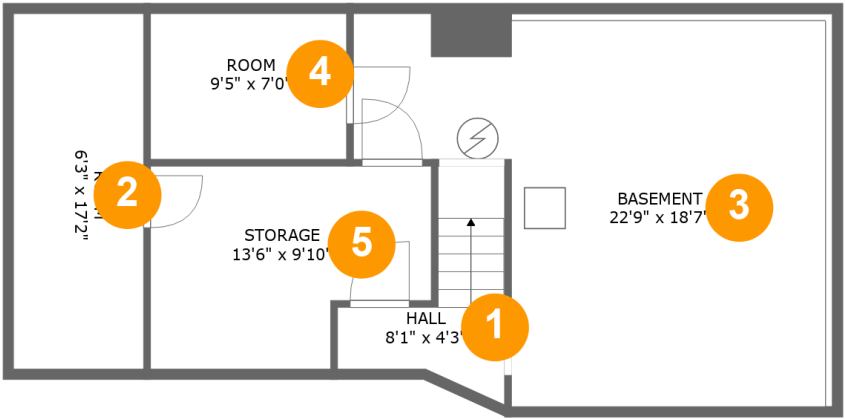
3 Floors



2,196 Gross living area sqft



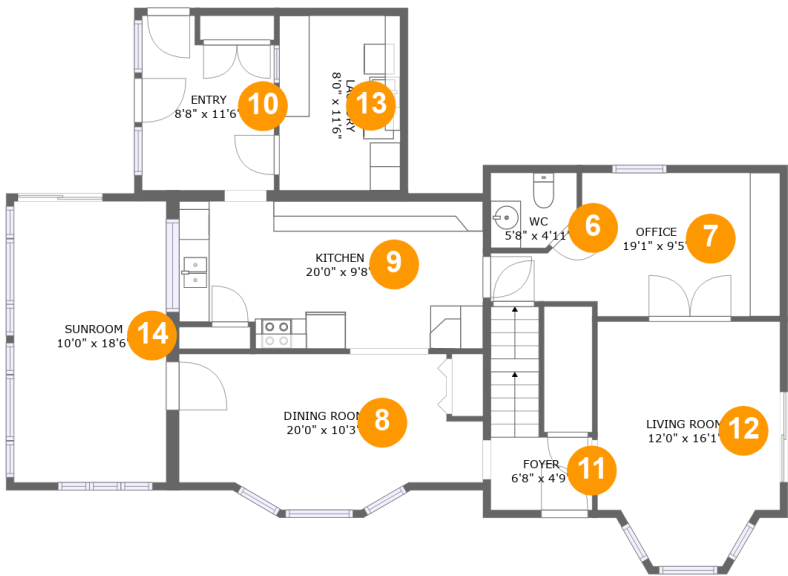
2,991 Total sqft



Room dimensions

Floor 1 Total sqft: 769 Living area: 0

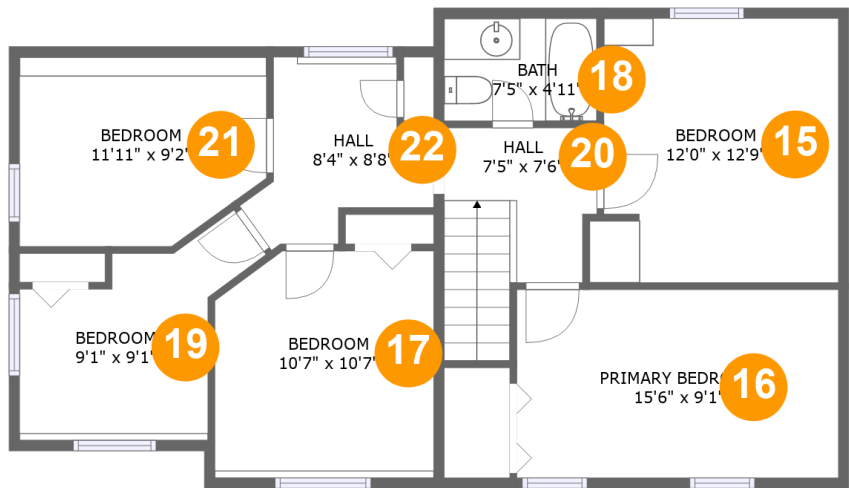
#		Dimensions	sqft	Counted as living area
1	Hall	8'1" x 4'3"	49 sq. ft	No
2	Room	6'3" x 17'2"	108 sq. ft	No
3	Basement	22'9" x 18'7"	339 sq. ft	No
4	Room	9'5" x 7'0"	66 sq. ft	No
5	Storage	13'6" x 9'10"	117 sq. ft	No



Room dimensions

Floor 2 Total sqft: 1338 Living area: 1338

#		Dimensions	sqft	Counted as living area
6	WC	5'8" x 4'11"	26 sq. ft	Yes
7	Office	19'1" x 9'5"	144 sq. ft	Yes
8	Dining Room	20'0" x 10'3"	174 sq. ft	Yes
9	Kitchen	20'0" x 9'8"	185 sq. ft	Yes
10	Entry	8'8" x 11'6"	90 sq. ft	Yes
11	Foyer	6'8" x 4'9"	59 sq. ft	Yes
12	Living Room	12'0" x 16'1"	174 sq. ft	Yes
13	Laundry	8'0" x 11'6"	92 sq. ft	Yes
14	Sunroom	10'0" x 18'6"	186 sq. ft	Yes

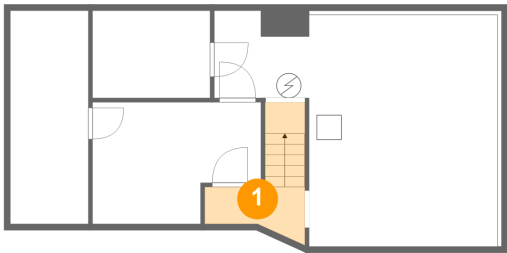


Room dimensions

Floor 3 Total sqft: 884 Living area: 858

#		Dimensions	sqft	Counted as living area
15	Bedroom	12'0" x 12'9"	137 sq. ft	Yes
16	Primary Bedroom	15'6" x 9'1"	135 sq. ft	Yes
17	Bedroom	10'7" x 10'7"	112 sq. ft	Yes
18	Bath	7'5" x 4'11"	37 sq. ft	Yes
19	Bedroom	9'1" x 9'1"	82 sq. ft	Yes
20	Hall	7'5" x 7'6"	65 sq. ft	Yes
21	Bedroom	11'11" x 9'2"	101 sq. ft	Yes
22	Hall	8'4" x 8'8"	59 sq. ft	Yes

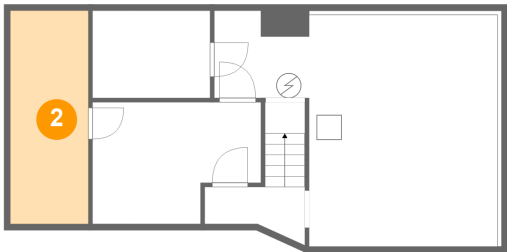
1 Floor 1 - Hall



Dimensions: 8'1" x 4'3"
Area: 49 sq. ft
Counted as living area: No

Heated: Yes
Finished: No
Enclosed: Yes
Contiguous: Yes
Permitted: Yes
Wet space: No
Addition: No
Conversion: No

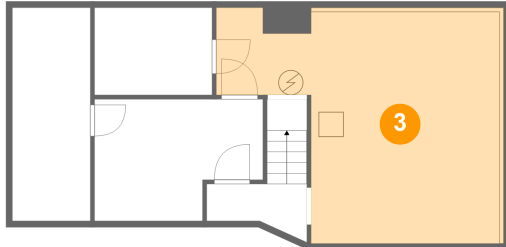
2 Floor 1 - Room



Dimensions: 6'3" x 17'2"
Area: 108 sq. ft
Counted as living area: No

Heated: Yes
Finished: No
Enclosed: Yes
Contiguous: Yes
Permitted: Yes
Wet space: No
Addition: No
Conversion: No

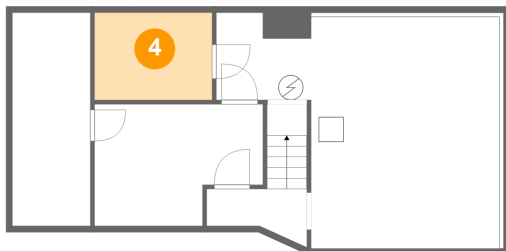
3 Floor 1 - Basement



Dimensions: 22'9" x 18'7"
Area: 339 sq. ft
Counted as living area: No

Heated: Yes
Finished: No
Enclosed: Yes
Contiguous: Yes
Permitted: Yes
Wet space: No
Addition: No
Conversion: No

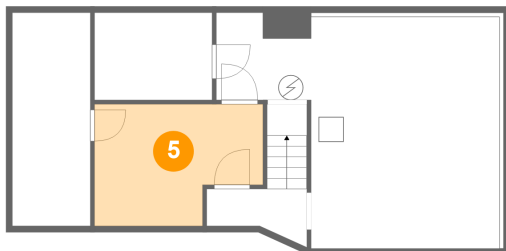
4 Floor 1 - Room



Dimensions: 9'5" x 7'0"
Area: 66 sq. ft
Counted as living area: No

Heated: Yes
Finished: No
Enclosed: Yes
Contiguous: Yes
Permitted: Yes
Wet space: No
Addition: No
Conversion: No

5 Floor 1 - Storage



Dimensions: 13'6" x 9'10"
Area: 117 sq. ft
Counted as living area: No

Heated: No
Finished: No
Enclosed: No
Contiguous: Yes
Permitted: Yes
Wet space: No
Addition: No
Conversion: No

6 Floor 2 - WC



Dimensions: 5'8" x 4'11"
Area: 26 sq. ft
Counted as living area: Yes

Heated: Yes
Finished: Yes
Enclosed: Yes
Contiguous: Yes
Permitted: Yes
Wet space: Yes
Addition: No
Conversion: No

7 Floor 2 - Office



Dimensions: 19'1" x 9'5"
Area: 144 sq. ft
Counted as living area: Yes

Heated: Yes
Finished: Yes
Enclosed: Yes
Contiguous: Yes
Permitted: Yes
Wet space: No
Addition: No
Conversion: No

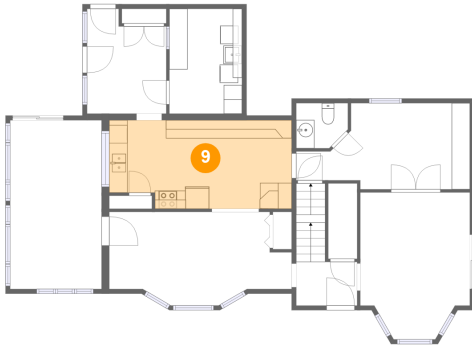
8 Floor 2 - Dining Room



Dimensions: 20'0" x 10'3"
Area: 174 sq. ft
Counted as living area: Yes

Heated: Yes
Finished: Yes
Enclosed: Yes
Contiguous: Yes
Permitted: Yes
Wet space: No
Addition: No
Conversion: No

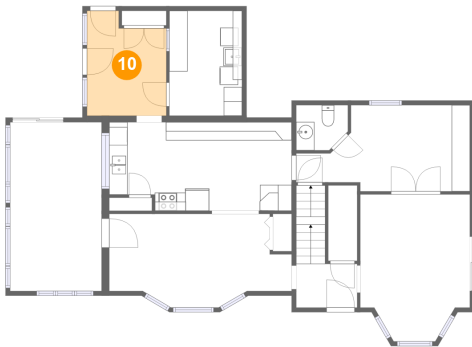
9 Floor 2 - Kitchen



Dimensions: 20'0" x 9'8"
Area: 185 sq. ft
Counted as living area: Yes

Heated: Yes
Finished: Yes
Enclosed: Yes
Contiguous: Yes
Permitted: Yes
Wet space: No
Addition: No
Conversion: No

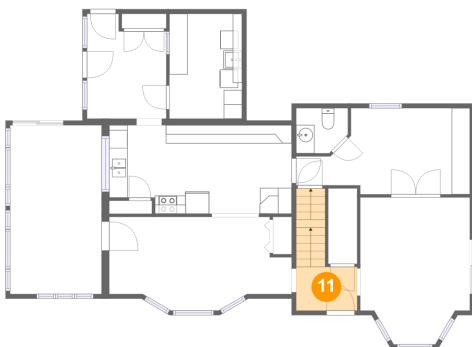
10 Floor 2 - Entry



Dimensions: 8'8" x 11'6"
Area: 90 sq. ft
Counted as living area: Yes

Heated: Yes
Finished: Yes
Enclosed: Yes
Contiguous: Yes
Permitted: Yes
Wet space: No
Addition: No
Conversion: No

11 Floor 2 - Foyer



Dimensions: 6'8" x 4'9"
Area: 59 sq. ft
Counted as living area: Yes

Heated: Yes
Finished: Yes
Enclosed: Yes
Contiguous: Yes
Permitted: Yes
Wet space: No
Addition: No
Conversion: No

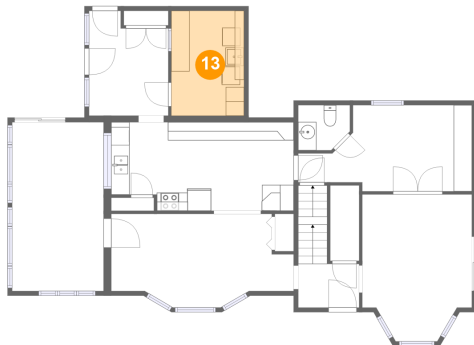
12 Floor 2 - Living Room



Dimensions: 12'0" x 16'1"
Area: 174 sq. ft
Counted as living area: Yes

Heated: Yes
Finished: Yes
Enclosed: Yes
Contiguous: Yes
Permitted: Yes
Wet space: No
Addition: No
Conversion: No

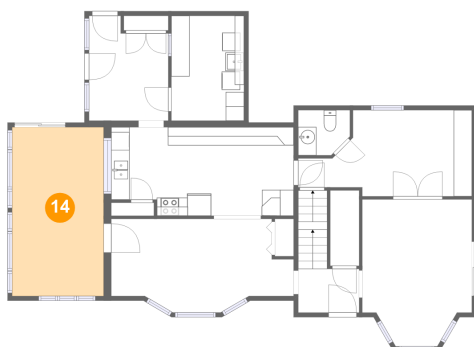
13 Floor 2 - Laundry



Dimensions: 8'0" x 11'6"
Area: 92 sq. ft
Counted as living area: Yes

Heated: Yes
Finished: Yes
Enclosed: Yes
Contiguous: Yes
Permitted: Yes
Wet space: No
Addition: No
Conversion: No

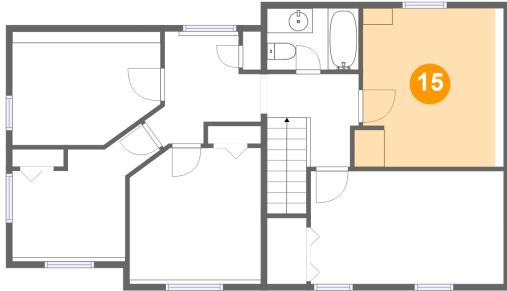
14 Floor 2 - Sunroom



Dimensions: 10'0" x 18'6"
Area: 186 sq. ft
Counted as living area: Yes

Heated: Yes
Finished: Yes
Enclosed: Yes
Contiguous: Yes
Permitted: Yes
Wet space: No
Addition: No
Conversion: No

15 Floor 3 - Bedroom



Dimensions: 12'0" x 12'9"
Area: 137 sq. ft
Counted as living area: Yes

Heated: Yes
Finished: Yes
Enclosed: Yes
Contiguous: Yes
Permitted: Yes
Wet space: No
Addition: No
Conversion: No

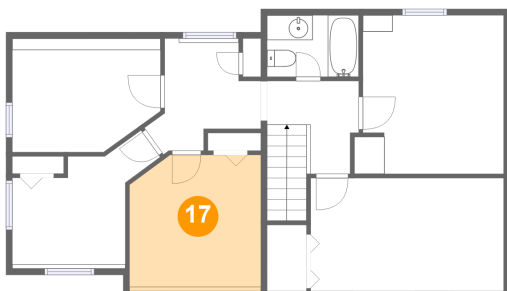
16 Floor 3 - Primary Bedroom



Dimensions: 15'6" x 9'1"
Area: 135 sq. ft
Counted as living area: Yes

Heated: Yes
Finished: Yes
Enclosed: Yes
Contiguous: Yes
Permitted: Yes
Wet space: No
Addition: No
Conversion: No

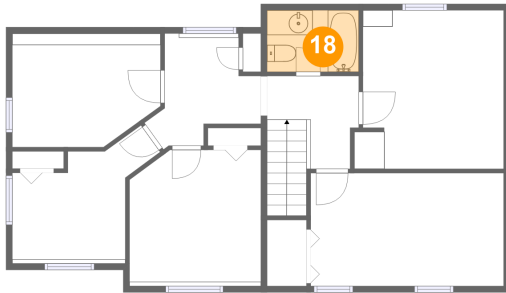
17 Floor 3 - Bedroom



Dimensions: 10'7" x 10'7"
Area: 112 sq. ft
Counted as living area: Yes

Heated: Yes
Finished: Yes
Enclosed: Yes
Contiguous: Yes
Permitted: Yes
Wet space: No
Addition: No
Conversion: No

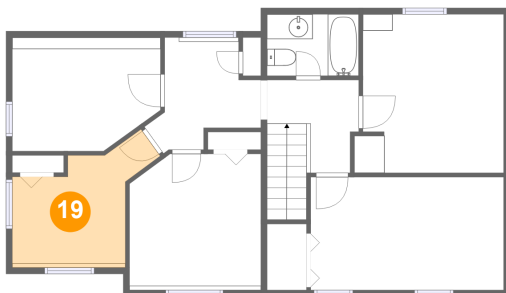
18 Floor 3 - Bath



Dimensions: 7'5" x 4'11"
Area: 37 sq. ft
Counted as living area: Yes

Heated: Yes
Finished: Yes
Enclosed: Yes
Contiguous: Yes
Permitted: Yes
Wet space: Yes
Addition: No
Conversion: No

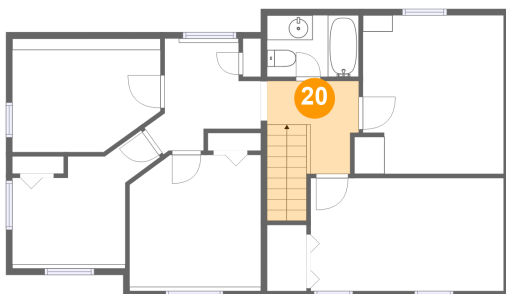
19 Floor 3 - Bedroom



Dimensions: 9'1" x 9'1"
Area: 82 sq. ft
Counted as living area: Yes

Heated: Yes
Finished: Yes
Enclosed: Yes
Contiguous: Yes
Permitted: Yes
Wet space: No
Addition: No
Conversion: No

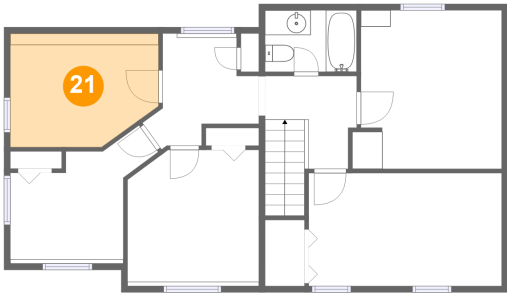
20 Floor 3 - Hall



Dimensions: 7'5" x 7'6"
Area: 65 sq. ft
Counted as living area: Yes

Heated: Yes
Finished: Yes
Enclosed: Yes
Contiguous: Yes
Permitted: Yes
Wet space: No
Addition: No
Conversion: No

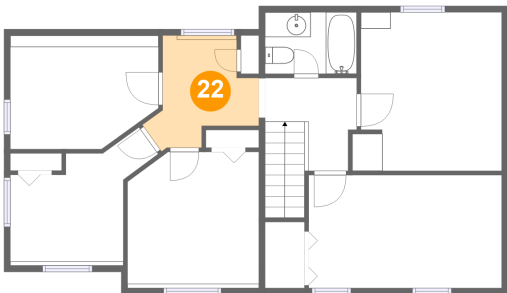
21 Floor 3 - Bedroom



Dimensions: 11'11" x 9'2"
Area: 101 sq. ft
Counted as living area: Yes

Heated: Yes
Finished: Yes
Enclosed: Yes
Contiguous: Yes
Permitted: Yes
Wet space: No
Addition: No
Conversion: No

22 Floor 3 - Hall



Dimensions: 8'4" x 8'8"
Area: 59 sq. ft
Counted as living area: Yes

Heated: Yes
Finished: Yes
Enclosed: Yes
Contiguous: Yes
Permitted: Yes
Wet space: No
Addition: No
Conversion: No