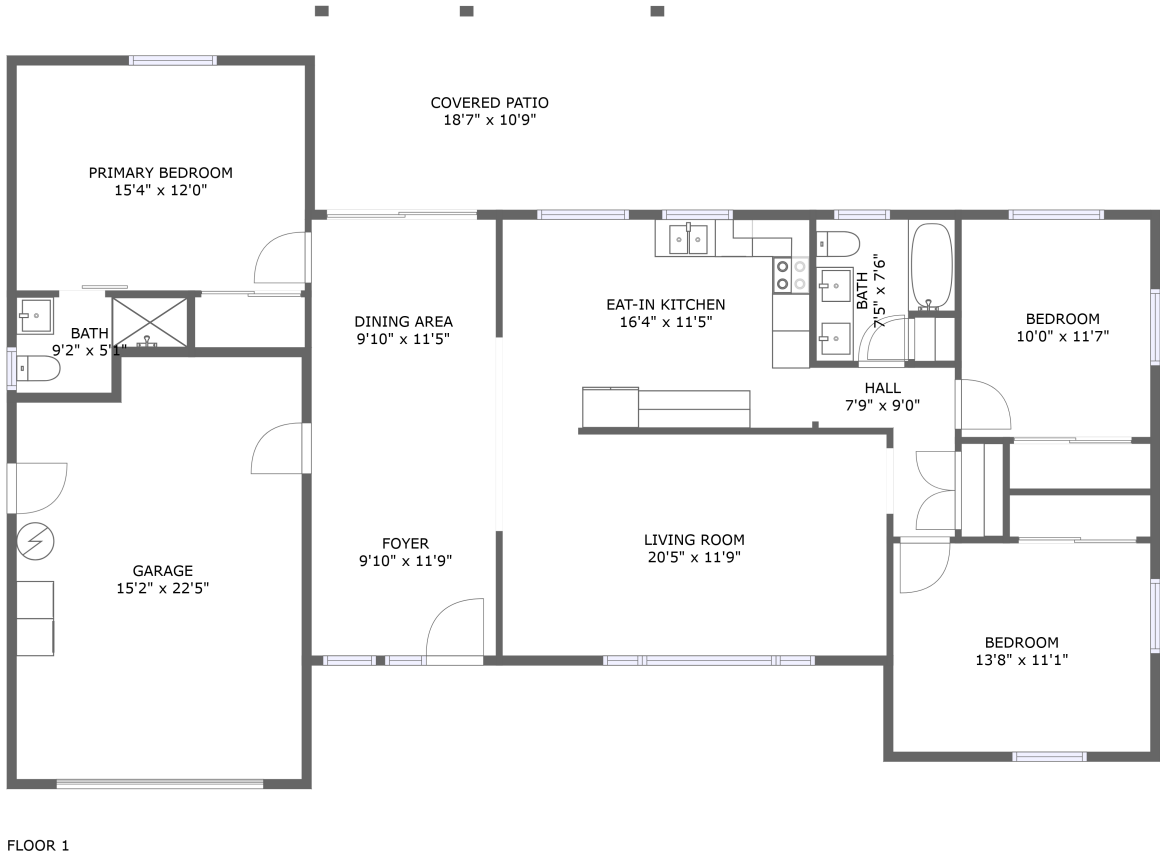




Home report


13514 Oval Drive North, Anona, Largo, Pinellas County, Florida,
United States, 33774





Property summary


 **1** Garages


 **3** Bedrooms

 **2** Bathrooms

 **0** Half baths

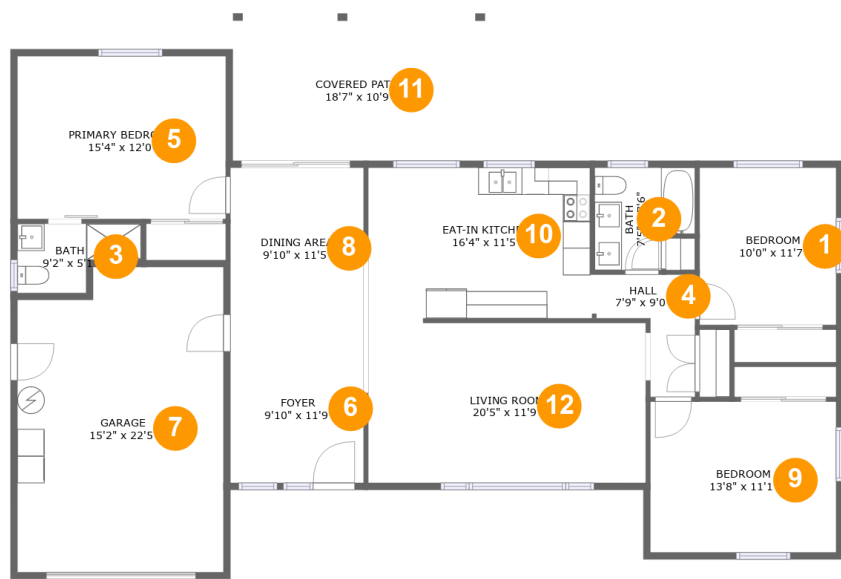
 **1** Floors

 **1,444** Gross living area sqft

 **1,992** Total sqft

Home report

13514 Oval Drive North, Anona, Largo, Pinellas County, Florida,
United States, 33774



Room dimensions

Floor 1 Total sqft: 1992 Living area: 1444

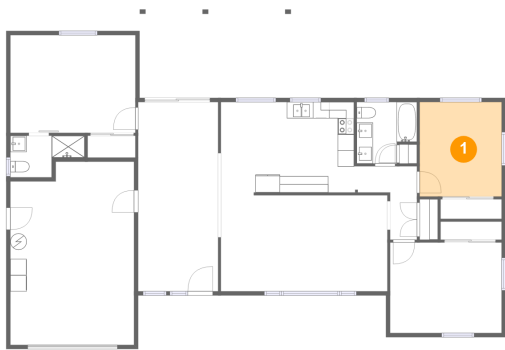
#		Max Dimensions	sqft	Included
1	Bedroom	10'0" x 11'7"	116 sq. ft	Yes
2	Bath	7'5" x 7'6"	49 sq. ft	Yes
3	Bath	9'2" x 5'1"	37 sq. ft	Yes
4	Hall	7'9" x 9'0"	44 sq. ft	Yes
5	Primary Bedroom	15'4" x 12'0"	183 sq. ft	Yes
6	Foyer	9'10" x 11'9"	115 sq. ft	Yes
7	Garage	15'2" x 22'5"	326 sq. ft	No
8	Dining Area	9'10" x 11'5"	111 sq. ft	Yes
9	Bedroom	13'8" x 11'1"	151 sq. ft	Yes
10	Eat-in Kitchen	16'4" x 11'5"	182 sq. ft	Yes
11	Covered Patio	18'7" x 10'9"	201 sq. ft	No

Home report

13514 Oval Drive North, Anona, Largo, Pinellas County, Florida,
United States, 33774

#		Max Dimensions	sqft	Included
12	Living Room	20'5" x 11'9"	240 sq. ft	Yes

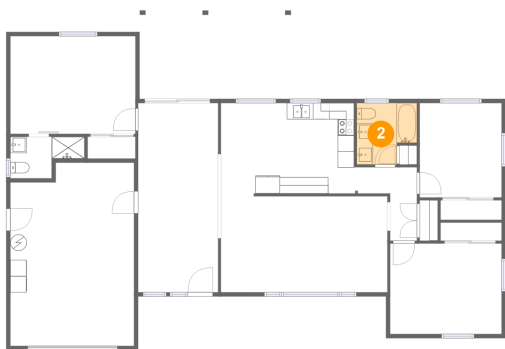
1 Floor 1 - Bedroom



Max Dimensions: 10'0" x 11'7"
Calculated Area: 116 sq. ft
Included: Yes

Heated: Yes
Finished: Yes
Enclosed: Yes
Contiguous: Yes
Permitted: Yes
Wet space: No
Addition: No
Conversion: No

2 Floor 1 - Bath



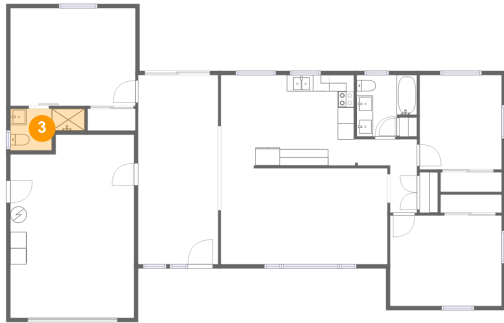
Max Dimensions: 7'5" x 7'6"
Calculated Area: 49 sq. ft
Included: Yes

Heated: Yes
Finished: Yes
Enclosed: Yes
Contiguous: Yes
Permitted: Yes
Wet space: Yes
Addition: No
Conversion: No

Home report

13514 Oval Drive North, Anona, Largo, Pinellas County, Florida,
United States, 33774

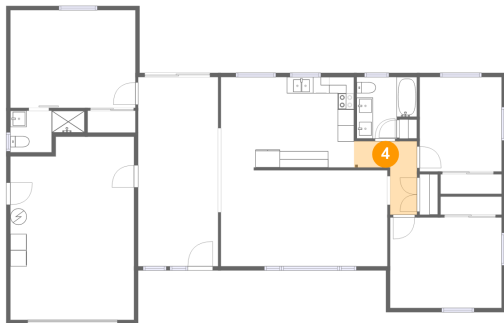
3 Floor 1 - Bath



Max Dimensions: 9'2" x 5'1"
Calculated Area: 37 sq. ft
Included: Yes

Heated: Yes
Finished: Yes
Enclosed: Yes
Contiguous: Yes
Permitted: Yes
Wet space: Yes
Addition: No
Conversion: No

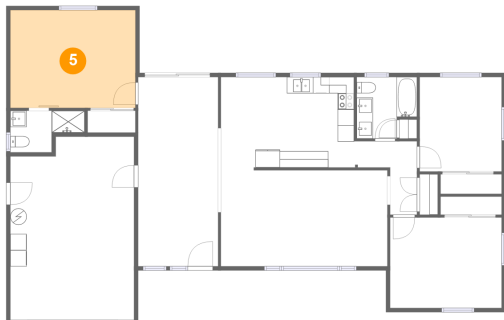
4 Floor 1 - Hall



Max Dimensions: 7'9" x 9'0"
Calculated Area: 44 sq. ft
Included: Yes

Heated: Yes
Finished: Yes
Enclosed: Yes
Contiguous: Yes
Permitted: Yes
Wet space: No
Addition: No
Conversion: No

5 Floor 1 - Primary Bedroom

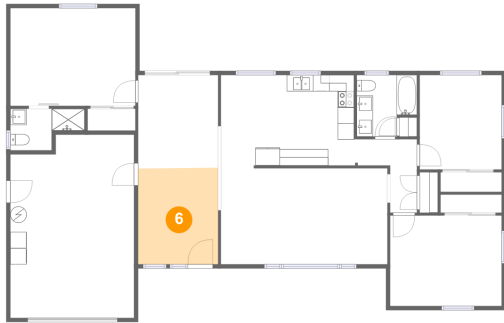


Max Dimensions: 15'4" x 12'0"
Calculated Area: 183 sq. ft
Included: Yes

Heated: Yes
Finished: Yes
Enclosed: Yes
Contiguous: Yes
Permitted: Yes
Wet space: No
Addition: No
Conversion: No

13514 Oval Drive North, Anona, Largo, Pinellas County, Florida,
United States, 33774

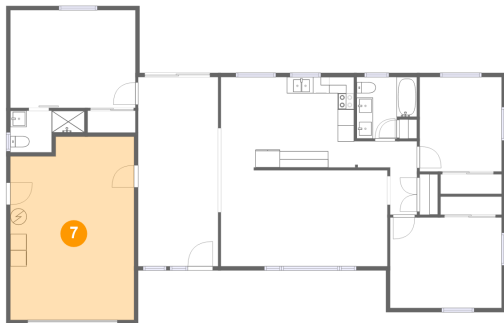
6 Floor 1 - Foyer



Max Dimensions: 9'10" x 11'9"
Calculated Area: 115 sq. ft
Included: Yes

Heated: Yes
Finished: Yes
Enclosed: Yes
Contiguous: Yes
Permitted: Yes
Wet space: No
Addition: No
Conversion: No

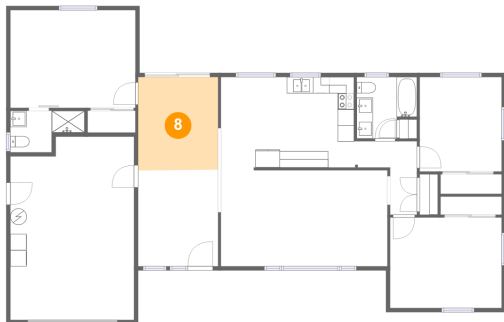
7 Floor 1 - Garage



Max Dimensions: 15'2" x 22'5"
Calculated Area: 326 sq. ft
Included: No

Heated: No
Finished: No
Enclosed: Yes
Contiguous: Yes
Permitted: Yes
Wet space: No
Addition: No
Conversion: No

8 Floor 1 - Dining Area



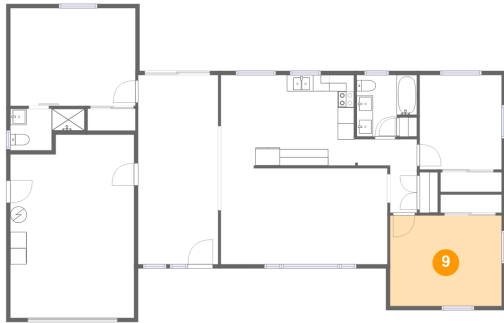
Max Dimensions: 9'10" x 11'5"
Calculated Area: 111 sq. ft
Included: Yes

Heated: Yes
Finished: Yes
Enclosed: Yes
Contiguous: Yes
Permitted: Yes
Wet space: No
Addition: No
Conversion: No

Home report

13514 Oval Drive North, Anona, Largo, Pinellas County, Florida,
United States, 33774

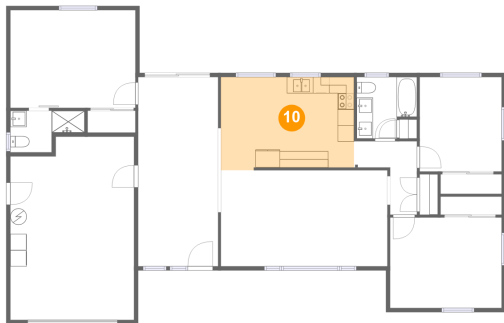
9 Floor 1 - Bedroom



Max Dimensions: 13'8" x 11'1"
Calculated Area: 151 sq. ft
Included: Yes

Heated: Yes
Finished: Yes
Enclosed: Yes
Contiguous: Yes
Permitted: Yes
Wet space: No
Addition: No
Conversion: No

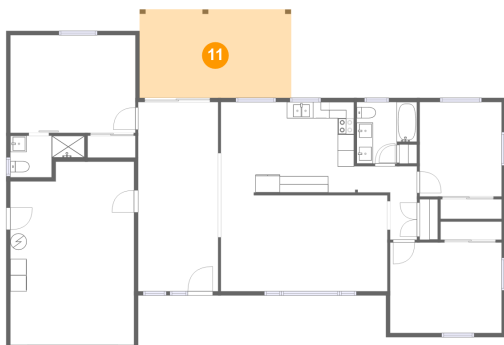
10 Floor 1 - Eat-in Kitchen



Max Dimensions: 16'4" x 11'5"
Calculated Area: 182 sq. ft
Included: Yes

Heated: Yes
Finished: Yes
Enclosed: Yes
Contiguous: Yes
Permitted: Yes
Wet space: No
Addition: No
Conversion: No

11 Floor 1 - Covered Patio



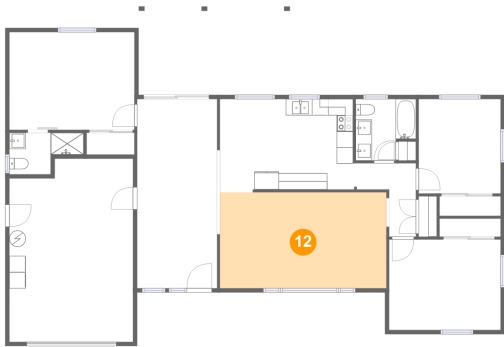
Max Dimensions: 18'7" x 10'9"
Calculated Area: 201 sq. ft
Included: No

Heated: No
Finished: Yes
Enclosed: No
Contiguous: Yes
Permitted: Yes
Wet space: No
Addition: No
Conversion: No

Home report

13514 Oval Drive North, Anona, Largo, Pinellas County, Florida,
United States, 33774

12 Floor 1 - Living Room



Max Dimensions: 20'5" x 11'9"
Calculated Area: 240 sq. ft
Included: Yes

Heated: Yes
Finished: Yes
Enclosed: Yes
Contiguous: Yes
Permitted: Yes
Wet space: No
Addition: No
Conversion: No