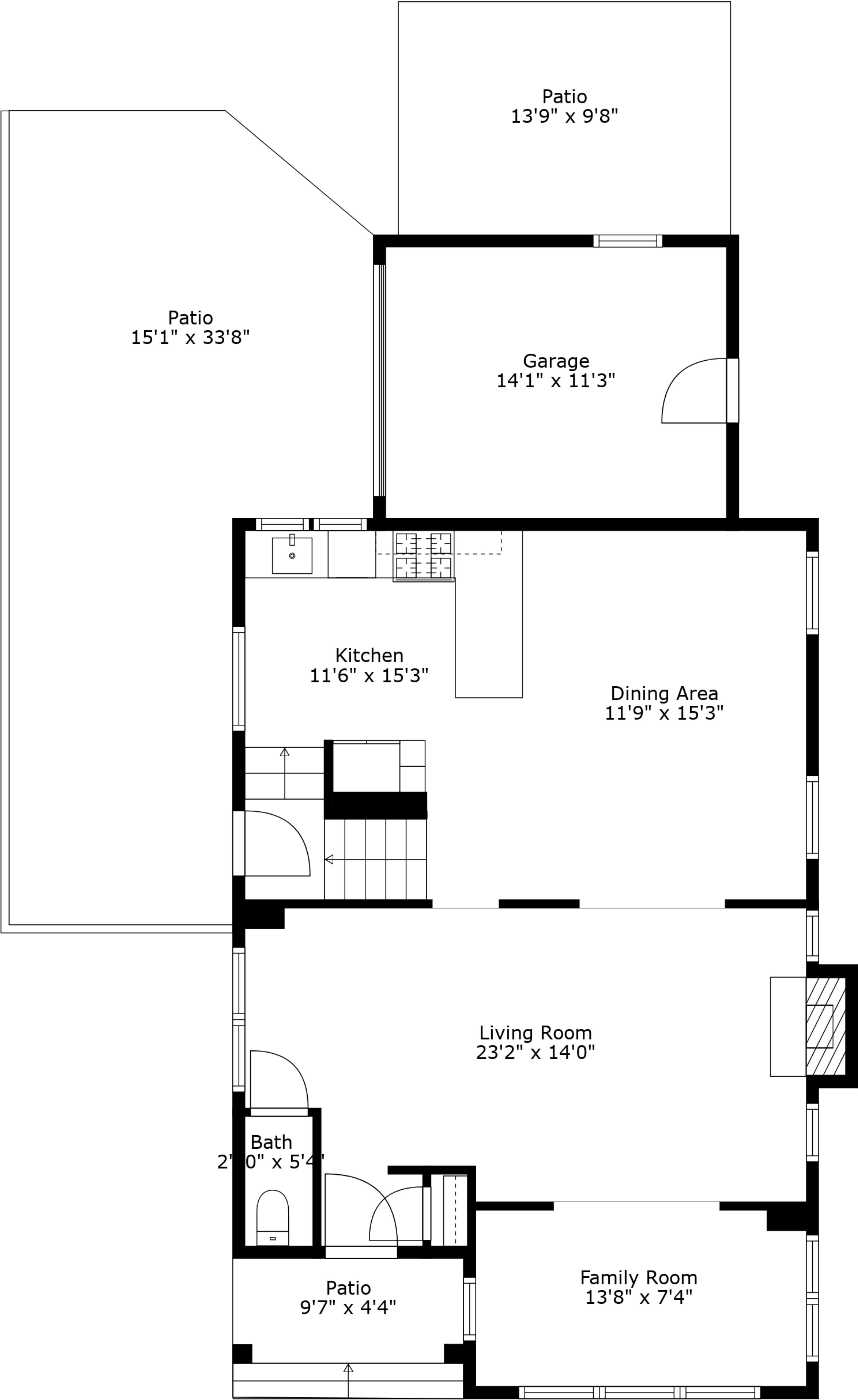


**TOTAL: 2049 sq. ft**

BELOW GROUND: 655 sq. ft, FLOOR 2: 770 sq. ft, FLOOR 3: 624 sq. ft, FLOOR 4: 0 sq. ft  
EXCLUDED AREAS: PATIO: 582 sq. ft, GARAGE: 158 sq. ft, FIREPLACE: 8 sq. ft,  
LOW CEILING: 140 sq. ft, ATTIC: 269 sq. ft, WALLS: 227 sq. ft

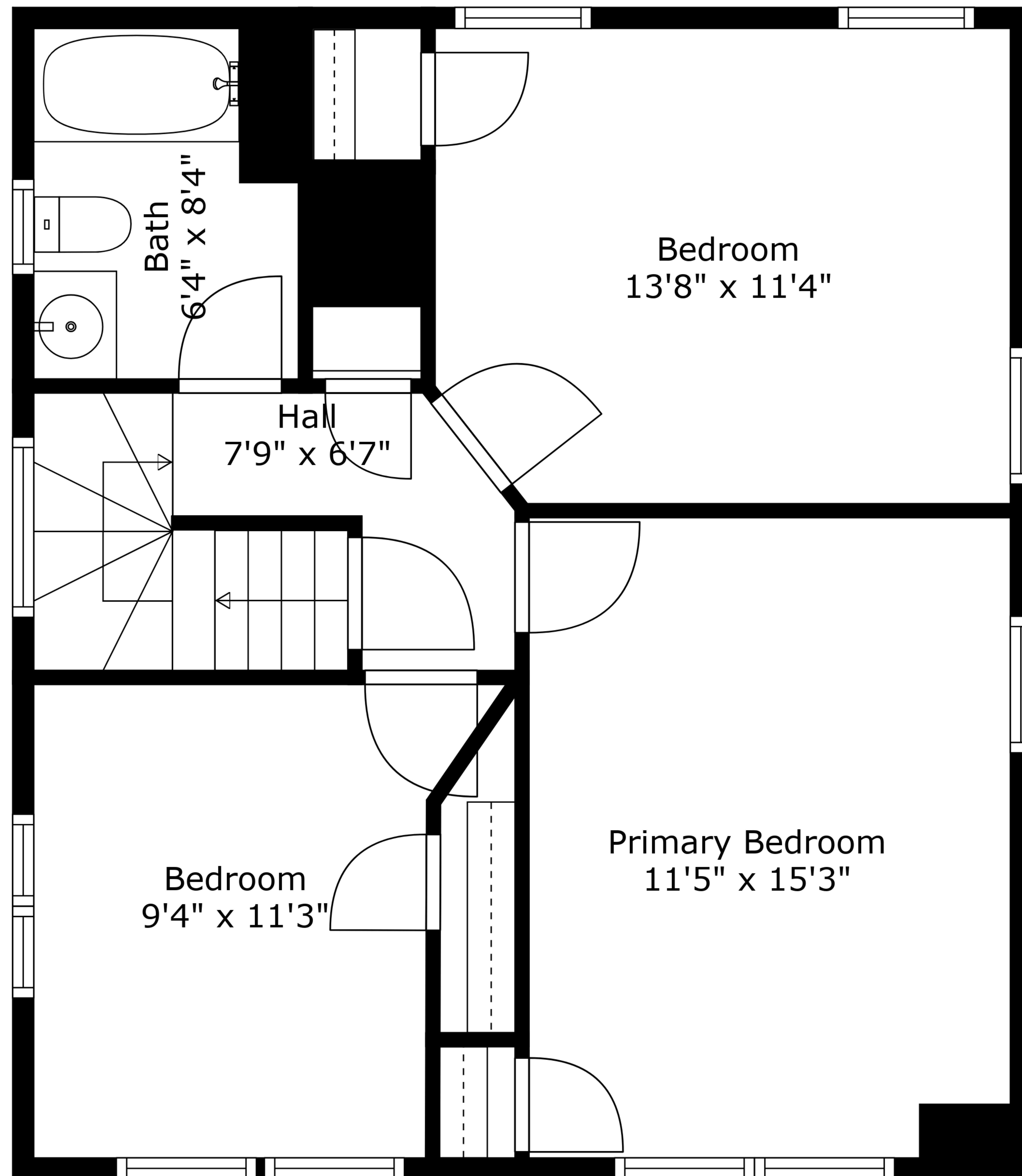
Measurements Are Approximate - Deemed Highly Reliable But Not Guaranteed



**TOTAL: 2049 sq. ft**

BELOW GROUND: 655 sq. ft, FLOOR 2: 770 sq. ft, FLOOR 3: 624 sq. ft, FLOOR 4: 0 sq. ft  
EXCLUDED AREAS: PATIO: 582 sq. ft, GARAGE: 158 sq. ft, FIREPLACE: 8 sq. ft,  
LOW CEILING: 140 sq. ft, ATTIC: 269 sq. ft, WALLS: 227 sq. ft

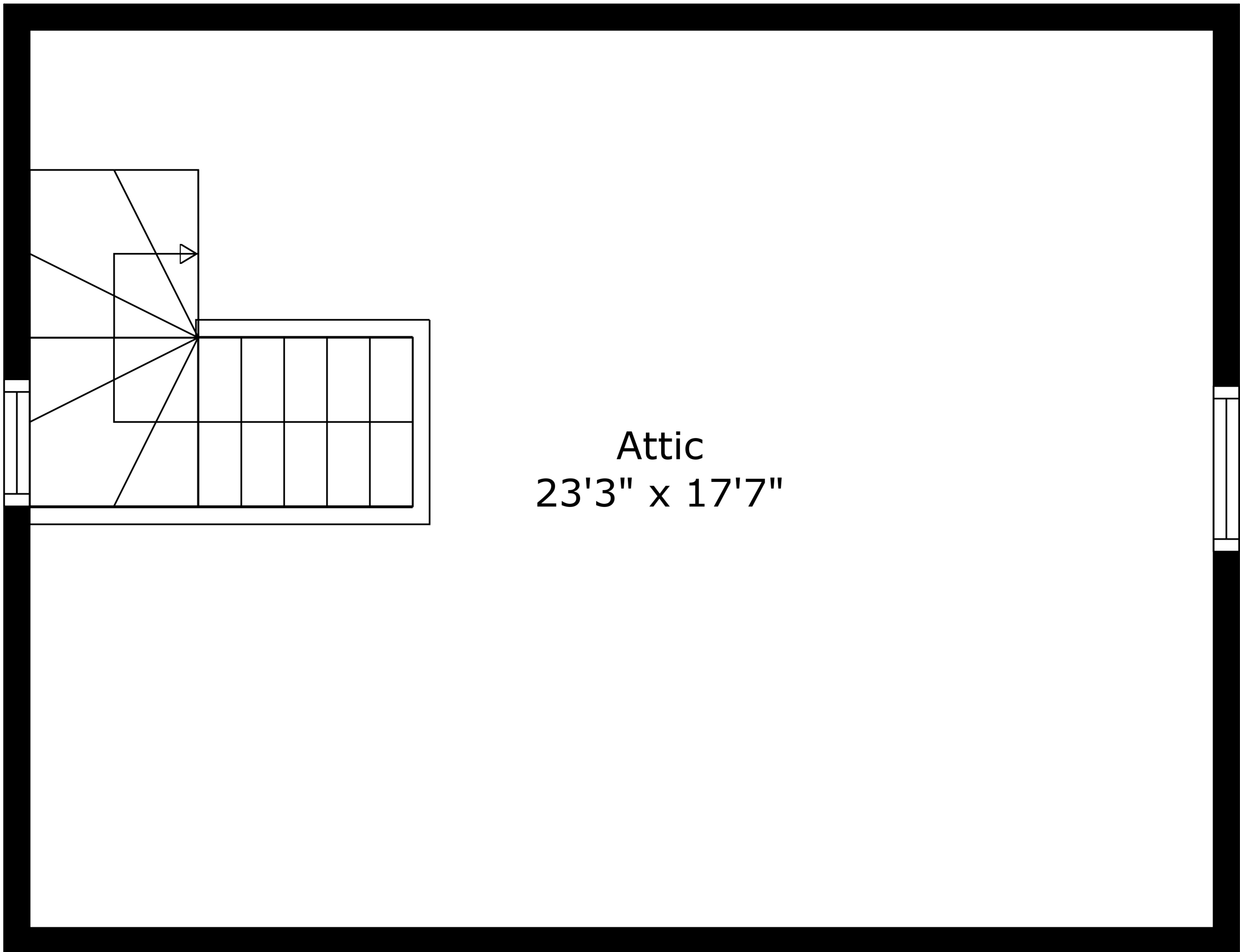
Measurements Are Approximate - Deemed Highly Reliable But Not Guaranteed



**TOTAL: 2049 sq. ft**

BELOW GROUND: 655 sq. ft, FLOOR 2: 770 sq. ft, FLOOR 3: 624 sq. ft, FLOOR 4: 0 sq. ft  
EXCLUDED AREAS: PATIO: 582 sq. ft, GARAGE: 158 sq. ft, FIREPLACE: 8 sq. ft,  
LOW CEILING: 140 sq. ft, ATTIC: 269 sq. ft, WALLS: 227 sq. ft

Measurements Are Approximate - Deemed Highly Reliable But Not Guaranteed

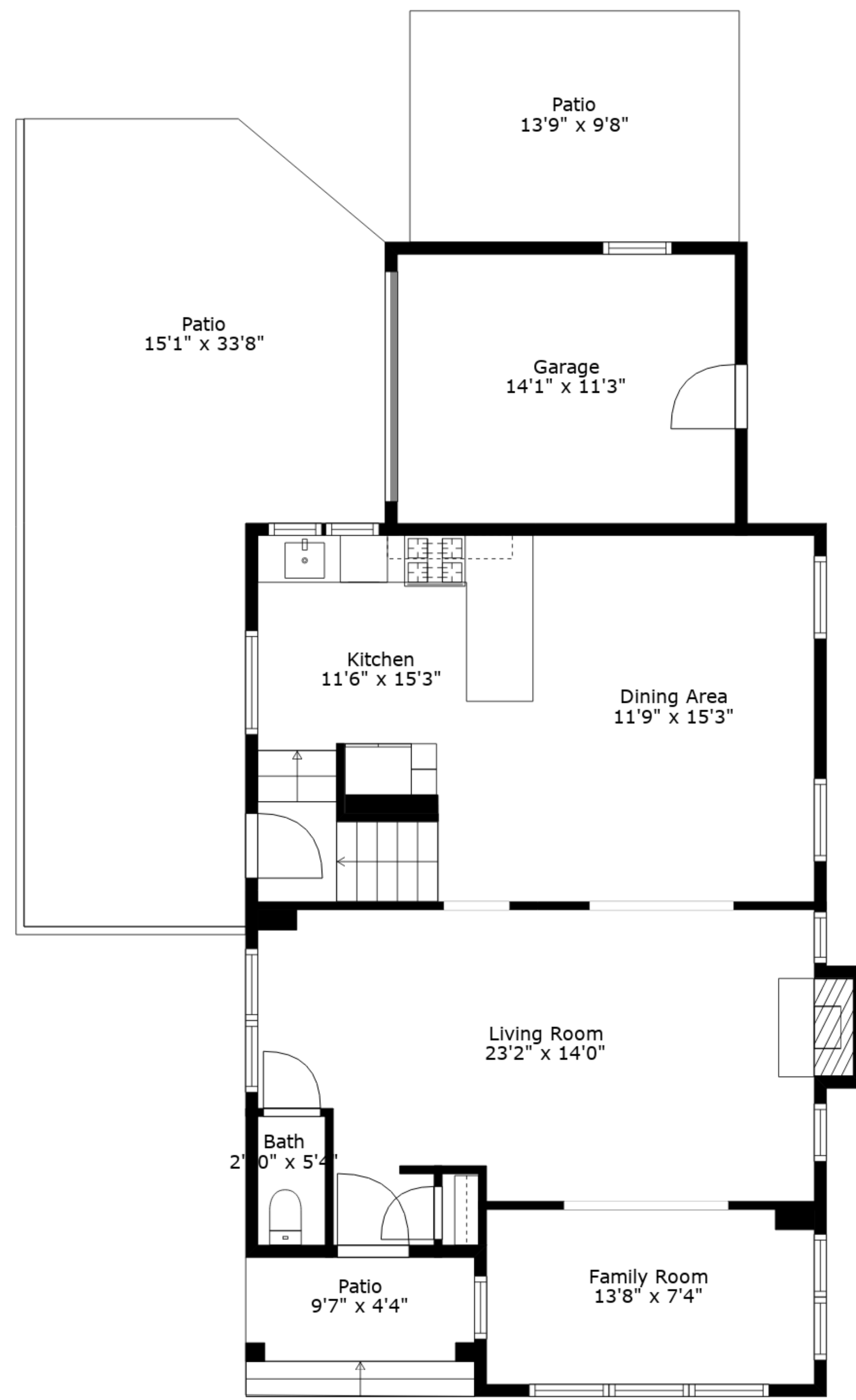


Attic  
23'3" x 17'7"

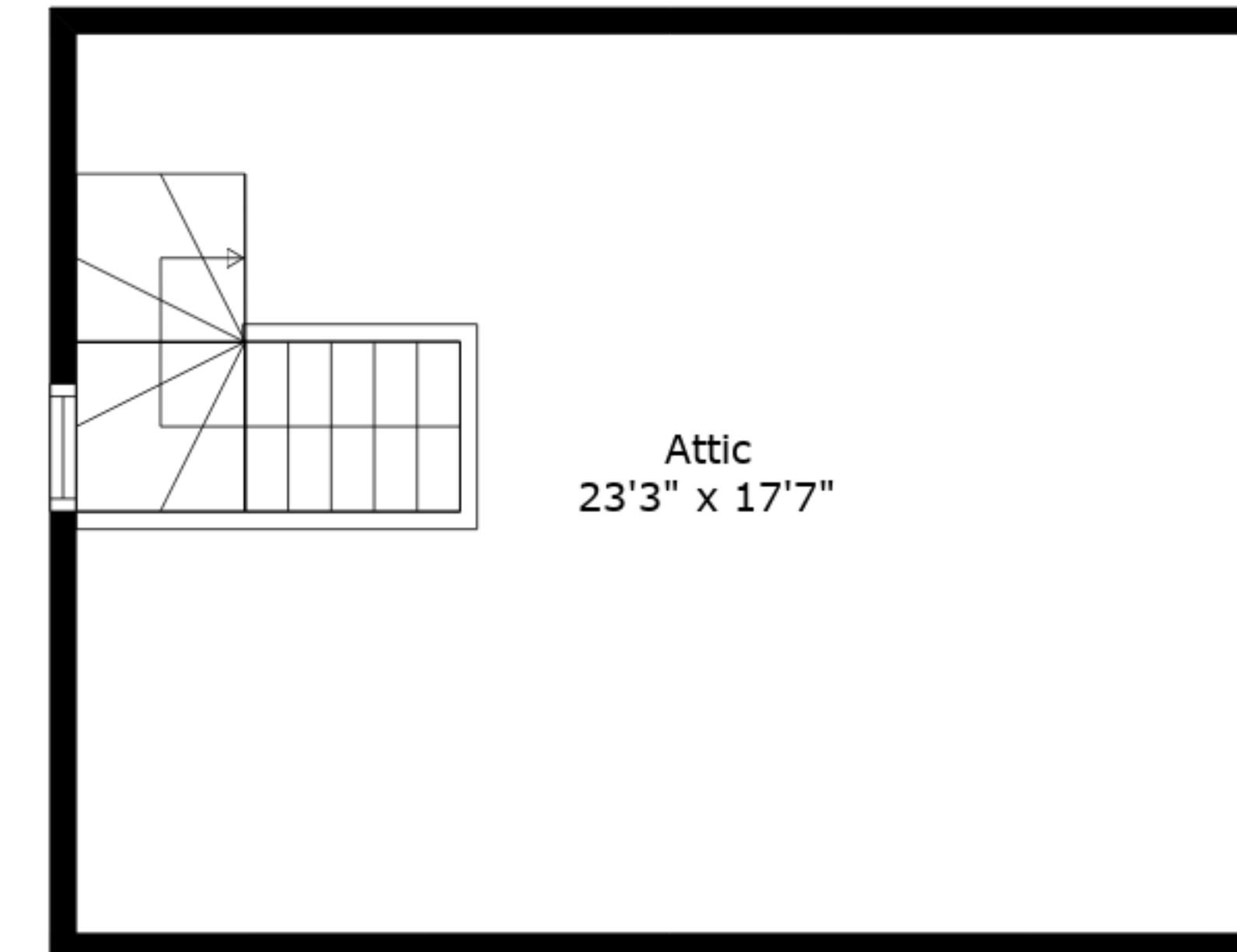
**TOTAL: 2049 sq. ft**

BELOW GROUND: 655 sq. ft, FLOOR 2: 770 sq. ft, FLOOR 3: 624 sq. ft, FLOOR 4: 0 sq. ft  
EXCLUDED AREAS: PATIO: 582 sq. ft, GARAGE: 158 sq. ft, FIREPLACE: 8 sq. ft,  
LOW CEILING: 140 sq. ft, ATTIC: 269 sq. ft, WALLS: 227 sq. ft

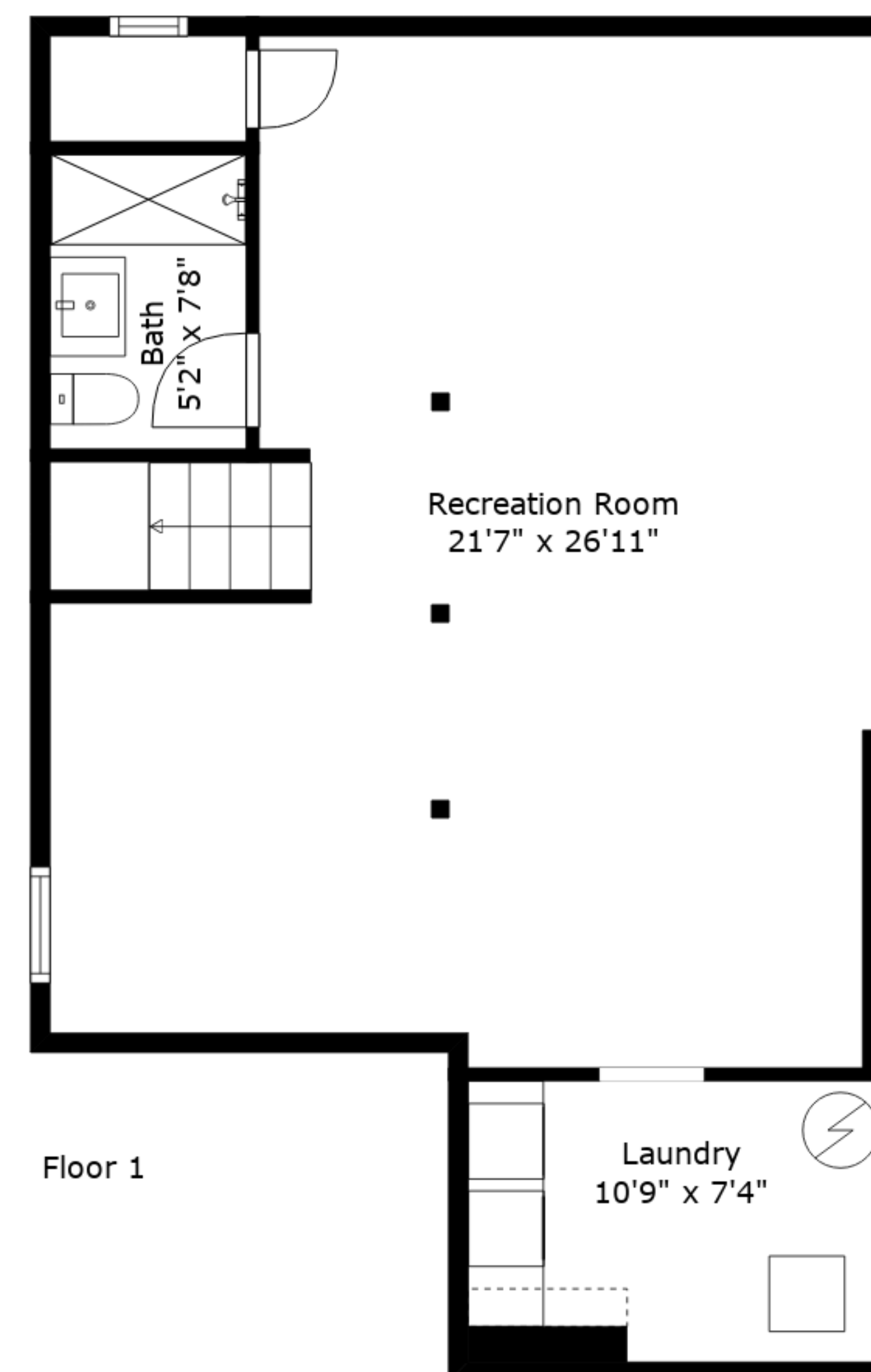
Measurements Are Approximate - Deemed Highly Reliable But Not Guaranteed



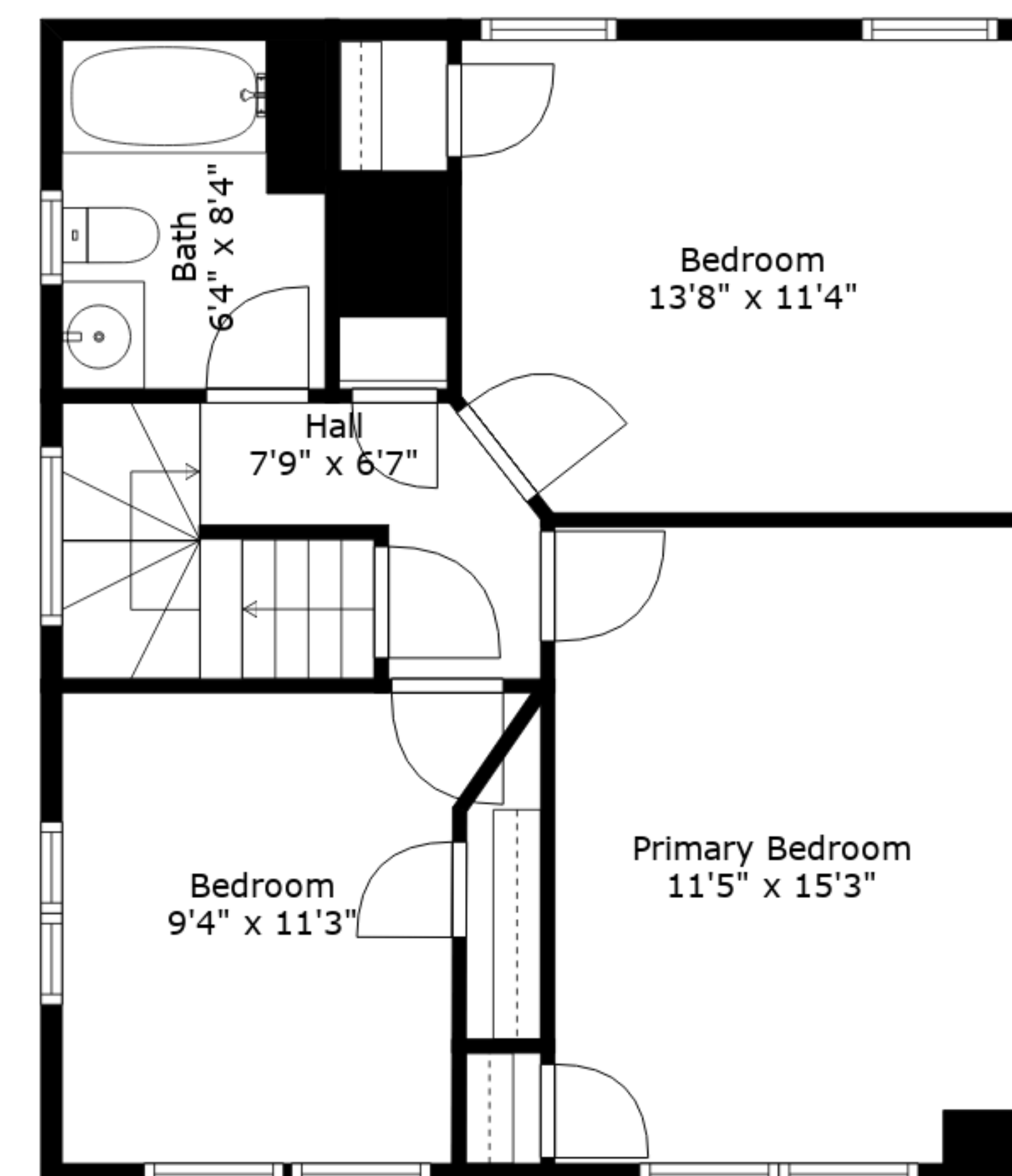
Floor 2



Floor 4



Floor 1



Floor 3

**TOTAL: 2049 sq. ft**

BELOW GROUND: 655 sq. ft, FLOOR 2: 770 sq. ft, FLOOR 3: 624 sq. ft, FLOOR 4: 0 sq. ft  
 EXCLUDED AREAS: PATIO: 582 sq. ft, GARAGE: 158 sq. ft, FIREPLACE: 8 sq. ft,  
 LOW CEILING: 140 sq. ft, ATTIC: 269 sq. ft, WALLS: 227 sq. ft

Measurements Are Approximate - Deemed Highly Reliable But Not Guaranteed