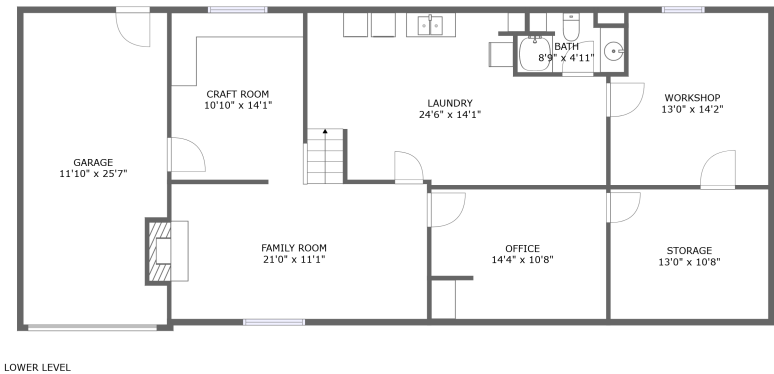




Home report

2027 Wynmere Drive, Cave Spring, Roanoke, Roanoke County, Virginia, United States, 24018




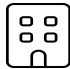
Property summary


 **1** Garages


 **4** Bedrooms

 **3** Bathrooms

 **0** Half baths

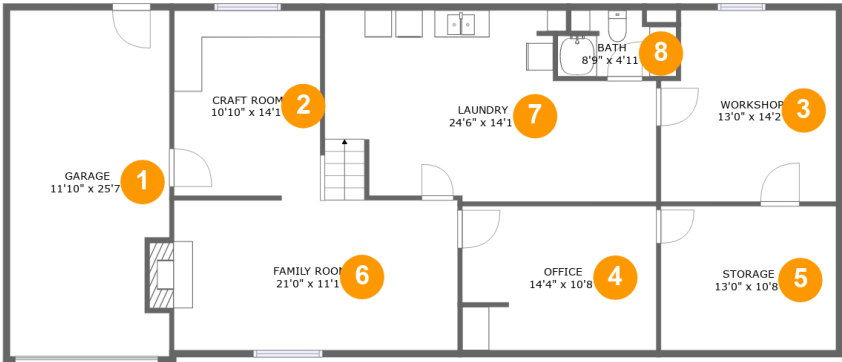
 **2** Floors

 **2,629** Gross living area sqft

 **3,322** Total sqft

Home report

2027 Wynmere Drive, Cave Spring, Roanoke, Roanoke County, Virginia, United States, 24018

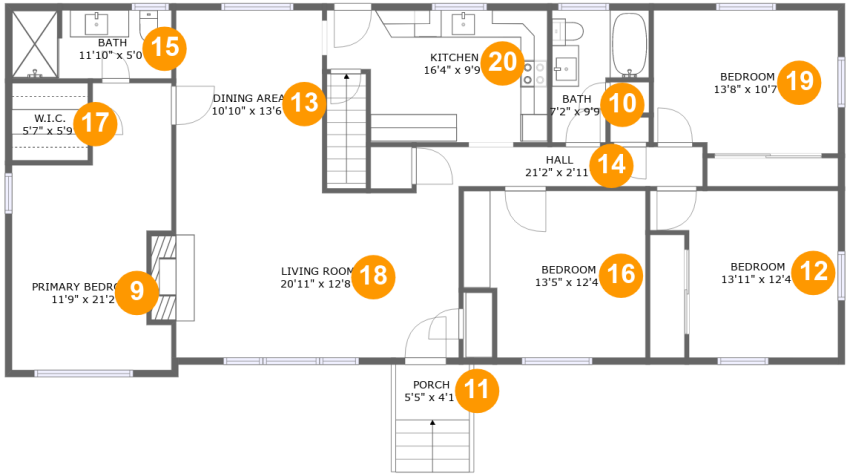


Room dimensions

Floor 1 Total sqft: 1630    Living area: 959

#		Dimensions	sqft	Counted as living area
1	Garage	11'10" x 25'7"	292 sq. ft	No
2	Craft Room	10'10" x 14'1"	150 sq. ft	Yes
3	Workshop	13'0" x 14'2"	176 sq. ft	No
4	Office	14'4" x 10'8"	152 sq. ft	Yes
5	Storage	13'0" x 10'8"	138 sq. ft	No
6	Family Room	21'0" x 11'1"	242 sq. ft	Yes
7	Laundry	24'6" x 14'1"	303 sq. ft	Yes
8	Bath	8'9" x 4'11"	37 sq. ft	Yes

2027 Wynmere Drive, Cave Spring, Roanoke, Roanoke County, Virginia, United States, 24018



Room dimensions

Floor 2 Total sqft: 1692    Living area: 1670

#		Dimensions	sqft	Counted as living area
9	Primary Bedroom	11'9" x 21'2"	202 sq. ft	Yes
10	Bath	7'2" x 9'9"	55 sq. ft	Yes
11	Porch	5'5" x 4'1"	22 sq. ft	No
12	Bedroom	13'11" x 12'4"	144 sq. ft	Yes
13	Dining Area	10'10" x 13'6"	146 sq. ft	Yes
14	Hall	21'2" x 2'11"	62 sq. ft	Yes
15	Bath	11'10" x 5'0"	59 sq. ft	Yes
16	Bedroom	13'5" x 12'4"	153 sq. ft	Yes
17	W.I.C.	5'7" x 5'9"	32 sq. ft	Yes
18	Living Room	20'11" x 12'8"	268 sq. ft	Yes
19	Bedroom	13'8" x 10'7"	141 sq. ft	Yes

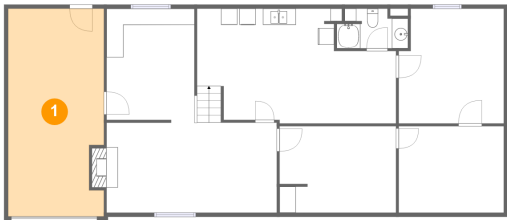
Home report

2027 Wynmere Drive, Cave Spring, Roanoke, Roanoke County,  
Virginia, United States, 24018

#		Dimensions	sqft	Counted as living area
20	Kitchen	16'4" x 9'9"	142 sq. ft	Yes

2027 Wynmere Drive, Cave Spring, Roanoke, Roanoke County,  
Virginia, United States, 24018

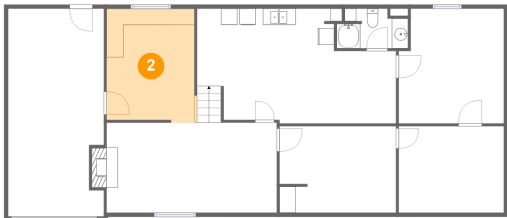
1 Floor 1 - Garage



Dimensions: 11'10" x 25'7"  
Area: 292 sq. ft  
Counted as living area: No

Heated: No  
Finished: No  
Enclosed: Yes  
Contiguous: Yes  
Permitted: Yes  
Wet space: No  
Addition: No  
Conversion: No

2 Floor 1 - Craft Room

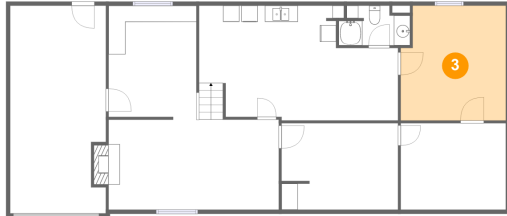


Dimensions: 10'10" x 14'1"  
Area: 150 sq. ft  
Counted as living area: Yes

Heated: Yes  
Finished: Yes  
Enclosed: Yes  
Contiguous: Yes  
Permitted: Yes  
Wet space: No  
Addition: No  
Conversion: No

2027 Wynmere Drive, Cave Spring, Roanoke, Roanoke County,  
Virginia, United States, 24018

### 3 Floor 1 - Workshop



Dimensions: 13'0" x 14'2"  
Area: 176 sq. ft  
Counted as living area: No

Heated: No  
Finished: No  
Enclosed: Yes  
Contiguous: No  
Permitted: Yes  
Wet space: No  
Addition: No  
Conversion: No

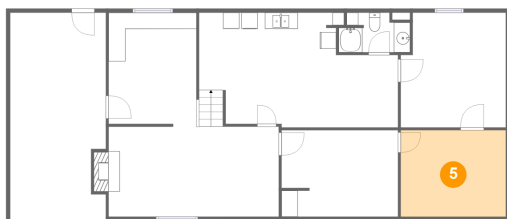
### 4 Floor 1 - Office



Dimensions: 14'4" x 10'8"  
Area: 152 sq. ft  
Counted as living area: Yes

Heated: Yes  
Finished: Yes  
Enclosed: Yes  
Contiguous: Yes  
Permitted: Yes  
Wet space: No  
Addition: No  
Conversion: No

### 5 Floor 1 - Storage

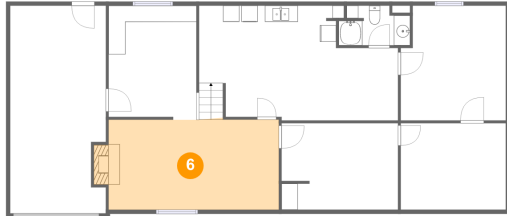


Dimensions: 13'0" x 10'8"  
Area: 138 sq. ft  
Counted as living area: No

Heated: No  
Finished: No  
Enclosed: No  
Contiguous: No  
Permitted: Yes  
Wet space: No  
Addition: No  
Conversion: No

2027 Wynmere Drive, Cave Spring, Roanoke, Roanoke County,  
Virginia, United States, 24018

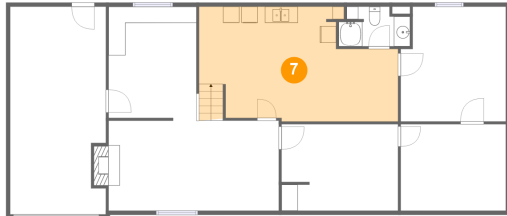
## 6 Floor 1 - Family Room



Dimensions: 21'0" x 11'1"  
Area: 242 sq. ft  
Counted as living area: Yes

Heated: Yes  
Finished: Yes  
Enclosed: Yes  
Contiguous: Yes  
Permitted: Yes  
Wet space: No  
Addition: No  
Conversion: No

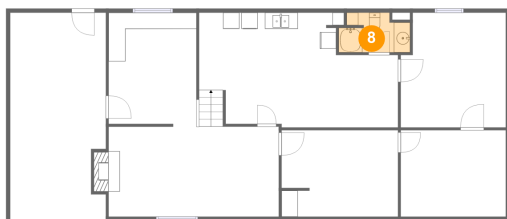
## 7 Floor 1 - Laundry



Dimensions: 24'6" x 14'1"  
Area: 303 sq. ft  
Counted as living area: Yes

Heated: Yes  
Finished: Yes  
Enclosed: Yes  
Contiguous: Yes  
Permitted: Yes  
Wet space: No  
Addition: No  
Conversion: No

## 8 Floor 1 - Bath



Dimensions: 8'9" x 4'11"  
Area: 37 sq. ft  
Counted as living area: Yes

Heated: Yes  
Finished: Yes  
Enclosed: Yes  
Contiguous: Yes  
Permitted: Yes  
Wet space: Yes  
Addition: No  
Conversion: No

2027 Wynmere Drive, Cave Spring, Roanoke, Roanoke County,  
Virginia, United States, 24018

## 9 Floor 2 - Primary Bedroom



Dimensions: 11'9" x 21'2"  
Area: 202 sq. ft  
Counted as living area: Yes

Heated: Yes  
Finished: Yes  
Enclosed: Yes  
Contiguous: Yes  
Permitted: Yes  
Wet space: No  
Addition: No  
Conversion: No

## 10 Floor 2 - Bath



Dimensions: 7'2" x 9'9"  
Area: 55 sq. ft  
Counted as living area: Yes

Heated: Yes  
Finished: Yes  
Enclosed: Yes  
Contiguous: Yes  
Permitted: Yes  
Wet space: Yes  
Addition: No  
Conversion: No

## 11 Floor 2 - Porch



Dimensions: 5'5" x 4'1"  
Area: 22 sq. ft  
Counted as living area: No

Heated: No  
Finished: Yes  
Enclosed: No  
Contiguous: Yes  
Permitted: Yes  
Wet space: No  
Addition: No  
Conversion: No



2027 Wynmere Drive, Cave Spring, Roanoke, Roanoke County,  
Virginia, United States, 24018

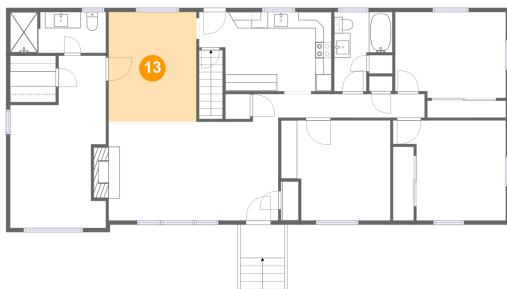
## 12 Floor 2 - Bedroom



Dimensions: 13'11" x 12'4"  
Area: 144 sq. ft  
Counted as living area: Yes

Heated: Yes  
Finished: Yes  
Enclosed: Yes  
Contiguous: Yes  
Permitted: Yes  
Wet space: No  
Addition: No  
Conversion: No

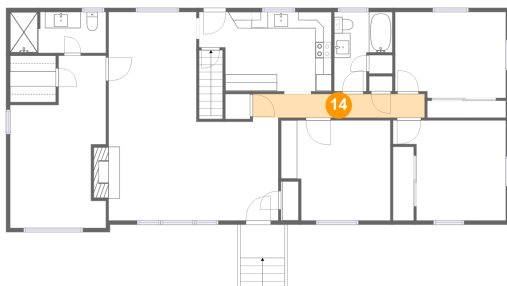
## 13 Floor 2 - Dining Area



Dimensions: 10'10" x 13'6"  
Area: 146 sq. ft  
Counted as living area: Yes

Heated: Yes  
Finished: Yes  
Enclosed: Yes  
Contiguous: Yes  
Permitted: Yes  
Wet space: No  
Addition: No  
Conversion: No

## 14 Floor 2 - Hall



Dimensions: 21'2" x 2'11"  
Area: 62 sq. ft  
Counted as living area: Yes

Heated: Yes  
Finished: Yes  
Enclosed: Yes  
Contiguous: Yes  
Permitted: Yes  
Wet space: No  
Addition: No  
Conversion: No

2027 Wynmere Drive, Cave Spring, Roanoke, Roanoke County,  
Virginia, United States, 24018

**15** Floor 2 - Bath



Dimensions: 11'10" x 5'0"  
Area: 59 sq. ft  
Counted as living area: Yes

Heated: Yes  
Finished: Yes  
Enclosed: Yes  
Contiguous: Yes  
Permitted: Yes  
Wet space: Yes  
Addition: No  
Conversion: No

**16** Floor 2 - Bedroom



Dimensions: 13'5" x 12'4"  
Area: 153 sq. ft  
Counted as living area: Yes

Heated: Yes  
Finished: Yes  
Enclosed: Yes  
Contiguous: Yes  
Permitted: Yes  
Wet space: No  
Addition: No  
Conversion: No

**17** Floor 2 - W.I.C.



Dimensions: 5'7" x 5'9"  
Area: 32 sq. ft  
Counted as living area: Yes

Heated: Yes  
Finished: Yes  
Enclosed: Yes  
Contiguous: Yes  
Permitted: Yes  
Wet space: No  
Addition: No  
Conversion: No

2027 Wynmere Drive, Cave Spring, Roanoke, Roanoke County,  
Virginia, United States, 24018

## 18 Floor 2 - Living Room



Dimensions: 20'11" x 12'8"  
Area: 268 sq. ft  
Counted as living area: Yes

Heated: Yes  
Finished: Yes  
Enclosed: Yes  
Contiguous: Yes  
Permitted: Yes  
Wet space: No  
Addition: No  
Conversion: No

## 19 Floor 2 - Bedroom



Dimensions: 13'8" x 10'7"  
Area: 141 sq. ft  
Counted as living area: Yes

Heated: Yes  
Finished: Yes  
Enclosed: Yes  
Contiguous: Yes  
Permitted: Yes  
Wet space: No  
Addition: No  
Conversion: No

## 20 Floor 2 - Kitchen



Dimensions: 16'4" x 9'9"  
Area: 142 sq. ft  
Counted as living area: Yes

Heated: Yes  
Finished: Yes  
Enclosed: Yes  
Contiguous: Yes  
Permitted: Yes  
Wet space: No  
Addition: No  
Conversion: No