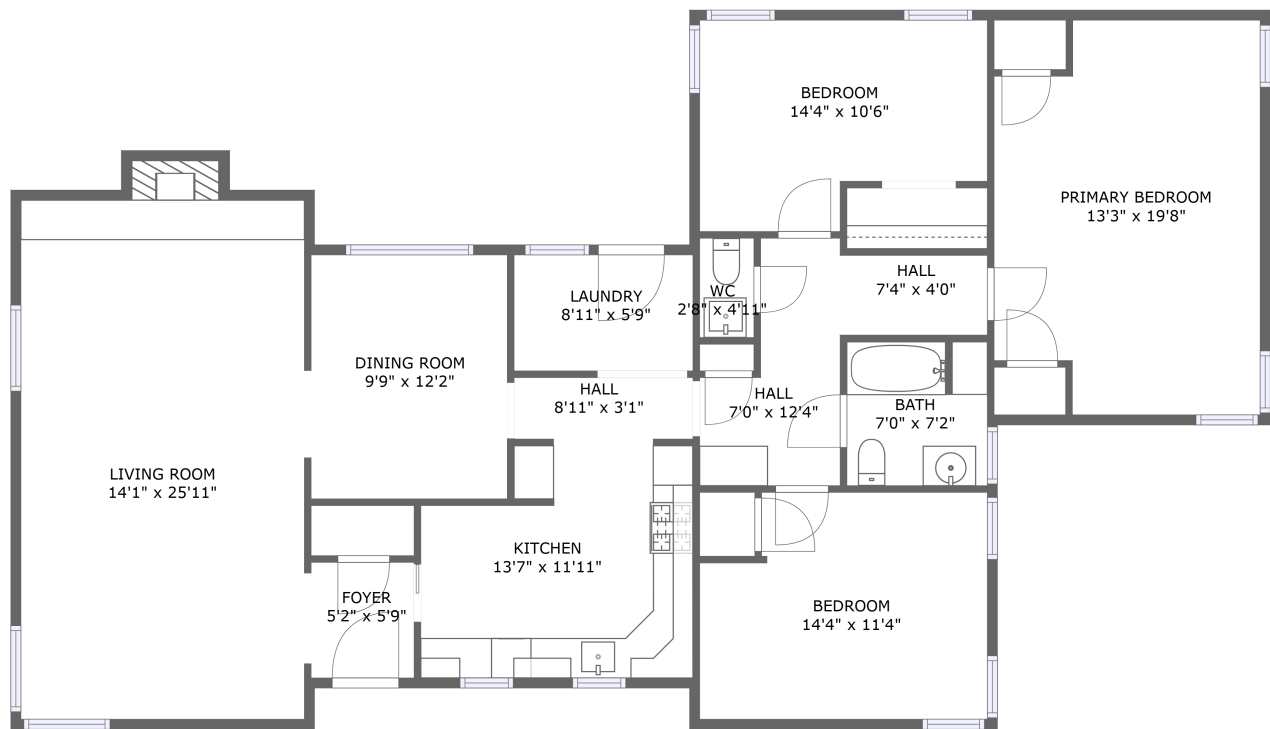


Home report

215 E 18th St,Bartlesville,OK,US



FLOOR 1


Total Area: 1552 sq. ft

Floor 1: 1552 sq. ft

Excluded: Fireplace 11 sq. ft, Walls: 100 sq. ft

Property summary

 1 Floors

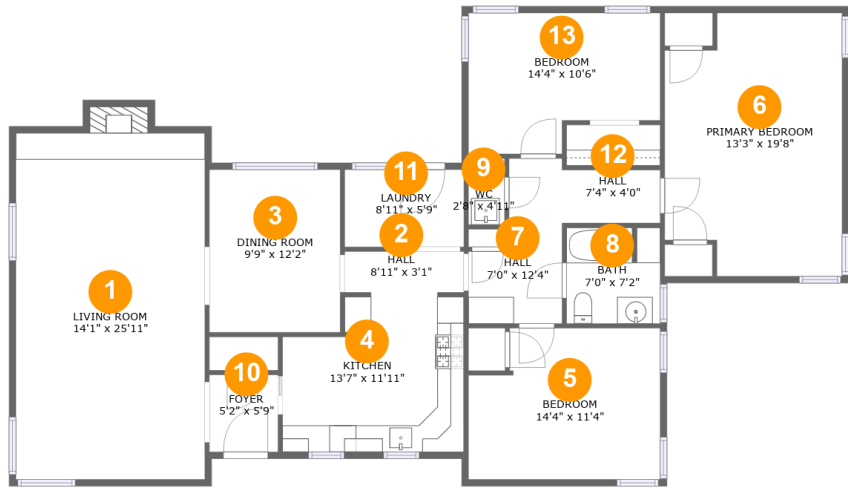
 3 Bedrooms

 1 Bathrooms

 1 Half baths

Home report

215 E 18th St,Bartlesville,OK,US



Room dimensions

Floor 1 Total:1552sqft Excluded: 11sqft

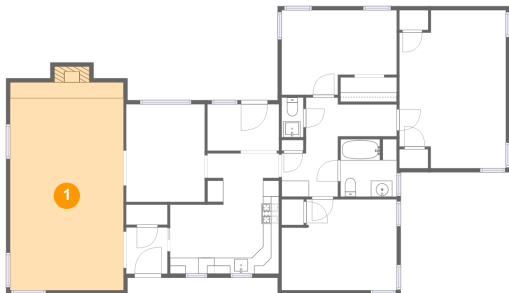
#		Max Dimensions	sqft	Included
1	Living Room	14'1" x 25'11"	375 sq. ft	Yes
2	Hall	8'11" x 3'1"	27 sq. ft	Yes
3	Dining Room	9'9" x 12'2"	119 sq. ft	Yes
4	Kitchen	13'7" x 11'11"	144 sq. ft	Yes
5	Bedroom	14'4" x 11'4"	151 sq. ft	Yes
6	Primary Bedroom	13'3" x 19'8"	240 sq. ft	Yes
7	Hall	7'0" x 12'4"	65 sq. ft	Yes
8	Bath	7'0" x 7'2"	49 sq. ft	Yes
9	WC	2'8" x 4'11"	13 sq. ft	Yes
10	Foyer	5'2" x 5'9"	30 sq. ft	Yes
11	Laundry	8'11" x 5'9"	52 sq. ft	Yes

Home report

215 E 18th St,Bartlesville,OK,US

#		Max Dimensions	sqft	Included
12	Hall	7'4" x 4'0"	29 sq. ft	Yes
13	Bedroom	14'4" x 10'6"	133 sq. ft	Yes

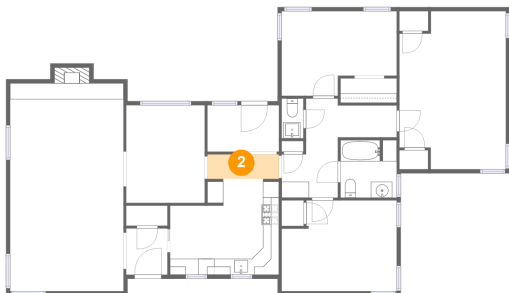
1 Floor 1 - Living Room



Max Dimensions: 14'1" x 25'11"  
Calculated Area: 375 sq. ft  
Included: Yes

Heated: Yes  
Finished: Yes  
Enclosed: Yes  
Contiguous: Yes  
Permitted: Yes  
Wet space: No  
Addition: No  
Conversion: No

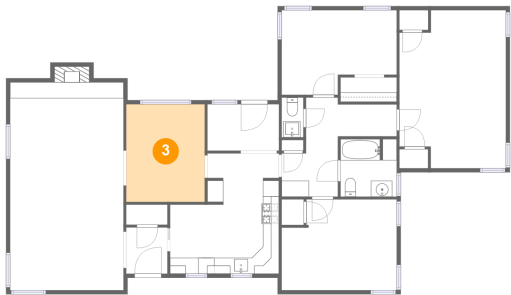
2 Floor 1 - Hall



Max Dimensions: 8'11" x 3'1"  
Calculated Area: 27 sq. ft  
Included: Yes

Heated: Yes  
Finished: Yes  
Enclosed: Yes  
Contiguous: Yes  
Permitted: Yes  
Wet space: No  
Addition: No  
Conversion: No

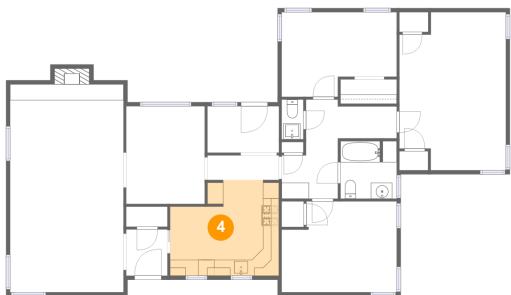
3 Floor 1 - Dining Room



Max Dimensions: 9'9" x 12'2"  
Calculated Area: 119 sq. ft  
Included: Yes

Heated: Yes  
Finished: Yes  
Enclosed: Yes  
Contiguous: Yes  
Permitted: Yes  
Wet space: No  
Addition: No  
Conversion: No

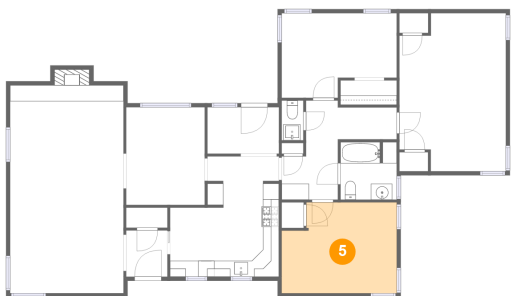
4 Floor 1 - Kitchen



Max Dimensions: 13'7" x 11'11"  
Calculated Area: 144 sq. ft  
Included: Yes

Heated: Yes  
Finished: Yes  
Enclosed: Yes  
Contiguous: Yes  
Permitted: Yes  
Wet space: No  
Addition: No  
Conversion: No

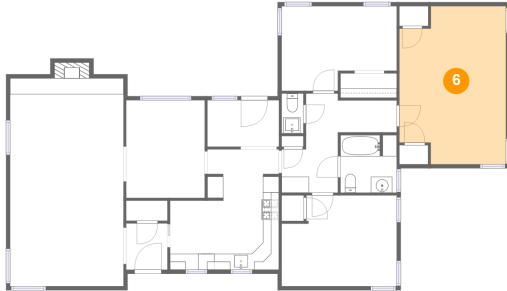
5 Floor 1 - Bedroom



Max Dimensions: 14'4" x 11'4"  
Calculated Area: 151 sq. ft  
Included: Yes

Heated: Yes  
Finished: Yes  
Enclosed: Yes  
Contiguous: Yes  
Permitted: Yes  
Wet space: No  
Addition: No  
Conversion: No

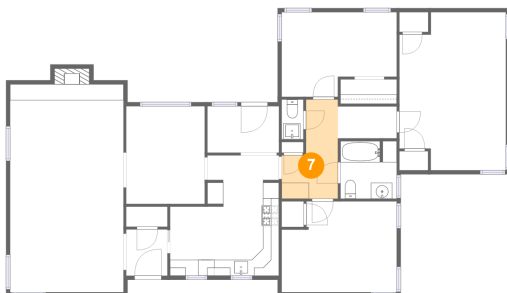
## 6 Floor 1 - Primary Bedroom



Max Dimensions: 13'3" x 19'8"  
Calculated Area: 240 sq. ft  
Included: Yes

Heated: Yes  
Finished: Yes  
Enclosed: Yes  
Contiguous: Yes  
Permitted: Yes  
Wet space: No  
Addition: No  
Conversion: No

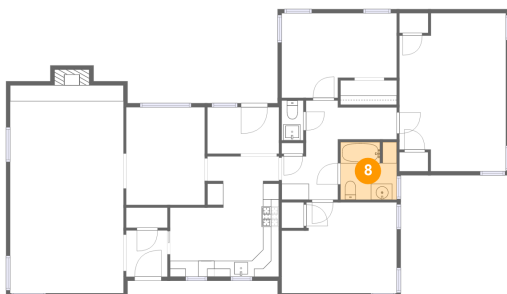
## 7 Floor 1 - Hall



Max Dimensions: 7'0" x 12'4"  
Calculated Area: 65 sq. ft  
Included: Yes

Heated: Yes  
Finished: Yes  
Enclosed: Yes  
Contiguous: Yes  
Permitted: Yes  
Wet space: No  
Addition: No  
Conversion: No

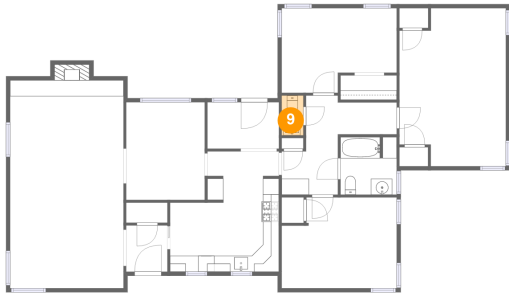
## 8 Floor 1 - Bath



Max Dimensions: 7'0" x 7'2"  
Calculated Area: 49 sq. ft  
Included: Yes

Heated: Yes  
Finished: Yes  
Enclosed: Yes  
Contiguous: Yes  
Permitted: Yes  
Wet space: Yes  
Addition: No  
Conversion: No

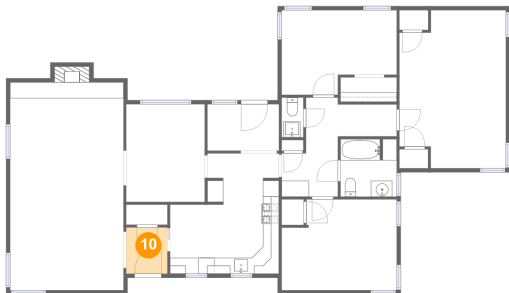
9 Floor 1 - WC



Max Dimensions: 2'8" x 4'11"  
Calculated Area: 13 sq. ft  
Included: Yes

Heated: Yes  
Finished: Yes  
Enclosed: Yes  
Contiguous: Yes  
Permitted: Yes  
Wet space: Yes  
Addition: No  
Conversion: No

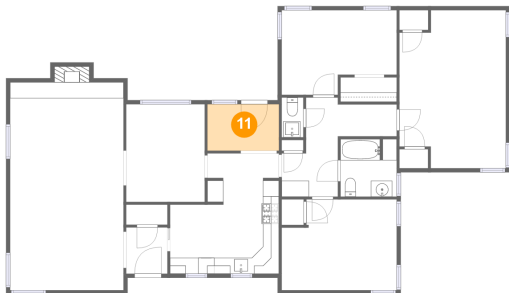
10 Floor 1 - Foyer



Max Dimensions: 5'2" x 5'9"  
Calculated Area: 30 sq. ft  
Included: Yes

Heated: Yes  
Finished: Yes  
Enclosed: Yes  
Contiguous: Yes  
Permitted: Yes  
Wet space: No  
Addition: No  
Conversion: No

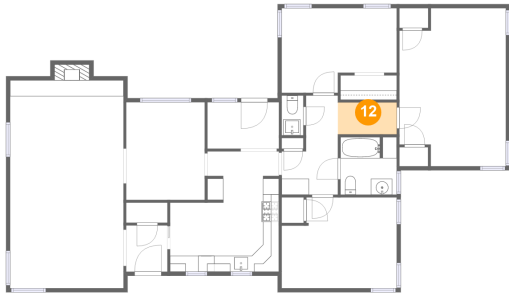
11 Floor 1 - Laundry



Max Dimensions: 8'11" x 5'9"  
Calculated Area: 52 sq. ft  
Included: Yes

Heated: Yes  
Finished: Yes  
Enclosed: Yes  
Contiguous: Yes  
Permitted: Yes  
Wet space: No  
Addition: No  
Conversion: No

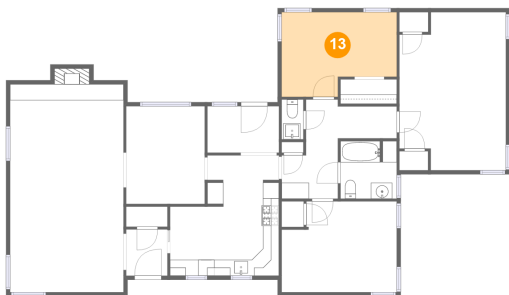
12 Floor 1 - Hall



Max Dimensions: 7'4" x 4'0"  
Calculated Area: 29 sq. ft  
Included: Yes

Heated: Yes  
Finished: Yes  
Enclosed: Yes  
Contiguous: Yes  
Permitted: Yes  
Wet space: No  
Addition: No  
Conversion: No

13 Floor 1 - Bedroom



Max Dimensions: 14'4" x 10'6"  
Calculated Area: 133 sq. ft  
Included: Yes

Heated: Yes  
Finished: Yes  
Enclosed: Yes  
Contiguous: Yes  
Permitted: Yes  
Wet space: No  
Addition: No  
Conversion: No