

Home data report

11279 Black Forest Rd,Lead,SD,US

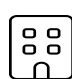


**Total Area: 3550 sq. ft**

1st Floor: 3550 sq. ft

Excluded: Patio 435 sq. ft, Covered patio 150 sq. ft, Porch 146 sq. ft, Walls: 163 sq. ft

Property summary

 **1** Floors

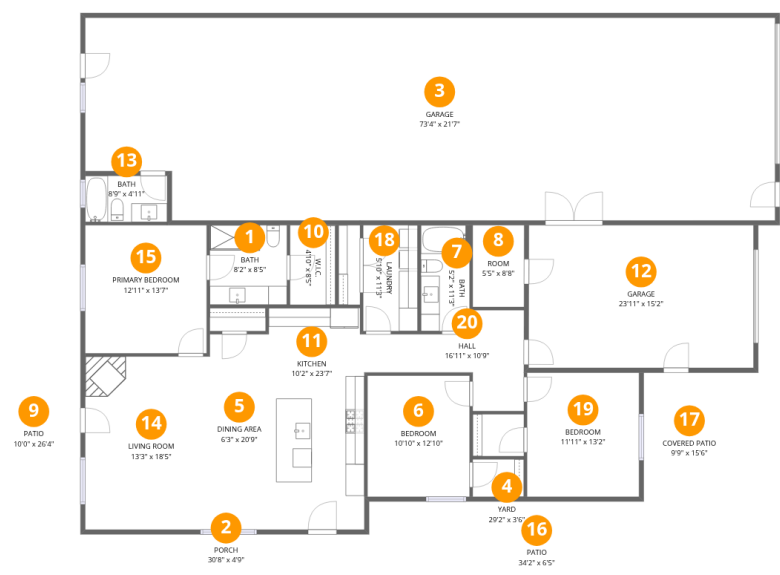
 **3** Bedrooms

 **3** Bathrooms

 **2** Garages

Home data report

11279 Black Forest Rd,Lead,SD,US



Room dimensions

Floor 1 Total:3550sqft Excluded: 731sqft

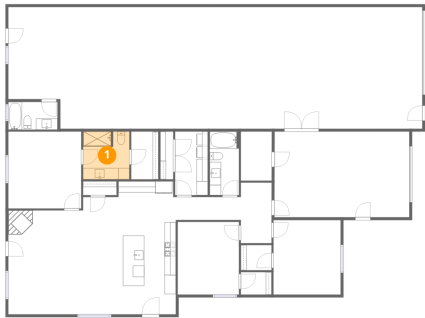
#		Dimensions	sqft	Counted as living area
1	Bath	8'2" x 8'5"	68 sq. ft	Yes
2	Porch	30'8" x 4'9"	146 sq. ft	No
3	Garage	73'4" x 21'7"	1532 sq. ft	Yes
4	Yard	29'2" x 3'6"	102 sq. ft	No
5	Dining Area	6'3" x 20'9"	130 sq. ft	Yes
6	Bedroom	10'10" x 12'10"	140 sq. ft	Yes
7	Bath	5'2" x 11'3"	58 sq. ft	Yes
8	Room	5'5" x 8'8"	47 sq. ft	Yes
9	Patio	10'0" x 26'4"	264 sq. ft	No
10	W.I.C.	4'10" x 8'5"	41 sq. ft	Yes
11	Kitchen	10'2" x 23'7"	238 sq. ft	Yes

## Home data report

# 11279 Black Forest Rd,Lead,SD,US

#		Dimensions	sqft	Counted as living area
12	Garage	23'11" x 15'2"	362 sq. ft	Yes
13	Bath	8'9" x 4'11"	43 sq. ft	Yes
14	Living Room	13'3" x 18'5"	244 sq. ft	Yes
15	Primary Bedroom	12'11" x 13'7"	176 sq. ft	Yes
16	Patio	34'2" x 6'5"	171 sq. ft	No
17	Covered Patio	9'9" x 15'6"	150 sq. ft	No
18	Laundry	5'10" x 11'3"	65 sq. ft	Yes
19	Bedroom	11'11" x 13'2"	157 sq. ft	Yes
20	Hall	16'11" x 10'9"	105 sq. ft	Yes

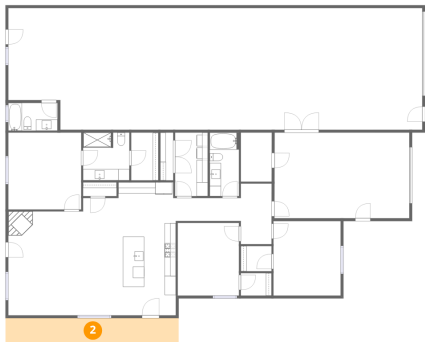
1 Floor 1 - Bath



Dimensions: 8'2" x 8'5"  
Area: 68 sq. ft  
Counted as living area: Yes

Heated: Yes  
Finished: Yes  
Enclosed: Yes  
Contiguous: Yes  
Permitted: Yes  
Wet space: Yes  
Addition: No  
Conversion: No

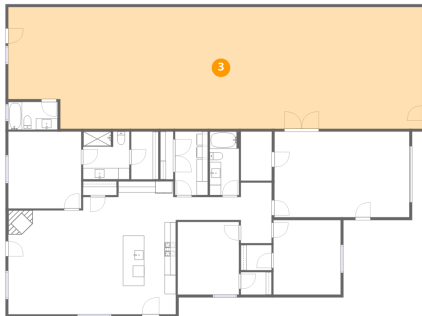
2 Floor 1 - Porch



Dimensions: 30'8" x 4'9"  
Area: 146 sq. ft  
Counted as living area: No

Heated: No  
Finished: No  
Enclosed: No  
Contiguous: Yes  
Permitted: Yes  
Wet space: No  
Addition: No  
Conversion: No

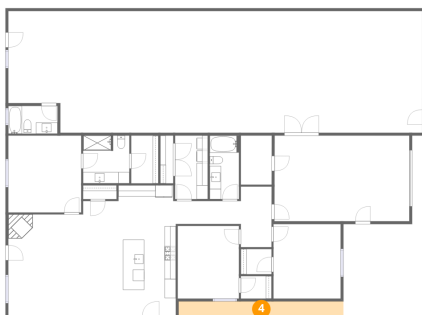
### 3 Floor 1 - Garage



Dimensions: 73'4" x 21'7"  
Area: 1532 sq. ft  
Counted as living area: No

Heated: No  
Finished: Yes  
Enclosed: Yes  
Contiguous: Yes  
Permitted: Yes  
Wet space: No  
Addition: No  
Conversion: No

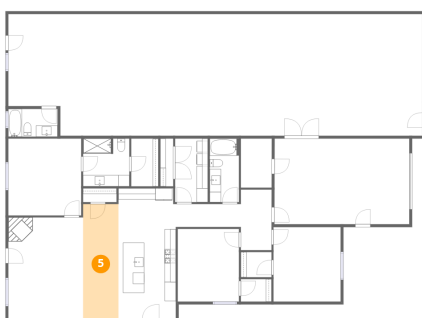
### 4 Floor 1 - Yard



Dimensions: 29'2" x 3'6"  
Area: 102 sq. ft  
Counted as living area: No

Heated: No  
Finished: No  
Enclosed: No  
Contiguous: Yes  
Permitted: No  
Wet space: No  
Addition: No  
Conversion: No

### 5 Floor 1 - Dining Area



Dimensions: 6'3" x 20'9"  
Area: 130 sq. ft  
Counted as living area: Yes

Heated: Yes  
Finished: Yes  
Enclosed: Yes  
Contiguous: Yes  
Permitted: Yes  
Wet space: No  
Addition: No  
Conversion: No

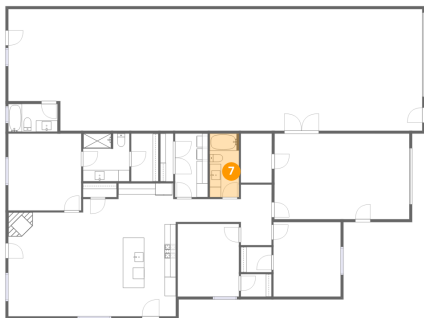
6 Floor 1 - Bedroom



Dimensions: 10'10" x 12'10"  
Area: 140 sq. ft  
Counted as living area: Yes

Heated: Yes  
Finished: Yes  
Enclosed: Yes  
Contiguous: Yes  
Permitted: Yes  
Wet space: No  
Addition: No  
Conversion: No

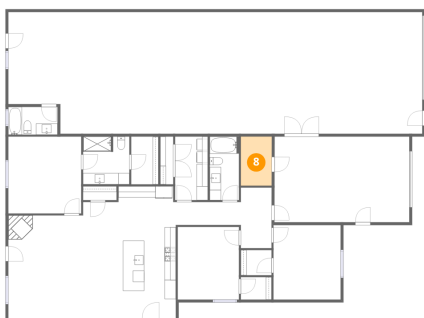
7 Floor 1 - Bath



Dimensions: 5'2" x 11'3"  
Area: 58 sq. ft  
Counted as living area: Yes

Heated: Yes  
Finished: Yes  
Enclosed: Yes  
Contiguous: Yes  
Permitted: Yes  
Wet space: Yes  
Addition: No  
Conversion: No

8 Floor 1 - Room



Dimensions: 5'5" x 8'8"  
Area: 47 sq. ft  
Counted as living area: No

Heated: Yes  
Finished: Yes  
Enclosed: Yes  
Contiguous: No  
Permitted: Yes  
Wet space: No  
Addition: No  
Conversion: No

9 Floor 1 - Patio



Dimensions: 10'0" x 26'4"  
Area: 264 sq. ft  
Counted as living area: No

Heated: No  
Finished: No  
Enclosed: No  
Contiguous: Yes  
Permitted: Yes  
Wet space: No  
Addition: No  
Conversion: No

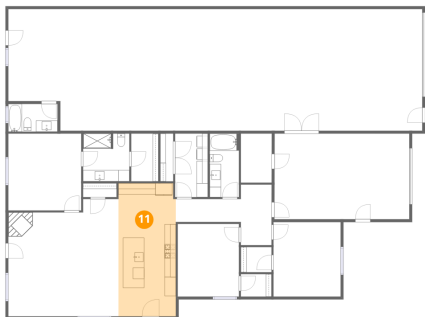
10 Floor 1 - W.I.C.



Dimensions: 4'10" x 8'5"  
Area: 41 sq. ft  
Counted as living area: Yes

Heated: Yes  
Finished: Yes  
Enclosed: Yes  
Contiguous: Yes  
Permitted: Yes  
Wet space: No  
Addition: No  
Conversion: No

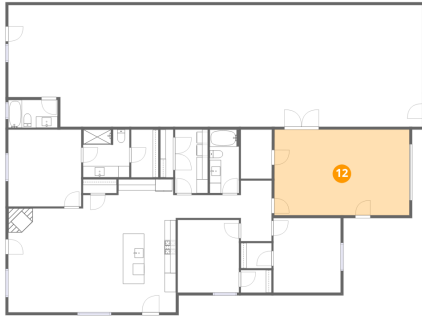
11 Floor 1 - Kitchen



Dimensions: 10'2" x 23'7"  
Area: 238 sq. ft  
Counted as living area: Yes

Heated: Yes  
Finished: Yes  
Enclosed: Yes  
Contiguous: Yes  
Permitted: Yes  
Wet space: No  
Addition: No  
Conversion: No

## 12 Floor 1 - Garage



Dimensions: 23'11" x 15'2"  
Area: 362 sq. ft  
Counted as living area: No

Heated: No  
Finished: Yes  
Enclosed: Yes  
Contiguous: Yes  
Permitted: Yes  
Wet space: No  
Addition: No  
Conversion: No

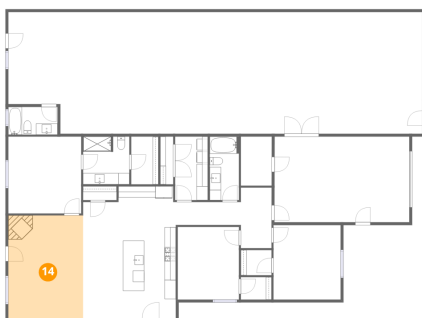
## 13 Floor 1 - Bath



Dimensions: 8'9" x 4'11"  
Area: 43 sq. ft  
Counted as living area: Yes

Heated: Yes  
Finished: Yes  
Enclosed: Yes  
Contiguous: Yes  
Permitted: Yes  
Wet space: Yes  
Addition: No  
Conversion: No

## 14 Floor 1 - Living Room

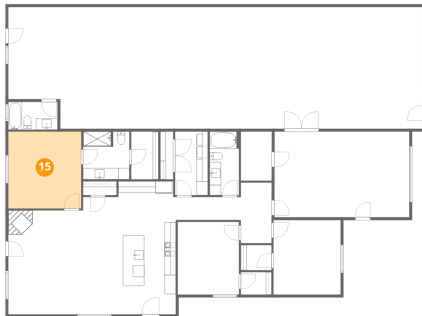


Dimensions: 13'3" x 18'5"  
Area: 244 sq. ft  
Counted as living area: Yes

Heated: Yes  
Finished: Yes  
Enclosed: Yes  
Contiguous: Yes  
Permitted: Yes  
Wet space: No  
Addition: No  
Conversion: No



## 15 Floor 1 - Primary Bedroom



Dimensions: 12'11" x 13'7"  
Area: 176 sq. ft  
Counted as living area: Yes

Heated: Yes  
Finished: Yes  
Enclosed: Yes  
Contiguous: Yes  
Permitted: Yes  
Wet space: No  
Addition: No  
Conversion: No

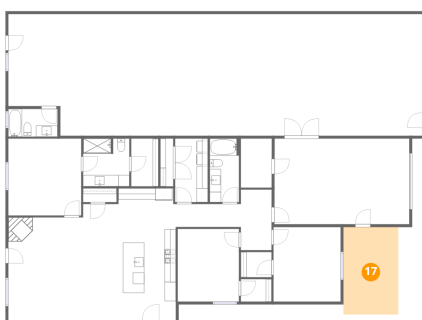
## 16 Floor 1 - Patio



Dimensions: 34'2" x 6'5"  
Area: 171 sq. ft  
Counted as living area: No

Heated: No  
Finished: No  
Enclosed: No  
Contiguous: Yes  
Permitted: Yes  
Wet space: No  
Addition: No  
Conversion: No

## 17 Floor 1 - Covered Patio



Dimensions: 9'9" x 15'6"  
Area: 150 sq. ft  
Counted as living area: No

Heated: No  
Finished: No  
Enclosed: No  
Contiguous: Yes  
Permitted: Yes  
Wet space: No  
Addition: No  
Conversion: No

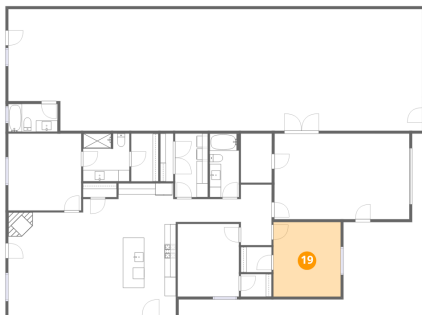
## 18 Floor 1 - Laundry



Dimensions: 5'10" x 11'3"  
Area: 65 sq. ft  
Counted as living area: Yes

Heated: Yes  
Finished: Yes  
Enclosed: Yes  
Contiguous: Yes  
Permitted: Yes  
Wet space: No  
Addition: No  
Conversion: No

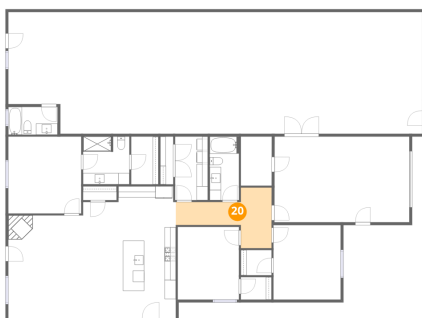
## 19 Floor 1 - Bedroom



Dimensions: 11'11" x 13'2"  
Area: 157 sq. ft  
Counted as living area: Yes

Heated: Yes  
Finished: Yes  
Enclosed: Yes  
Contiguous: Yes  
Permitted: Yes  
Wet space: No  
Addition: No  
Conversion: No

## 20 Floor 1 - Hall



Dimensions: 16'11" x 10'9"  
Area: 105 sq. ft  
Counted as living area: Yes

Heated: Yes  
Finished: Yes  
Enclosed: Yes  
Contiguous: Yes  
Permitted: Yes  
Wet space: No  
Addition: No  
Conversion: No