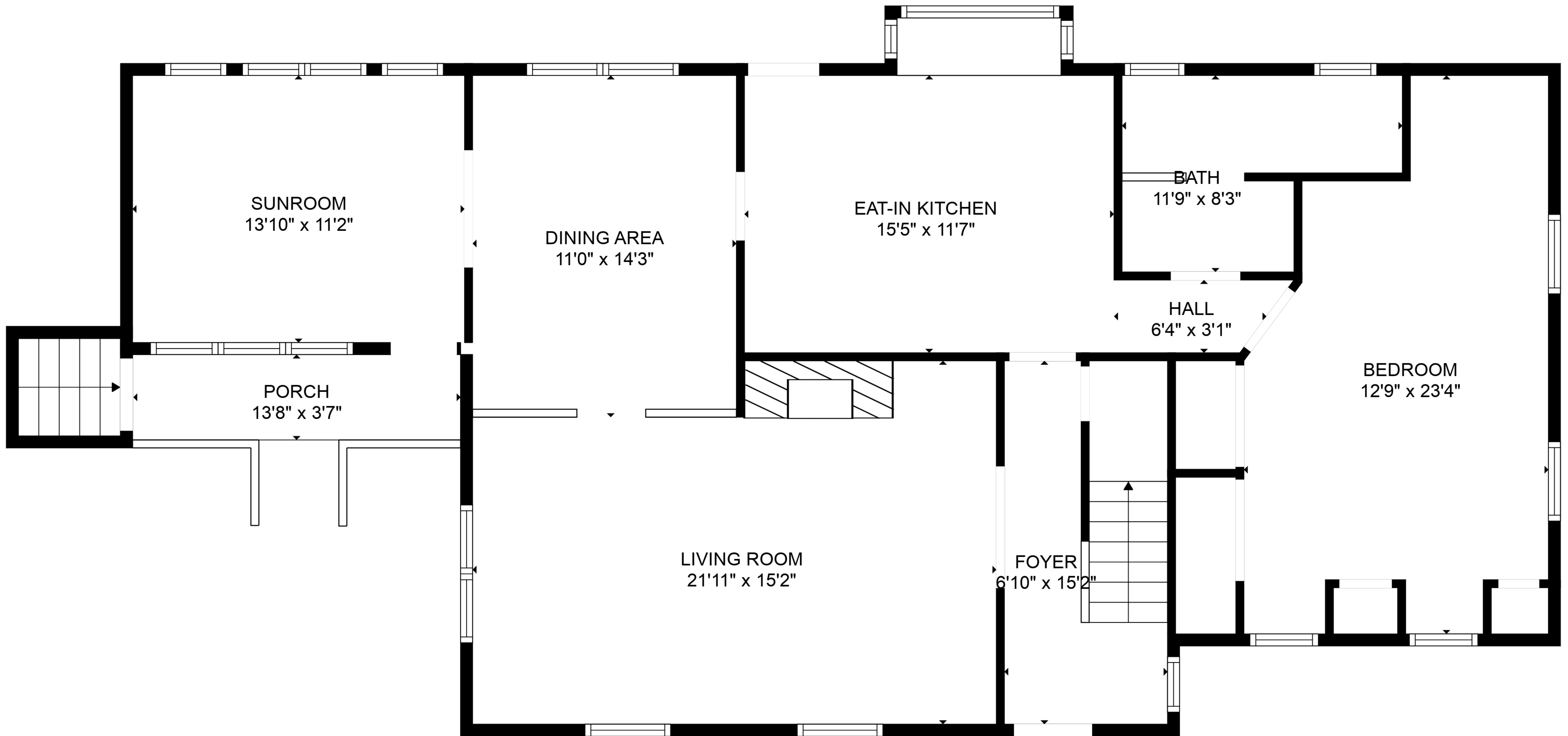


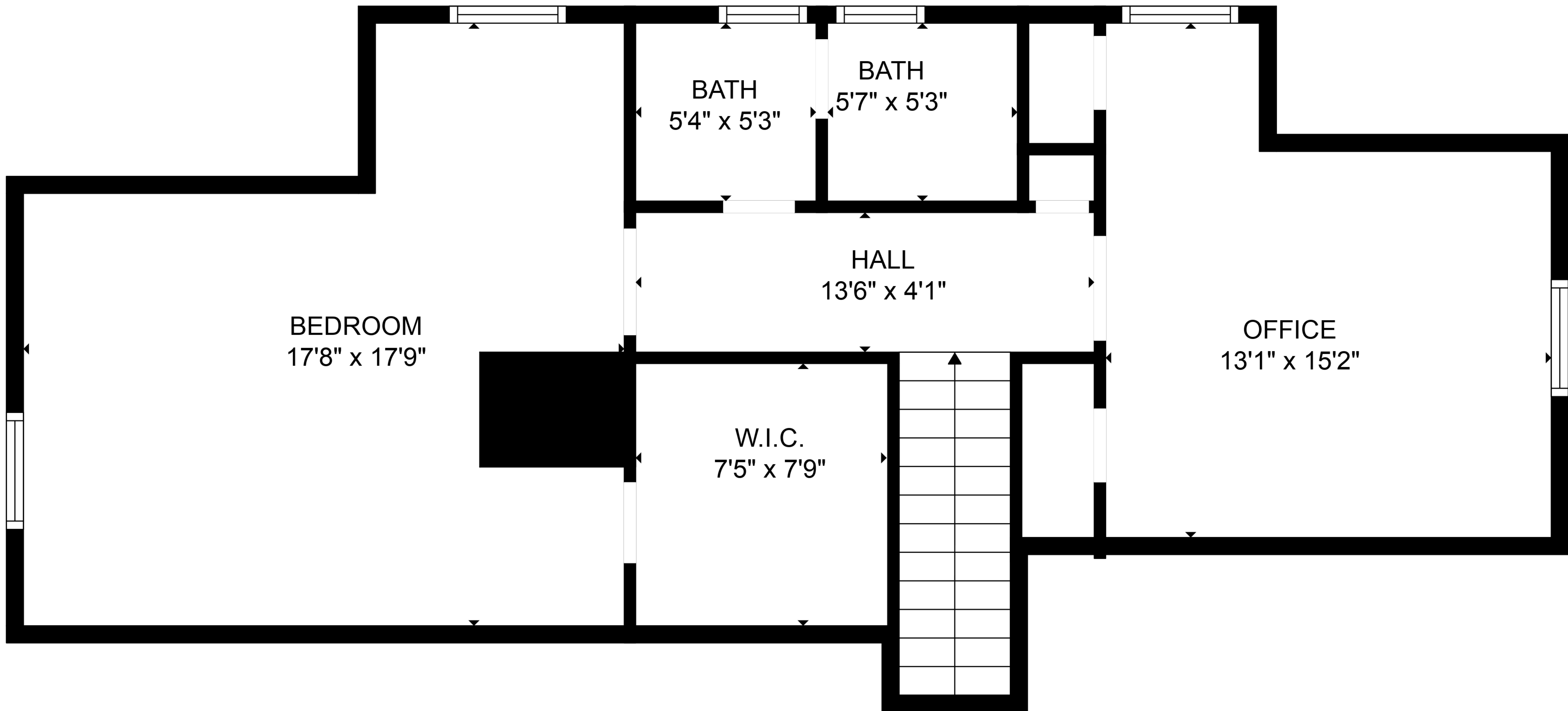
TOTAL: 2159 sq. ft  
BELOW GROUND: 266 sq. ft, FLOOR 2: 1352 sq. ft, FLOOR 3: 541 sq. ft  
EXCLUDED AREAS: PORCH: 49 sq. ft, LOW CEILING: 138 sq. ft

SIZES AND DIMENSIONS ARE APPROXIMATE. ACTUAL MAY VARY.



TOTAL: 2159 sq. ft  
 BELOW GROUND: 266 sq. ft, FLOOR 2: 1352 sq. ft, FLOOR 3: 541 sq. ft  
 EXCLUDED AREAS: PORCH: 49 sq. ft, LOW CEILING: 138 sq. ft

SIZES AND DIMENSIONS ARE APPROXIMATE. ACTUAL MAY VARY.



BEDROOM  
17'8" x 17'9"

BATH  
5'4" x 5'3"

BATH  
5'7" x 5'3"

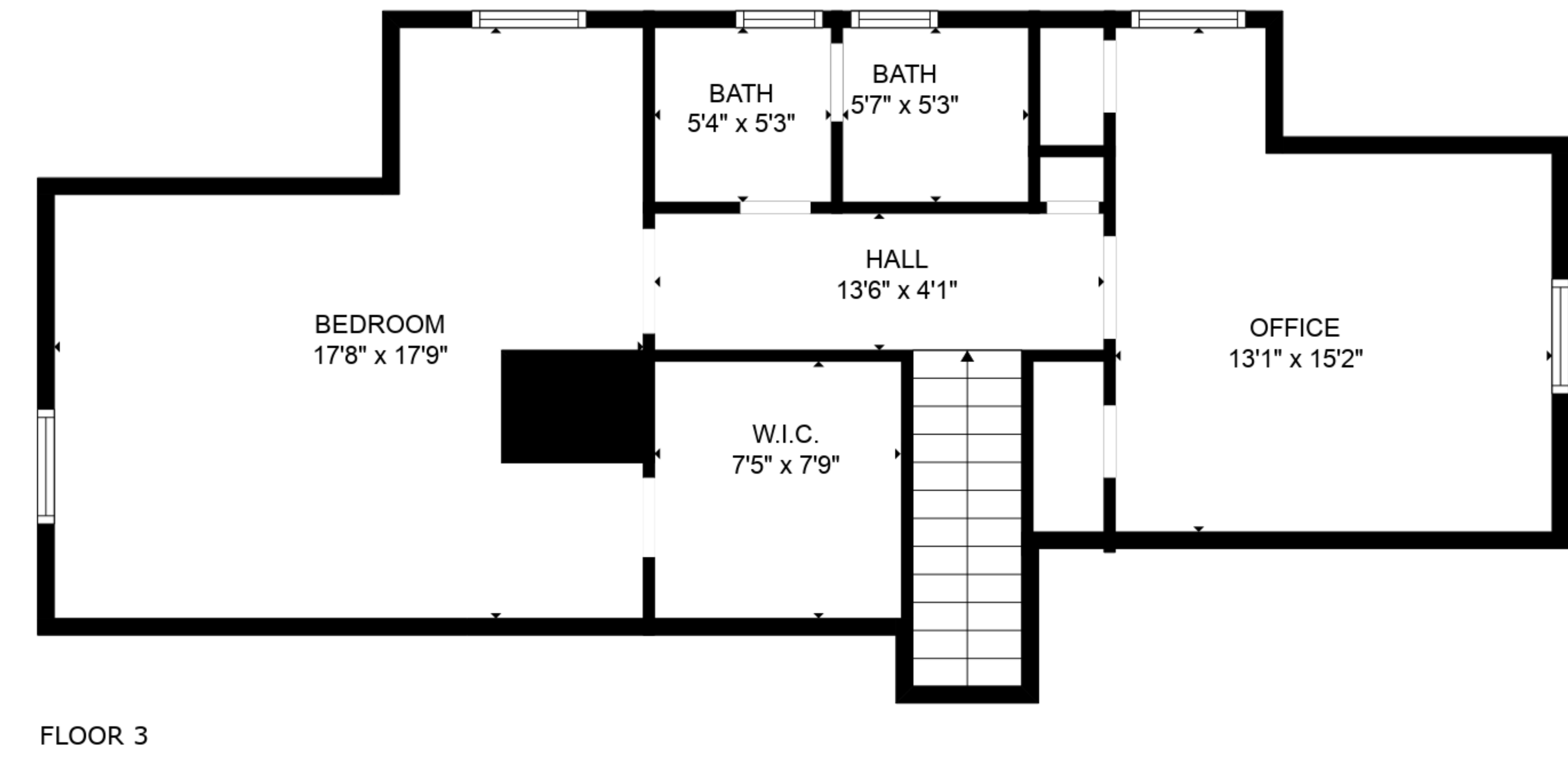
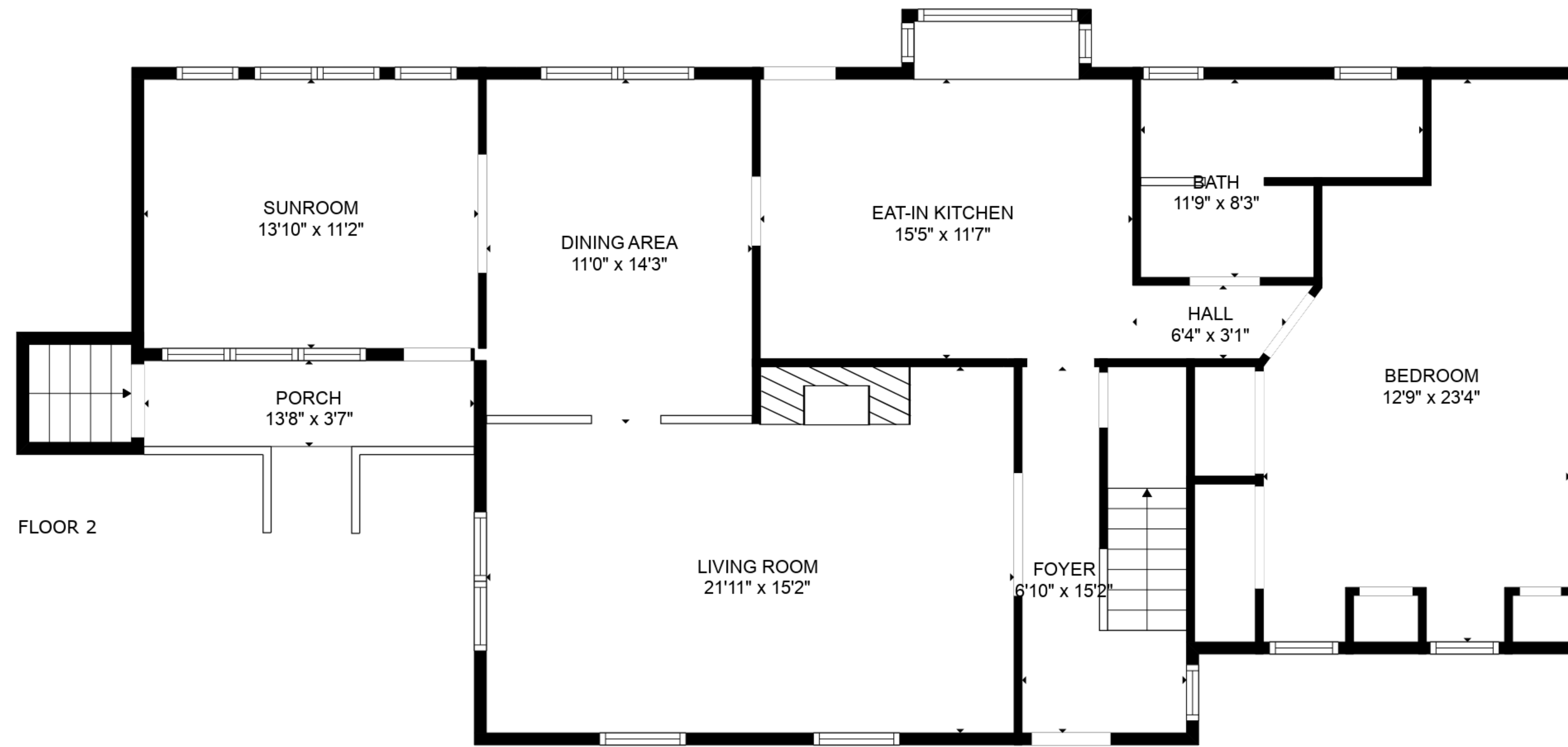
HALL  
13'6" x 4'1"

OFFICE  
13'1" x 15'2"

W.I.C.  
7'5" x 7'9"

TOTAL: 2159 sq. ft  
 BELOW GROUND: 266 sq. ft, FLOOR 2: 1352 sq. ft, FLOOR 3: 541 sq. ft  
 EXCLUDED AREAS: PORCH: 49 sq. ft, LOW CEILING: 138 sq. ft

SIZES AND DIMENSIONS ARE APPROXIMATE. ACTUAL MAY VARY.



TOTAL: 2159 sq. ft  
 BELOW GROUND: 266 sq. ft, FLOOR 2: 1352 sq. ft, FLOOR 3: 541 sq. ft  
 EXCLUDED AREAS: PORCH: 49 sq. ft, LOW CEILING: 138 sq. ft

SIZES AND DIMENSIONS ARE APPROXIMATE. ACTUAL MAY VARY.