

Home report


6919 Sharpsburg Dr,Centreville,VA,US




Property summary


 **1** Garages


 **5** Bedrooms

 **3** Bathrooms

 **1** Half baths

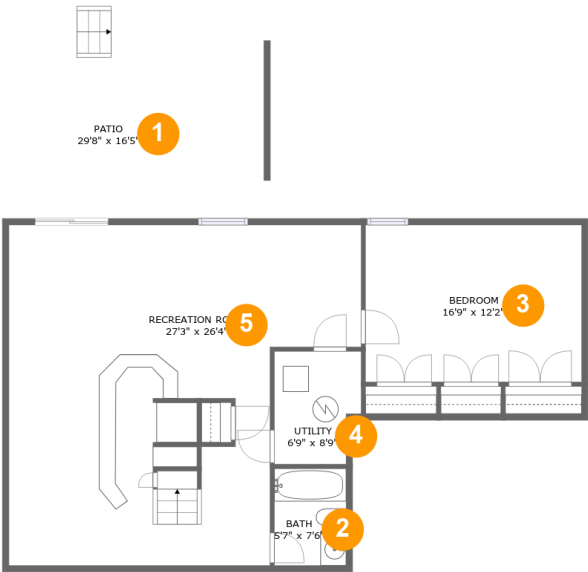
 **3** Floors

 **3,118** Gross living area sqft

 **4,317** Total sqft

Home report

6919 Sharpsburg Dr,Centreville,VA,US



Room dimensions

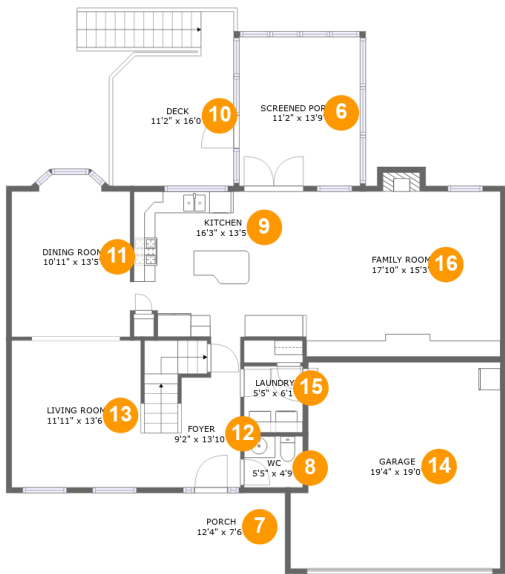
Floor 1

Total sqft: 1346 Living area: 967

#		Dimensions	sqft	Counted as living area
1	Patio	29'8" x 16'5"	323 sq. ft	No
2	Bath	5'7" x 7'6"	42 sq. ft	Yes
3	Bedroom	16'9" x 12'2"	203 sq. ft	Yes
4	Utility	6'9" x 8'9"	54 sq. ft	No
5	Recreation Room	27'3" x 26'4"	598 sq. ft	Yes

Home report

6919 Sharpsburg Dr,Centreville,VA,US



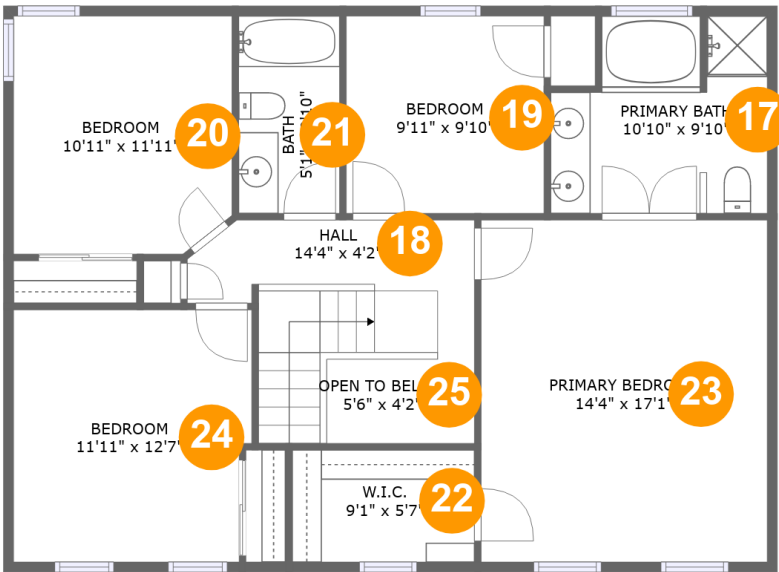
Room dimensions

Floor 2 Total sqft: 1879 Living area: 1082

#		Dimensions	sqft	Counted as living area
6	Screened Porch	11'2" x 13'9"	153 sq. ft	No
7	Porch	12'4" x 7'6"	92 sq. ft	No
8	WC	5'5" x 4'9"	26 sq. ft	Yes
9	Kitchen	16'3" x 13'5"	209 sq. ft	Yes
10	Deck	11'2" x 16'0"	144 sq. ft	No
11	Dining Room	10'11" x 13'5"	146 sq. ft	Yes
12	Foyer	9'2" x 13'10"	120 sq. ft	Yes
13	Living Room	11'11" x 13'6"	161 sq. ft	Yes
14	Garage	19'4" x 19'0"	348 sq. ft	No
15	Laundry	5'5" x 6'1"	33 sq. ft	Yes
16	Family Room	17'10" x 15'3"	278 sq. ft	Yes

Home report

6919 Sharpsburg Dr,Centreville,VA,US

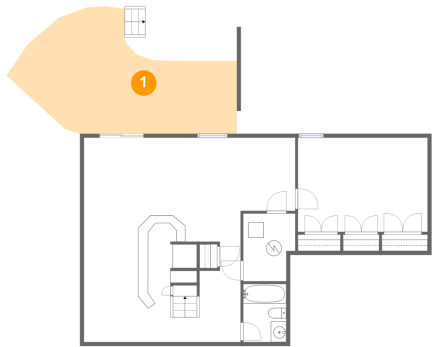


Room dimensions

Floor 3 Total sqft: 1092 Living area: 1069

#		Dimensions	sqft	Counted as living area
17	Primary Bath	10'10" x 9'10"	96 sq. ft	Yes
18	Hall	14'4" x 4'2"	109 sq. ft	Yes
19	Bedroom	9'11" x 9'10"	97 sq. ft	Yes
20	Bedroom	10'11" x 11'11"	127 sq. ft	Yes
21	Bath	5'1" x 9'10"	50 sq. ft	Yes
22	W.I.C.	9'1" x 5'7"	51 sq. ft	Yes
23	Primary Bedroom	14'4" x 17'1"	244 sq. ft	Yes
24	Bedroom	11'11" x 12'7"	146 sq. ft	Yes
25	Open To Below	5'6" x 4'2"	23 sq. ft	No

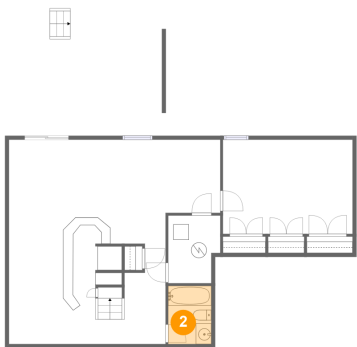
1 Floor 1 - Patio



Dimensions: 29'8" x 16'5"
Area: 323 sq. ft
Counted as living area: No

Heated: No
Finished: Yes
Enclosed: No
Contiguous: Yes
Permitted: Yes
Wet space: No
Addition: No
Conversion: No

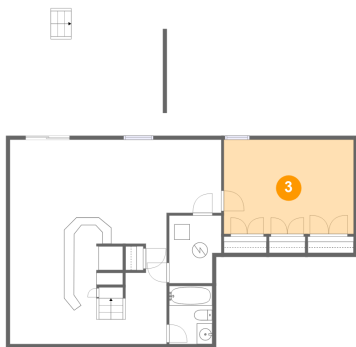
2 Floor 1 - Bath



Dimensions: 5'7" x 7'6"
Area: 42 sq. ft
Counted as living area: Yes

Heated: Yes
Finished: Yes
Enclosed: Yes
Contiguous: Yes
Permitted: Yes
Wet space: Yes
Addition: No
Conversion: No

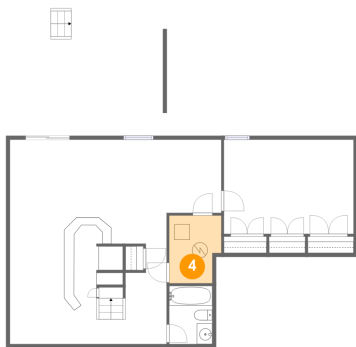
3 Floor 1 - Bedroom



Dimensions: 16'9" x 12'2"
Area: 203 sq. ft
Counted as living area: Yes

Heated: Yes
Finished: Yes
Enclosed: Yes
Contiguous: Yes
Permitted: Yes
Wet space: No
Addition: No
Conversion: No

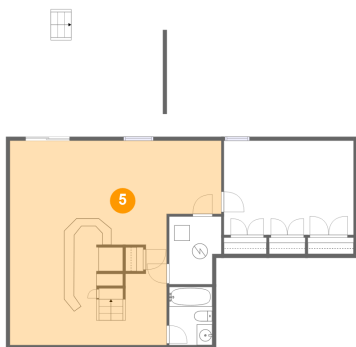
4 Floor 1 - Utility



Dimensions: 6'9" x 8'9"
Area: 54 sq. ft
Counted as living area: No

Heated: No
Finished: No
Enclosed: Yes
Contiguous: Yes
Permitted: Yes
Wet space: No
Addition: No
Conversion: No

5 Floor 1 - Recreation Room



Dimensions: 27'3" x 26'4"
Area: 598 sq. ft
Counted as living area: Yes

Heated: Yes
Finished: Yes
Enclosed: Yes
Contiguous: Yes
Permitted: Yes
Wet space: No
Addition: No
Conversion: No

6 Floor 2 - Screened Porch



Dimensions: 11'2" x 13'9"
Area: 153 sq. ft
Counted as living area: No

Heated: No
Finished: Yes
Enclosed: No
Contiguous: Yes
Permitted: Yes
Wet space: No
Addition: No
Conversion: No

7 Floor 2 - Porch



Dimensions: 12'4" x 7'6"
Area: 92 sq. ft
Counted as living area: No

Heated: No
Finished: Yes
Enclosed: No
Contiguous: Yes
Permitted: Yes
Wet space: No
Addition: No
Conversion: No

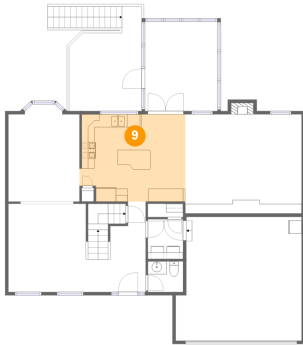
8 Floor 2 - WC



Dimensions: 5'5" x 4'9"
Area: 26 sq. ft
Counted as living area: Yes

Heated: Yes
Finished: Yes
Enclosed: Yes
Contiguous: Yes
Permitted: Yes
Wet space: Yes
Addition: No
Conversion: No

9 Floor 2 - Kitchen



Dimensions: 16'3" x 13'5"
Area: 209 sq. ft
Counted as living area: Yes

Heated: Yes
Finished: Yes
Enclosed: Yes
Contiguous: Yes
Permitted: Yes
Wet space: No
Addition: No
Conversion: No

10 Floor 2 - Deck



Dimensions: 11'2" x 16'0"
Area: 144 sq. ft
Counted as living area: No

Heated: No
Finished: Yes
Enclosed: No
Contiguous: Yes
Permitted: Yes
Wet space: No
Addition: No
Conversion: No

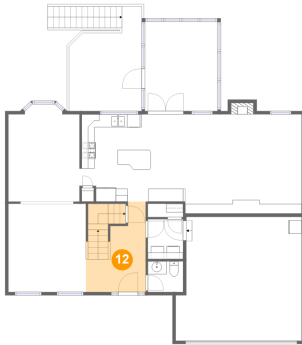
11 Floor 2 - Dining Room



Dimensions: 10'11" x 13'5"
Area: 146 sq. ft
Counted as living area: Yes

Heated: Yes
Finished: Yes
Enclosed: Yes
Contiguous: Yes
Permitted: Yes
Wet space: No
Addition: No
Conversion: No

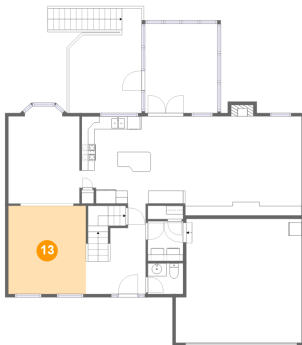
12 Floor 2 - Foyer



Dimensions: 9'2" x 13'10"
Area: 120 sq. ft
Counted as living area: Yes

Heated: Yes
Finished: Yes
Enclosed: Yes
Contiguous: Yes
Permitted: Yes
Wet space: No
Addition: No
Conversion: No

13 Floor 2 - Living Room



Dimensions: 11'11" x 13'6"
Area: 161 sq. ft
Counted as living area: Yes

Heated: Yes
Finished: Yes
Enclosed: Yes
Contiguous: Yes
Permitted: Yes
Wet space: No
Addition: No
Conversion: No

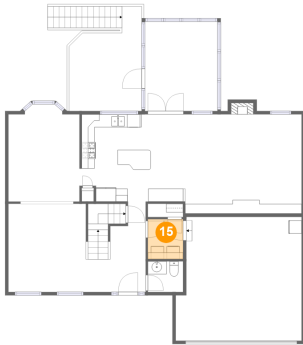
14 Floor 2 - Garage



Dimensions: 19'4" x 19'0"
Area: 348 sq. ft
Counted as living area: No

Heated: No
Finished: No
Enclosed: Yes
Contiguous: Yes
Permitted: Yes
Wet space: No
Addition: No
Conversion: No

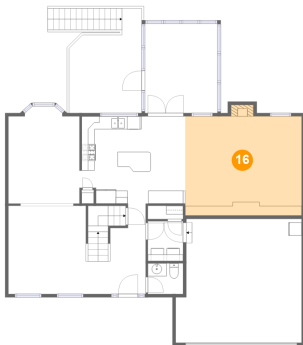
15 Floor 2 - Laundry



Dimensions: 5'5" x 6'1"
Area: 33 sq. ft
Counted as living area: Yes

Heated: Yes
Finished: Yes
Enclosed: Yes
Contiguous: Yes
Permitted: Yes
Wet space: No
Addition: No
Conversion: No

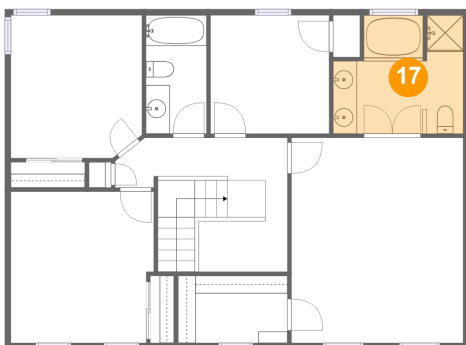
16 Floor 2 - Family Room



Dimensions: 17'10" x 15'3"
Area: 278 sq. ft
Counted as living area: Yes

Heated: Yes
Finished: Yes
Enclosed: Yes
Contiguous: Yes
Permitted: Yes
Wet space: No
Addition: No
Conversion: No

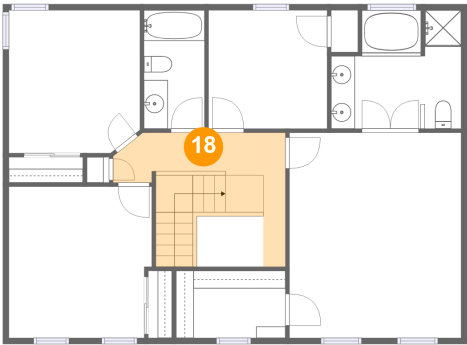
17 Floor 3 - Primary Bath



Dimensions: 10'10" x 9'10"
Area: 96 sq. ft
Counted as living area: Yes

Heated: Yes
Finished: Yes
Enclosed: Yes
Contiguous: Yes
Permitted: Yes
Wet space: Yes
Addition: No
Conversion: No

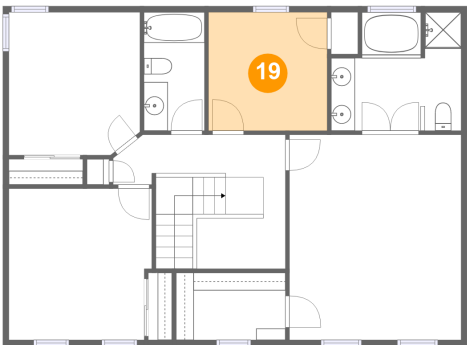
18 Floor 3 - Hall



Dimensions: 14'4" x 4'2"
Area: 109 sq. ft
Counted as living area: Yes

Heated: Yes
Finished: Yes
Enclosed: Yes
Contiguous: Yes
Permitted: Yes
Wet space: No
Addition: No
Conversion: No

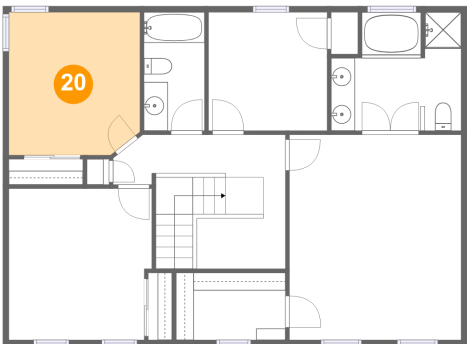
19 Floor 3 - Bedroom



Dimensions: 9'11" x 9'10"
Area: 97 sq. ft
Counted as living area: Yes

Heated: Yes
Finished: Yes
Enclosed: Yes
Contiguous: Yes
Permitted: Yes
Wet space: No
Addition: No
Conversion: No

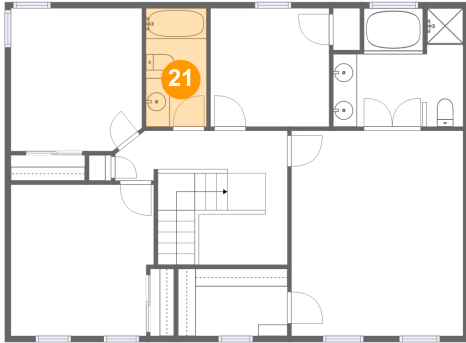
20 Floor 3 - Bedroom



Dimensions: 10'11" x 11'11"
Area: 127 sq. ft
Counted as living area: Yes

Heated: Yes
Finished: Yes
Enclosed: Yes
Contiguous: Yes
Permitted: Yes
Wet space: No
Addition: No
Conversion: No

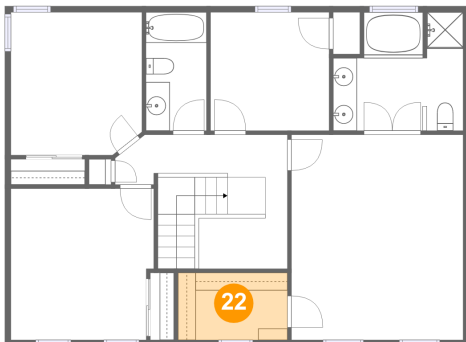
21 Floor 3 - Bath



Dimensions: 5'1" x 9'10"
Area: 50 sq. ft
Counted as living area: Yes

Heated: Yes
Finished: Yes
Enclosed: Yes
Contiguous: Yes
Permitted: Yes
Wet space: Yes
Addition: No
Conversion: No

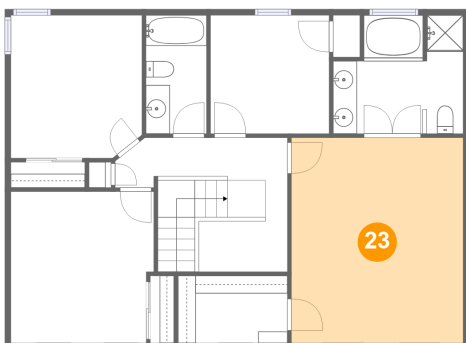
22 Floor 3 - W.I.C.



Dimensions: 9'1" x 5'7"
Area: 51 sq. ft
Counted as living area: Yes

Heated: Yes
Finished: Yes
Enclosed: Yes
Contiguous: Yes
Permitted: Yes
Wet space: No
Addition: No
Conversion: No

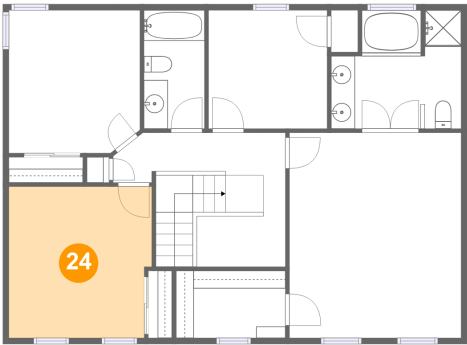
23 Floor 3 - Primary Bedroom



Dimensions: 14'4" x 17'1"
Area: 244 sq. ft
Counted as living area: Yes

Heated: Yes
Finished: Yes
Enclosed: Yes
Contiguous: Yes
Permitted: Yes
Wet space: No
Addition: No
Conversion: No

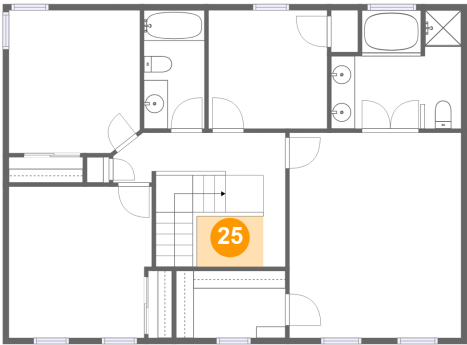
24 Floor 3 - Bedroom



Dimensions: 11'11" x 12'7"
Area: 146 sq. ft
Counted as living area: Yes

Heated: Yes
Finished: Yes
Enclosed: Yes
Contiguous: Yes
Permitted: Yes
Wet space: No
Addition: No
Conversion: No

25 Floor 3 - Open To Below



Dimensions: 5'6" x 4'2"
Area: 23 sq. ft
Counted as living area: No

Heated: No
Finished: No
Enclosed: No
Contiguous: Yes
Permitted: No
Wet space: No
Addition: No
Conversion: No