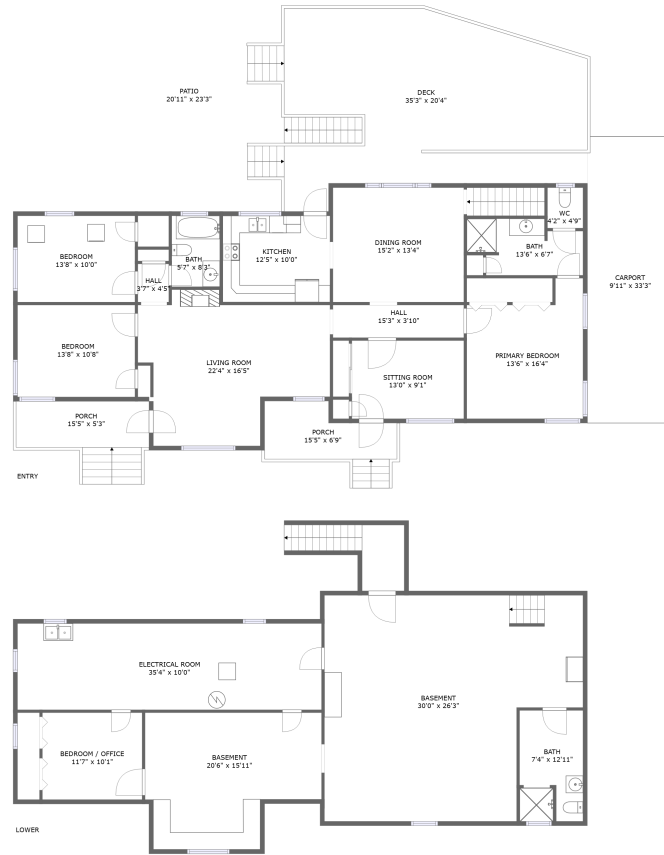


3759 View Avenue, Castle Hill, Cave Spring, Roanoke, Roanoke County, Virginia, United




Property Summary

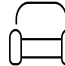
 **0** garages

 **4** bedrooms

 **3** bathrooms

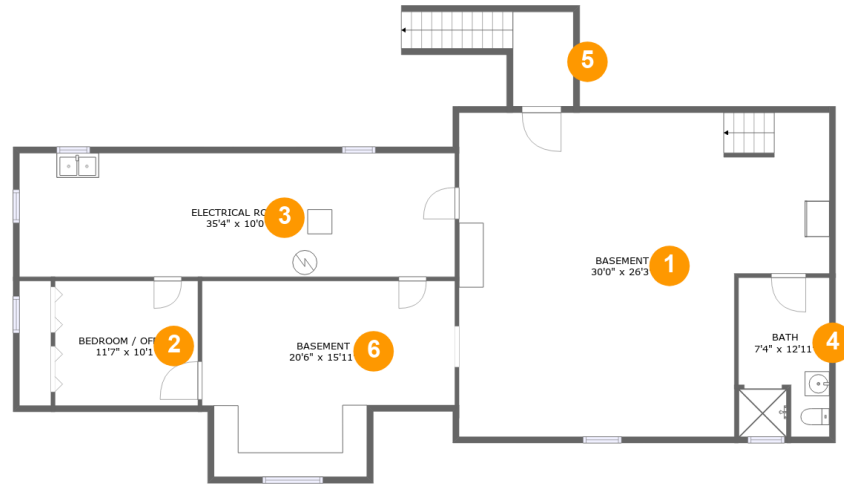
 **0** half baths

 **2** floors

 **2,196** Gross Living Area sqft

 **5,060** total sqft

3759 View Avenue, Castle Hill, Cave Spring, Roanoke, Roanoke County, Virginia, United



Room Dimensions

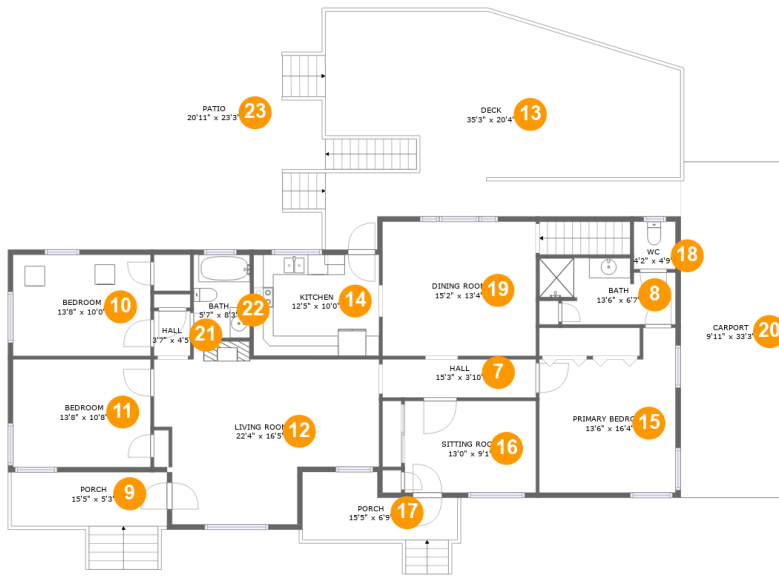
Floor 1

Total sqft: 1690

Living area: 473

#	Room name	Dimensions	Area (sqft)	Counted as Living Area
1	Basement	30'0" x 26'3"	688 sq. ft	No
2	Bedroom / Office	11'7" x 10'1"	117 sq. ft	Yes
3	Electrical Room	35'4" x 10'0"	354 sq. ft	No
4	Bath	7'4" x 12'11"	93 sq. ft	No
5	Outdoor	4'10" x 7'8"	38 sq. ft	No
6	Basement	20'6" x 15'11"	279 sq. ft	Yes

3759 View Avenue, Castle Hill, Cave Spring, Roanoke, Roanoke County, Virginia, United



Room Dimensions

Floor 2

Total sqft: 3370

Living area: 1723

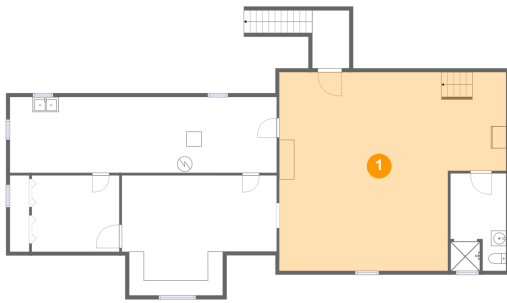
#	Room name	Dimensions	Area (sqft)	Counted as Living Area
7	Hall	15'3" x 3'10"	58 sq. ft	Yes
8	Bath	13'6" x 6'7"	76 sq. ft	Yes
9	Porch	15'5" x 5'3"	83 sq. ft	No
10	Bedroom	13'8" x 10'0"	137 sq. ft	Yes
11	Bedroom	13'8" x 10'8"	146 sq. ft	Yes
12	Living Room	22'4" x 16'5"	312 sq. ft	Yes
13	Deck	35'3" x 20'4"	677 sq. ft	No
14	Kitchen	12'5" x 10'0"	125 sq. ft	Yes
15	Primary Bedroom	13'6" x 16'4"	189 sq. ft	Yes
16	Sitting Room	13'0" x 9'1"	118 sq. ft	Yes
17	Porch	15'5" x 6'9"	84 sq. ft	No

**3759 View Avenue, Castle Hill, Cave Spring,
Roanoke, Roanoke County, Virginia, United**

#	Room name	Dimensions	Area (sqft)	Counted as Living Area
18	Wc	4'2" x 4'9"	20 sq. ft	Yes
19	Dining Room	15'2" x 13'4"	203 sq. ft	Yes
20	Carport	9'11" x 33'3"	331 sq. ft	No
21	Hall	3'7" x 4'5"	16 sq. ft	Yes
22	Bath	5'7" x 8'3"	46 sq. ft	Yes
23	Patio	20'11" x 23'3"	472 sq. ft	No

3759 View Avenue, Castle Hill, Cave Spring, Roanoke, Roanoke County, Virginia, United

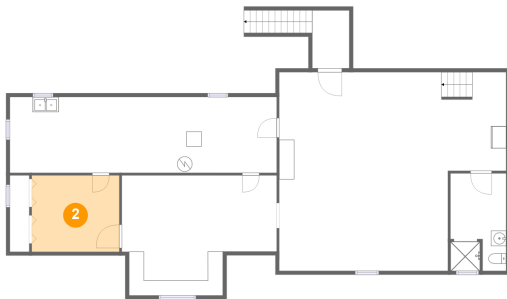
1 Floor 1 - Basement



Dimensions: 30'0" x 26'3"
Area: 688 sq. ft
Counted as Living Area: No

Heated: Yes
Finished: No
Enclosed: Yes
Contiguous: Yes
Permitted: Yes
Wet Space: No
Addition: No
Conversion: No

2 Floor 1 - Bedroom / Office

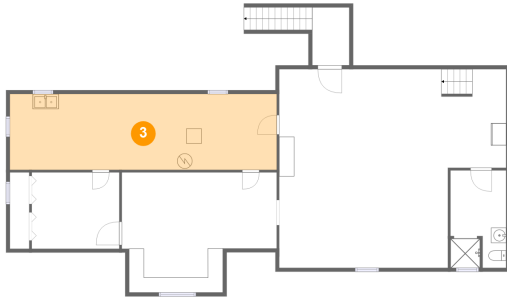


Dimensions: 11'7" x 10'1"
Area: 117 sq. ft
Counted as Living Area:
Yes

Heated: Yes
Finished: Yes
Enclosed: Yes
Contiguous:
Yes
Permitted: Yes
Wet Space: No
Addition: No
Conversion: No

3759 View Avenue, Castle Hill, Cave Spring, Roanoke, Roanoke County, Virginia, United

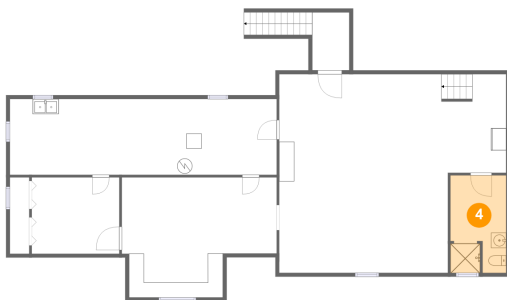
3 Floor 1 - Electrical Room



Dimensions: 35'4" x 10'0"
Area: 354 sq. ft
Counted as Living Area: No

Heated: No
Finished: No
Enclosed: Yes
Contiguous: Yes
Permitted: Yes
Wet Space: No
Addition: No
Conversion: No

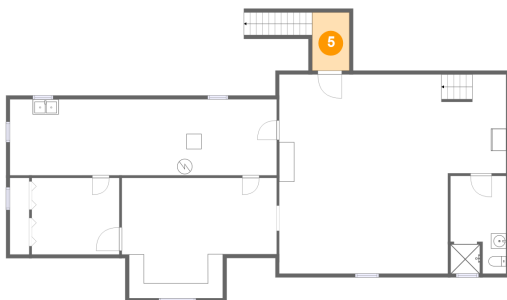
4 Floor 1 - Bath



Dimensions: 7'4" x 12'11"
Area: 93 sq. ft
Counted as Living Area: No

Heated: Yes
Finished: Yes
Enclosed: Yes
Contiguous: No
Permitted: Yes
Wet Space: Yes
Addition: No
Conversion: No

5 Floor 1 - Outdoor

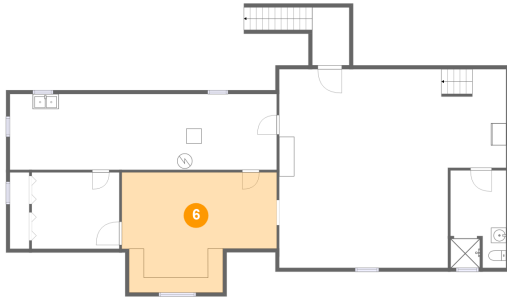


Dimensions: 4'10" x 7'8"
Area: 38 sq. ft
Counted as Living Area: No

Heated: No
Finished: No
Enclosed: No
Contiguous: Yes
Permitted: No
Wet Space: No
Addition: No
Conversion: No

3759 View Avenue, Castle Hill, Cave Spring, Roanoke, Roanoke County, Virginia, United

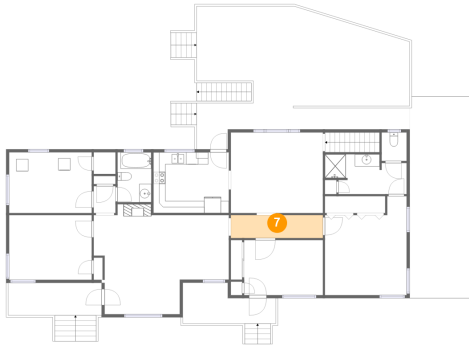
6 Floor 1 - Basement



Dimensions: 20'6" x 15'11"
Area: 279 sq. ft
Counted as Living Area:
Yes

Heated: Yes
Finished: Yes
Enclosed: Yes
Contiguous:
Yes
Permitted: Yes
Wet Space: No
Addition: No
Conversion: No

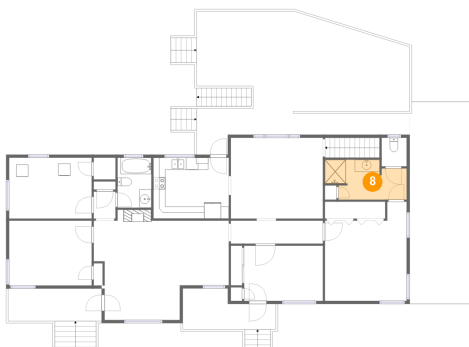
7 Floor 2 - Hall



Dimensions: 15'3" x 3'10"
Area: 58 sq. ft
Counted as Living Area:
Yes

Heated: Yes
Finished: Yes
Enclosed: Yes
Contiguous:
Yes
Permitted: Yes
Wet Space: No
Addition: No
Conversion: No

8 Floor 2 - Bath

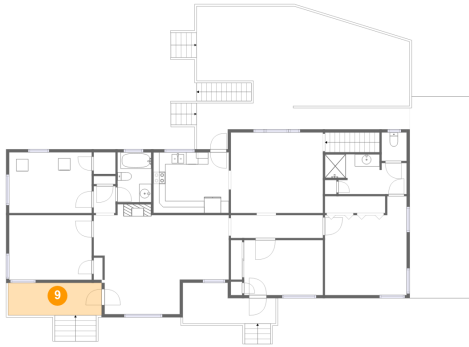


Dimensions: 13'6" x 6'7"
Area: 76 sq. ft
Counted as Living Area:
Yes

Heated: Yes
Finished: Yes
Enclosed: Yes
Contiguous:
Yes
Permitted: Yes
Wet Space: Yes
Addition: No
Conversion: No

3759 View Avenue, Castle Hill, Cave Spring, Roanoke, Roanoke County, Virginia, United

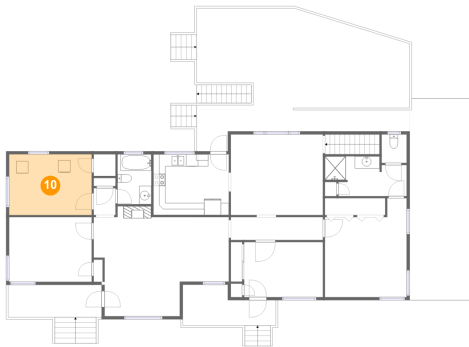
9 Floor 2 - Porch



Dimensions: 15'5" x 5'3"
Area: 83 sq. ft
Counted as Living Area: No

Heated: No
Finished: Yes
Enclosed: No
Contiguous: Yes
Permitted: Yes
Wet Space: No
Addition: No
Conversion: No

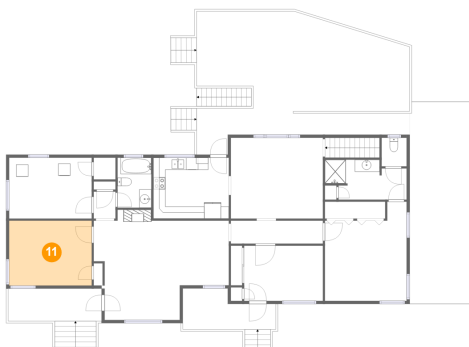
10 Floor 2 - Bedroom



Dimensions: 13'8" x 10'0"
Area: 137 sq. ft
Counted as Living Area:
Yes

Heated: Yes
Finished: Yes
Enclosed: Yes
Contiguous:
Yes
Permitted: Yes
Wet Space: No
Addition: No
Conversion: No

11 Floor 2 - Bedroom

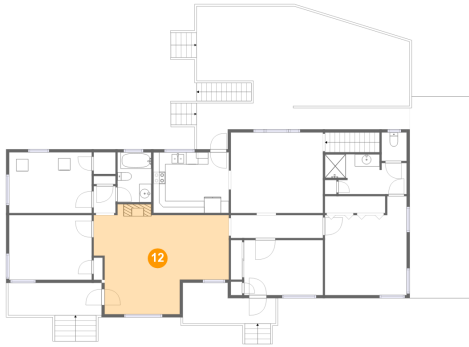


Dimensions: 13'8" x 10'8"
Area: 146 sq. ft
Counted as Living Area:
Yes

Heated: Yes
Finished: Yes
Enclosed: Yes
Contiguous:
Yes
Permitted: Yes
Wet Space: No
Addition: No
Conversion: No

3759 View Avenue, Castle Hill, Cave Spring, Roanoke, Roanoke County, Virginia, United

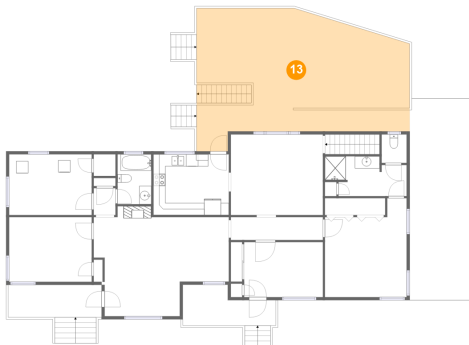
12 Floor 2 - Living Room



Dimensions: 22'4" x 16'5"
Area: 312 sq. ft
Counted as Living Area:
Yes

Heated: Yes
Finished: Yes
Enclosed: Yes
Contiguous:
Yes
Permitted: Yes
Wet Space: No
Addition: No
Conversion: No

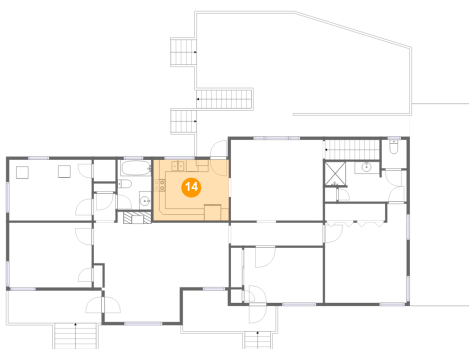
13 Floor 2 - Deck



Dimensions: 35'3" x 20'4"
Area: 677 sq. ft
Counted as Living Area: No

Heated: No
Finished: Yes
Enclosed: No
Contiguous: Yes
Permitted: Yes
Wet Space: No
Addition: No
Conversion: No

14 Floor 2 - Kitchen

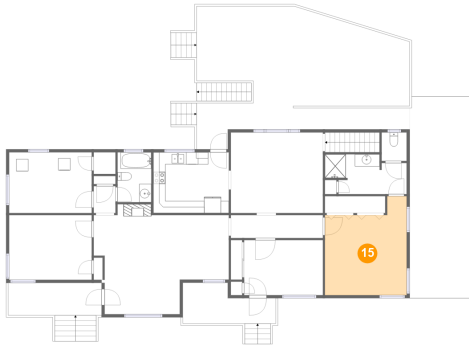


Dimensions: 12'5" x 10'0"
Area: 125 sq. ft
Counted as Living Area:
Yes

Heated: Yes
Finished: Yes
Enclosed: Yes
Contiguous:
Yes
Permitted: Yes
Wet Space: No
Addition: No
Conversion: No

3759 View Avenue, Castle Hill, Cave Spring, Roanoke, Roanoke County, Virginia, United

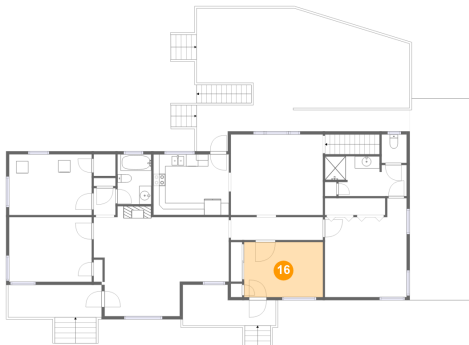
15 Floor 2 - Primary Bedroom



Dimensions: 13'6" x 16'4"
Area: 189 sq. ft
Counted as Living Area:
Yes

Heated: Yes
Finished: Yes
Enclosed: Yes
Contiguous:
Yes
Permitted: Yes
Wet Space: No
Addition: No
Conversion: No

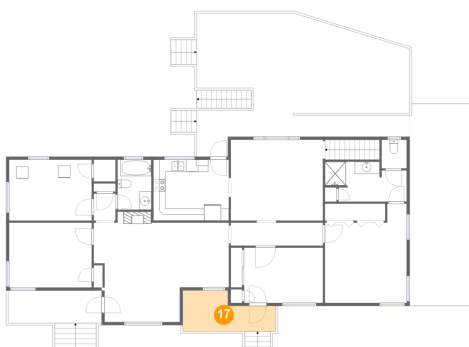
16 Floor 2 - Sitting Room



Dimensions: 13'0" x 9'1"
Area: 118 sq. ft
Counted as Living Area:
Yes

Heated: Yes
Finished: Yes
Enclosed: Yes
Contiguous:
Yes
Permitted: Yes
Wet Space: No
Addition: No
Conversion: No

17 Floor 2 - Porch

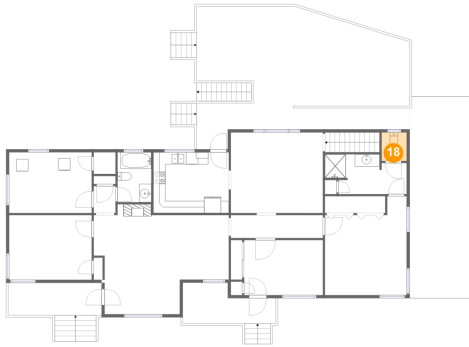


Dimensions: 15'5" x 6'9"
Area: 84 sq. ft
Counted as Living Area: No

Heated: No
Finished: Yes
Enclosed: No
Contiguous: Yes
Permitted: Yes
Wet Space: No
Addition: No
Conversion: No

3759 View Avenue, Castle Hill, Cave Spring, Roanoke, Roanoke County, Virginia, United

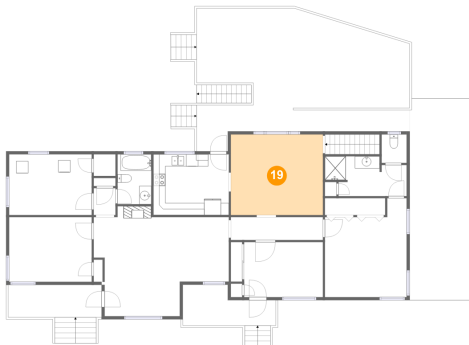
18 Floor 2 - Wc



Dimensions: 4'2" x 4'9"
Area: 20 sq. ft
Counted as Living Area:
Yes

Heated: Yes
Finished: Yes
Enclosed: Yes
Contiguous:
Yes
Permitted: Yes
Wet Space: Yes
Addition: No
Conversion: No

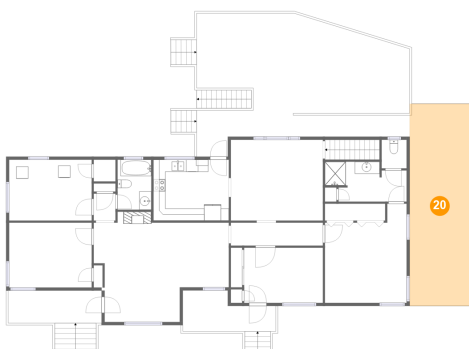
19 Floor 2 - Dining Room



Dimensions: 15'2" x 13'4"
Area: 203 sq. ft
Counted as Living Area:
Yes

Heated: Yes
Finished: Yes
Enclosed: Yes
Contiguous:
Yes
Permitted: Yes
Wet Space: No
Addition: No
Conversion: No

20 Floor 2 - Carport

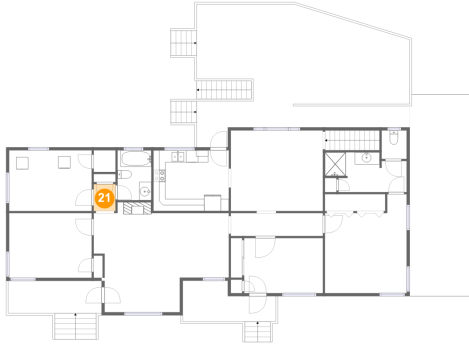


Dimensions: 9'11" x 33'3"
Area: 331 sq. ft
Counted as Living Area: No

Heated: No
Finished: Yes
Enclosed: No
Contiguous: Yes
Permitted: Yes
Wet Space: No
Addition: No
Conversion: No

3759 View Avenue, Castle Hill, Cave Spring, Roanoke, Roanoke County, Virginia, United

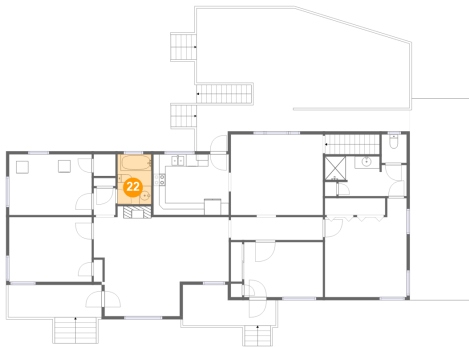
21 Floor 2 - Hall



Dimensions: 3'7" x 4'5"
Area: 16 sq. ft
Counted as Living Area:
Yes

Heated: Yes
Finished: Yes
Enclosed: Yes
Contiguous:
Yes
Permitted: Yes
Wet Space: No
Addition: No
Conversion: No

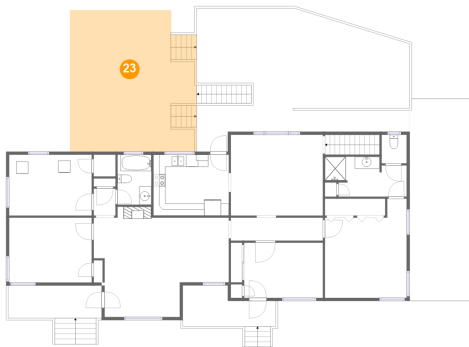
22 Floor 2 - Bath



Dimensions: 5'7" x 8'3"
Area: 46 sq. ft
Counted as Living Area:
Yes

Heated: Yes
Finished: Yes
Enclosed: Yes
Contiguous:
Yes
Permitted: Yes
Wet Space: Yes
Addition: No
Conversion: No

23 Floor 2 - Patio



Dimensions: 20'11" x 23'3"
Area: 472 sq. ft
Counted as Living Area: No

Heated: No
Finished: Yes
Enclosed: No
Contiguous: Yes
Permitted: Yes
Wet Space: No
Addition: No
Conversion: No