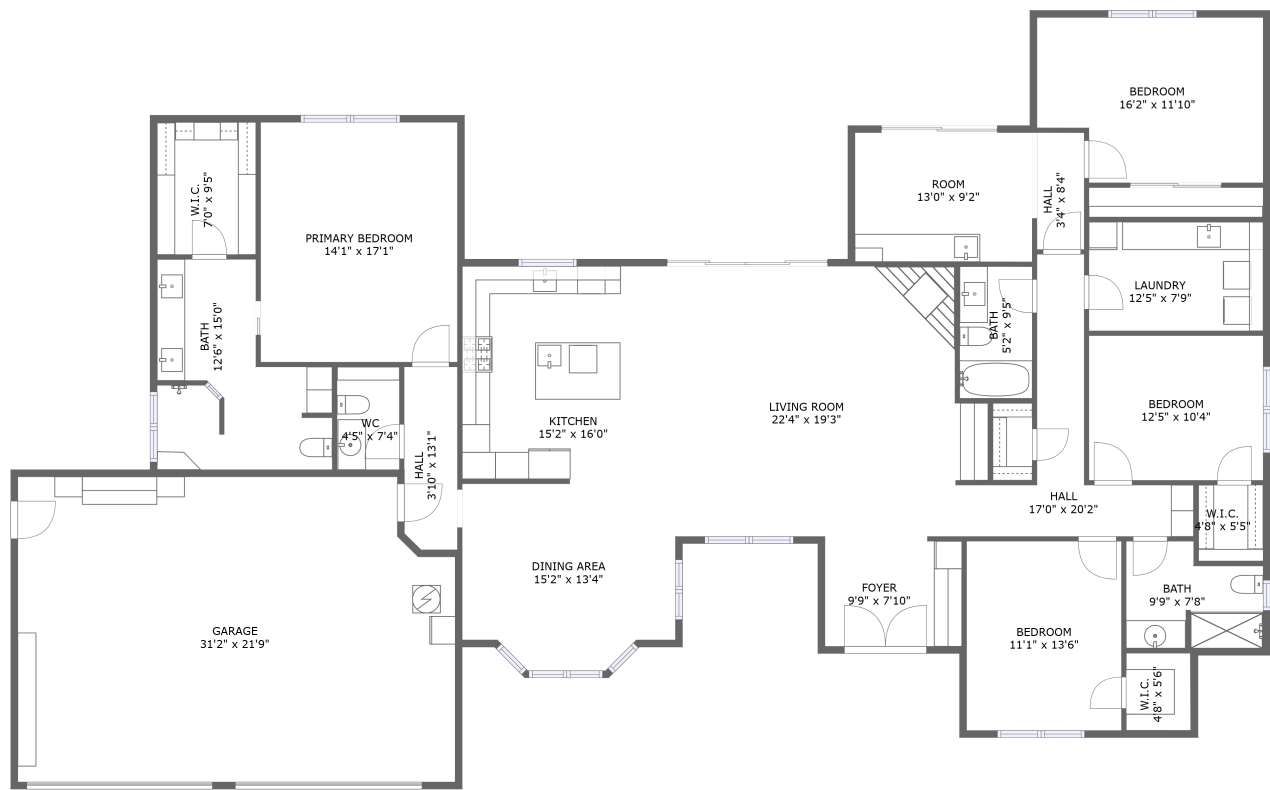


Home report

5633 Rancho La Loma Linda Drive, Paso Robles, San Luis Obispo County, California, United States, 93446



FLOOR 1


Total Area: 2543 sq. ft

Floor 1: 2543 sq. ft

Excluded: Garage 657 sq. ft, Walls: 185 sq. ft

Property summary

 1 Floors

 4 Bedrooms

 3 Bathrooms

Home report

**5633 Rancho La Loma Linda Drive, Paso Robles, San Luis
Obispo County, California, United States, 93446**



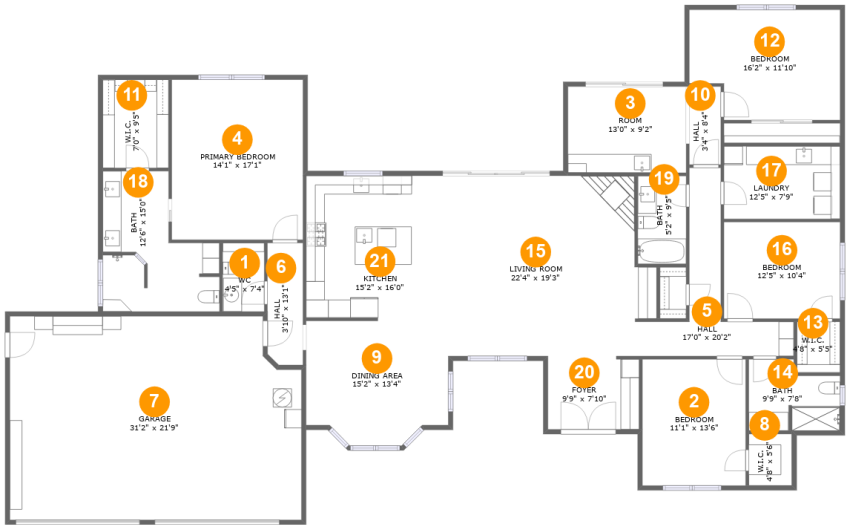
1
Half baths



1
Garages

Home report

5633 Rancho La Loma Linda Drive, Paso Robles, San Luis Obispo County, California, United States, 93446



Room dimensions

Floor 1 Total:2543sqft Excluded: 657sqft

#		Max Dimensions	sqft	Included
1	WC	4'5" x 7'4"	33 sq. ft	Yes
2	Bedroom	11'1" x 13'6"	149 sq. ft	Yes
3	Room	13'0" x 9'2"	117 sq. ft	Yes
4	Primary Bedroom	14'1" x 17'1"	240 sq. ft	Yes
5	Hall	17'0" x 20'2"	118 sq. ft	Yes
6	Hall	3'10" x 13'1"	49 sq. ft	Yes
7	Garage	31'2" x 21'9"	657 sq. ft	No
8	W.I.C.	4'8" x 5'6"	26 sq. ft	Yes
9	Dining Area	15'2" x 13'4"	187 sq. ft	Yes
10	Hall	3'4" x 8'4"	28 sq. ft	Yes
11	W.I.C.	7'0" x 9'5"	67 sq. ft	Yes

Home report

5633 Rancho La Loma Linda Drive, Paso Robles, San Luis Obispo County, California, United States, 93446

#		Max Dimensions	sqft	Included
12	Bedroom	16'2" x 11'10"	176 sq. ft	Yes
13	W.I.C.	4'8" x 5'5"	25 sq. ft	Yes
14	Bath	9'9" x 7'8"	65 sq. ft	Yes
15	Living Room	22'4" x 19'3"	398 sq. ft	Yes
16	Bedroom	12'5" x 10'4"	128 sq. ft	Yes
17	Laundry	12'5" x 7'9"	97 sq. ft	Yes
18	Bath	12'6" x 15'0"	143 sq. ft	Yes
19	Bath	5'2" x 9'5"	49 sq. ft	Yes
20	Foyer	9'9" x 7'10"	76 sq. ft	Yes
21	Kitchen	15'2" x 16'0"	234 sq. ft	Yes

5633 Rancho La Loma Linda Drive, Paso Robles, San Luis
Obispo County, California, United States, 93446

1 Floor 1 - WC



Max Dimensions: 4'5" x 7'4"
Calculated Area: 33 sq. ft
Included: Yes

Heated: Yes
Finished: Yes
Enclosed: Yes
Contiguous: Yes
Permitted: Yes
Wet space: Yes
Addition: No
Conversion: No

2 Floor 1 - Bedroom

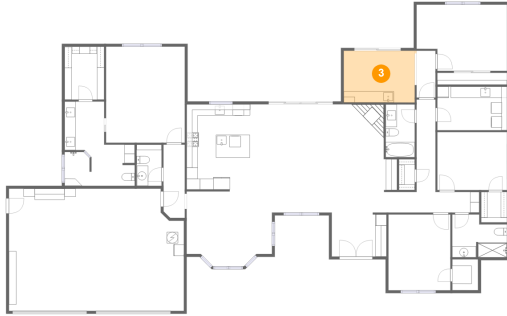


Max Dimensions: 11'1" x 13'6"
Calculated Area: 149 sq. ft
Included: Yes

Heated: Yes
Finished: Yes
Enclosed: Yes
Contiguous: Yes
Permitted: Yes
Wet space: No
Addition: No
Conversion: No

5633 Rancho La Loma Linda Drive, Paso Robles, San Luis
Obispo County, California, United States, 93446

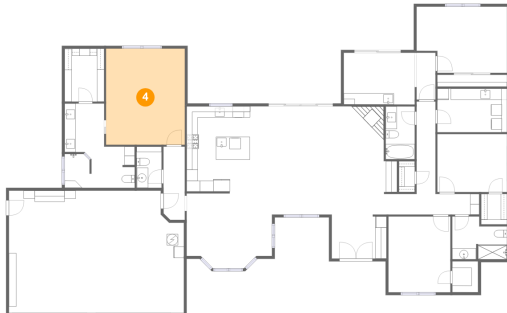
3 Floor 1 - Room



Max Dimensions: 13'0" x 9'2"
Calculated Area: 117 sq. ft
Included: Yes

Heated: Yes
Finished: Yes
Enclosed: Yes
Contiguous: Yes
Permitted: Yes
Wet space: No
Addition: No
Conversion: No

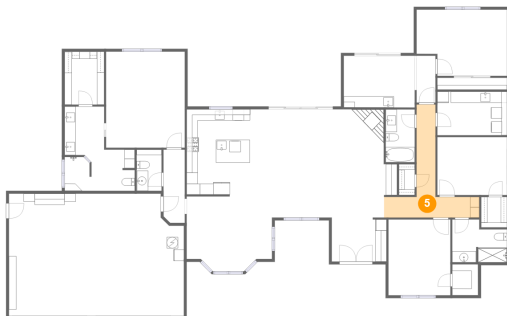
4 Floor 1 - Primary Bedroom



Max Dimensions: 14'1" x 17'1"
Calculated Area: 240 sq. ft
Included: Yes

Heated: Yes
Finished: Yes
Enclosed: Yes
Contiguous: Yes
Permitted: Yes
Wet space: No
Addition: No
Conversion: No

5 Floor 1 - Hall



Max Dimensions: 17'0" x 20'2"
Calculated Area: 118 sq. ft
Included: Yes

Heated: Yes
Finished: Yes
Enclosed: Yes
Contiguous: Yes
Permitted: Yes
Wet space: No
Addition: No
Conversion: No

5633 Rancho La Loma Linda Drive, Paso Robles, San Luis
Obispo County, California, United States, 93446

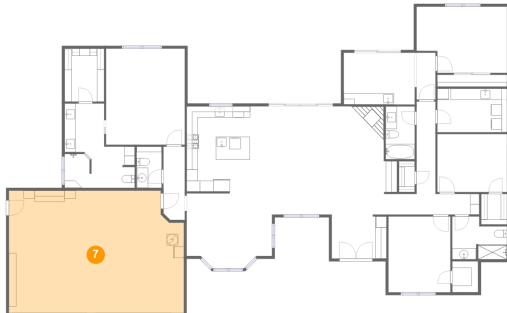
6 Floor 1 - Hall



Max Dimensions: 3'10" x 13'1"
Calculated Area: 49 sq. ft
Included: Yes

Heated: Yes
Finished: Yes
Enclosed: Yes
Contiguous: Yes
Permitted: Yes
Wet space: No
Addition: No
Conversion: No

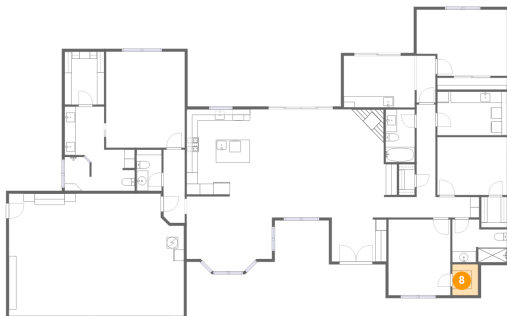
7 Floor 1 - Garage



Max Dimensions: 31'2" x 21'9"
Calculated Area: 657 sq. ft
Included: No

Heated: No
Finished: No
Enclosed: Yes
Contiguous: Yes
Permitted: Yes
Wet space: No
Addition: No
Conversion: No

8 Floor 1 - W.I.C.

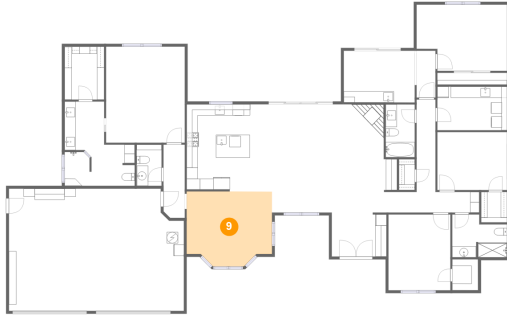


Max Dimensions: 4'8" x 5'6"
Calculated Area: 26 sq. ft
Included: Yes

Heated: Yes
Finished: Yes
Enclosed: Yes
Contiguous: Yes
Permitted: Yes
Wet space: No
Addition: No
Conversion: No

5633 Rancho La Loma Linda Drive, Paso Robles, San Luis
Obispo County, California, United States, 93446

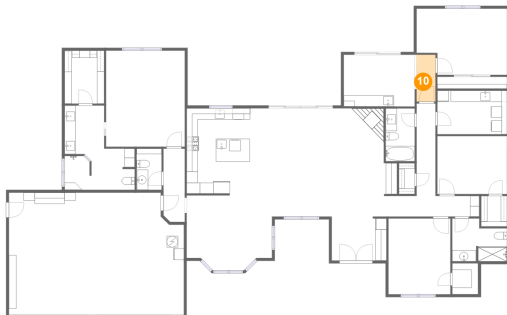
9 Floor 1 - Dining Area



Max Dimensions: 15'2" x 13'4"
Calculated Area: 187 sq. ft
Included: Yes

Heated: Yes
Finished: Yes
Enclosed: Yes
Contiguous: Yes
Permitted: Yes
Wet space: No
Addition: No
Conversion: No

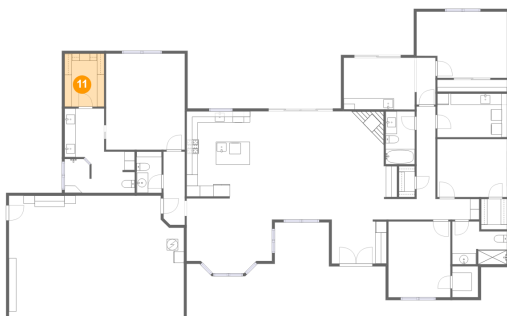
10 Floor 1 - Hall



Max Dimensions: 3'4" x 8'4"
Calculated Area: 28 sq. ft
Included: Yes

Heated: Yes
Finished: Yes
Enclosed: Yes
Contiguous: Yes
Permitted: Yes
Wet space: No
Addition: No
Conversion: No

11 Floor 1 - W.I.C.

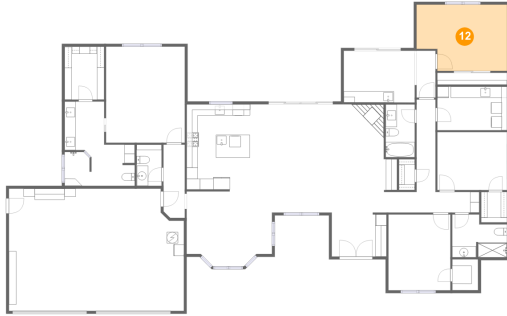


Max Dimensions: 7'0" x 9'5"
Calculated Area: 67 sq. ft
Included: Yes

Heated: Yes
Finished: Yes
Enclosed: Yes
Contiguous: Yes
Permitted: Yes
Wet space: No
Addition: No
Conversion: No

**5633 Rancho La Loma Linda Drive, Paso Robles, San Luis
Obispo County, California, United States, 93446**

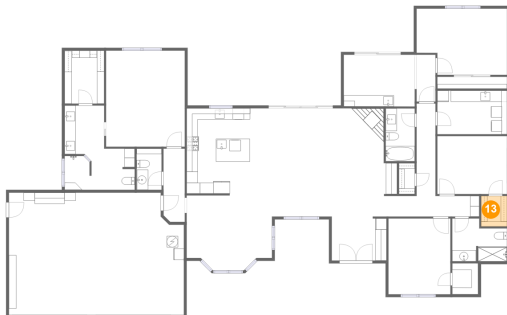
12 Floor 1 - Bedroom



Max Dimensions: 16'2" x 11'10"
Calculated Area: 176 sq. ft
Included: Yes

Heated: Yes
Finished: Yes
Enclosed: Yes
Contiguous: Yes
Permitted: Yes
Wet space: No
Addition: No
Conversion: No

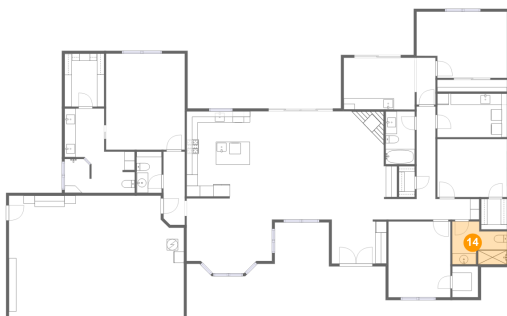
13 Floor 1 - W.I.C.



Max Dimensions: 4'8" x 5'5"
Calculated Area: 25 sq. ft
Included: Yes

Heated: Yes
Finished: Yes
Enclosed: Yes
Contiguous: Yes
Permitted: Yes
Wet space: No
Addition: No
Conversion: No

14 Floor 1 - Bath

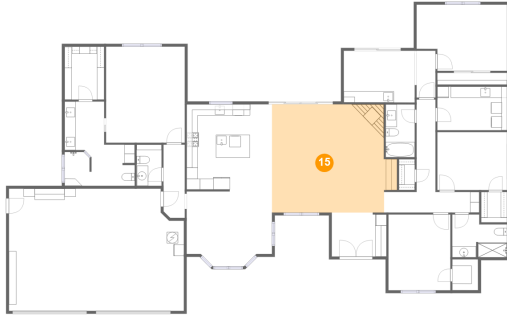


Max Dimensions: 9'9" x 7'8"
Calculated Area: 65 sq. ft
Included: Yes

Heated: Yes
Finished: Yes
Enclosed: Yes
Contiguous: Yes
Permitted: Yes
Wet space: Yes
Addition: No
Conversion: No

5633 Rancho La Loma Linda Drive, Paso Robles, San Luis
Obispo County, California, United States, 93446

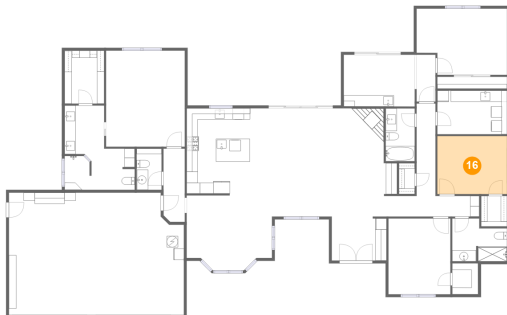
15 Floor 1 - Living Room



Max Dimensions: 22'4" x 19'3"
Calculated Area: 398 sq. ft
Included: Yes

Heated: Yes
Finished: Yes
Enclosed: Yes
Contiguous: Yes
Permitted: Yes
Wet space: No
Addition: No
Conversion: No

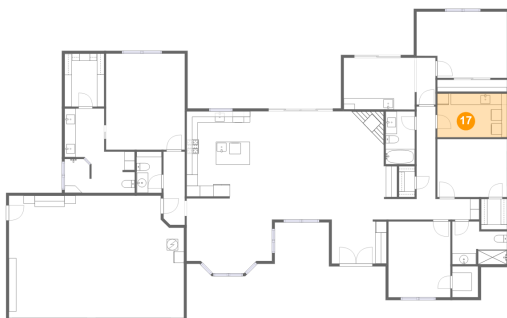
16 Floor 1 - Bedroom



Max Dimensions: 12'5" x 10'4"
Calculated Area: 128 sq. ft
Included: Yes

Heated: Yes
Finished: Yes
Enclosed: Yes
Contiguous: Yes
Permitted: Yes
Wet space: No
Addition: No
Conversion: No

17 Floor 1 - Laundry

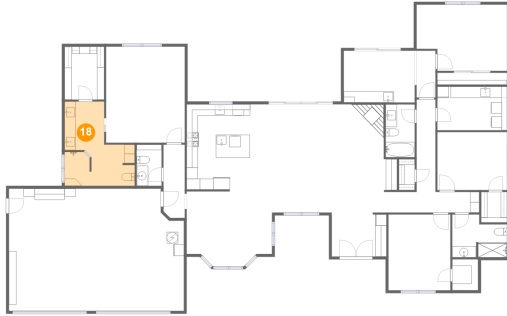


Max Dimensions: 12'5" x 7'9"
Calculated Area: 97 sq. ft
Included: Yes

Heated: Yes
Finished: Yes
Enclosed: Yes
Contiguous: Yes
Permitted: Yes
Wet space: No
Addition: No
Conversion: No

5633 Rancho La Loma Linda Drive, Paso Robles, San Luis
Obispo County, California, United States, 93446

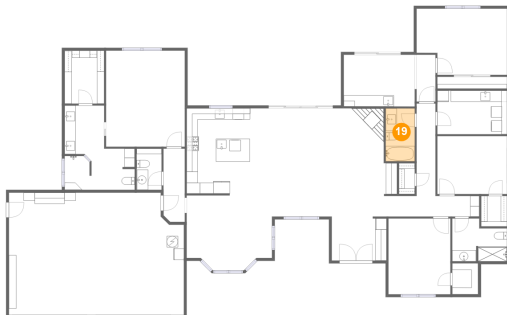
18 Floor 1 - Bath



Max Dimensions: 12'6" x 15'0"
Calculated Area: 143 sq. ft
Included: Yes

Heated: Yes
Finished: Yes
Enclosed: Yes
Contiguous: Yes
Permitted: Yes
Wet space: Yes
Addition: No
Conversion: No

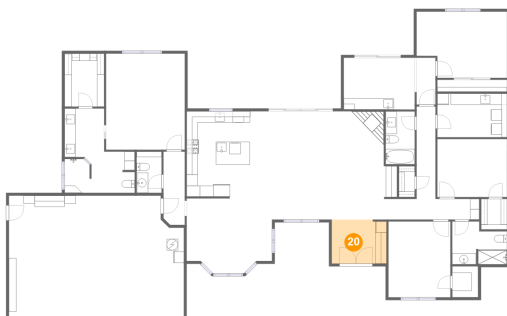
19 Floor 1 - Bath



Max Dimensions: 5'2" x 9'5"
Calculated Area: 49 sq. ft
Included: Yes

Heated: Yes
Finished: Yes
Enclosed: Yes
Contiguous: Yes
Permitted: Yes
Wet space: Yes
Addition: No
Conversion: No

20 Floor 1 - Foyer

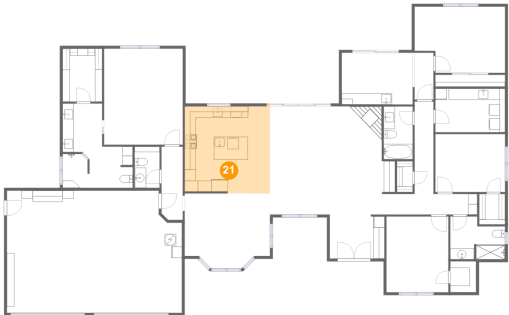


Max Dimensions: 9'9" x 7'10"
Calculated Area: 76 sq. ft
Included: Yes

Heated: Yes
Finished: Yes
Enclosed: Yes
Contiguous: Yes
Permitted: Yes
Wet space: No
Addition: No
Conversion: No

5633 Rancho La Loma Linda Drive, Paso Robles, San Luis
Obispo County, California, United States, 93446

21 Floor 1 - Kitchen



Max Dimensions: 15'2" x 16'0"
Calculated Area: 234 sq. ft
Included: Yes

Heated: Yes
Finished: Yes
Enclosed: Yes
Contiguous: Yes
Permitted: Yes
Wet space: No
Addition: No
Conversion: No