


# 551 Dugan Way, New Kensington, Westmoreland County, Pennsylvania, United States, 15068



## Property summary

 **1** Garages

 **2** Bedrooms

 **3** Bathrooms

 **0** Half baths

 **3** Floors

 **1,971** Gross living area sqft

 **4,055** Total sqft

# 551 Dugan Way, New Kensington, Westmoreland County, Pennsylvania, United States, 15068



## Room dimensions

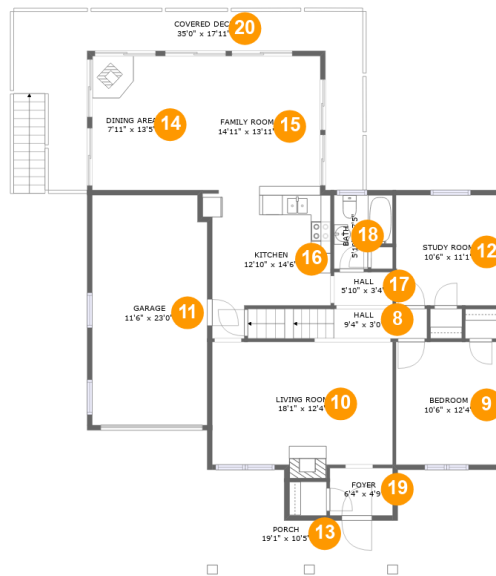
Floor 1

Total sqft: 1463

Living area: 337

#		Dimensions	sqft	Counted as living area
1	Storage	11'8" x 11'1"	128 sq. ft	No
2	Room	16'2" x 12'4"	199 sq. ft	No
3	Outdoor	31'8" x 11'10"	337 sq. ft	No
4	Bath	12'5" x 6'0"	72 sq. ft	Yes
5	Utility	16'2" x 14'4"	207 sq. ft	Yes
6	Basement	11'8" x 11'8"	136 sq. ft	No
7	Recreation Room	12'5" x 20'8"	257 sq. ft	No

# 551 Dugan Way, New Kensington, Westmoreland County, Pennsylvania, United States, 15068



## Room dimensions

Floor 2

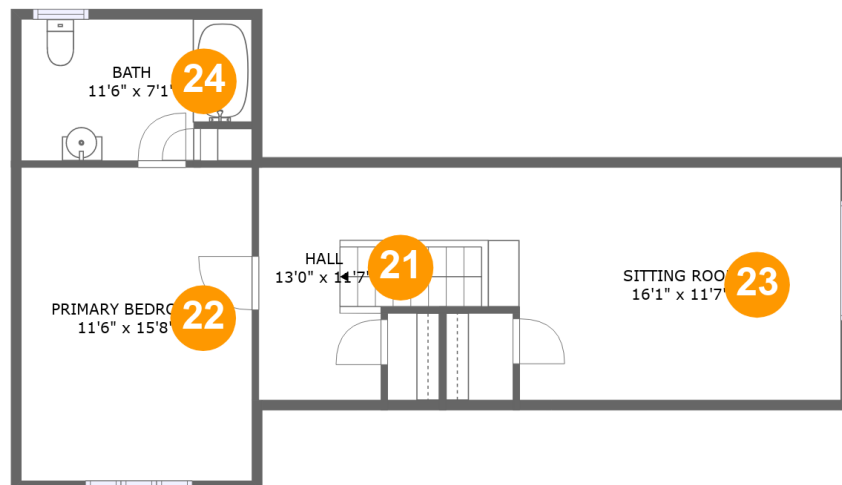
Total sqft: 1919 Living area: 1237

#		Dimensions	sqft	Counted as living area
8	Hall	9'4" x 3'0"	54 sq. ft	Yes
9	Bedroom	10'6" x 12'4"	129 sq. ft	Yes
10	Living Room	18'1" x 12'4"	228 sq. ft	Yes
11	Garage	11'6" x 23'0"	263 sq. ft	No
12	Room	10'6" x 11'1"	116 sq. ft	Yes
13	Outdoor	19'1" x 10'5"	141 sq. ft	No
14	Dining Room	7'11" x 13'5"	107 sq. ft	Yes
15	Living Room	14'11" x 13'11"	206 sq. ft	Yes
16	Kitchen	12'10" x 14'6"	144 sq. ft	Yes
17	Hall	5'10" x 3'4"	20 sq. ft	Yes
18	Bath	5'10" x 7'5"	43 sq. ft	Yes

# 551 Dugan Way, New Kensington, Westmoreland County, Pennsylvania, United States, 15068

#		Dimensions	sqft	Counted as living area
19	Entry	6'4" x 4'9"	30 sq. ft	Yes
20	Outdoor	35'0" x 17'11"	260 sq. ft	No

# 551 Dugan Way, New Kensington, Westmoreland County, Pennsylvania, United States, 15068



## Room dimensions

Floor 3

Total sqft: 673 Living area: 397

#		Dimensions	sqft	Counted as living area
21	Hall	13'0" x 11'7"	94 sq. ft	Yes
22	Bedroom	11'6" x 15'8"	180 sq. ft	Yes
23	Living Room	16'1" x 11'7"	143 sq. ft	No
24	Bath	11'6" x 7'1"	76 sq. ft	Yes

# 551 Dugan Way, New Kensington, Westmoreland County, Pennsylvania, United States, 15068

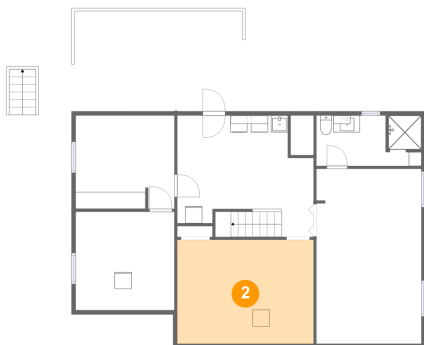
## 1 Floor 1 - Storage



Dimensions: 11'8" x 11'1"  
Area: 128 sq. ft  
Counted as living area: No

Heated: No  
Finished: No  
Enclosed: No  
Contiguous: Yes  
Permitted: Yes  
Wet space: No  
Addition: No  
Conversion: No

## 2 Floor 1 - Room



Dimensions: 16'2" x 12'4"  
Area: 199 sq. ft  
Counted as living area: No

Heated: No  
Finished: No  
Enclosed: Yes  
Contiguous: Yes  
Permitted: Yes  
Wet space: No  
Addition: No  
Conversion: No

# 551 Dugan Way, New Kensington, Westmoreland County, Pennsylvania, United States, 15068

## 3 Floor 1 - Outdoor



Dimensions: 31'8" x 11'10"  
Area: 337 sq. ft  
Counted as living area: No

Heated: No  
Finished: Yes  
Enclosed: No  
Contiguous: Yes  
Permitted: Yes  
Wet space: No  
Addition: No  
Conversion: No

## 4 Floor 1 - Bath



Dimensions: 12'5" x 6'0"  
Area: 72 sq. ft  
Counted as living area: Yes

Heated: Yes  
Finished: Yes  
Enclosed: Yes  
Contiguous: Yes  
Permitted: Yes  
Wet space: Yes  
Addition: No  
Conversion: No

## 5 Floor 1 - Utility

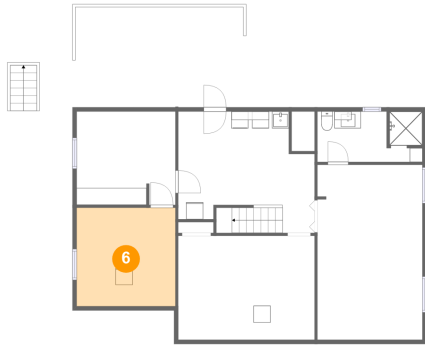


Dimensions: 16'2" x 14'4"  
Area: 207 sq. ft  
Counted as living area: Yes

Heated: Yes  
Finished: Yes  
Enclosed: Yes  
Contiguous: Yes  
Permitted: Yes  
Wet space: No  
Addition: No  
Conversion: No

# 551 Dugan Way, New Kensington, Westmoreland County, Pennsylvania, United States, 15068

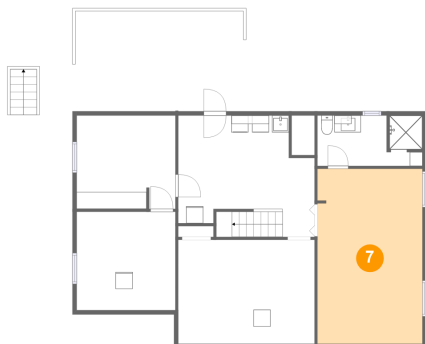
## 6 Floor 1 - Basement



Dimensions: 11'8" x 11'8"  
Area: 136 sq. ft  
Counted as living area: No

Heated: Yes  
Finished: No  
Enclosed: Yes  
Contiguous: Yes  
Permitted: Yes  
Wet space: No  
Addition: No  
Conversion: No

## 7 Floor 1 - Recreation Room



Dimensions: 12'5" x 20'8"  
Area: 257 sq. ft  
Counted as living area: No

Heated: Yes  
Finished: Yes  
Enclosed: Yes  
Contiguous: Yes  
Permitted: Yes  
Wet space: No  
Addition: No  
Conversion: No

## 8 Floor 2 - Hall



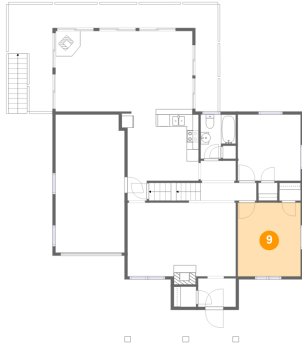
Dimensions: 9'4" x 3'0"  
Area: 54 sq. ft  
Counted as living area: Yes

Heated: Yes  
Finished: Yes  
Enclosed: Yes  
Contiguous: Yes  
Permitted: Yes  
Wet space: No  
Addition: No  
Conversion: No



# 551 Dugan Way, New Kensington, Westmoreland County, Pennsylvania, United States, 15068

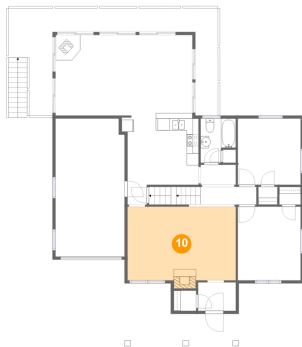
## 9 Floor 2 - Bedroom



Dimensions: 10'6" x 12'4"  
Area: 129 sq. ft  
Counted as living area: Yes

Heated: Yes  
Finished: Yes  
Enclosed: Yes  
Contiguous: Yes  
Permitted: Yes  
Wet space: No  
Addition: No  
Conversion: No

## 10 Floor 2 - Living Room



Dimensions: 18'1" x 12'4"  
Area: 228 sq. ft  
Counted as living area: Yes

Heated: Yes  
Finished: Yes  
Enclosed: Yes  
Contiguous: Yes  
Permitted: Yes  
Wet space: No  
Addition: No  
Conversion: No

## 11 Floor 2 - Garage

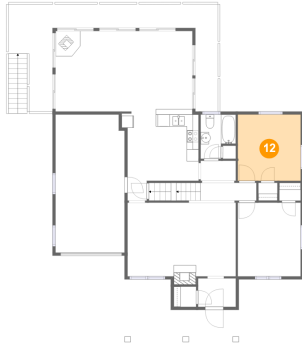


Dimensions: 11'6" x 23'0"  
Area: 263 sq. ft  
Counted as living area: No

Heated: No  
Finished: No  
Enclosed: Yes  
Contiguous: Yes  
Permitted: Yes  
Wet space: No  
Addition: No  
Conversion: No

# 551 Dugan Way, New Kensington, Westmoreland County, Pennsylvania, United States, 15068

## 12 Floor 2 - Room



Dimensions: 10'6" x 11'1"  
Area: 116 sq. ft  
Counted as living area: Yes

Heated: Yes  
Finished: Yes  
Enclosed: Yes  
Contiguous: Yes  
Permitted: Yes  
Wet space: No  
Addition: No  
Conversion: No

## 13 Floor 2 - Outdoor



Dimensions: 19'1" x 10'5"  
Area: 141 sq. ft  
Counted as living area: No

Heated: No  
Finished: Yes  
Enclosed: No  
Contiguous: Yes  
Permitted: Yes  
Wet space: No  
Addition: No  
Conversion: No

## 14 Floor 2 - Dining Room

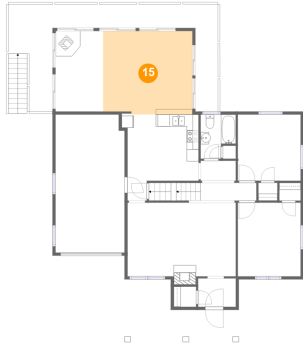


Dimensions: 7'11" x 13'5"  
Area: 107 sq. ft  
Counted as living area: Yes

Heated: Yes  
Finished: Yes  
Enclosed: Yes  
Contiguous: Yes  
Permitted: Yes  
Wet space: No  
Addition: No  
Conversion: No

# 551 Dugan Way, New Kensington, Westmoreland County, Pennsylvania, United States, 15068

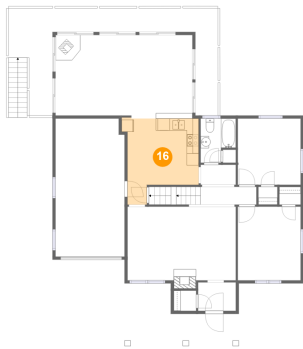
## 15 Floor 2 - Living Room



Dimensions: 14'11" x 13'11"  
Area: 206 sq. ft  
Counted as living area: Yes

Heated: Yes  
Finished: Yes  
Enclosed: Yes  
Contiguous: Yes  
Permitted: Yes  
Wet space: No  
Addition: No  
Conversion: No

## 16 Floor 2 - Kitchen



Dimensions: 12'10" x 14'6"  
Area: 144 sq. ft  
Counted as living area: Yes

Heated: Yes  
Finished: Yes  
Enclosed: Yes  
Contiguous: Yes  
Permitted: Yes  
Wet space: No  
Addition: No  
Conversion: No

## 17 Floor 2 - Hall



Dimensions: 5'10" x 3'4"  
Area: 20 sq. ft  
Counted as living area: Yes

Heated: Yes  
Finished: Yes  
Enclosed: Yes  
Contiguous: Yes  
Permitted: Yes  
Wet space: No  
Addition: No  
Conversion: No

# 551 Dugan Way, New Kensington, Westmoreland County, Pennsylvania, United States, 15068

## 18 Floor 2 - Bath



Dimensions: 5'10" x 7'5"  
Area: 43 sq. ft  
Counted as living area: Yes

Heated: Yes  
Finished: Yes  
Enclosed: Yes  
Contiguous: Yes  
Permitted: Yes  
Wet space: Yes  
Addition: No  
Conversion: No

## 19 Floor 2 - Entry



Dimensions: 6'4" x 4'9"  
Area: 30 sq. ft  
Counted as living area: Yes

Heated: Yes  
Finished: Yes  
Enclosed: Yes  
Contiguous: Yes  
Permitted: Yes  
Wet space: No  
Addition: No  
Conversion: No

## 20 Floor 2 - Outdoor

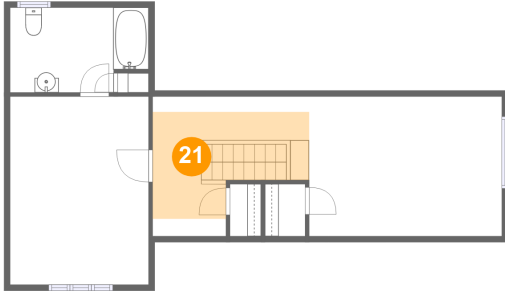


Dimensions: 35'0" x 17'11"  
Area: 260 sq. ft  
Counted as living area: No

Heated: No  
Finished: Yes  
Enclosed: No  
Contiguous: Yes  
Permitted: Yes  
Wet space: No  
Addition: No  
Conversion: No

# 551 Dugan Way, New Kensington, Westmoreland County, Pennsylvania, United States, 15068

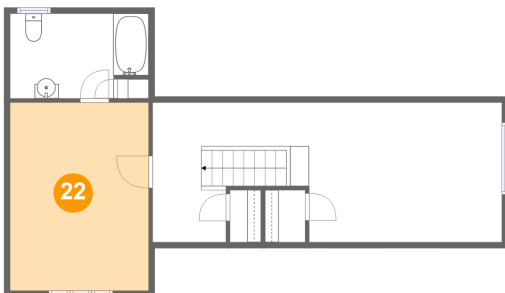
## 21 Floor 3 - Hall



Dimensions: 13'0" x 11'7"  
Area: 94 sq. ft  
Counted as living area: Yes

Heated: Yes  
Finished: Yes  
Enclosed: Yes  
Contiguous: Yes  
Permitted: Yes  
Wet space: No  
Addition: No  
Conversion: No

## 22 Floor 3 - Bedroom



Dimensions: 11'6" x 15'8"  
Area: 180 sq. ft  
Counted as living area: Yes

Heated: Yes  
Finished: Yes  
Enclosed: Yes  
Contiguous: Yes  
Permitted: Yes  
Wet space: No  
Addition: No  
Conversion: No

## 23 Floor 3 - Living Room

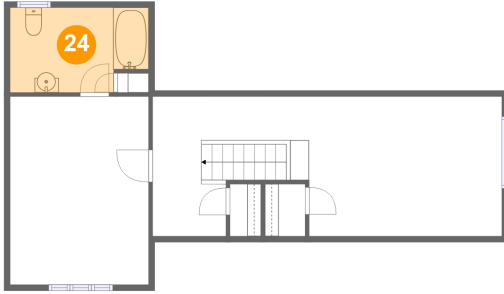


Dimensions: 16'1" x 11'7"  
Area: 143 sq. ft  
Counted as living area: No

Heated: Yes  
Finished: Yes  
Enclosed: Yes  
Contiguous: Yes  
Permitted: Yes  
Wet space: No  
Addition: No  
Conversion: No

# 551 Dugan Way, New Kensington, Westmoreland County, Pennsylvania, United States, 15068

## 24 Floor 3 - Bath



Dimensions: 11'6" x 7'1"  
Area: 76 sq. ft  
Counted as living area: Yes

Heated: Yes  
Finished: Yes  
Enclosed: Yes  
Contiguous: Yes  
Permitted: Yes  
Wet space: Yes  
Addition: No  
Conversion: No