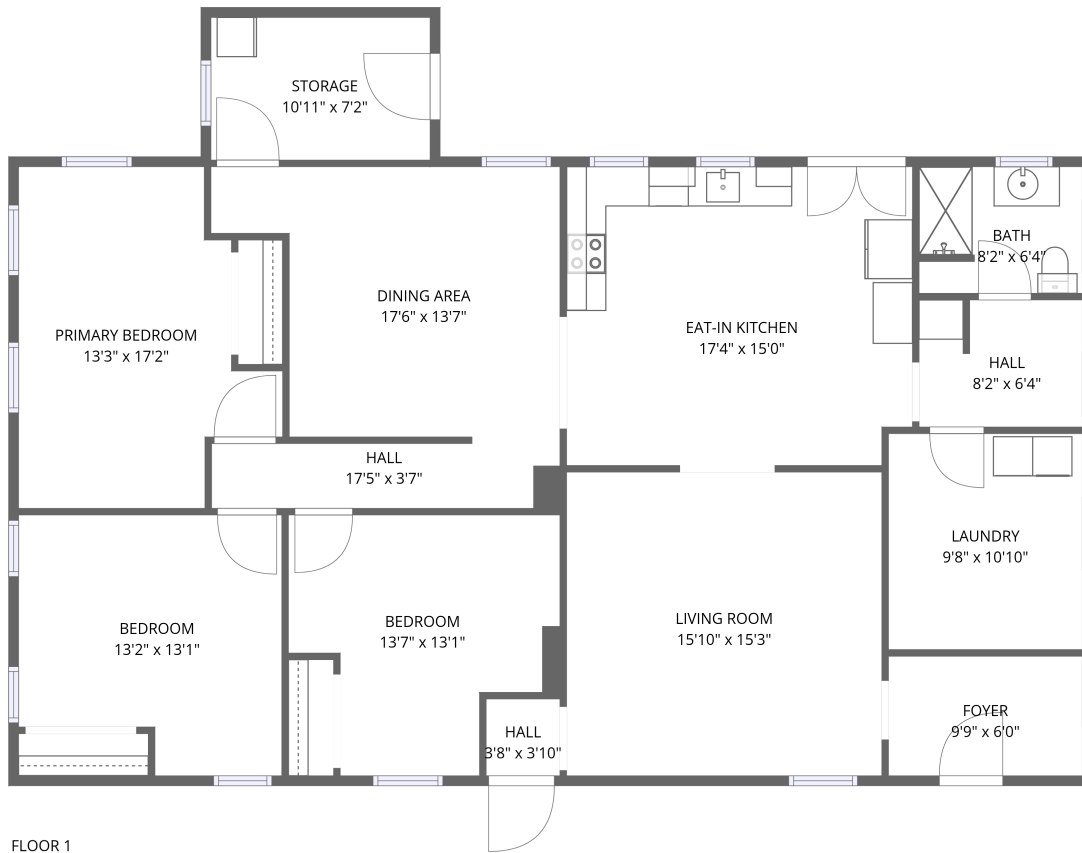


Home report

9470 Butcher Rd, Mt Vernon, OH, US



**Total Area: 1633 sq. ft**

Floor 1: 1633 sq. ft

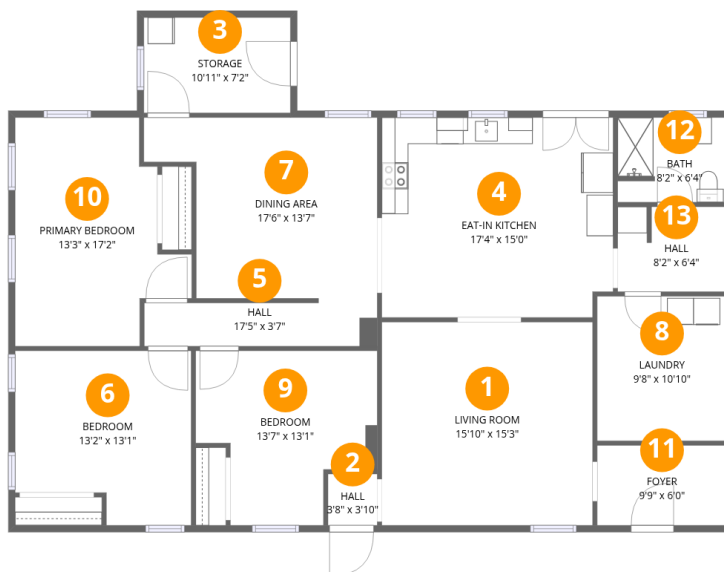
Excluded: Storage 79 sq. ft, Walls: 93 sq. ft

## Property summary

 **1** Floors

 **3** Bedrooms

 **1** Bathrooms



## Room dimensions

Floor 1

Total: 1633 sqft

Excluded: 79 sqft

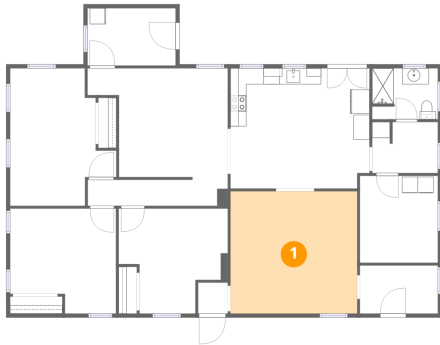
#		Max Dimensions	sqft	Included
1	Living Room	15'10" x 15'3"	241 sq. ft	Yes
2	Hall	3'8" x 3'10"	14 sq. ft	Yes
3	Storage	10'11" x 7'2"	79 sq. ft	No
4	Eat-in Kitchen	17'4" x 15'0"	257 sq. ft	Yes
5	Hall	17'5" x 3'7"	58 sq. ft	Yes
6	Bedroom	13'2" x 13'1"	156 sq. ft	Yes
7	Dining Area	17'6" x 13'7"	197 sq. ft	Yes
8	Laundry	9'8" x 10'10"	105 sq. ft	Yes
9	Bedroom	13'7" x 13'1"	145 sq. ft	Yes
10	Primary Bedroom	13'3" x 17'2"	182 sq. ft	Yes
11	Foyer	9'9" x 6'0"	58 sq. ft	Yes

Home report

## 9470 Butcher Rd,Mt Vernon,OH,US

#		Max Dimensions	sqft	Included
12	Bath	8'2" x 6'4"	51 sq. ft	Yes
13	Hall	8'2" x 6'4"	51 sq. ft	Yes

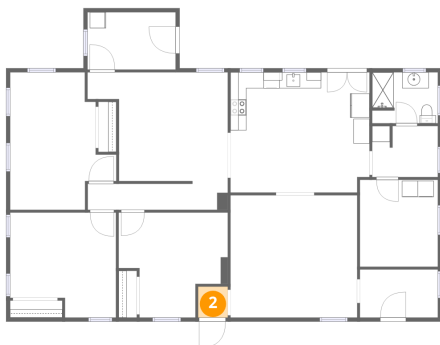
## 1 Floor 1 - Living Room



**Max Dimensions:** 15'10" x 15'3"  
**Calculated Area:** 241 sq. ft  
**Included:** Yes

**Heated:** Yes  
**Finished:** Yes  
**Enclosed:** Yes  
**Contiguous:** Yes  
**Permitted:** Yes  
**Wet space:** No  
**Addition:** No  
**Conversion:** No

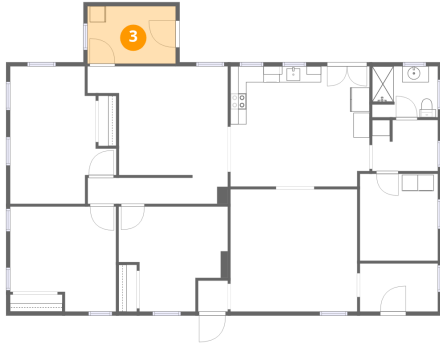
## 2 Floor 1 - Hall



**Max Dimensions:** 3'8" x 3'10"  
**Calculated Area:** 14 sq. ft  
**Included:** Yes

**Heated:** Yes  
**Finished:** Yes  
**Enclosed:** Yes  
**Contiguous:** Yes  
**Permitted:** Yes  
**Wet space:** No  
**Addition:** No  
**Conversion:** No

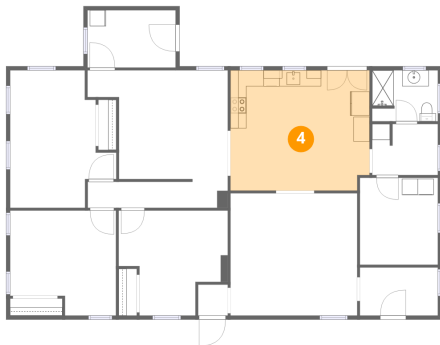
### 3 Floor 1 - Storage



Max Dimensions: 10'11" x 7'2"  
Calculated Area: 79 sq. ft  
Included: No

Heated: No  
Finished: No  
Enclosed: No  
Contiguous: Yes  
Permitted: Yes  
Wet space: No  
Addition: No  
Conversion: No

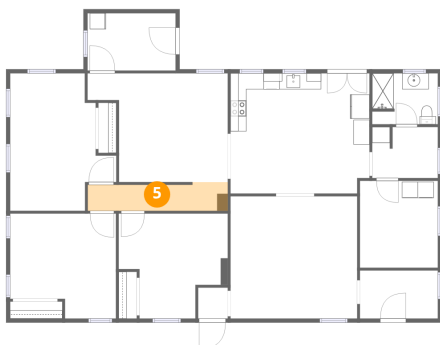
### 4 Floor 1 - Eat-in Kitchen



Max Dimensions: 17'4" x 15'0"  
Calculated Area: 257 sq. ft  
Included: Yes

Heated: Yes  
Finished: Yes  
Enclosed: Yes  
Contiguous: Yes  
Permitted: Yes  
Wet space: No  
Addition: No  
Conversion: No

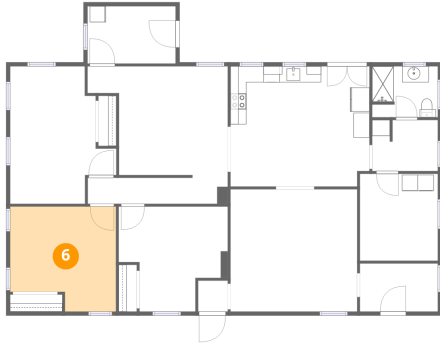
### 5 Floor 1 - Hall



Max Dimensions: 17'5" x 3'7"  
Calculated Area: 58 sq. ft  
Included: Yes

Heated: Yes  
Finished: Yes  
Enclosed: Yes  
Contiguous: Yes  
Permitted: Yes  
Wet space: No  
Addition: No  
Conversion: No

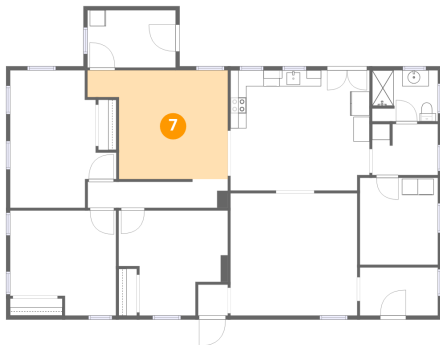
## 6 Floor 1 - Bedroom



Max Dimensions: 13'2" x 13'1"  
Calculated Area: 156 sq. ft  
Included: Yes

Heated: Yes  
Finished: Yes  
Enclosed: Yes  
Contiguous: Yes  
Permitted: Yes  
Wet space: No  
Addition: No  
Conversion: No

## 7 Floor 1 - Dining Area



Max Dimensions: 17'6" x 13'7"  
Calculated Area: 197 sq. ft  
Included: Yes

Heated: Yes  
Finished: Yes  
Enclosed: Yes  
Contiguous: Yes  
Permitted: Yes  
Wet space: No  
Addition: No  
Conversion: No

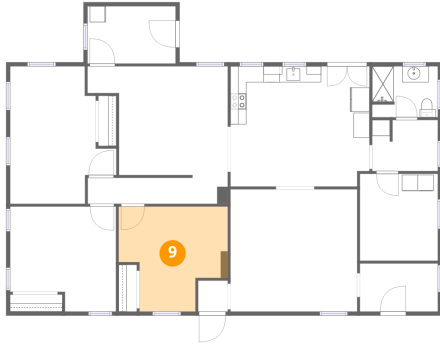
## 8 Floor 1 - Laundry



Max Dimensions: 9'8" x 10'10"  
Calculated Area: 105 sq. ft  
Included: Yes

Heated: Yes  
Finished: Yes  
Enclosed: Yes  
Contiguous: Yes  
Permitted: Yes  
Wet space: No  
Addition: No  
Conversion: No

### 9 Floor 1 - Bedroom



Max Dimensions: 13'7" x 13'1"  
Calculated Area: 145 sq. ft  
Included: Yes

Heated: Yes  
Finished: Yes  
Enclosed: Yes  
Contiguous: Yes  
Permitted: Yes  
Wet space: No  
Addition: No  
Conversion: No

### 10 Floor 1 - Primary Bedroom



Max Dimensions: 13'3" x 17'2"  
Calculated Area: 182 sq. ft  
Included: Yes

Heated: Yes  
Finished: Yes  
Enclosed: Yes  
Contiguous: Yes  
Permitted: Yes  
Wet space: No  
Addition: No  
Conversion: No

### 11 Floor 1 - Foyer



Max Dimensions: 9'9" x 6'0"  
Calculated Area: 58 sq. ft  
Included: Yes

Heated: Yes  
Finished: Yes  
Enclosed: Yes  
Contiguous: Yes  
Permitted: Yes  
Wet space: No  
Addition: No  
Conversion: No

## 12 Floor 1 - Bath



Max Dimensions: 8'2" x 6'4"  
Calculated Area: 51 sq. ft  
Included: Yes

Heated: Yes  
Finished: Yes  
Enclosed: Yes  
Contiguous: Yes  
Permitted: Yes  
Wet space: Yes  
Addition: No  
Conversion: No

## 13 Floor 1 - Hall



Max Dimensions: 8'2" x 6'4"  
Calculated Area: 51 sq. ft  
Included: Yes

Heated: Yes  
Finished: Yes  
Enclosed: Yes  
Contiguous: Yes  
Permitted: Yes  
Wet space: No  
Addition: No  
Conversion: No