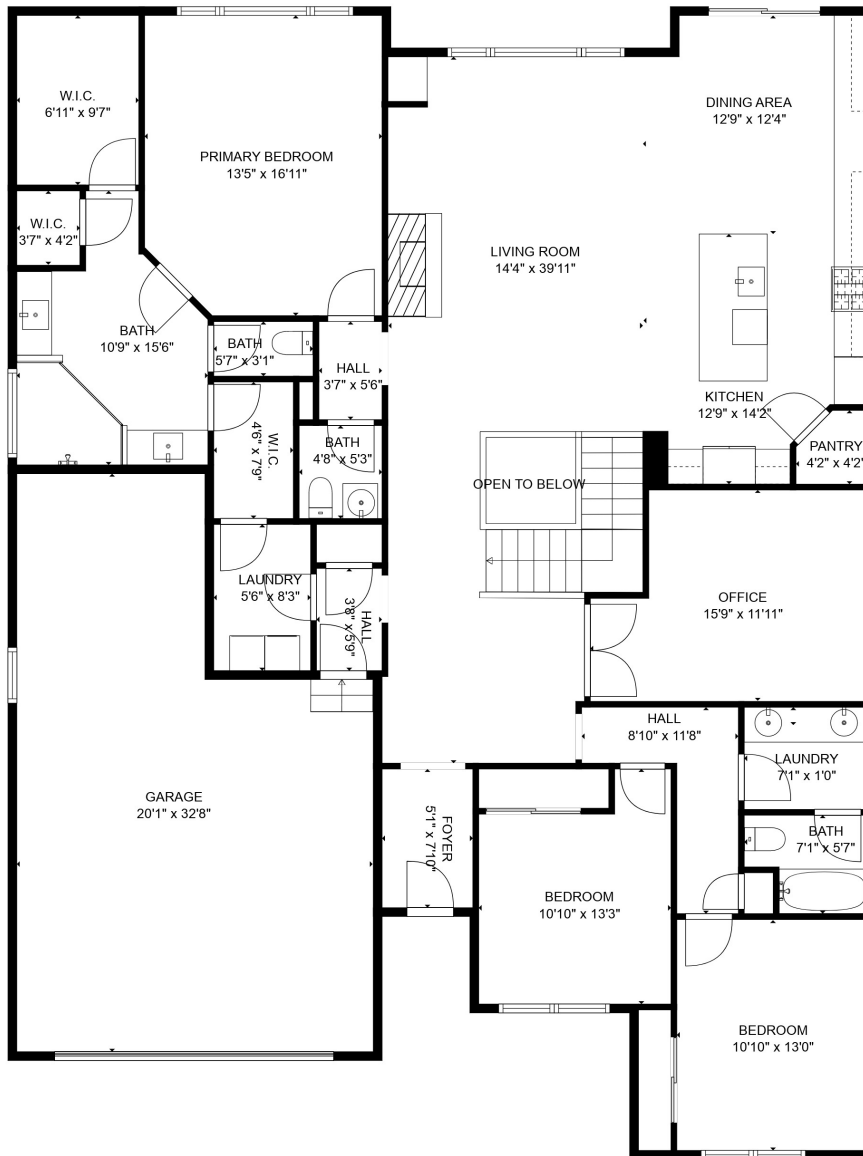


TOTAL: 3561 sq. ft
 Below Ground: 1377 sq. ft, FLOOR 2: 2184 sq. ft
 EXCLUDED AREAS: BASEMENT: 609 sq. ft, ELECTRICAL ROOM: 152 sq. ft, GARAGE: 547 sq. ft,
 OPEN TO BELOW: 25 sq. ft

SIZES AND DIMENSIONS ARE APPROXIMATE, ACTUAL MAY VARY.

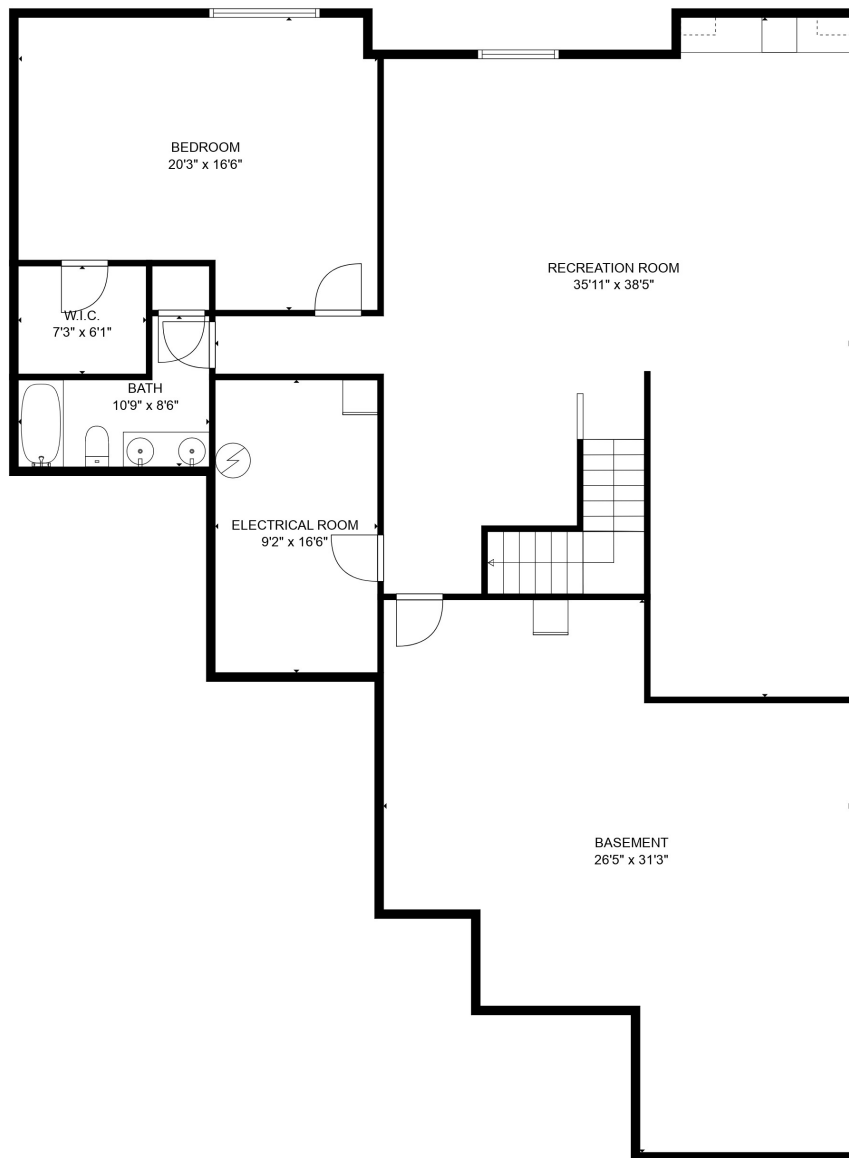


TOTAL: 3561 sq. ft

Below Ground: 1377 sq. ft, FLOOR 2: 2184 sq. ft

EXCLUDED AREAS: BASEMENT: 609 sq. ft, ELECTRICAL ROOM: 152 sq. ft, GARAGE: 547 sq. ft, OPEN TO BELOW: 25 sq. ft

SIZES AND DIMENSIONS ARE APPROXIMATE, ACTUAL MAY VARY.



TOTAL: 3561 sq. ft

Below Ground: 1377 sq. ft, FLOOR 2: 2184 sq. ft

EXCLUDED AREAS: BASEMENT: 609 sq. ft, ELECTRICAL ROOM: 152 sq. ft, GARAGE: 547 sq. ft,
OPEN TO BELOW: 25 sq. ft

SIZES AND DIMENSIONS ARE APPROXIMATE, ACTUAL MAY VARY.