



608 Orlando Avenue, Plantation Court, Hollins,
Roanoke County, Virginia, United States, 24019




Property summary




0
Garages



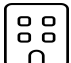
3
Bedrooms




1
Bathrooms




0
Half baths



2
Floors

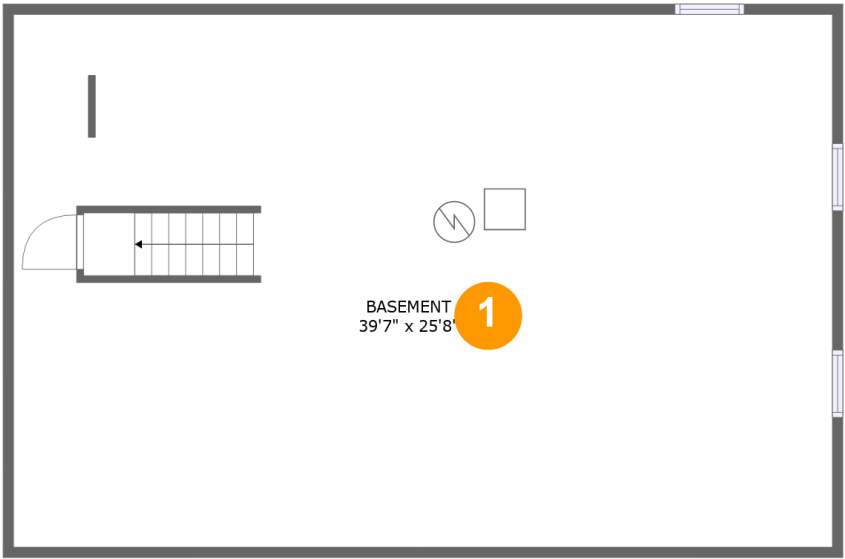


1,083
Gross living
area sqft



2,844
Total sqft

608 Orlando Avenue, Plantation Court, Hollins,
Roanoke County, Virginia, United States, 24019

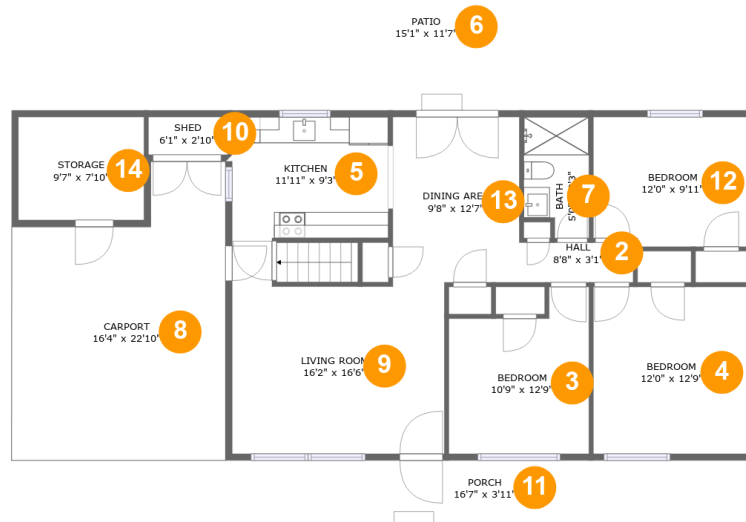


Room dimensions

Floor 1 Total sqft: 1084 Living area: 0

#		Dimensions	sqft	Counted as living area
1	Basement	39'7" x 25'8"	1018 sq. ft	No

608 Orlando Avenue, Plantation Court, Hollins, Roanoke County, Virginia, United States, 24019



Room dimensions

Floor 2

Total sqft: 1760 Living area: 1083

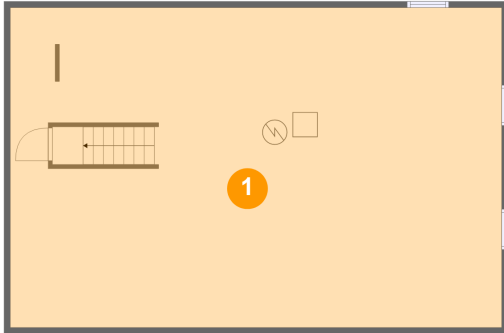
#		Dimensions	sqft	Counted as living area
2	Hall	8'8" x 3'1"	26 sq. ft	Yes
3	Bedroom	10'9" x 12'9"	118 sq. ft	Yes
4	Bedroom	12'0" x 12'9"	153 sq. ft	Yes
5	Kitchen	11'11" x 9'3"	110 sq. ft	Yes
6	Patio	15'1" x 11'7"	175 sq. ft	No
7	Bath	5'0" x 9'3"	42 sq. ft	Yes
8	Carport	16'4" x 22'10"	320 sq. ft	No
9	Living Room	16'2" x 16'6"	220 sq. ft	Yes
10	Shed	6'1" x 2'10"	18 sq. ft	No
11	Porch	16'7" x 3'11"	65 sq. ft	No
12	Bedroom	12'0" x 9'11"	116 sq. ft	Yes

608 Orlando Avenue, Plantation Court, Hollins,
Roanoke County, Virginia, United States, 24019

#		Dimensions	sqft	Counted as living area
13	Dining Area	9'8" x 12'7"	122 sq. ft	Yes
14	Storage	9'7" x 7'10"	76 sq. ft	No

**608 Orlando Avenue, Plantation Court, Hollins,
Roanoke County, Virginia, United States, 24019**

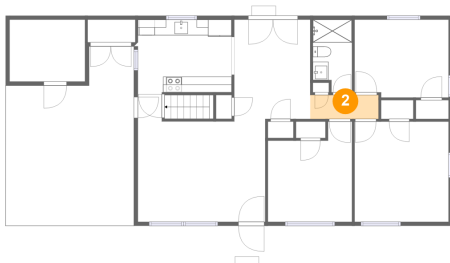
1 Floor 1 - Basement



Dimensions: 39'7" x 25'8"
Area: 1018 sq. ft
Counted as living area: No

Heated: No
Finished: No
Enclosed: Yes
Contiguous: Yes
Permitted: Yes
Wet space: No
Addition: No
Conversion: No

2 Floor 2 - Hall

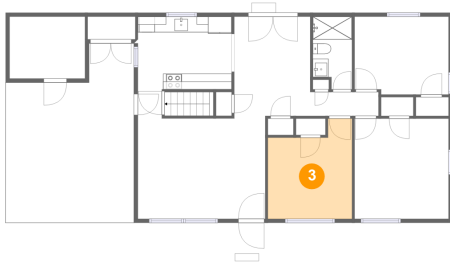


Dimensions: 8'8" x 3'1"
Area: 26 sq. ft
Counted as living area: Yes

Heated: Yes
Finished: Yes
Enclosed: Yes
Contiguous: Yes
Permitted: Yes
Wet space: No
Addition: No
Conversion: No

608 Orlando Avenue, Plantation Court, Hollins,
Roanoke County, Virginia, United States, 24019

3 Floor 2 - Bedroom



Dimensions: 10'9" x 12'9"
Area: 118 sq. ft
Counted as living area: Yes

Heated: Yes
Finished: Yes
Enclosed: Yes
Contiguous: Yes
Permitted: Yes
Wet space: No
Addition: No
Conversion: No

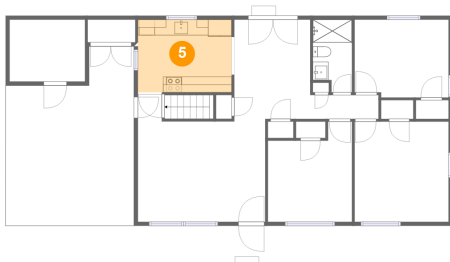
4 Floor 2 - Bedroom



Dimensions: 12'0" x 12'9"
Area: 153 sq. ft
Counted as living area: Yes

Heated: Yes
Finished: Yes
Enclosed: Yes
Contiguous: Yes
Permitted: Yes
Wet space: No
Addition: No
Conversion: No

5 Floor 2 - Kitchen

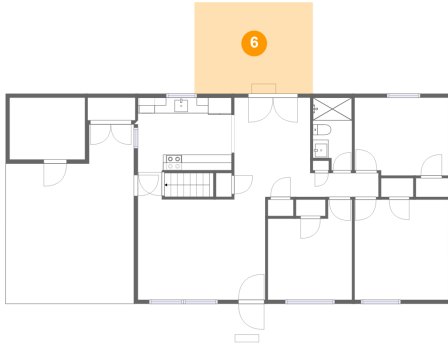


Dimensions: 11'11" x 9'3"
Area: 110 sq. ft
Counted as living area: Yes

Heated: Yes
Finished: Yes
Enclosed: Yes
Contiguous: Yes
Permitted: Yes
Wet space: No
Addition: No
Conversion: No

608 Orlando Avenue, Plantation Court, Hollins,
Roanoke County, Virginia, United States, 24019

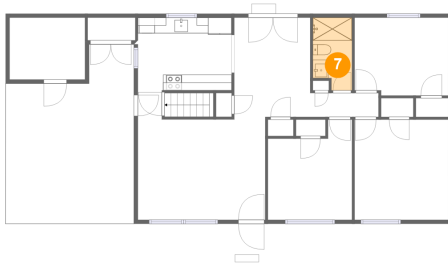
6 Floor 2 - Patio



Dimensions: 15'1" x 11'7"
Area: 175 sq. ft
Counted as living area: No

Heated: No
Finished: Yes
Enclosed: No
Contiguous: Yes
Permitted: Yes
Wet space: No
Addition: No
Conversion: No

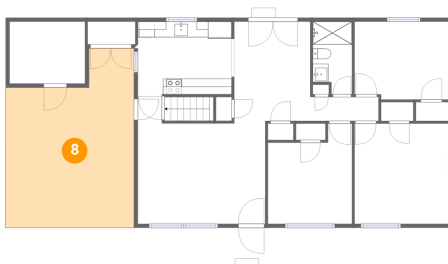
7 Floor 2 - Bath



Dimensions: 5'0" x 9'3"
Area: 42 sq. ft
Counted as living area: Yes

Heated: Yes
Finished: Yes
Enclosed: Yes
Contiguous: Yes
Permitted: Yes
Wet space: Yes
Addition: No
Conversion: No

8 Floor 2 - Carport

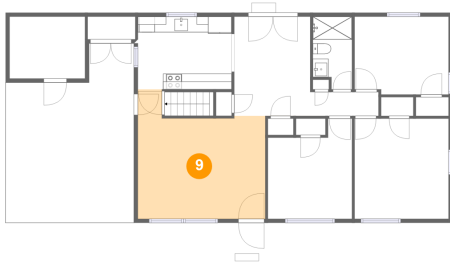


Dimensions: 16'4" x 22'10"
Area: 320 sq. ft
Counted as living area: No

Heated: No
Finished: Yes
Enclosed: No
Contiguous: Yes
Permitted: Yes
Wet space: No
Addition: No
Conversion: No

608 Orlando Avenue, Plantation Court, Hollins,
Roanoke County, Virginia, United States, 24019

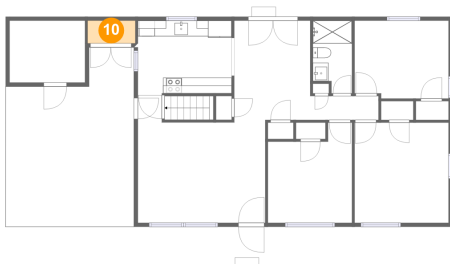
9 Floor 2 - Living Room



Dimensions: 16'2" x 16'6"
Area: 220 sq. ft
Counted as living area: Yes

Heated: Yes
Finished: Yes
Enclosed: Yes
Contiguous: Yes
Permitted: Yes
Wet space: No
Addition: No
Conversion: No

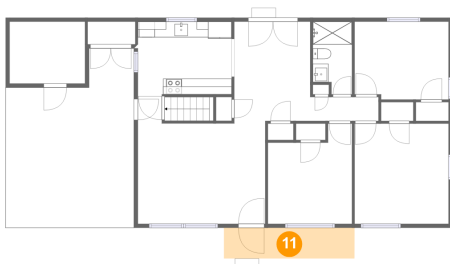
10 Floor 2 - Shed



Dimensions: 6'1" x 2'10"
Area: 18 sq. ft
Counted as living area: No

Heated: No
Finished: No
Enclosed: No
Contiguous: Yes
Permitted: Yes
Wet space: No
Addition: No
Conversion: No

11 Floor 2 - Porch



Dimensions: 16'7" x 3'11"
Area: 65 sq. ft
Counted as living area: No

Heated: No
Finished: Yes
Enclosed: No
Contiguous: Yes
Permitted: Yes
Wet space: No
Addition: No
Conversion: No

608 Orlando Avenue, Plantation Court, Hollins,
Roanoke County, Virginia, United States, 24019

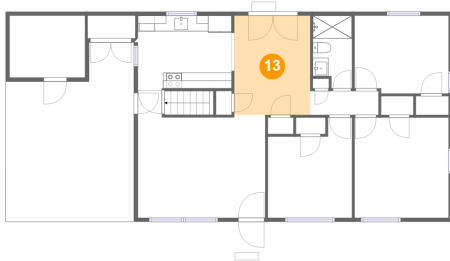
12 Floor 2 - Bedroom



Dimensions: 12'0" x 9'11"
Area: 116 sq. ft
Counted as living area: Yes

Heated: Yes
Finished: Yes
Enclosed: Yes
Contiguous: Yes
Permitted: Yes
Wet space: No
Addition: No
Conversion: No

13 Floor 2 - Dining Area



Dimensions: 9'8" x 12'7"
Area: 122 sq. ft
Counted as living area: Yes

Heated: Yes
Finished: Yes
Enclosed: Yes
Contiguous: Yes
Permitted: Yes
Wet space: No
Addition: No
Conversion: No

14 Floor 2 - Storage



Dimensions: 9'7" x 7'10"
Area: 76 sq. ft
Counted as living area: No

Heated: No
Finished: No
Enclosed: No
Contiguous: Yes
Permitted: Yes
Wet space: No
Addition: No
Conversion: No