

2204 East Broad Street, Church Hill, Richmond, Richmond, Virginia, United States, 23223




Property Summary

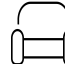
 **0** garages

 **3** bedrooms

 **3** bathrooms

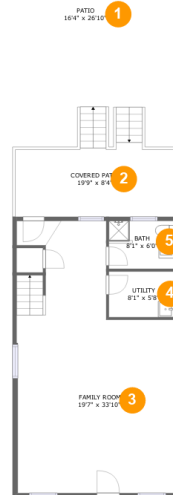
 **1** half baths

 **4** floors

 **2,641** Gross Living Area sqft

 **3,494** total sqft

2204 East Broad Street, Church Hill, Richmond, Richmond, Virginia, United States, 23223

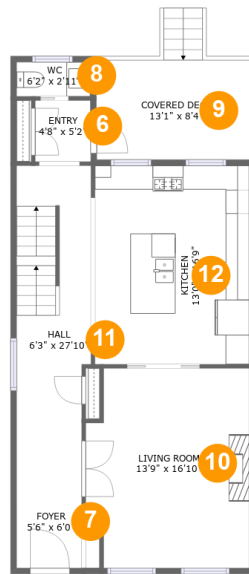


Room Dimensions

Floor 1**Total sqft: 1315****Living area: 703**

#	Room name	Dimensions	Area (sqft)	Counted as Living Area
1	Patio	16'4" x 26'10"	419 sq. ft	No
2	Covered Patio	19'9" x 8'4"	182 sq. ft	No
3	Family Room	19'7" x 33'10"	542 sq. ft	Yes
4	Utility	8'1" x 5'8"	46 sq. ft	Yes
5	Bath	8'1" x 6'0"	48 sq. ft	Yes

2204 East Broad Street, Church Hill, Richmond, Richmond, Virginia, United States, 23223



Room Dimensions

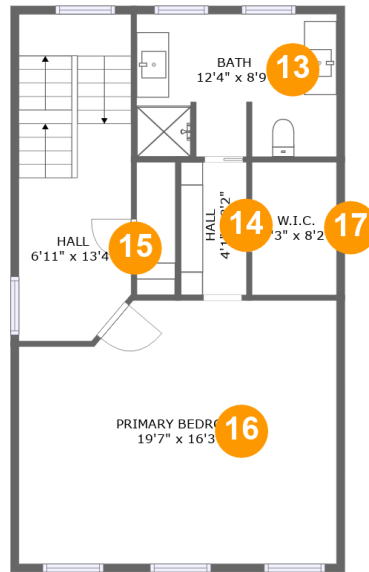
Floor 2

Total sqft: 896

Living area: 719

#	Room name	Dimensions	Area (sqft)	Counted as Living Area
6	Entry	4'8" x 5'2"	24 sq. ft	No
7	Foyer	5'6" x 6'0"	33 sq. ft	Yes
8	Wc	6'2" x 2'11"	18 sq. ft	No
9	Covered Deck	13'1" x 8'4"	124 sq. ft	No
10	Living Room	13'9" x 16'10"	218 sq. ft	Yes
11	Hall	6'3" x 27'10"	166 sq. ft	Yes
12	Kitchen	13'0" x 16'9"	217 sq. ft	Yes

2204 East Broad Street, Church Hill, Richmond, Richmond, Virginia, United States, 23223



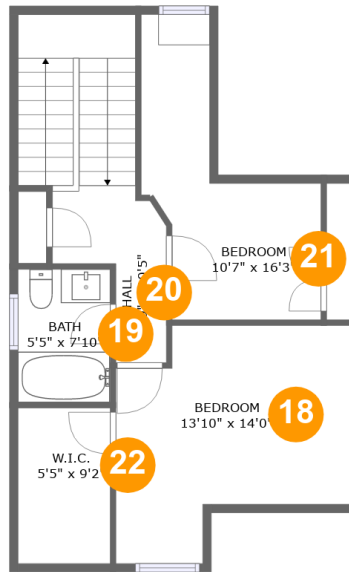
Room Dimensions

Floor 3

Total sqft: 709

Living area: 709

#	Room name	Dimensions	Area (sqft)	Counted as Living Area
13	Bath	12'4" x 8'9"	106 sq. ft	Yes
14	Hall	4'1" x 8'2"	33 sq. ft	Yes
15	Hall	6'11" x 13'4"	136 sq. ft	Yes
16	Primary Bedroom	19'7" x 16'3"	301 sq. ft	Yes
17	W.i.c.	5'3" x 8'2"	43 sq. ft	Yes

**2204 East Broad Street, Church Hill, Richmond,
Richmond, Virginia, United States, 23223****Room Dimensions****Floor 4****Total sqft: 574****Living area: 510**

#	Room name	Dimensions	Area (sqft)	Counted as Living Area
18	Bedroom	13'10" x 14'0"	133 sq. ft	Yes
19	Bath	5'5" x 7'10"	43 sq. ft	Yes
20	Hall	6'9" x 10'5"	116 sq. ft	Yes
21	Bedroom	10'7" x 16'3"	103 sq. ft	Yes
22	W.i.c.	5'5" x 9'2"	21 sq. ft	No

2204 East Broad Street, Church Hill, Richmond, Richmond, Virginia, United States, 23223

1 Floor 1 - Patio



Dimensions: 16'4" x 26'10"
Area: 419 sq. ft
Counted as Living Area: No

Heated: No
Finished: Yes
Enclosed: No
Contiguous: Yes
Permitted: Yes
Wet Space: No
Addition: No
Conversion: No

2 Floor 1 - Covered Patio



Dimensions: 19'9" x 8'4"
Area: 182 sq. ft
Counted as Living Area: No

Heated: No
Finished: Yes
Enclosed: No
Contiguous: Yes
Permitted: Yes
Wet Space: No
Addition: No
Conversion: No

2204 East Broad Street, Church Hill, Richmond, Richmond, Virginia, United States, 23223

3 Floor 1 - Family Room



Dimensions: 19'7" x 33'10"
Area: 542 sq. ft
Counted as Living Area:
Yes

Heated: Yes
Finished: Yes
Enclosed: Yes
Contiguous:
Yes
Permitted: Yes
Wet Space: No
Addition: No
Conversion: No

4 Floor 1 - Utility



Dimensions: 8'1" x 5'8"
Area: 46 sq. ft
Counted as Living Area:
Yes

Heated: Yes
Finished: Yes
Enclosed: Yes
Contiguous:
Yes
Permitted: Yes
Wet Space: No
Addition: No
Conversion: No

5 Floor 1 - Bath



Dimensions: 8'1" x 6'0"
Area: 48 sq. ft
Counted as Living Area:
Yes

Heated: Yes
Finished: Yes
Enclosed: Yes
Contiguous:
Yes
Permitted: Yes
Wet Space: Yes
Addition: No
Conversion: No

2204 East Broad Street, Church Hill, Richmond, Richmond, Virginia, United States, 23223

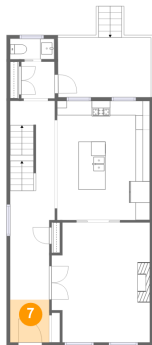
6 Floor 2 - Entry



Dimensions: 4'8" x 5'2"
Area: 24 sq. ft
Counted as Living Area: No

Heated: Yes
Finished: Yes
Enclosed: Yes
Contiguous: Yes
Permitted: Yes
Wet Space: No
Addition: No
Conversion: No

7 Floor 2 - Foyer



Dimensions: 5'6" x 6'0"
Area: 33 sq. ft
Counted as Living Area:
Yes

Heated: Yes
Finished: Yes
Enclosed: Yes
Contiguous:
Yes
Permitted: Yes
Wet Space: No
Addition: No
Conversion: No

8 Floor 2 - Wc



Dimensions: 6'2" x 2'11"
Area: 18 sq. ft
Counted as Living Area: No

Heated: Yes
Finished: Yes
Enclosed: Yes
Contiguous: Yes
Permitted: Yes
Wet Space: Yes
Addition: No
Conversion: No

2204 East Broad Street, Church Hill, Richmond, Richmond, Virginia, United States, 23223

9 Floor 2 - Covered Deck



Dimensions: 13'1" x 8'4"
Area: 124 sq. ft
Counted as Living Area: No

Heated: No
Finished: Yes
Enclosed: No
Contiguous: Yes
Permitted: Yes
Wet Space: No
Addition: No
Conversion: No

10 Floor 2 - Living Room



Dimensions: 13'9" x 16'10"
Area: 218 sq. ft
Counted as Living Area:
Yes

Heated: Yes
Finished: Yes
Enclosed: Yes
Contiguous:
Yes
Permitted: Yes
Wet Space: No
Addition: No
Conversion: No

11 Floor 2 - Hall



Dimensions: 6'3" x 27'10"
Area: 166 sq. ft
Counted as Living Area:
Yes

Heated: Yes
Finished: Yes
Enclosed: Yes
Contiguous:
Yes
Permitted: Yes
Wet Space: No
Addition: No
Conversion: No

2204 East Broad Street, Church Hill, Richmond, Richmond, Virginia, United States, 23223

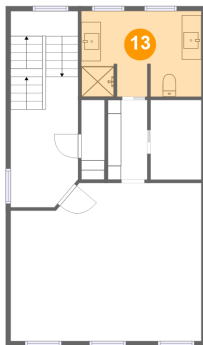
12 Floor 2 - Kitchen



Dimensions: 13'0" x 16'9"
Area: 217 sq. ft
Counted as Living Area:
Yes

Heated: Yes
Finished: Yes
Enclosed: Yes
Contiguous:
Yes
Permitted: Yes
Wet Space: No
Addition: No
Conversion: No

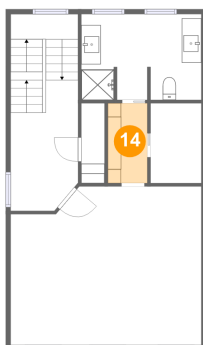
13 Floor 3 - Bath



Dimensions: 12'4" x 8'9"
Area: 106 sq. ft
Counted as Living Area:
Yes

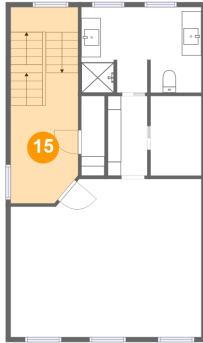
Heated: Yes
Finished: Yes
Enclosed: Yes
Contiguous:
Yes
Permitted: Yes
Wet Space: Yes
Addition: No
Conversion: No

14 Floor 3 - Hall



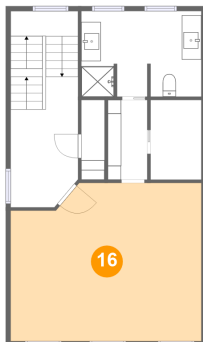
Dimensions: 4'1" x 8'2"
Area: 33 sq. ft
Counted as Living Area:
Yes

Heated: Yes
Finished: Yes
Enclosed: Yes
Contiguous:
Yes
Permitted: Yes
Wet Space: No
Addition: No
Conversion: No

**2204 East Broad Street, Church Hill, Richmond,
Richmond, Virginia, United States, 23223****15 Floor 3 - Hall**

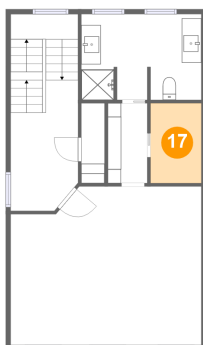
Dimensions: 6'11" x 13'4"
Area: 136 sq. ft
Counted as Living Area:
Yes

Heated: Yes
Finished: Yes
Enclosed: Yes
Contiguous:
Yes
Permitted: Yes
Wet Space: No
Addition: No
Conversion: No

16 Floor 3 - Primary Bedroom

Dimensions: 19'7" x 16'3"
Area: 301 sq. ft
Counted as Living Area:
Yes

Heated: Yes
Finished: Yes
Enclosed: Yes
Contiguous:
Yes
Permitted: Yes
Wet Space: No
Addition: No
Conversion: No

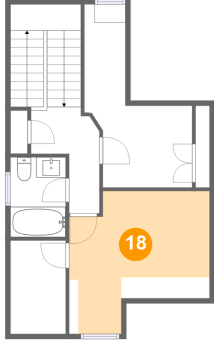
17 Floor 3 - W.i.c.

Dimensions: 5'3" x 8'2"
Area: 43 sq. ft
Counted as Living Area:
Yes

Heated: Yes
Finished: Yes
Enclosed: Yes
Contiguous:
Yes
Permitted: Yes
Wet Space: No
Addition: No
Conversion: No

**2204 East Broad Street, Church Hill, Richmond,
Richmond, Virginia, United States, 23223**

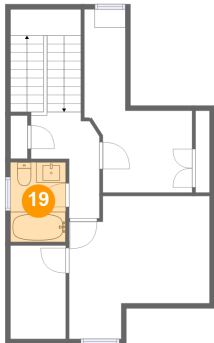
18 Floor 4 - Bedroom



Dimensions: 13'10" x 14'0"
Area: 133 sq. ft
Counted as Living Area:
Yes

Heated: Yes
Finished: Yes
Enclosed: Yes
Contiguous:
Yes
Permitted: Yes
Wet Space: No
Addition: No
Conversion: No

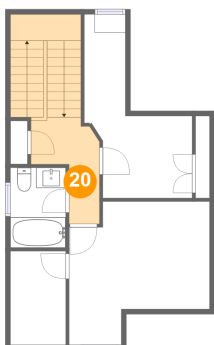
19 Floor 4 - Bath



Dimensions: 5'5" x 7'10"
Area: 43 sq. ft
Counted as Living Area:
Yes

Heated: Yes
Finished: Yes
Enclosed: Yes
Contiguous:
Yes
Permitted: Yes
Wet Space: Yes
Addition: No
Conversion: No

20 Floor 4 - Hall

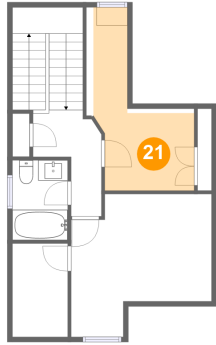


Dimensions: 6'9" x 10'5"
Area: 116 sq. ft
Counted as Living Area:
Yes

Heated: Yes
Finished: Yes
Enclosed: Yes
Contiguous:
Yes
Permitted: Yes
Wet Space: No
Addition: No
Conversion: No

**2204 East Broad Street, Church Hill, Richmond,
Richmond, Virginia, United States, 23223**

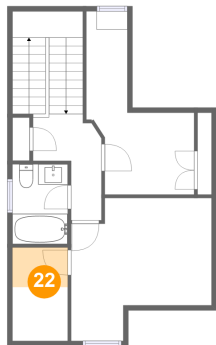
21 Floor 4 - Bedroom



Dimensions: 10'7" x 16'3"
Area: 103 sq. ft
Counted as Living Area:
Yes

Heated: Yes
Finished: Yes
Enclosed: Yes
Contiguous:
Yes
Permitted: Yes
Wet Space: No
Addition: No
Conversion: No

22 Floor 4 - W.i.c.



Dimensions: 5'5" x 9'2"
Area: 21 sq. ft
Counted as Living Area: No

Heated: Yes
Finished: Yes
Enclosed: Yes
Contiguous: Yes
Permitted: Yes
Wet Space: No
Addition: No
Conversion: No