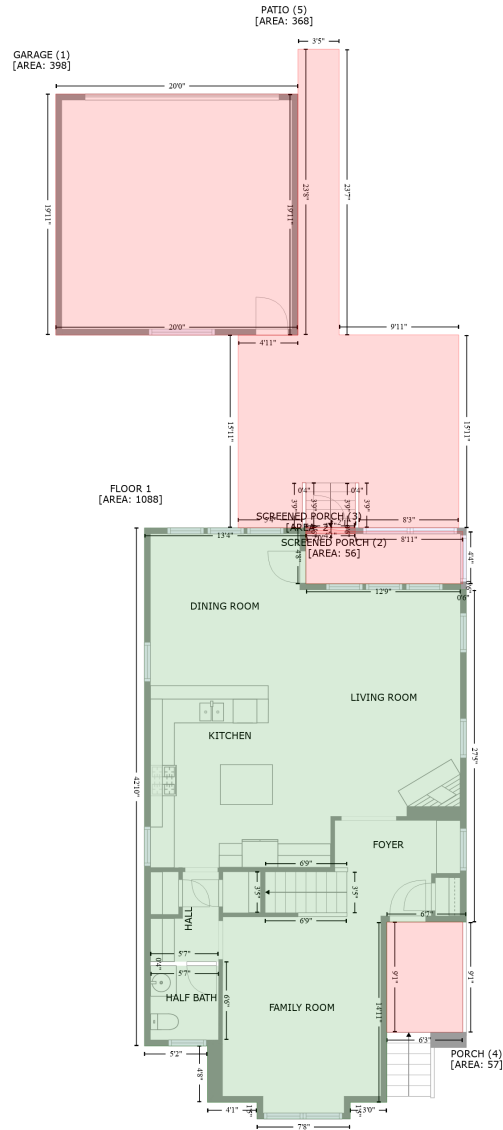


844 Wildflower Ridge Road, Wake Forest, Wake County, North Carolina, United States, 27587

Gross Living Area: 2180 sq. ft



Space	Area (sq. ft)	Calculation
FLOOR 1 (Living area)	1088	Coordinate Polygon Area Algorithm using inches $-((248.5 + 248.5) * (550.7 - 606.2) + (248.5 + 401.6) * (606.2 - 606.2) + (401.6 + 401.6) * (606.2 - 612.2) + (401.6 + 407.6) * (612.2 - 612.2) + (407.6 + 407.6) * (612.2 - 941.7) + (407.6 + 328.8) * (941.7 - 941.7) + (328.8 + 328.8) * (941.7 - 1120.6) + (328.8 + 292.5) * (1120.6 - 1120.6) + (292.5 + 292.5) * (1120.6 - 1137.2) + (292.5 + 200) * (1137.2 - 1137.2) + (200 + 200) * (1137.2 - 1120.6) + (200 + 151) * (1120.6 - 1120.6) + (151 + 151) * (1120.6 - 1064.7) + (151 + 88.5) * (1064.7 - 1064.7) + (88.5 + 88.5) * (1064.7 - 550.7) + (88.5 + 248.5) * (550.7 - 550.7)) * 0.5 + 0.00694 + -((161.9 + 161.9) * (1058.7 - 981) + (161.9 + 94.5) * (981 - 981) + (94.5 + 94.5) * (981 -$

844 Wildflower Ridge Road, Wake Forest, Wake County, North Carolina, United States, 27587

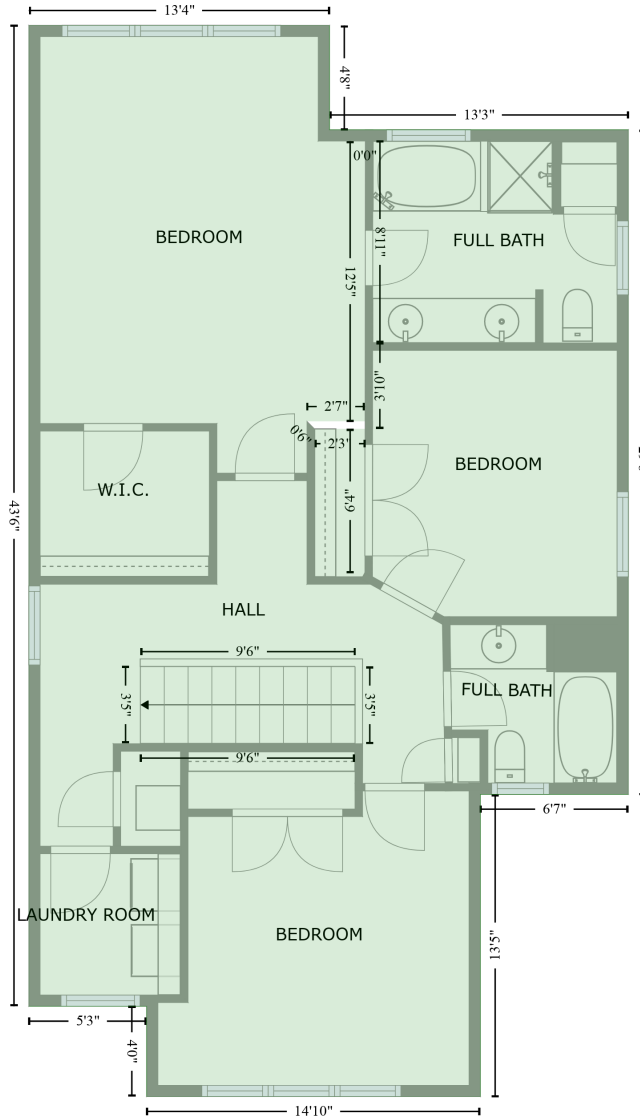
Gross Living Area: 2180 sq. ft

Space	Area (sq. ft)	Calculation <small>Coordinate Polygon Area Algorithm using inches</small>
		$985 + (94.5 + 161.9) * (985 - 985) + (161.9 + 161.9) * (985 - 1058.7) + (161.9 + 161.9) * (1058.7 - 1058.7) * 0.5 * 0.00694$
GARAGE (Non-living area)	398	$-((240.6 + 240.6) * (120.4 - 359.5) + (240.6 + 0.7) * (359.5 - 359.5) + (0.7 + 0.7) * (359.5 - 120.4) + (0.7 + 240.6) * (120.4 - 120.4)) * 0.5 * 0.00694$
SCREENED PORCH (Non-living area)	56	$-((272.8 + 297.4) * (552.4 - 554.3) + (297.4 + 404) * (554.3 - 554.3) + (404 + 404) * (554.3 - 606.2) + (404 + 248.5) * (606.2 - 606.2) + (248.5 + 248.5) * (606.2 - 554.3) + (248.5 + 272.8) * (554.3 - 552.4)) * 0.5 * 0.00694$
SCREENED PORCH (Non-living area)	2	$-((297.3 + 297.3) * (550.7 - 556.7) + (297.3 + 248.5) * (556.7 - 556.7) + (248.5 + 248.5) * (556.7 - 550.7) + (248.5 + 297.3) * (550.7 - 550.7)) * 0.5 * 0.00694$
PORCH (Non-living area)	57	$-((404 + 404) * (941.7 - 1051) + (404 + 328.8) * (1051 - 1051) + (328.8 + 328.8) * (1051 - 941.7) + (328.8 + 404) * (941.7 - 941.7)) * 0.5 * 0.00694$
PATIO (Non-living area)	368	$-((281.4 + 281.4) * (75.9 - 359.4) + (281.4 + 400) * (359.4 - 359.4) + (400 + 400) * (359.4 - 550.7) + (400 + 301) * (550.7 - 550.7) + (301 + 301) * (550.7 - 506.2) + (301 + 297.4) * (506.2 - 506.2) + (297.4 + 297.4) * (506.2 - 550.7) + (297.4 + 248.5) * (550.7 - 550.7) + (248.5 + 248.5) * (550.7 - 506) + (248.5 + 244.9) * (506 - 506) + (244.9 + 244.9) * (506 - 550.7) + (244.9 + 181.4) * (550.7 - 550.7) + (181.4 + 181.4) * (550.7 - 359.5) + (181.4 + 240.6) * (359.5 - 359.5) + (240.6 + 240.6) * (359.5 - 75.9) + (240.6 + 281.4) * (75.9 - 75.9)) * 0.5 * 0.00694$

844 Wildflower Ridge Road, Wake Forest, Wake County, North Carolina, United States, 27587

Gross Living Area: 2180 sq. ft

FLOOR 2
[AREA: 1092]



Space	Area (sq. ft)	Calculation <small>Coordinate Polygon Area Algorithm using inches</small>
FLOOR 2 (Living area)	1092	$ \begin{aligned} & -((248.5 + 248.5) * (550.7 - 606.3) + (248.5 + 407.6) * (606.3 - 606.3) + (407.6 + 407.6) * (606.3 - 959.8) + (407.6 + 328.8) * (959.8 - 959.8) + (328.8 + 328.8) * (959.8 - 1120.6) + (328.8 + 151.2) * \\ & (1120.6 - 1120.6) + (151.2 + 151.2) * (1120.6 - 1072.5) + (151.2 + 88.5) * (1072.5 - 1072.5) + \\ & (88.5 + 88.5) * (1072.5 - 550.7) + (88.5 + 248.5) * (550.7 - 550.7)) * 0.5 * 0.00694 + -((267.5 + 267.4) * (612.3 - 612.3) + (267.4 + 267.4) * (612.3 - 761.4) + (267.4 + 236.6) * (761.4 - 761.4) + \\ & (236.6 + 240.6) * (761.4 - 765.4) + (240.6 + 267.4) * (765.4 - 765.4) + (267.4 + 267.4) * (765.4 - 841.8) + (267.4 + 267.4) * (841.8 - 841.8) + (267.4 + 267.4) * (841.8 - 765.4) + (267.4 + 267.5) * \end{aligned} $

844 Wildflower Ridge Road, Wake Forest, Wake County, North Carolina, United States, 27587

Gross Living Area: 2180 sq. ft

Space	Area (sq. ft)	Calculation <small>Coordinate Polygon Area Algorithm using inches</small>
		$(765.4 - 719.6) + (267.5 + 267.5) * (719.6 - 612.3) * 0.5 * 0.00694$