



Home report


14199 82nd Avenue, Bayhaven, Seminole, Pinellas County,  
Florida, United States, 33776





Property summary


 **1** Garages


 **2** Bedrooms

 **2** Bathrooms

 **0** Half baths

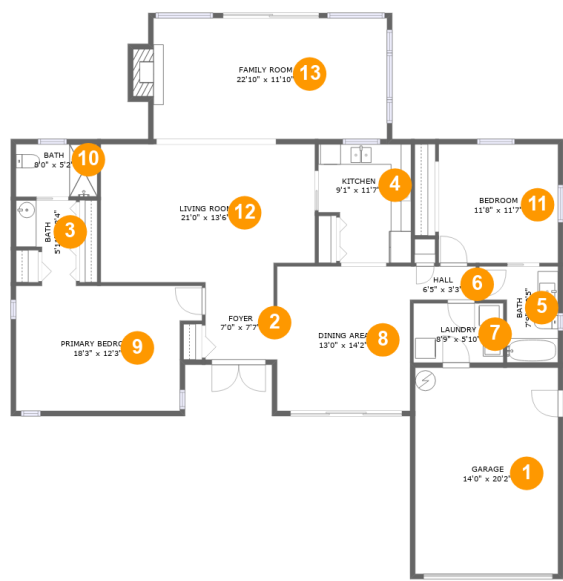
 **1** Floors

 **1,647** Gross living area sqft

 **1,965** Total sqft

Home report

14199 82nd Avenue, Bayhaven, Seminole, Pinellas County,  
Florida, United States, 33776



Room dimensions

Floor 1 Total sqft: 1965    Living area: 1647

#		Dimensions	sqft	Counted as living area
1	Garage	14'0" x 20'2"	282 sq. ft	No
2	Foyer	7'0" x 7'7"	52 sq. ft	Yes
3	Bath	5'11" x 8'4"	40 sq. ft	Yes
4	Kitchen	9'1" x 11'7"	95 sq. ft	Yes
5	Bath	7'9" x 9'5"	56 sq. ft	Yes
6	Hall	6'5" x 3'3"	21 sq. ft	Yes
7	Laundry	8'9" x 5'10"	51 sq. ft	Yes
8	Dining Area	13'0" x 14'2"	184 sq. ft	Yes
9	Primary Bedroom	18'3" x 12'3"	204 sq. ft	Yes
10	Bath	8'0" x 5'2"	41 sq. ft	Yes
11	Bedroom	11'8" x 11'7"	136 sq. ft	Yes

Home report

14199 82nd Avenue, Bayhaven, Seminole, Pinellas County,  
Florida, United States, 33776

#		Dimensions	sqft	Counted as living area
12	Living Room	21'0" x 13'6"	276 sq. ft	Yes
13	Family Room	22'10" x 11'10"	280 sq. ft	Yes

14199 82nd Avenue, Bayhaven, Seminole, Pinellas County,  
Florida, United States, 33776

1 Floor 1 - Garage



Dimensions: 14'0" x 20'2"  
Area: 282 sq. ft  
Counted as living area: No

Heated: No  
Finished: No  
Enclosed: Yes  
Contiguous: Yes  
Permitted: Yes  
Wet space: No  
Addition: No  
Conversion: No

2 Floor 1 - Foyer



Dimensions: 7'0" x 7'7"  
Area: 52 sq. ft  
Counted as living area: Yes

Heated: Yes  
Finished: Yes  
Enclosed: Yes  
Contiguous: Yes  
Permitted: Yes  
Wet space: No  
Addition: No  
Conversion: No

## Home report

14199 82nd Avenue, Bayhaven, Seminole, Pinellas County,  
Florida, United States, 33776

### 3 Floor 1 - Bath



Dimensions: 5'11" x 8'4"  
Area: 40 sq. ft  
Counted as living area: Yes

Heated: Yes  
Finished: Yes  
Enclosed: Yes  
Contiguous: Yes  
Permitted: Yes  
Wet space: Yes  
Addition: No  
Conversion: No

### 4 Floor 1 - Kitchen



Dimensions: 9'1" x 11'7"  
Area: 95 sq. ft  
Counted as living area: Yes

Heated: Yes  
Finished: Yes  
Enclosed: Yes  
Contiguous: Yes  
Permitted: Yes  
Wet space: No  
Addition: No  
Conversion: No

### 5 Floor 1 - Bath



Dimensions: 7'9" x 9'5"  
Area: 56 sq. ft  
Counted as living area: Yes

Heated: Yes  
Finished: Yes  
Enclosed: Yes  
Contiguous: Yes  
Permitted: Yes  
Wet space: Yes  
Addition: No  
Conversion: No

## Home report

14199 82nd Avenue, Bayhaven, Seminole, Pinellas County,  
Florida, United States, 33776

### 6 Floor 1 - Hall



Dimensions: 6'5" x 3'3"  
Area: 21 sq. ft  
Counted as living area: Yes

Heated: Yes  
Finished: Yes  
Enclosed: Yes  
Contiguous: Yes  
Permitted: Yes  
Wet space: No  
Addition: No  
Conversion: No

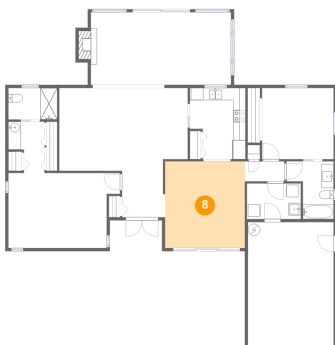
### 7 Floor 1 - Laundry



Dimensions: 8'9" x 5'10"  
Area: 51 sq. ft  
Counted as living area: Yes

Heated: Yes  
Finished: Yes  
Enclosed: Yes  
Contiguous: Yes  
Permitted: Yes  
Wet space: No  
Addition: No  
Conversion: No

### 8 Floor 1 - Dining Area



Dimensions: 13'0" x 14'2"  
Area: 184 sq. ft  
Counted as living area: Yes

Heated: Yes  
Finished: Yes  
Enclosed: Yes  
Contiguous: Yes  
Permitted: Yes  
Wet space: No  
Addition: No  
Conversion: No

## Home report

14199 82nd Avenue, Bayhaven, Seminole, Pinellas County,  
Florida, United States, 33776

### 9 Floor 1 - Primary Bedroom

---



Dimensions: 18'3" x 12'3"  
Area: 204 sq. ft  
Counted as living area: Yes

Heated: Yes  
Finished: Yes  
Enclosed: Yes  
Contiguous: Yes  
Permitted: Yes  
Wet space: No  
Addition: No  
Conversion: No

### 10 Floor 1 - Bath

---



Dimensions: 8'0" x 5'2"  
Area: 41 sq. ft  
Counted as living area: Yes

Heated: Yes  
Finished: Yes  
Enclosed: Yes  
Contiguous: Yes  
Permitted: Yes  
Wet space: Yes  
Addition: No  
Conversion: No

### 11 Floor 1 - Bedroom

---



Dimensions: 11'8" x 11'7"  
Area: 136 sq. ft  
Counted as living area: Yes

Heated: Yes  
Finished: Yes  
Enclosed: Yes  
Contiguous: Yes  
Permitted: Yes  
Wet space: No  
Addition: No  
Conversion: No

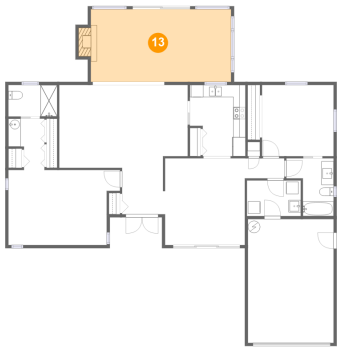
12 Floor 1 - Living Room



Dimensions: 21'0" x 13'6"  
Area: 276 sq. ft  
Counted as living area: Yes

Heated: Yes  
Finished: Yes  
Enclosed: Yes  
Contiguous: Yes  
Permitted: Yes  
Wet space: No  
Addition: No  
Conversion: No

13 Floor 1 - Family Room



Dimensions: 22'10" x 11'10"  
Area: 280 sq. ft  
Counted as living area: Yes

Heated: Yes  
Finished: Yes  
Enclosed: Yes  
Contiguous: Yes  
Permitted: Yes  
Wet space: No  
Addition: No  
Conversion: No