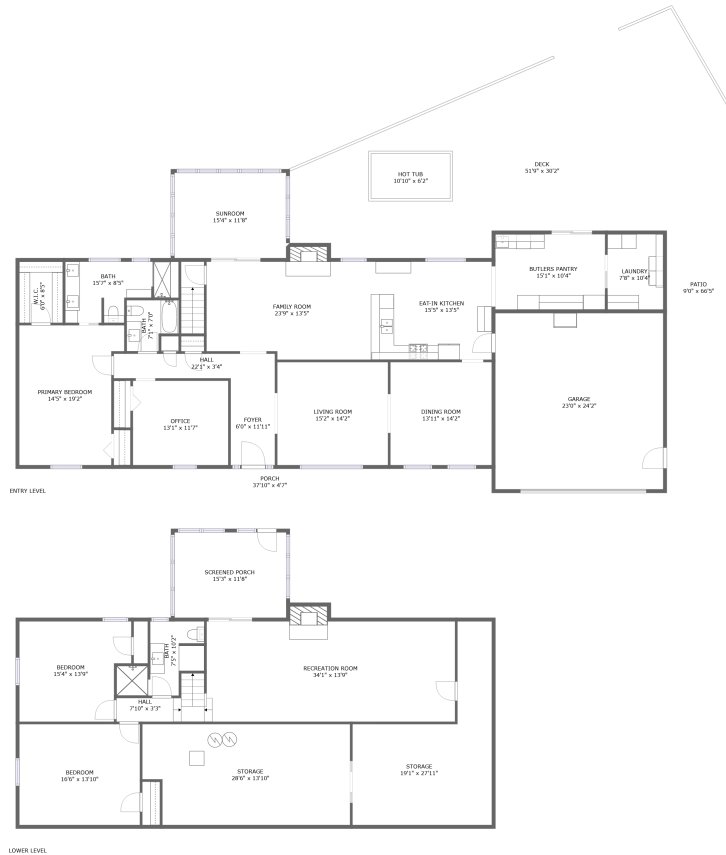


5123 Flintlock Lane, Cave Spring, Roanoke, Roanoke County, Virginia, United States, 24018



Property Summary

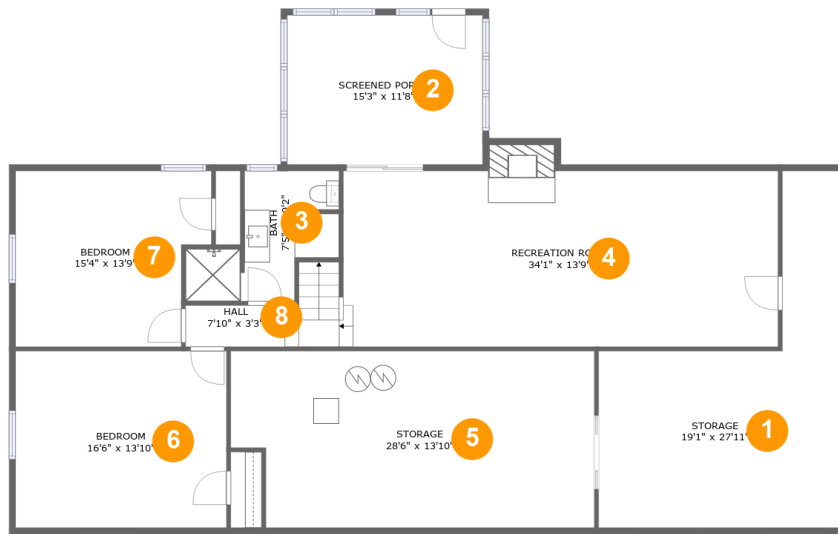
 **1** garages  **3** bedrooms  **3** bathrooms  **0** half baths

 **2** floors

 **3,536** Gross Living Area sqft

 **6,809** total sqft

5123 Flintlock Lane, Cave Spring, Roanoke, Roanoke County, Virginia, United States, 24018



Room Dimensions

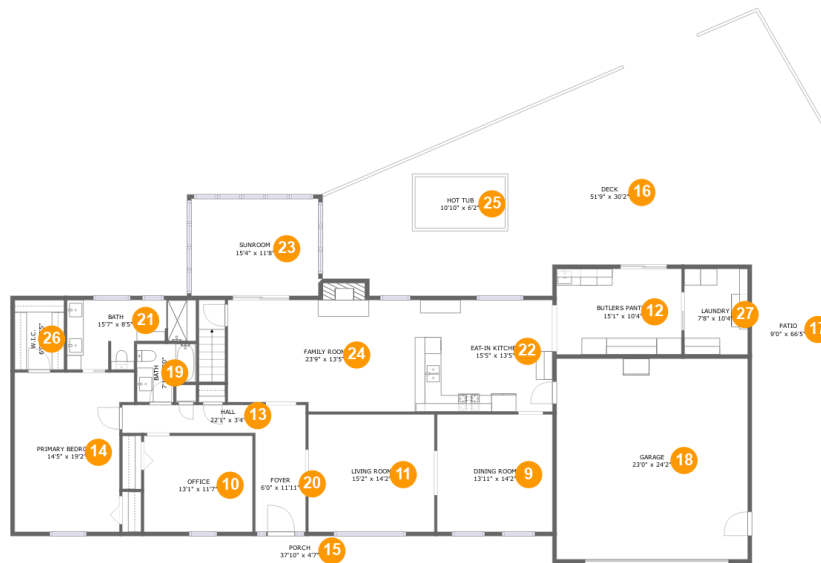
Floor 1

Total sqft: 2115

Living area: 1153

#	Room name	Dimensions	Area (sqft)	Counted as Living Area
1	Storage	19'1" x 27'11"	331 sq. ft	No
2	Screened Porch	15'3" x 11'8"	179 sq. ft	No
3	Bath	7'5" x 10'2"	81 sq. ft	Yes
4	Recreation Room	34'1" x 13'9"	480 sq. ft	Yes
5	Storage	28'6" x 13'10"	377 sq. ft	No
6	Bedroom	16'6" x 13'10"	229 sq. ft	Yes
7	Bedroom	15'4" x 13'9"	193 sq. ft	Yes
8	Hall	7'10" x 3'3"	51 sq. ft	Yes

5123 Flintlock Lane, Cave Spring, Roanoke, Roanoke County, Virginia, United States, 24018



Room Dimensions

Floor 2

Total sqft: 4694

Living area: 2383

#	Room name	Dimensions	Area (sqft)	Counted as Living Area
9	Dining Room	13'11" x 14'2"	197 sq. ft	Yes
10	Office	13'1" x 11'7"	152 sq. ft	Yes
11	Living Room	15'2" x 14'2"	215 sq. ft	Yes
12	Butlers Pantry	15'1" x 10'4"	155 sq. ft	Yes
13	Hall	22'1" x 3'4"	75 sq. ft	Yes
14	Primary Bedroom	14'5" x 19'2"	249 sq. ft	Yes
15	Porch	37'10" x 4'7"	173 sq. ft	No
16	Deck	51'9" x 30'2"	1086 sq. ft	No
17	Patio	9'0" x 66'5"	537 sq. ft	No
18	Garage	23'0" x 24'2"	557 sq. ft	No
19	Bath	7'1" x 7'0"	43 sq. ft	Yes

Scan captured on Tue, 08 Oct 2024 14:48:46 GMT

Information is calculated by CubiCasa technology; deemed highly reliable but not guaranteed.

**5123 Flintlock Lane, Cave Spring, Roanoke,
Roanoke County, Virginia, United States, 24018**

#	Room name	Dimensions	Area (sqft)	Counted as Living Area
20	Foyer	6'0" x 11'11"	72 sq. ft	Yes
21	Bath	15'7" x 8'5"	103 sq. ft	Yes
22	Eat-in Kitchen	15'5" x 13'5"	207 sq. ft	Yes
23	Sunroom	15'4" x 11'8"	179 sq. ft	Yes
24	Family Room	23'9" x 13'5"	318 sq. ft	Yes
25	Hot Tub	10'10" x 6'2"	67 sq. ft	No
26	W.i.c.	6'0" x 8'5"	50 sq. ft	Yes
27	Laundry	7'8" x 10'4"	79 sq. ft	Yes

5123 Flintlock Lane, Cave Spring, Roanoke, Roanoke County, Virginia, United States, 24018

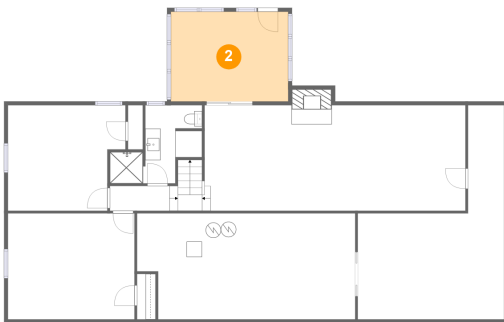
1 Floor 1 - Storage



Dimensions: 19'1" x 27'11"
Area: 331 sq. ft
Counted as Living Area: No

Heated: No
Finished: No
Enclosed: No
Contiguous: Yes
Permitted: Yes
Wet Space: No
Addition: No
Conversion: No

2 Floor 1 - Screened Porch

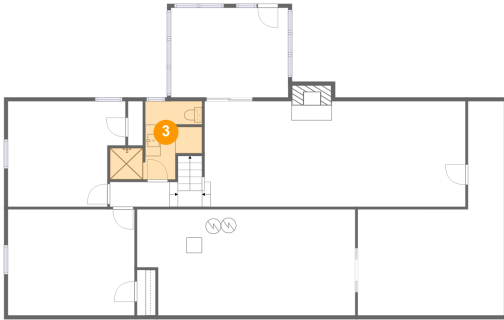


Dimensions: 15'3" x 11'8"
Area: 179 sq. ft
Counted as Living Area: No

Heated: No
Finished: Yes
Enclosed: No
Contiguous: Yes
Permitted: Yes
Wet Space: No
Addition: No
Conversion: No

5123 Flintlock Lane, Cave Spring, Roanoke, Roanoke County, Virginia, United States, 24018

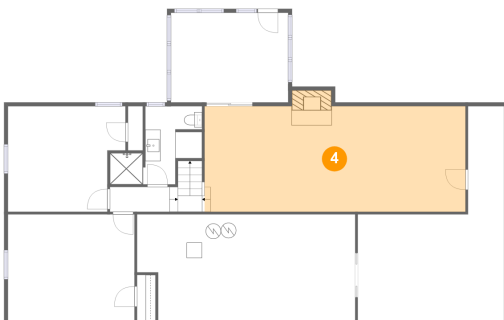
3 Floor 1 - Bath



Dimensions: 7'5" x 10'2"
Area: 81 sq. ft
Counted as Living Area:
Yes

Heated: Yes
Finished: Yes
Enclosed: Yes
Contiguous:
Yes
Permitted: Yes
Wet Space: Yes
Addition: No
Conversion: No

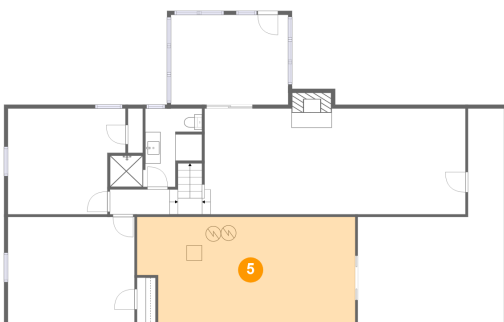
4 Floor 1 - Recreation Room



Dimensions: 34'1" x 13'9"
Area: 480 sq. ft
Counted as Living Area:
Yes

Heated: Yes
Finished: Yes
Enclosed: Yes
Contiguous:
Yes
Permitted: Yes
Wet Space: No
Addition: No
Conversion: No

5 Floor 1 - Storage



Dimensions: 28'6" x 13'10"
Area: 377 sq. ft
Counted as Living Area: No

Heated: No
Finished: No
Enclosed: No
Contiguous: Yes
Permitted: Yes
Wet Space: No
Addition: No
Conversion: No

5123 Flintlock Lane, Cave Spring, Roanoke, Roanoke County, Virginia, United States, 24018

6 Floor 1 - Bedroom



Dimensions: 16'6" x 13'10"
Area: 229 sq. ft
Counted as Living Area:
Yes

Heated: Yes
Finished: Yes
Enclosed: Yes
Contiguous:
Yes
Permitted: Yes
Wet Space: No
Addition: No
Conversion: No

7 Floor 1 - Bedroom



Dimensions: 15'4" x 13'9"
Area: 193 sq. ft
Counted as Living Area:
Yes

Heated: Yes
Finished: Yes
Enclosed: Yes
Contiguous:
Yes
Permitted: Yes
Wet Space: No
Addition: No
Conversion: No

8 Floor 1 - Hall

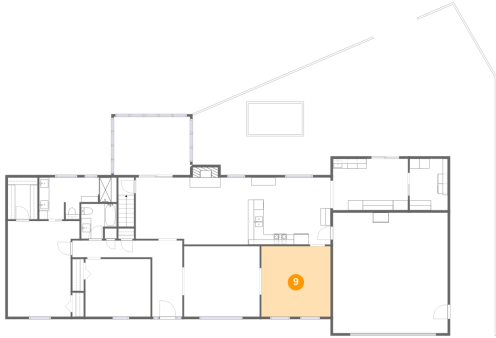


Dimensions: 7'10" x 3'3"
Area: 51 sq. ft
Counted as Living Area:
Yes

Heated: Yes
Finished: Yes
Enclosed: Yes
Contiguous:
Yes
Permitted: Yes
Wet Space: No
Addition: No
Conversion: No

5123 Flintlock Lane, Cave Spring, Roanoke, Roanoke County, Virginia, United States, 24018

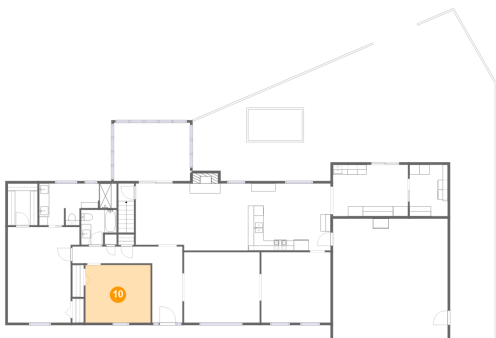
9 Floor 2 - Dining Room



Dimensions: 13'11" x 14'2"
Area: 197 sq. ft
Counted as Living Area:
Yes

Heated: Yes
Finished: Yes
Enclosed: Yes
Contiguous:
Yes
Permitted: Yes
Wet Space: No
Addition: No
Conversion: No

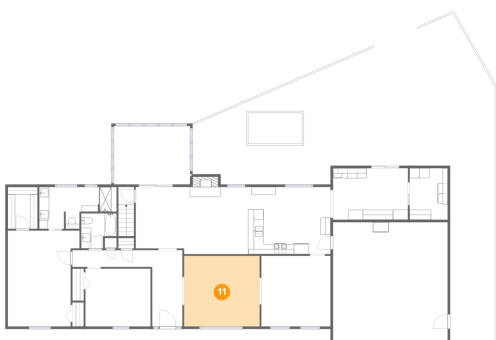
10 Floor 2 - Office



Dimensions: 13'1" x 11'7"
Area: 152 sq. ft
Counted as Living Area:
Yes

Heated: Yes
Finished: Yes
Enclosed: Yes
Contiguous:
Yes
Permitted: Yes
Wet Space: No
Addition: No
Conversion: No

11 Floor 2 - Living Room

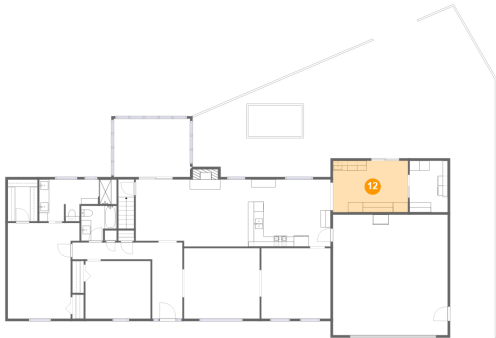


Dimensions: 15'2" x 14'2"
Area: 215 sq. ft
Counted as Living Area:
Yes

Heated: Yes
Finished: Yes
Enclosed: Yes
Contiguous:
Yes
Permitted: Yes
Wet Space: No
Addition: No
Conversion: No

5123 Flintlock Lane, Cave Spring, Roanoke, Roanoke County, Virginia, United States, 24018

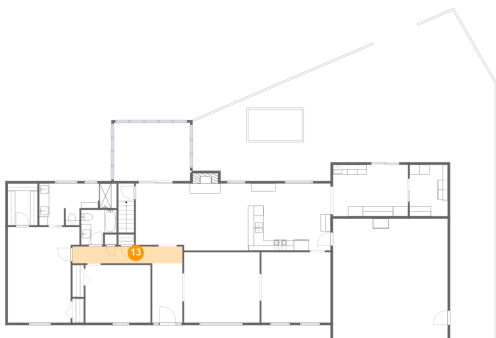
12 Floor 2 - Butlers Pantry



Dimensions: 15'1" x 10'4"
Area: 155 sq. ft
Counted as Living Area:
Yes

Heated: Yes
Finished: Yes
Enclosed: Yes
Contiguous:
Yes
Permitted: Yes
Wet Space: No
Addition: No
Conversion: No

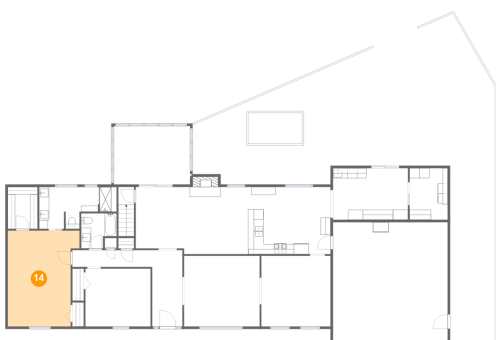
13 Floor 2 - Hall



Dimensions: 22'1" x 3'4"
Area: 75 sq. ft
Counted as Living Area:
Yes

Heated: Yes
Finished: Yes
Enclosed: Yes
Contiguous:
Yes
Permitted: Yes
Wet Space: No
Addition: No
Conversion: No

14 Floor 2 - Primary Bedroom

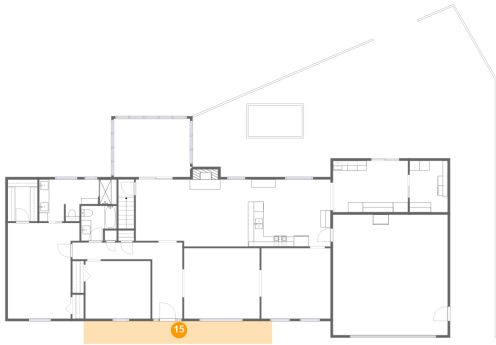


Dimensions: 14'5" x 19'2"
Area: 249 sq. ft
Counted as Living Area:
Yes

Heated: Yes
Finished: Yes
Enclosed: Yes
Contiguous:
Yes
Permitted: Yes
Wet Space: No
Addition: No
Conversion: No

5123 Flintlock Lane, Cave Spring, Roanoke, Roanoke County, Virginia, United States, 24018

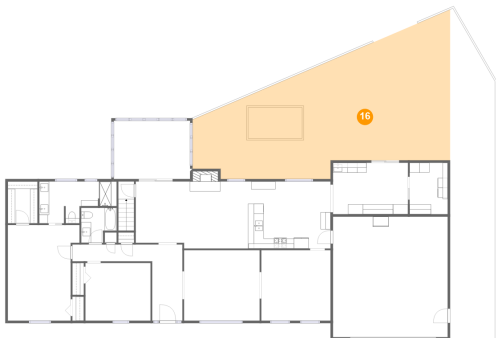
15 Floor 2 - Porch



Dimensions: 37'10" x 4'7"
Area: 173 sq. ft
Counted as Living Area: No

Heated: No
Finished: Yes
Enclosed: No
Contiguous: Yes
Permitted: Yes
Wet Space: No
Addition: No
Conversion: No

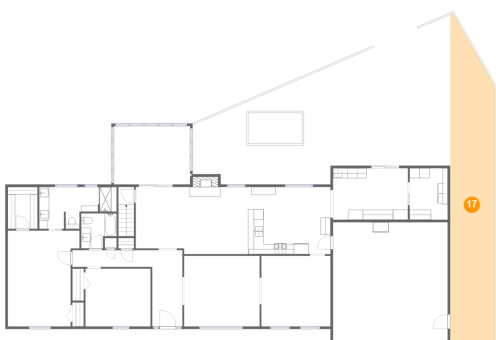
16 Floor 2 - Deck



Dimensions: 51'9" x 30'2"
Area: 1086 sq. ft
Counted as Living Area: No

Heated: No
Finished: Yes
Enclosed: No
Contiguous: Yes
Permitted: Yes
Wet Space: No
Addition: No
Conversion: No

17 Floor 2 - Patio

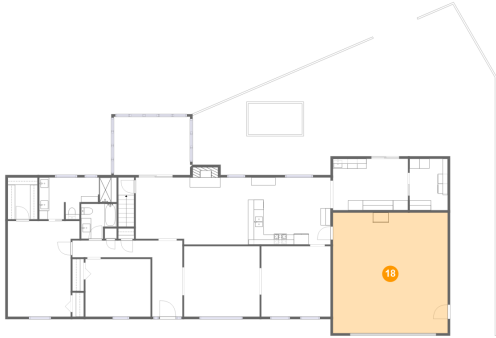


Dimensions: 9'0" x 66'5"
Area: 537 sq. ft
Counted as Living Area: No

Heated: No
Finished: Yes
Enclosed: No
Contiguous: Yes
Permitted: Yes
Wet Space: No
Addition: No
Conversion: No

5123 Flintlock Lane, Cave Spring, Roanoke, Roanoke County, Virginia, United States, 24018

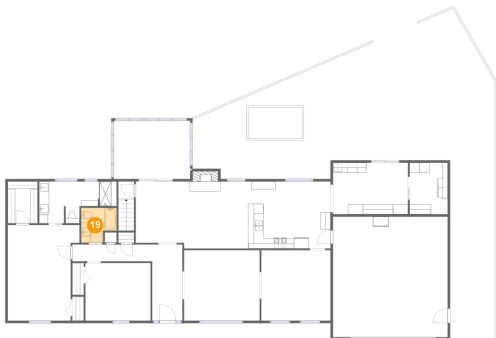
18 Floor 2 - Garage



Dimensions: 23'0" x 24'2"
Area: 557 sq. ft
Counted as Living Area: No

Heated: No
Finished: No
Enclosed: Yes
Contiguous: Yes
Permitted: Yes
Wet Space: No
Addition: No
Conversion: No

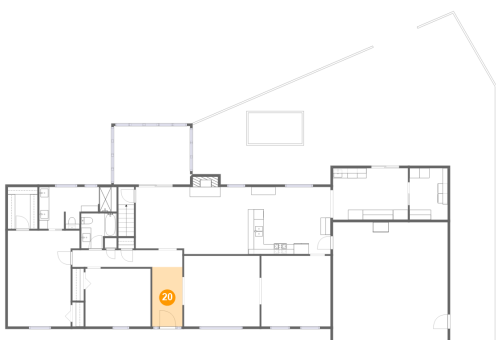
19 Floor 2 - Bath



Dimensions: 7'1" x 7'0"
Area: 43 sq. ft
Counted as Living Area:
Yes

Heated: Yes
Finished: Yes
Enclosed: Yes
Contiguous:
Yes
Permitted: Yes
Wet Space: Yes
Addition: No
Conversion: No

20 Floor 2 - Foyer

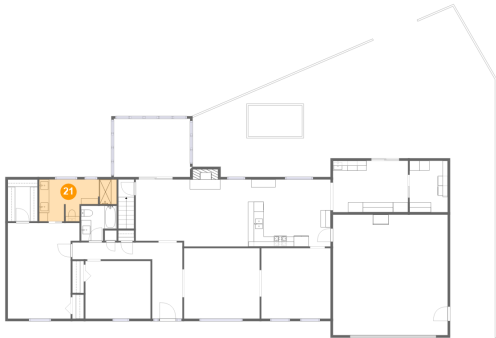


Dimensions: 6'0" x 11'11"
Area: 72 sq. ft
Counted as Living Area:
Yes

Heated: Yes
Finished: Yes
Enclosed: Yes
Contiguous:
Yes
Permitted: Yes
Wet Space: No
Addition: No
Conversion: No

5123 Flintlock Lane, Cave Spring, Roanoke, Roanoke County, Virginia, United States, 24018

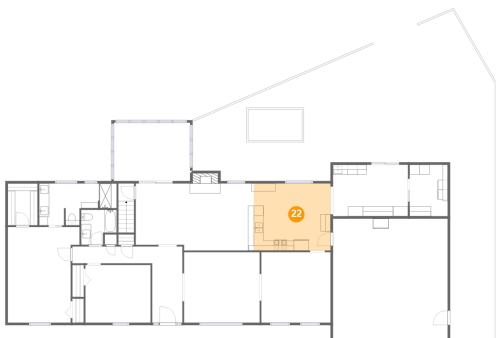
21 Floor 2 - Bath



Dimensions: 15'7" x 8'5"
Area: 103 sq. ft
Counted as Living Area:
Yes

Heated: Yes
Finished: Yes
Enclosed: Yes
Contiguous:
Yes
Permitted: Yes
Wet Space: Yes
Addition: No
Conversion: No

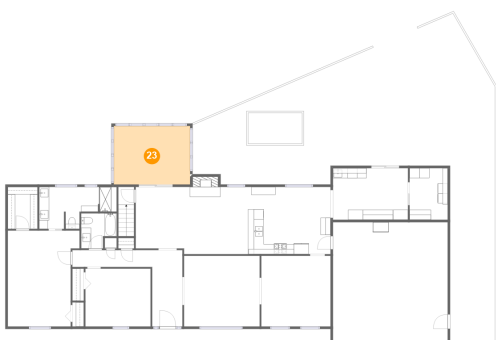
22 Floor 2 - Eat-in Kitchen



Dimensions: 15'5" x 13'5"
Area: 207 sq. ft
Counted as Living Area:
Yes

Heated: Yes
Finished: Yes
Enclosed: Yes
Contiguous:
Yes
Permitted: Yes
Wet Space: No
Addition: No
Conversion: No

23 Floor 2 - Sunroom

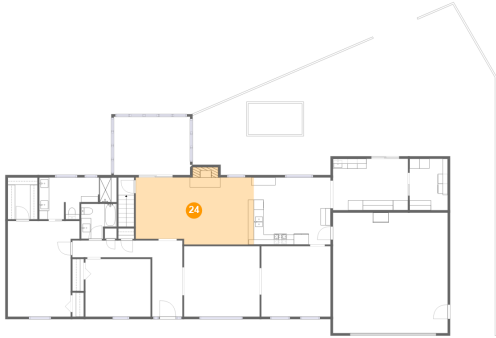


Dimensions: 15'4" x 11'8"
Area: 179 sq. ft
Counted as Living Area:
Yes

Heated: Yes
Finished: Yes
Enclosed: Yes
Contiguous:
Yes
Permitted: Yes
Wet Space: No
Addition: No
Conversion: No

5123 Flintlock Lane, Cave Spring, Roanoke, Roanoke County, Virginia, United States, 24018

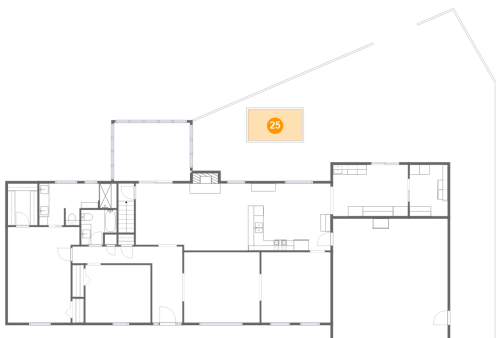
24 Floor 2 - Family Room



Dimensions: 23'9" x 13'5"
Area: 318 sq. ft
Counted as Living Area:
Yes

Heated: Yes
Finished: Yes
Enclosed: Yes
Contiguous:
Yes
Permitted: Yes
Wet Space: No
Addition: No
Conversion: No

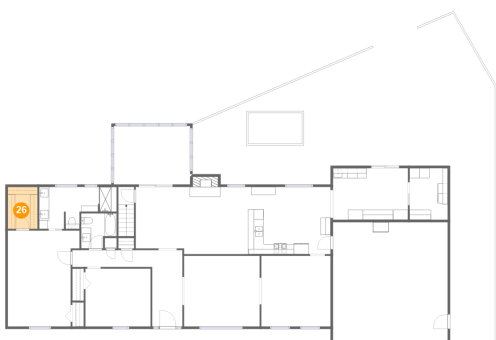
25 Floor 2 - Hot Tub



Dimensions: 10'10" x 6'2"
Area: 67 sq. ft
Counted as Living Area: No

Heated: No
Finished: No
Enclosed: No
Contiguous: No
Permitted: No
Wet Space: No
Addition: No
Conversion: No

26 Floor 2 - W.i.c.

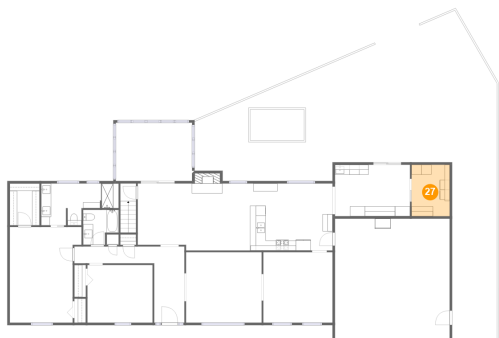


Dimensions: 6'0" x 8'5"
Area: 50 sq. ft
Counted as Living Area:
Yes

Heated: Yes
Finished: Yes
Enclosed: Yes
Contiguous:
Yes
Permitted: Yes
Wet Space: No
Addition: No
Conversion: No

**5123 Flintlock Lane, Cave Spring, Roanoke,
Roanoke County, Virginia, United States, 24018**

27 Floor 2 - Laundry



Dimensions: 7'8" x 10'4"
Area: 79 sq. ft
Counted as Living Area:
Yes

Heated: Yes
Finished: Yes
Enclosed: Yes
Contiguous:
Yes
Permitted: Yes
Wet Space: No
Addition: No
Conversion: No