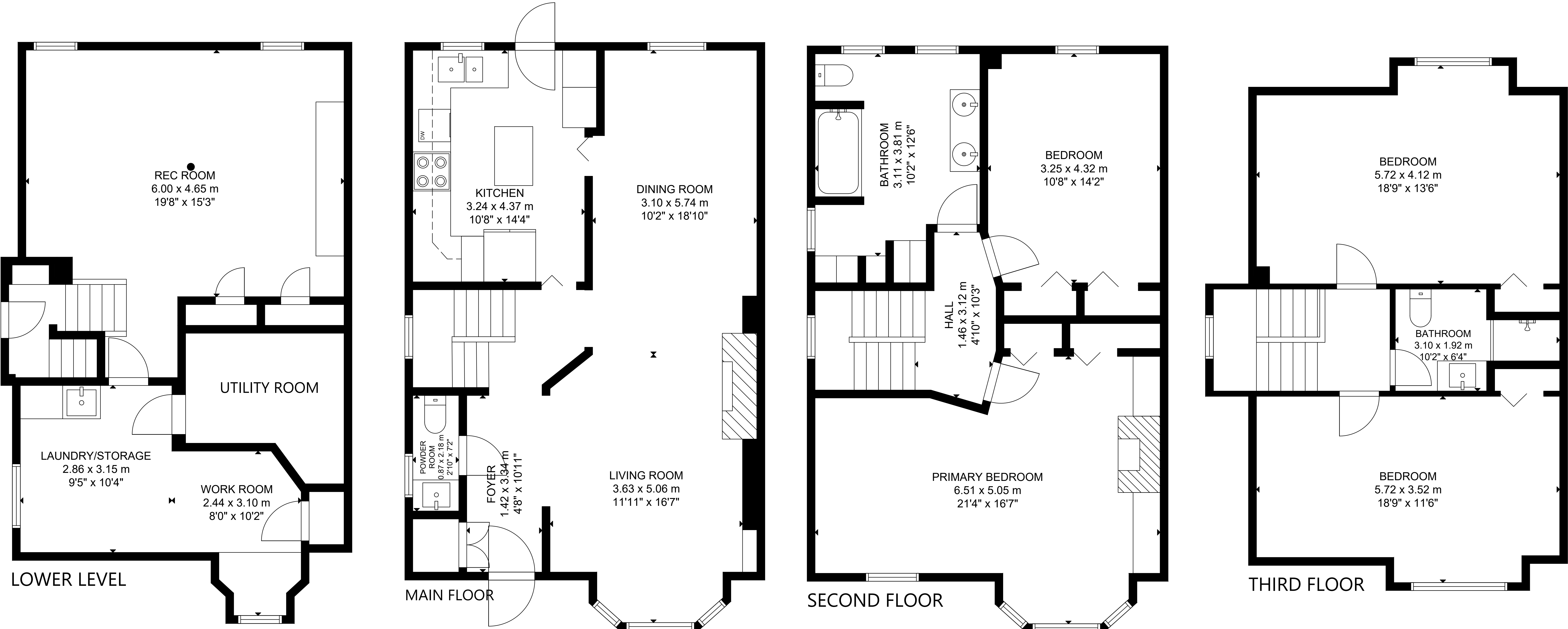


94 Pricefield Road



GROSS INTERNAL AREA
 MAIN FLOOR: 711 sq ft/ 66 m², SECOND FLOOR: 710 sq ft/ 66 m²
 THIRD FLOOR: 579 sq ft/ 54 m², LOWER LEVEL: 639 sq ft/ 59 m²
 TOTAL: 2,639 sq ft/ 245 m²
 SIZE AND DIMENSIONS ARE APPROXIMATE, ACTUAL MAY VARY.