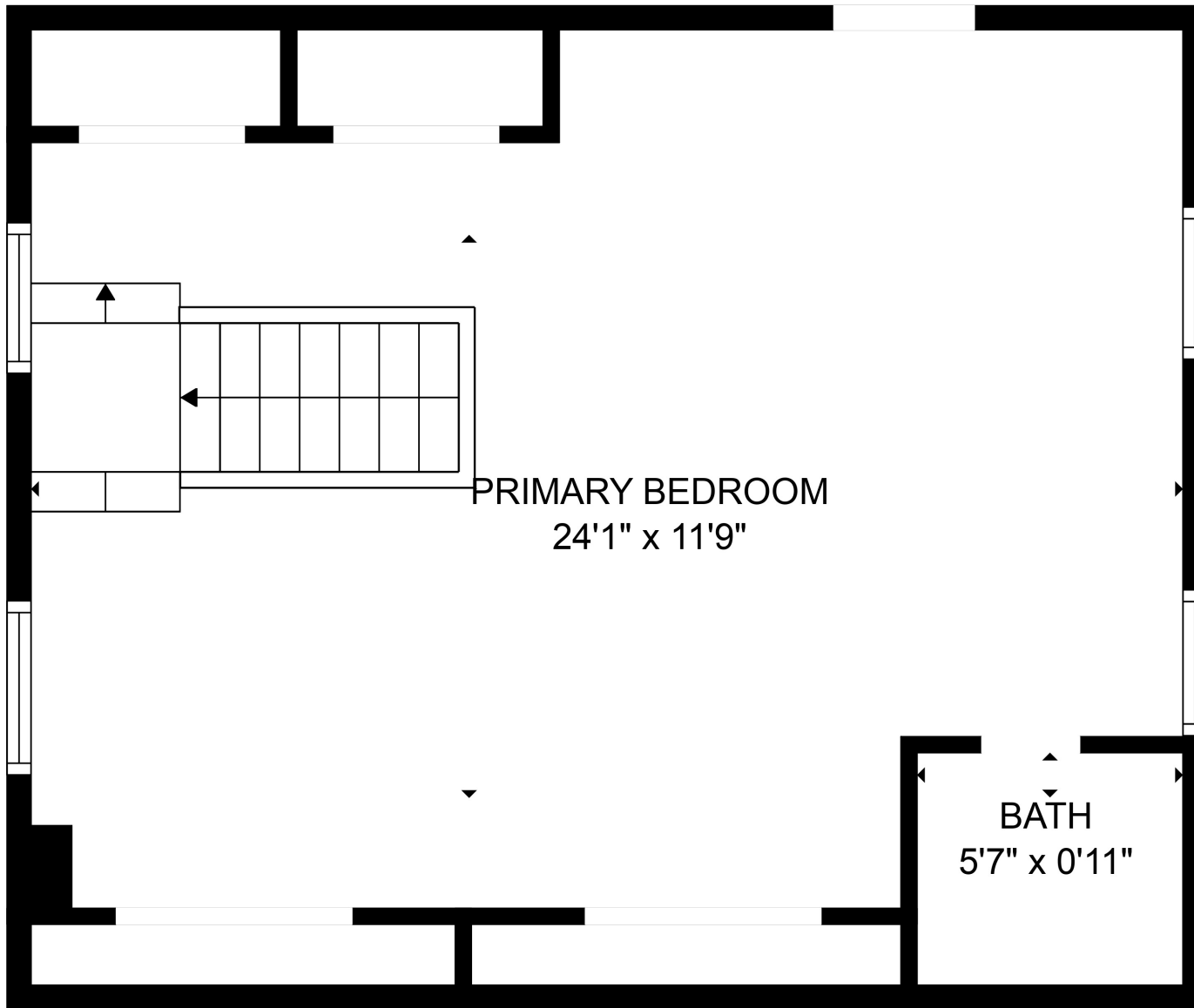


GROSS INTERNAL AREA
 Below Ground: 293 sq. ft, FLOOR 2: 1070 sq. ft, FLOOR 3: 481 sq. ft
 EXCLUDED AREAS: ROOM: 149 sq. ft, UNFINISHED BASEMENT: 391 sq. ft, FIREPLACE: 6 sq. ft
 TOTAL: 1844 sq. ft

Floor plans are intended to give a general indication of the property layout. Sizes and dimensions are estimate, Actual may vary.





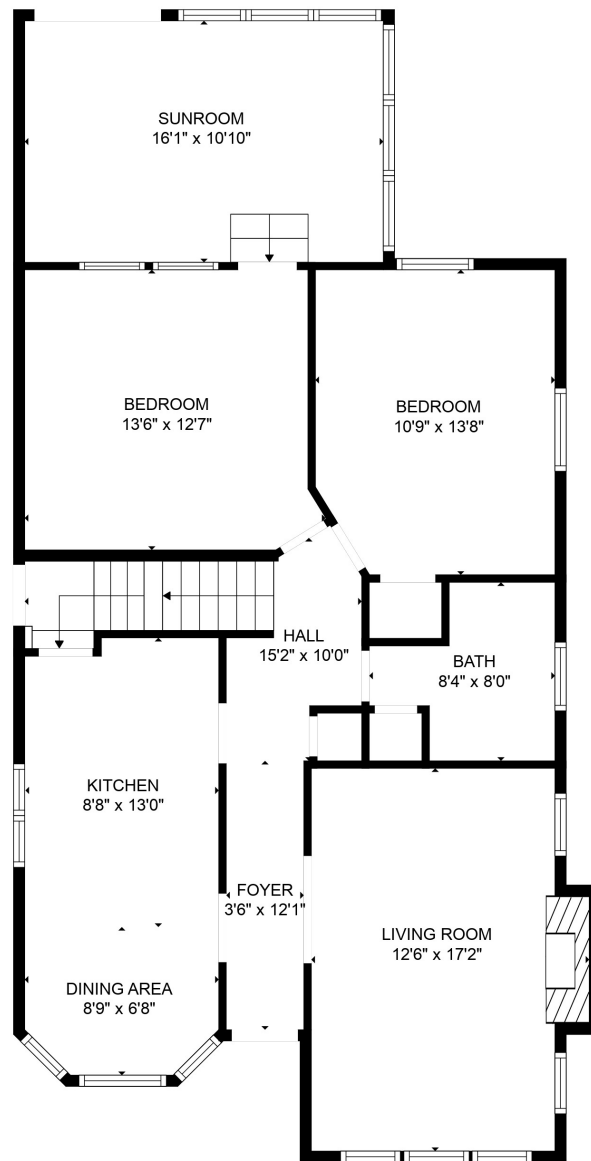
PRIMARY BEDROOM
24'1" x 11'9"

BATH
5'7" x 0'11"



GROSS INTERNAL AREA
Below Ground: 293 sq. ft, FLOOR 2: 1070 sq. ft, FLOOR 3: 481 sq. ft
EXCLUDED AREAS: ROOM: 149 sq. ft, UNFINISHED BASEMENT: 391 sq. ft, FIREPLACE: 6 sq. ft
TOTAL: 1844 sq. ft
Floor plans are intended to give a general indication of the property layout. Sizes and dimensions are estimate, Actual may vary.





GROSS INTERNAL AREA

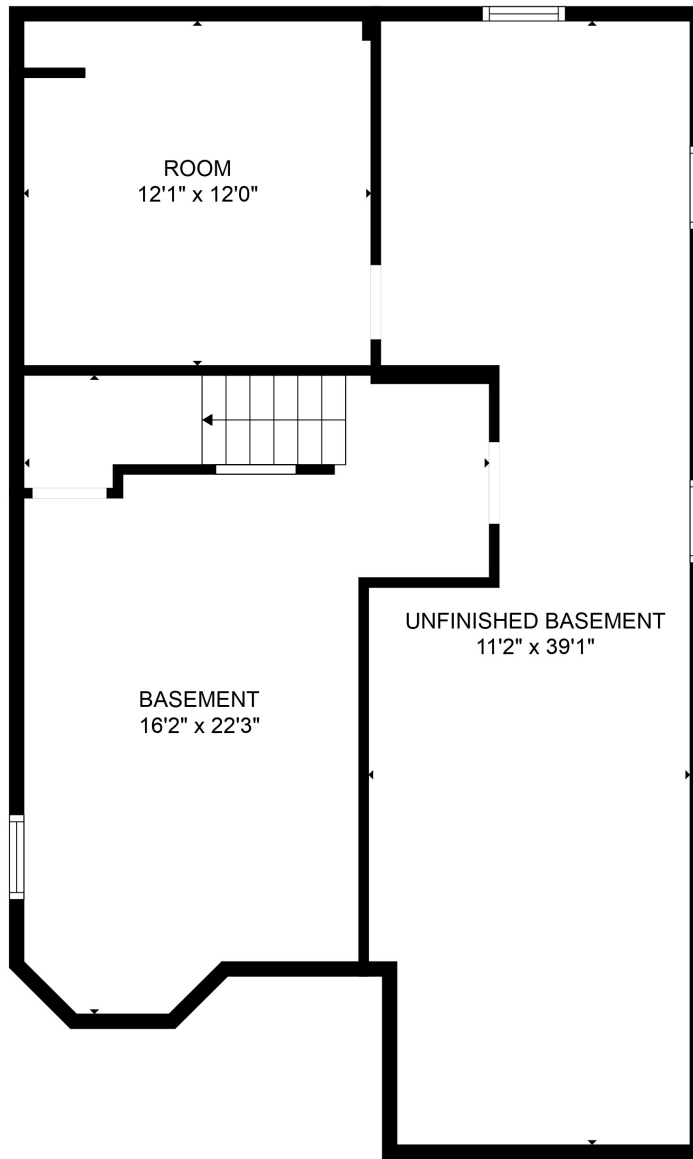
Below Ground: 293 sq. ft, FLOOR 2: 1070 sq. ft, FLOOR 3: 481 sq. ft

EXCLUDED AREAS: ROOM: 149 sq. ft, UNFINISHED BASEMENT: 391 sq. ft, FIREPLACE: 6 sq. ft

TOTAL: 1844 sq. ft

Floor plans are intended to give a general indication of the property layout. Sizes and dimensions are estimate, Actual may vary.





GROSS INTERNAL AREA
Below Ground: 293 sq. ft, FLOOR 2: 1070 sq. ft, FLOOR 3: 481 sq. ft
EXCLUDED AREAS: ROOM: 149 sq. ft, UNFINISHED BASEMENT: 391 sq. ft, FIREPLACE: 6 sq. ft
TOTAL: 1844 sq. ft

Floor plans are intended to give a general indication of the property layout. Sizes and dimensions are estimate, Actual may vary.

