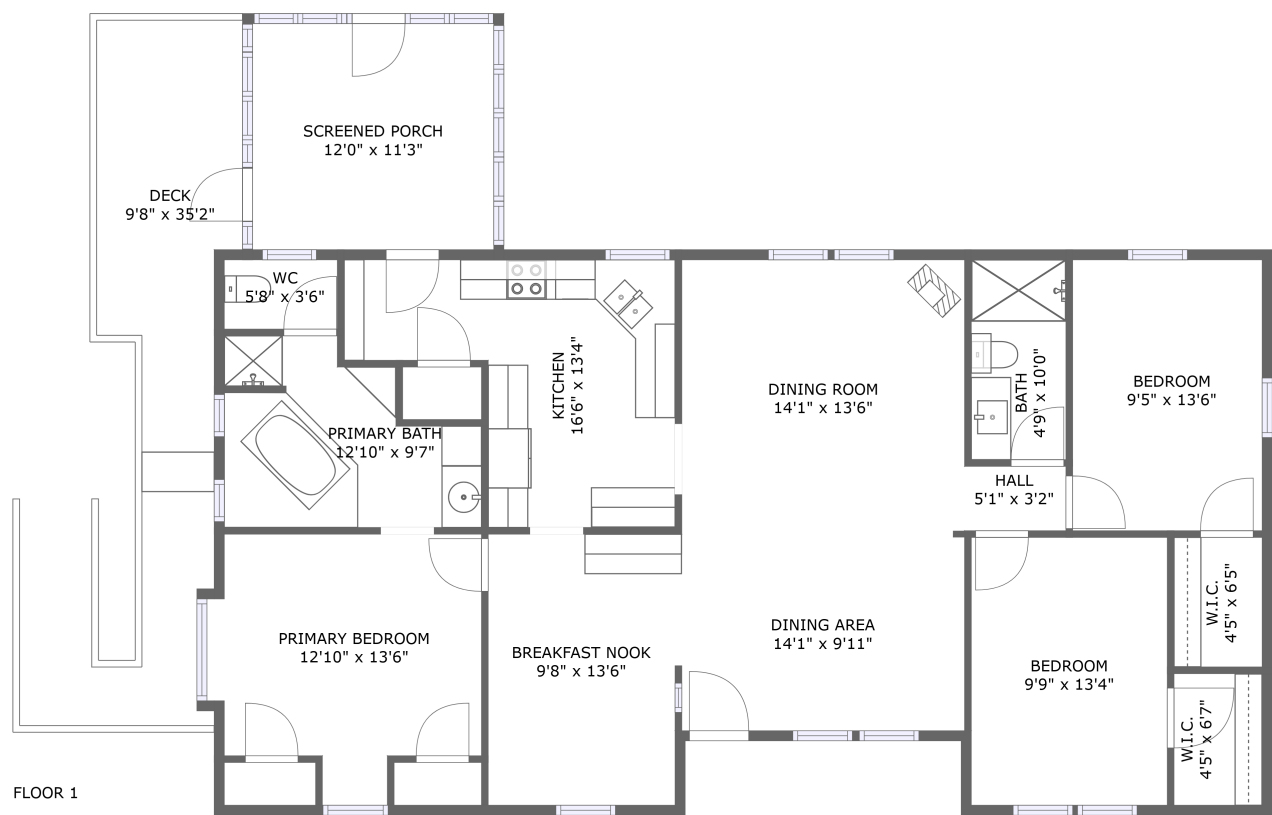




Home report


8799 Holdsworth Road, Disputanta, Prince George County,
Virginia, United States, 23842




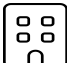
Property summary


 **0** Garages


 **3** Bedrooms

 **2** Bathrooms

 **0** Half baths

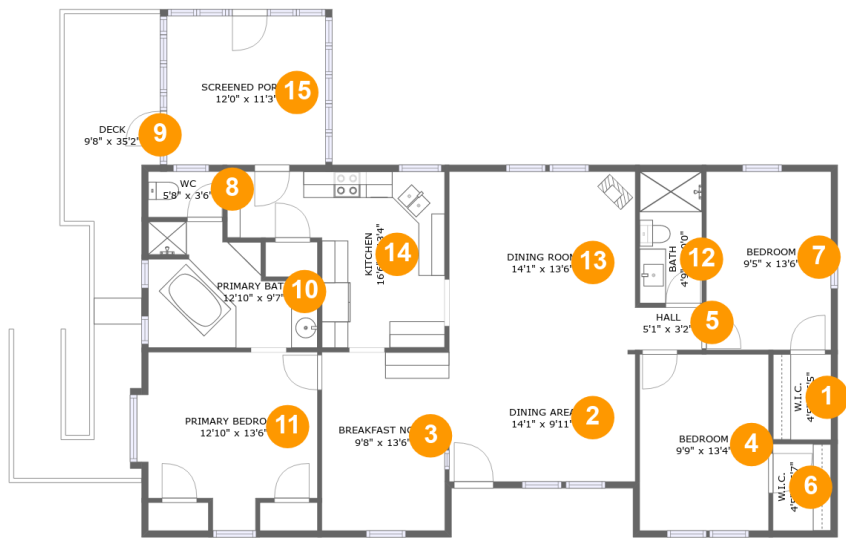
 **1** Floors

 **1,436** Gross living area sqft

 **1,815** Total sqft

Home report

8799 Holdsworth Road, Disputanta, Prince George County,
Virginia, United States, 23842



Room dimensions

Floor 1 Total sqft: 1815 Living area: 1436

#		Max Dimensions	sqft	Included
1	W.I.C.	4'5" x 6'5"	28 sq. ft	Yes
2	Dining Area	14'1" x 9'11"	141 sq. ft	Yes
3	Breakfast Nook	9'8" x 13'6"	128 sq. ft	Yes
4	Bedroom	9'9" x 13'4"	130 sq. ft	Yes
5	Hall	5'1" x 3'2"	16 sq. ft	Yes
6	W.I.C.	4'5" x 6'7"	29 sq. ft	Yes
7	Bedroom	9'5" x 13'6"	128 sq. ft	Yes
8	WC	5'8" x 3'6"	19 sq. ft	Yes
9	Deck	9'8" x 35'2"	221 sq. ft	No
10	Primary Bath	12'10" x 9'7"	98 sq. ft	Yes
11	Primary Bedroom	12'10" x 13'6"	150 sq. ft	Yes

Home report

**8799 Holdsworth Road, Disputanta, Prince George County,
Virginia, United States, 23842**

#		Max Dimensions	sqft	Included
12	Bath	4'9" x 10'0"	47 sq. ft	Yes
13	Dining Room	14'1" x 13'6"	190 sq. ft	Yes
14	Kitchen	16'6" x 13'4"	160 sq. ft	Yes
15	Screened Porch	12'0" x 11'3"	136 sq. ft	No

8799 Holdsworth Road, Disputanta, Prince George County,
Virginia, United States, 23842

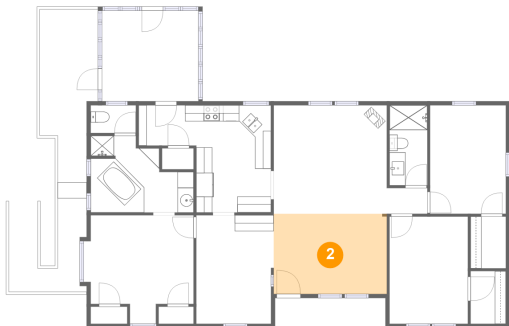
1 Floor 1 - W.I.C.



Max Dimensions: 4'5" x 6'5"
Calculated Area: 28 sq. ft
Included: Yes

Heated: Yes
Finished: Yes
Enclosed: Yes
Contiguous: Yes
Permitted: Yes
Wet space: No
Addition: No
Conversion: No

2 Floor 1 - Dining Area

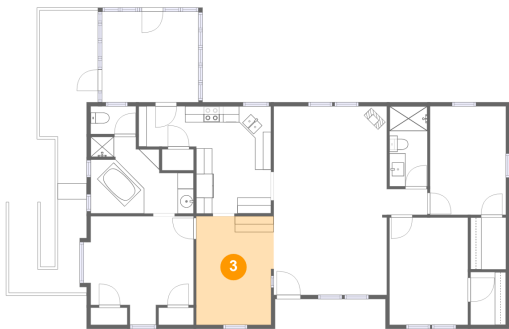


Max Dimensions: 14'1" x 9'11"
Calculated Area: 141 sq. ft
Included: Yes

Heated: Yes
Finished: Yes
Enclosed: Yes
Contiguous: Yes
Permitted: Yes
Wet space: No
Addition: No
Conversion: No

8799 Holdsworth Road, Disputanta, Prince George County,
Virginia, United States, 23842

3 Floor 1 - Breakfast Nook



Max Dimensions: 9'8" x 13'6"
Calculated Area: 128 sq. ft
Included: Yes

Heated: Yes
Finished: Yes
Enclosed: Yes
Contiguous: Yes
Permitted: Yes
Wet space: No
Addition: No
Conversion: No

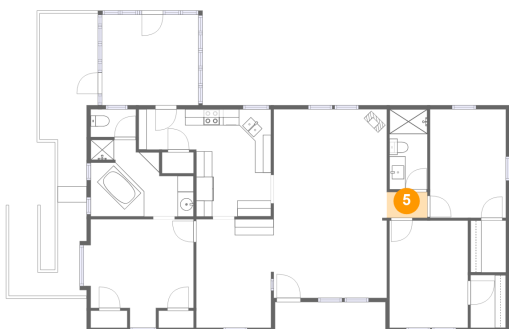
4 Floor 1 - Bedroom



Max Dimensions: 9'9" x 13'4"
Calculated Area: 130 sq. ft
Included: Yes

Heated: Yes
Finished: Yes
Enclosed: Yes
Contiguous: Yes
Permitted: Yes
Wet space: No
Addition: No
Conversion: No

5 Floor 1 - Hall



Max Dimensions: 5'1" x 3'2"
Calculated Area: 16 sq. ft
Included: Yes

Heated: Yes
Finished: Yes
Enclosed: Yes
Contiguous: Yes
Permitted: Yes
Wet space: No
Addition: No
Conversion: No

8799 Holdsworth Road, Disputanta, Prince George County,
Virginia, United States, 23842

6 Floor 1 - W.I.C.



Max Dimensions: 4'5" x 6'7"
Calculated Area: 29 sq. ft
Included: Yes

Heated: Yes
Finished: Yes
Enclosed: Yes
Contiguous: Yes
Permitted: Yes
Wet space: No
Addition: No
Conversion: No

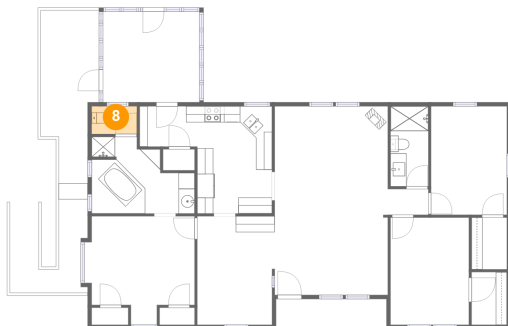
7 Floor 1 - Bedroom



Max Dimensions: 9'5" x
13'6"
Calculated Area: 128 sq. ft
Included: Yes

Heated: Yes
Finished: Yes
Enclosed: Yes
Contiguous:
Yes
Permitted: Yes
Wet space: No
Addition: No
Conversion: No

8 Floor 1 - WC



Max Dimensions: 5'8" x 3'6"
Calculated Area: 19 sq. ft
Included: Yes

Heated: Yes
Finished: Yes
Enclosed: Yes
Contiguous: Yes
Permitted: Yes
Wet space: Yes
Addition: No
Conversion: No

8799 Holdsworth Road, Disputanta, Prince George County,
Virginia, United States, 23842

9 Floor 1 - Deck



Max Dimensions: 9'8" x 35'2"
Calculated Area: 221 sq. ft
Included: No

Heated: No
Finished: Yes
Enclosed: No
Contiguous: Yes
Permitted: Yes
Wet space: No
Addition: No
Conversion: No

10 Floor 1 - Primary Bath



Max Dimensions: 12'10" x 9'7"
Calculated Area: 98 sq. ft
Included: Yes

Heated: Yes
Finished: Yes
Enclosed: Yes
Contiguous: Yes
Permitted: Yes
Wet space: Yes
Addition: No
Conversion: No

11 Floor 1 - Primary Bedroom



Max Dimensions: 12'10" x 13'6"
Calculated Area: 150 sq. ft
Included: Yes

Heated: Yes
Finished: Yes
Enclosed: Yes
Contiguous: Yes
Permitted: Yes
Wet space: No
Addition: No
Conversion: No

8799 Holdsworth Road, Disputanta, Prince George County,
Virginia, United States, 23842

12 Floor 1 - Bath



Max Dimensions: 4'9" x 10'0"
Calculated Area: 47 sq. ft
Included: Yes

Heated: Yes
Finished: Yes
Enclosed: Yes
Contiguous: Yes
Permitted: Yes
Wet space: Yes
Addition: No
Conversion: No

13 Floor 1 - Dining Room



Max Dimensions: 14'1" x 13'6"
Calculated Area: 190 sq. ft
Included: Yes

Heated: Yes
Finished: Yes
Enclosed: Yes
Contiguous: Yes
Permitted: Yes
Wet space: No
Addition: No
Conversion: No

14 Floor 1 - Kitchen



Max Dimensions: 16'6" x 13'4"
Calculated Area: 160 sq. ft
Included: Yes

Heated: Yes
Finished: Yes
Enclosed: Yes
Contiguous: Yes
Permitted: Yes
Wet space: No
Addition: No
Conversion: No

8799 Holdsworth Road, Disputanta, Prince George County,
Virginia, United States, 23842

15 Floor 1 - Screened Porch



Max Dimensions: 12'0" x 11'3"
Calculated Area: 136 sq. ft
Included: No

Heated: No
Finished: Yes
Enclosed: No
Contiguous: Yes
Permitted: Yes
Wet space: No
Addition: No
Conversion: No