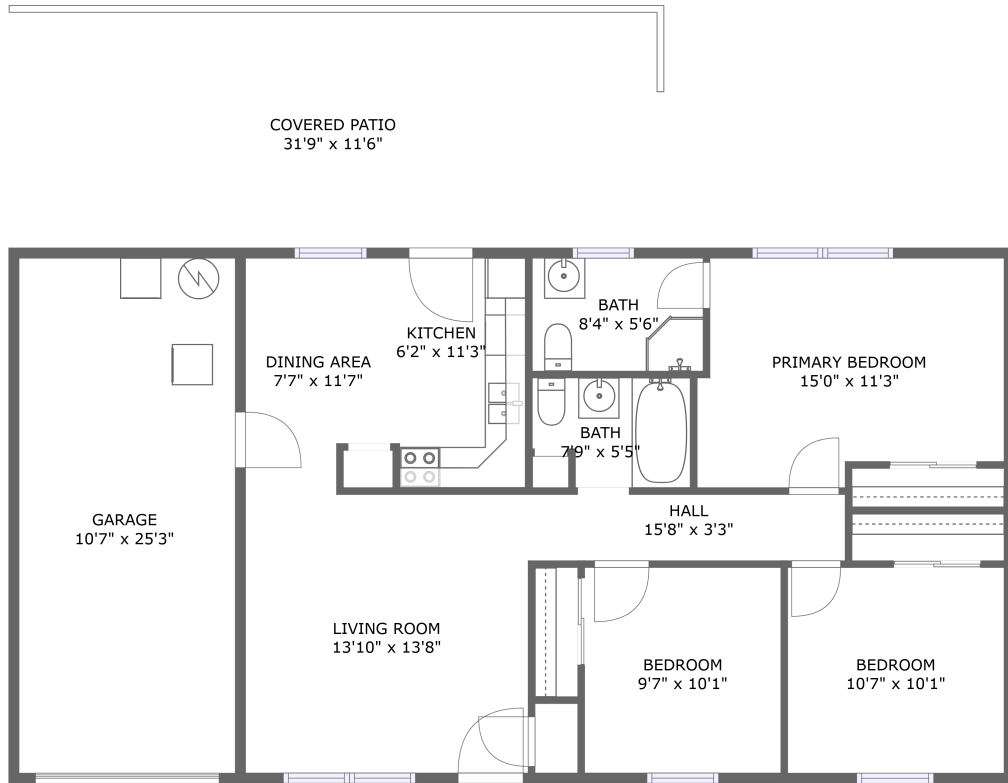


# 14001 Hurstland Drive Southwest, Farly Community, Huntsville, Madison County,




FLOOR 1

## Property Summary

 **1** garages

 **3** bedrooms

 **2** bathrooms

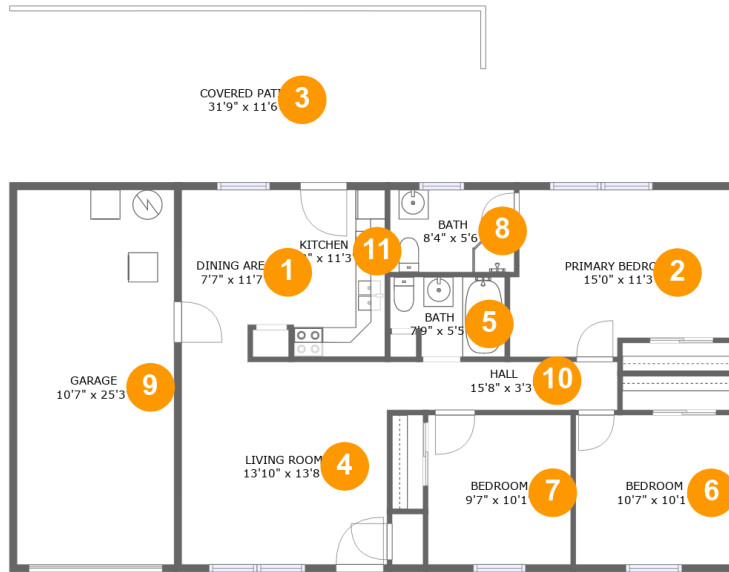
 **0** half baths

 **1** floors

 **1,000** Gross Living Area sqft

 **1,657** total sqft

# 14001 Hurstland Drive Southwest, Farly Community, Huntsville, Madison County,



## Room Dimensions

Floor 1

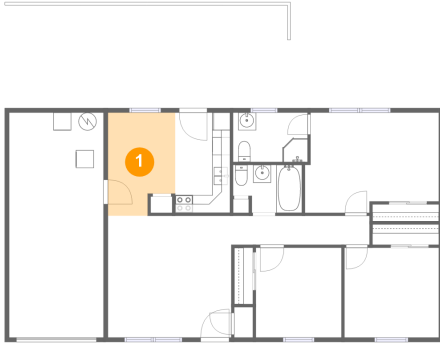
Total sqft: 1657

Living area: 1000

#	Room name	Dimensions	Area (sqft)	Counted as Living Area
1	Dining Area	7'7" x 11'7"	80 sq. ft	Yes
2	Primary Bedroom	15'0" x 11'3"	155 sq. ft	Yes
3	Covered Patio	31'9" x 11'6"	366 sq. ft	No
4	Living Room	13'10" x 13'8"	188 sq. ft	Yes
5	Bath	7'9" x 5'5"	38 sq. ft	Yes
6	Bedroom	10'7" x 10'1"	107 sq. ft	Yes
7	Bedroom	9'7" x 10'1"	97 sq. ft	Yes
8	Bath	8'4" x 5'6"	46 sq. ft	Yes
9	Garage	10'7" x 25'3"	267 sq. ft	No
10	Hall	15'8" x 3'3"	51 sq. ft	Yes
11	Kitchen	6'2" x 11'3"	69 sq. ft	Yes

# 14001 Hurstland Drive Southwest, Farly Community, Huntsville, Madison County,

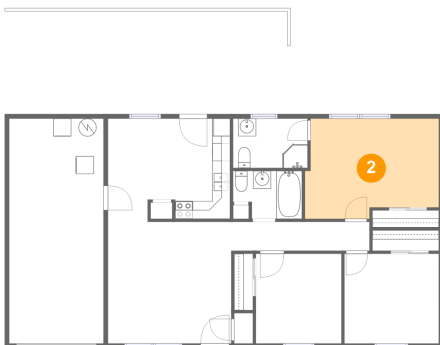
## 1 Floor 1 - Dining Area



Dimensions: 7'7" x 11'7"  
Area: 80 sq. ft  
Counted as Living Area:  
Yes

Heated: Yes  
Finished: Yes  
Enclosed: Yes  
Contiguous:  
Yes  
Permitted: Yes  
Wet Space: No  
Addition: No  
Conversion: No

## 2 Floor 1 - Primary Bedroom

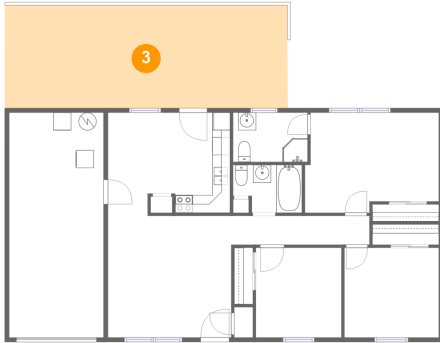


Dimensions: 15'0" x 11'3"  
Area: 155 sq. ft  
Counted as Living Area:  
Yes

Heated: Yes  
Finished: Yes  
Enclosed: Yes  
Contiguous:  
Yes  
Permitted: Yes  
Wet Space: No  
Addition: No  
Conversion: No

# 14001 Hurstland Drive Southwest, Farly Community, Huntsville, Madison County,

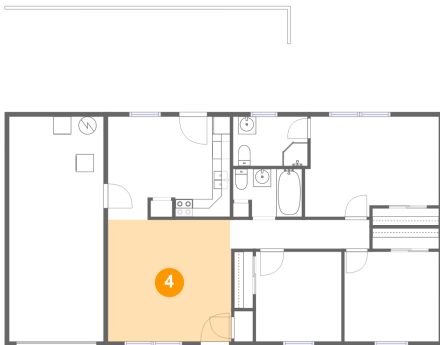
## 3 Floor 1 - Covered Patio



Dimensions: 31'9" x 11'6"  
Area: 366 sq. ft  
Counted as Living Area: No

Heated: No  
Finished: Yes  
Enclosed: No  
Contiguous: Yes  
Permitted: Yes  
Wet Space: No  
Addition: No  
Conversion: No

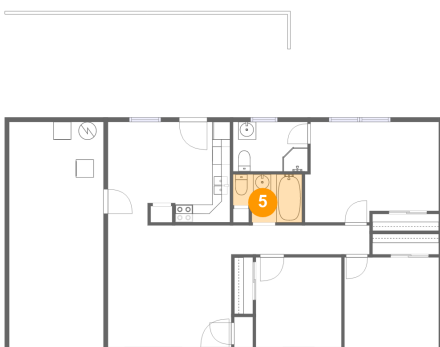
## 4 Floor 1 - Living Room



Dimensions: 13'10" x 13'8"  
Area: 188 sq. ft  
Counted as Living Area:  
Yes

Heated: Yes  
Finished: Yes  
Enclosed: Yes  
Contiguous:  
Yes  
Permitted: Yes  
Wet Space: No  
Addition: No  
Conversion: No

## 5 Floor 1 - Bath

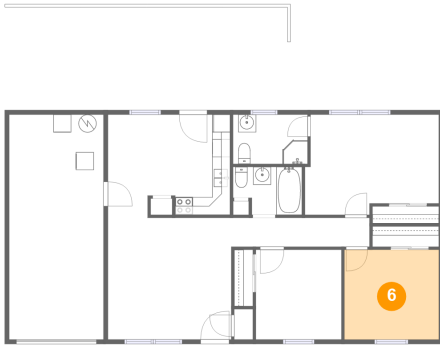


Dimensions: 7'9" x 5'5"  
Area: 38 sq. ft  
Counted as Living Area:  
Yes

Heated: Yes  
Finished: Yes  
Enclosed: Yes  
Contiguous:  
Yes  
Permitted: Yes  
Wet Space: Yes  
Addition: No  
Conversion: No

# 14001 Hurstland Drive Southwest, Farly Community, Huntsville, Madison County,

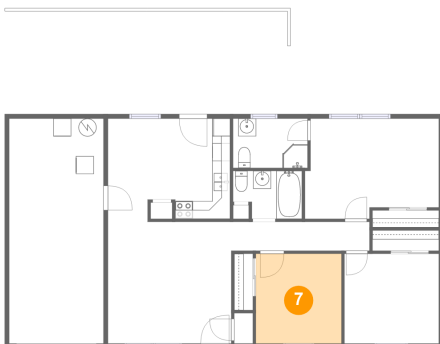
## 6 Floor 1 - Bedroom



Dimensions: 10'7" x 10'1"  
Area: 107 sq. ft  
Counted as Living Area:  
Yes

Heated: Yes  
Finished: Yes  
Enclosed: Yes  
Contiguous:  
Yes  
Permitted: Yes  
Wet Space: No  
Addition: No  
Conversion: No

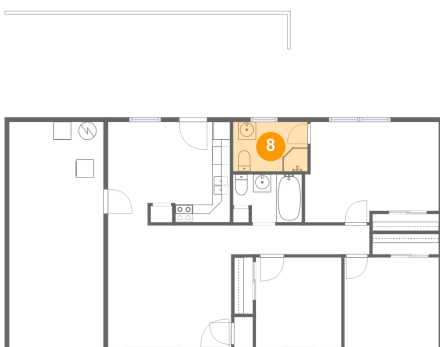
## 7 Floor 1 - Bedroom



Dimensions: 9'7" x 10'1"  
Area: 97 sq. ft  
Counted as Living Area:  
Yes

Heated: Yes  
Finished: Yes  
Enclosed: Yes  
Contiguous:  
Yes  
Permitted: Yes  
Wet Space: No  
Addition: No  
Conversion: No

## 8 Floor 1 - Bath

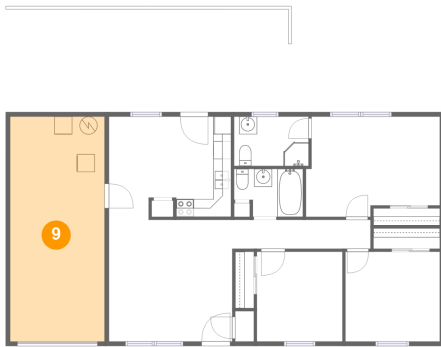


Dimensions: 8'4" x 5'6"  
Area: 46 sq. ft  
Counted as Living Area:  
Yes

Heated: Yes  
Finished: Yes  
Enclosed: Yes  
Contiguous:  
Yes  
Permitted: Yes  
Wet Space: Yes  
Addition: No  
Conversion: No

# 14001 Hurstland Drive Southwest, Farly Community, Huntsville, Madison County,

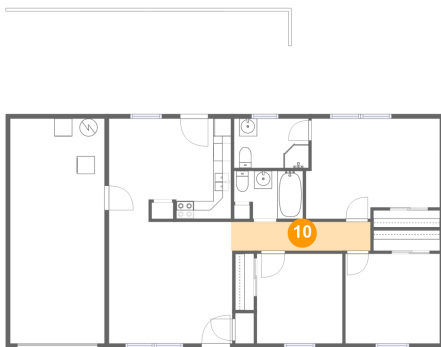
## 9 Floor 1 - Garage



Dimensions: 10'7" x 25'3"  
Area: 267 sq. ft  
Counted as Living Area: No

Heated: No  
Finished: No  
Enclosed: Yes  
Contiguous: Yes  
Permitted: Yes  
Wet Space: No  
Addition: No  
Conversion: No

## 10 Floor 1 - Hall



Dimensions: 15'8" x 3'3"  
Area: 51 sq. ft  
Counted as Living Area:  
Yes

Heated: Yes  
Finished: Yes  
Enclosed: Yes  
Contiguous:  
Yes  
Permitted: Yes  
Wet Space: No  
Addition: No  
Conversion: No

## 11 Floor 1 - Kitchen



Dimensions: 6'2" x 11'3"  
Area: 69 sq. ft  
Counted as Living Area:  
Yes

Heated: Yes  
Finished: Yes  
Enclosed: Yes  
Contiguous:  
Yes  
Permitted: Yes  
Wet Space: No  
Addition: No  
Conversion: No