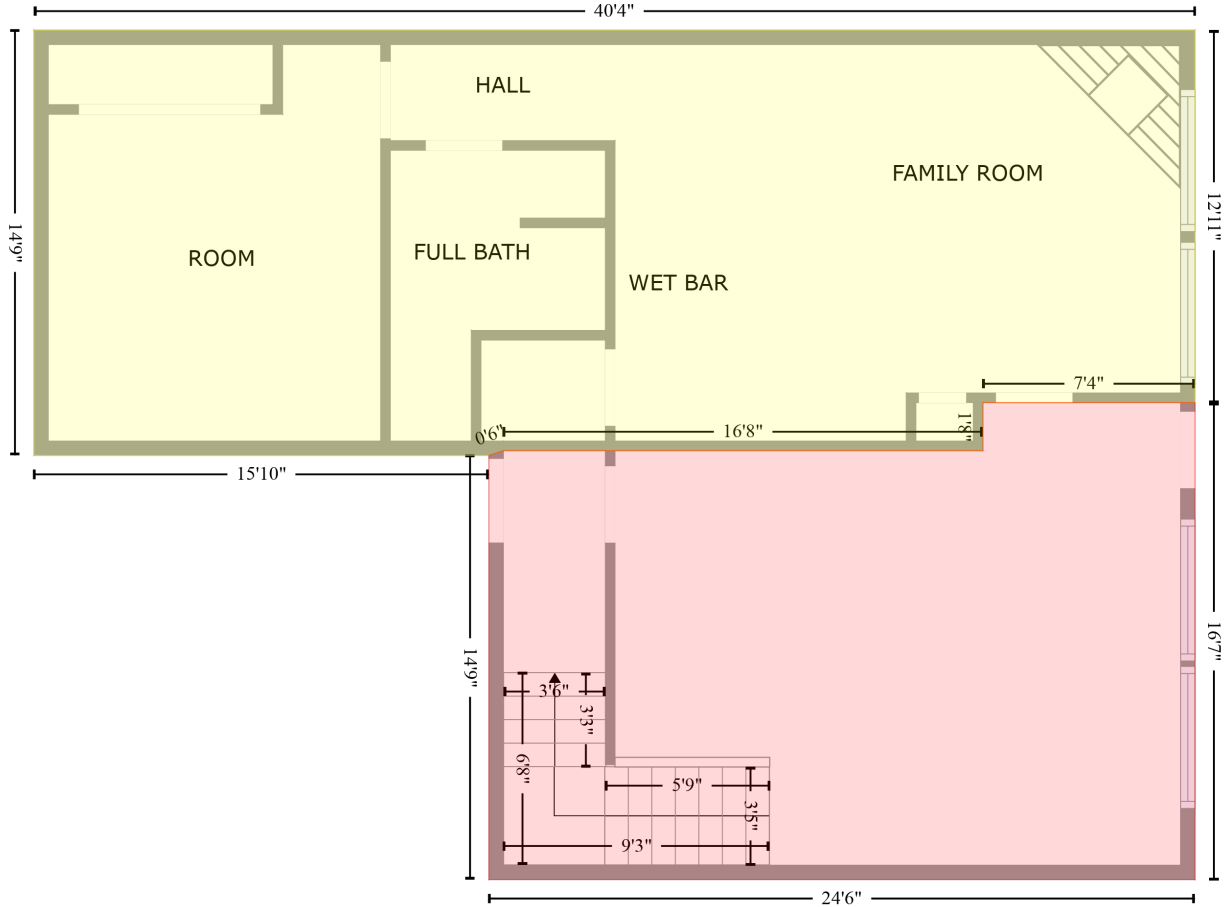


# 254 Bradford Road, Altoona, Etowah County, Alabama, United States, 35952

Gross Living Area: 2038 sq. ft

FLOOR 1  
[AREA: 579]



BASEMENT (1)  
[AREA: 378]

Space	Area (sq. ft)	Calculation <small>Coordinate Polygon Area Algorithm using inches</small>
FLOOR 1 (Living area)	579	$-((0.9 + 484.9) * (65.1 - 65.1) + (484.9 + 484.9) * (65.1 - 220.3) + (484.9 + 396.5) * (220.3 - 220.3) + (396.5 + 396.5) * (220.3 - 240.3) + (396.5 + 196.6) * (240.3 - 240.3) + (196.6 + 190.6) * (240.3 - 242.3) + (190.6 + 0.9) * (242.3 - 242.3) + (0.9 + 0.9) * (242.3 - 65.1)) * 0.5 * 0.00694$
BASEMENT (Non-living area)	378	$-((484.9 + 484.9) * (220.3 - 419.1) + (484.9 + 190.6) * (419.1 - 419.1) + (190.6 + 190.6) * (419.1 - 242.3) + (190.6 + 196.6) * (242.3 - 240.3) + (196.6 + 396.5) * (240.3 - 240.3) + (396.5 + 396.5) * (240.3 - 220.3) + (396.5 + 484.9) * (220.3 - 220.3)) * 0.5 * 0.00694$

# 254 Bradford Road, Altoona, Etowah County, Alabama, United States, 35952

Gross Living Area: 2038 sq. ft

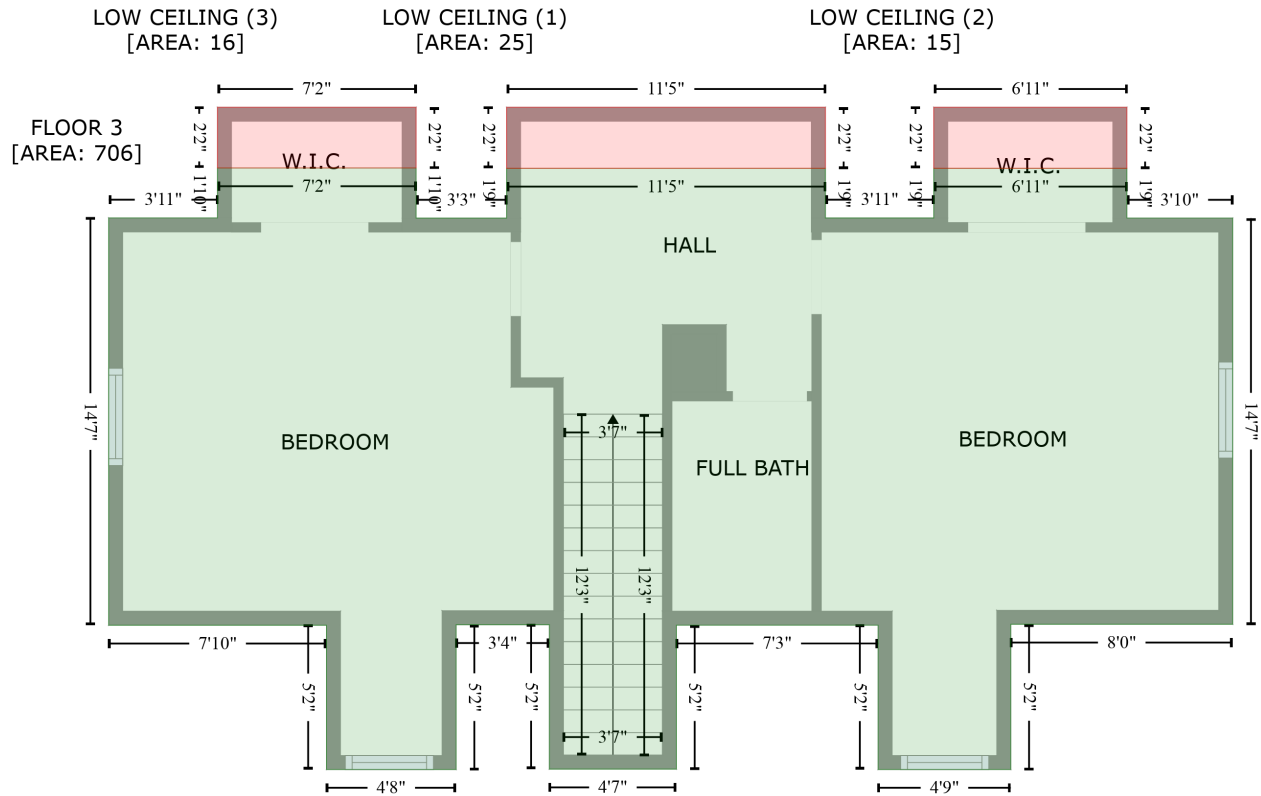
FLOOR 2  
[AREA: 1332]



Space	Area (sq. ft)	Calculation <small>Coordinate Polygon Area Algorithm using inches</small>
FLOOR 2 (Living area)	1332	$-\left((126.5 + 126.5) * (2.5 - 142.6) + (126.5 + 485.1) * (142.6 - 142.6) + (485.1 + 485.1) * (142.6 - 502.6) + (485.1 + 1.1) * (502.6 - 502.6) + (1.1 + 1.1) * (502.6 - 2.5) + (1.1 + 126.5) * (2.5 - 2.5)\right) * 0.5 * 0.00694$

# 254 Bradford Road, Altoona, Etowah County, Alabama, United States, 35952

Gross Living Area: 2038 sq. ft



Space	Area (sq. ft)	Calculation <small>Coordinate Polygon Area Algorithm using inches</small>
FLOOR 3 (Living area)	706	$-\left((133.3 + 133.3) * (215.4 - 237) + (133.3 + 172.2) * (237 - 237) + (172.2 + 172.2) * (237 - 215.5) + (172.2 + 309.5) * (215.5 - 215.5) + (309.5 + 309.5) * (215.5 - 236.9) + (309.5 + 356.2) * (236.9 - 236.9) + (356.2 + 356.2) * (236.9 - 215.5) + (356.2 + 439.3) * (215.5 - 215.5) + (439.3 + 439.3) * (215.5 - 237) + (439.3 + 484.9) * (237 - 237) + (484.9 + 484.9) * (237 - 411.7) + (484.9 + 389.4) * (411.7 - 411.7) + (389.4 + 389.4) * (411.7 - 474.2) + (389.4 + 332.2) * (474.2 - 474.2) + (332.2 + 332.2) * (474.2 - 412.1) + (332.2 + 245.4) * (412.1 - 412.1) + (245.4 + 245.4) * (412.1 - 474) + (245.4 + 190.7) * (474 - 474) + (190.7 + 190.7) * (474 - 411.9) + (190.7 + 150.5) * (411.9 - 411.9) + (150.5 + 150.5) * (411.9 - 474.2) + (150.5 + 94.7) * (474.2 - 474.2) + (94.7 + 94.7) * (474.2 - 412.1) + (94.7 + 0.9) * (412.1 - 412.1) + (0.9 + 0.9) * (412.1 - 236.9) + (0.9 + 47.7) * (236.9 - 236.9) + (47.7 + 47.7) * (236.9 - 215.4) + (47.7 + 133.3) * (215.4 - 215.4) * 0.5 * 0.00694$
LOW CEILING (Non-living area)	25	$-\left((309.5 + 309.5) * (189.3 - 215.5) + (309.5 + 172.2) * (215.5 - 215.5) + (172.2 + 172.2) * (215.5 - 189.3) + (172.2 + 309.5) * (189.3 - 189.3) * 0.5 * 0.00694$
LOW CEILING (Non-living area)	15	$-\left((439.3 + 439.3) * (189.3 - 215.5) + (439.3 + 356.2) * (215.5 - 215.5) + (356.2 + 356.2) * (215.5 - 189.3) + (356.2 + 439.3) * (189.3 - 189.3) * 0.5 * 0.00694$
LOW CEILING (Non-living area)	16	$-\left((133.3 + 133.3) * (189.3 - 215.4) + (133.3 + 47.7) * (215.4 - 215.4) + (47.7 + 47.7) * (215.4 - 189.3) + (47.7 + 133.3) * (189.3 - 189.3) * 0.5 * 0.00694$