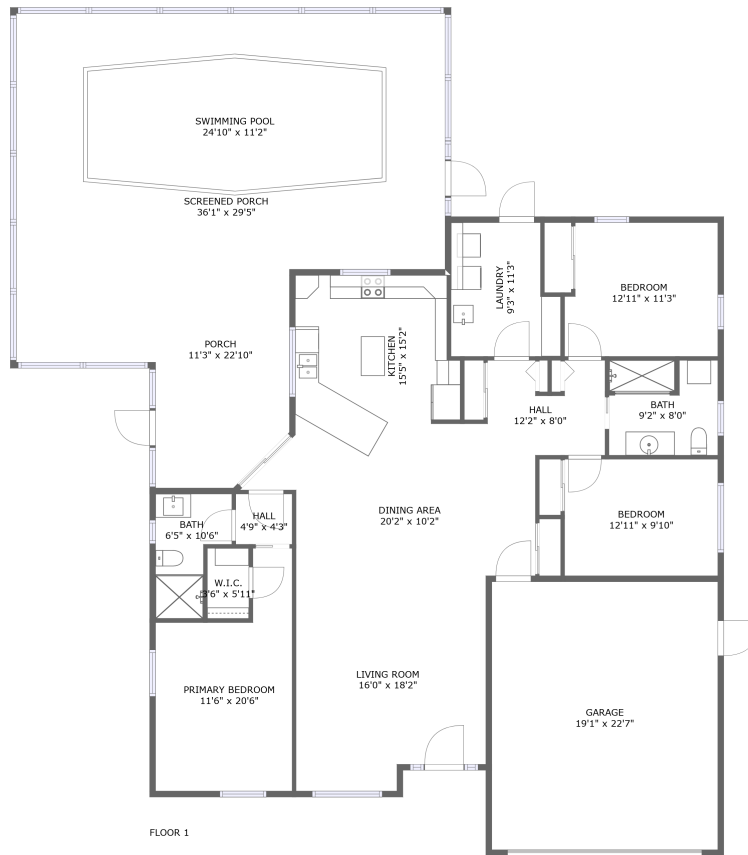


# 3180 Indra Road, South Venice, Venice, Sarasota County, Florida, United States, 34293




## Property Summary

 **1** garages

 **3** bedrooms

 **2** bathrooms

 **0** half baths

 **1** floors

 **1,679**  
Gross Living Area sqft

 **3,001**  
total sqft

# 3180 Indra Road, South Venice, Venice, Sarasota County, Florida, United States, 34293



## Room Dimensions

Floor 1

Total sqft: 3001

Living area: 1679

#	Room name	Dimensions	Area (sqft)	Counted as Living Area
1	Screened Porch	36'1" x 29'5"	823 sq. ft	No
2	Bedroom	12'11" x 11'3"	140 sq. ft	Yes
3	Hall	4'9" x 4'3"	20 sq. ft	Yes
4	Dining Area	20'2" x 10'2"	215 sq. ft	Yes
5	Bath	9'2" x 8'0"	72 sq. ft	Yes
6	Porch	11'3" x 22'10"	246 sq. ft	No
7	Hall	12'2" x 8'0"	78 sq. ft	Yes
8	Garage	19'1" x 22'7"	431 sq. ft	No
9	Bedroom	12'11" x 9'10"	127 sq. ft	Yes
10	Laundry	9'3" x 11'3"	94 sq. ft	Yes
11	Primary Bedroom	11'6" x 20'6"	184 sq. ft	Yes

Scan captured on Thu, 06 Jun 2024 04:23:54 GMT

Information is calculated by CubiCasa technology; deemed highly reliable but not guaranteed.

**3180 Indra Road, South Venice, Venice, Sarasota  
County, Florida, United States, 34293**

#	Room name	Dimensions	Area (sqft)	Counted as Living Area
12	Kitchen	15'5" x 15'2"	204 sq. ft	Yes
13	Bath	6'5" x 10'6"	53 sq. ft	Yes
14	Swimming Pool	24'10" x 11'2"	251 sq. ft	No
15	Living Room	16'0" x 18'2"	273 sq. ft	Yes
16	W.i.c.	3'6" x 5'11"	21 sq. ft	Yes

# 3180 Indra Road, South Venice, Venice, Sarasota County, Florida, United States, 34293

## 1 Floor 1 - Screened Porch



**Dimensions:** 36'1" x 29'5"  
**Area:** 823 sq. ft  
**Counted as Living Area:** No

**Heated:** No  
**Finished:** Yes  
**Enclosed:** No  
**Contiguous:** Yes  
**Permitted:** Yes  
**Wet Space:** No  
**Addition:** No  
**Conversion:** No

## 2 Floor 1 - Bedroom

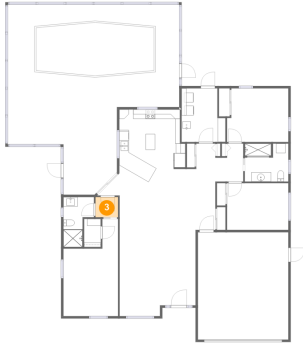


**Dimensions:** 12'11" x 11'3"  
**Area:** 140 sq. ft  
**Counted as Living Area:** Yes

**Heated:** Yes  
**Finished:** Yes  
**Enclosed:** Yes  
**Contiguous:** Yes  
**Permitted:** Yes  
**Wet Space:** No  
**Addition:** No  
**Conversion:** No

# 3180 Indra Road, South Venice, Venice, Sarasota County, Florida, United States, 34293

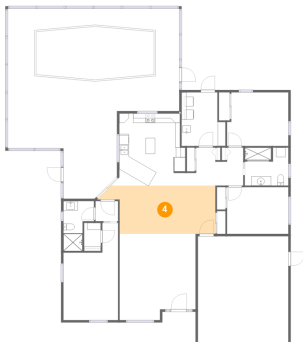
## 3 Floor 1 - Hall



Dimensions: 4'9" x 4'3"  
Area: 20 sq. ft  
Counted as Living Area:  
Yes

Heated: Yes  
Finished: Yes  
Enclosed: Yes  
Contiguous:  
Yes  
Permitted: Yes  
Wet Space: No  
Addition: No  
Conversion: No

## 4 Floor 1 - Dining Area



Dimensions: 20'2" x 10'2"  
Area: 215 sq. ft  
Counted as Living Area:  
Yes

Heated: Yes  
Finished: Yes  
Enclosed: Yes  
Contiguous:  
Yes  
Permitted: Yes  
Wet Space: No  
Addition: No  
Conversion: No

## 5 Floor 1 - Bath

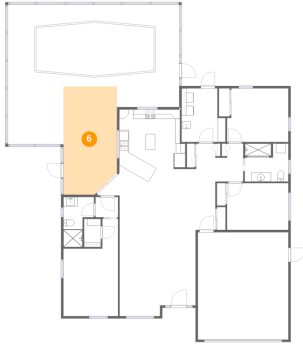


Dimensions: 9'2" x 8'0"  
Area: 72 sq. ft  
Counted as Living Area:  
Yes

Heated: Yes  
Finished: Yes  
Enclosed: Yes  
Contiguous:  
Yes  
Permitted: Yes  
Wet Space: Yes  
Addition: No  
Conversion: No

# 3180 Indra Road, South Venice, Venice, Sarasota County, Florida, United States, 34293

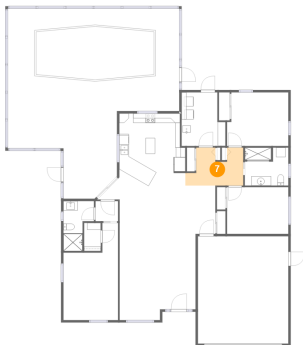
## 6 Floor 1 - Porch



Dimensions: 11'3" x 22'10"  
Area: 246 sq. ft  
Counted as Living Area: No

Heated: No  
Finished: Yes  
Enclosed: No  
Contiguous: Yes  
Permitted: Yes  
Wet Space: No  
Addition: No  
Conversion: No

## 7 Floor 1 - Hall



Dimensions: 12'2" x 8'0"  
Area: 78 sq. ft  
Counted as Living Area: Yes

Heated: Yes  
Finished: Yes  
Enclosed: Yes  
Contiguous: Yes  
Permitted: Yes  
Wet Space: No  
Addition: No  
Conversion: No

## 8 Floor 1 - Garage

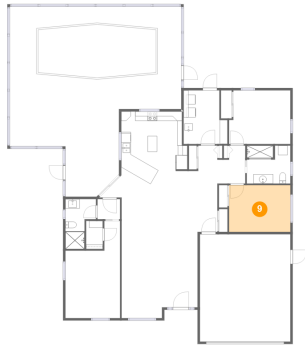


Dimensions: 19'1" x 22'7"  
Area: 431 sq. ft  
Counted as Living Area: No

Heated: No  
Finished: No  
Enclosed: Yes  
Contiguous: Yes  
Permitted: Yes  
Wet Space: No  
Addition: No  
Conversion: No

# 3180 Indra Road, South Venice, Venice, Sarasota County, Florida, United States, 34293

## 9 Floor 1 - Bedroom



Dimensions: 12'11" x 9'10"  
Area: 127 sq. ft  
Counted as Living Area:  
Yes

Heated: Yes  
Finished: Yes  
Enclosed: Yes  
Contiguous:  
Yes  
Permitted: Yes  
Wet Space: No  
Addition: No  
Conversion: No

## 10 Floor 1 - Laundry



Dimensions: 9'3" x 11'3"  
Area: 94 sq. ft  
Counted as Living Area:  
Yes

Heated: Yes  
Finished: Yes  
Enclosed: Yes  
Contiguous:  
Yes  
Permitted: Yes  
Wet Space: No  
Addition: No  
Conversion: No

## 11 Floor 1 - Primary Bedroom

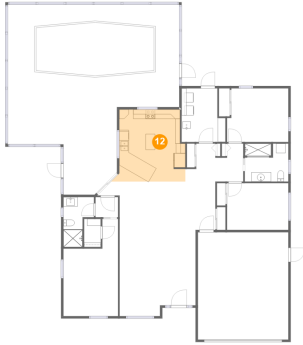


Dimensions: 11'6" x 20'6"  
Area: 184 sq. ft  
Counted as Living Area:  
Yes

Heated: Yes  
Finished: Yes  
Enclosed: Yes  
Contiguous:  
Yes  
Permitted: Yes  
Wet Space: No  
Addition: No  
Conversion: No

# 3180 Indra Road, South Venice, Venice, Sarasota County, Florida, United States, 34293

## 12 Floor 1 - Kitchen



Dimensions: 15'5" x 15'2"  
Area: 204 sq. ft  
Counted as Living Area:  
Yes

Heated: Yes  
Finished: Yes  
Enclosed: Yes  
Contiguous:  
Yes  
Permitted: Yes  
Wet Space: No  
Addition: No  
Conversion: No

## 13 Floor 1 - Bath



Dimensions: 6'5" x 10'6"  
Area: 53 sq. ft  
Counted as Living Area:  
Yes

Heated: Yes  
Finished: Yes  
Enclosed: Yes  
Contiguous:  
Yes  
Permitted: Yes  
Wet Space: Yes  
Addition: No  
Conversion: No

## 14 Floor 1 - Swimming Pool



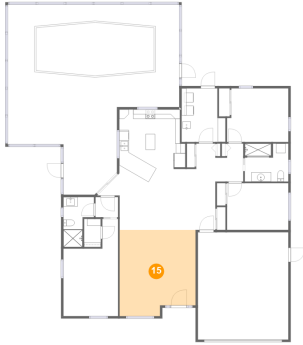
Dimensions: 24'10" x 11'2"  
Area: 251 sq. ft  
Counted as Living Area: No

Heated: No  
Finished: No  
Enclosed: No  
Contiguous: Yes  
Permitted: No  
Wet Space: No  
Addition: No  
Conversion: No



# 3180 Indra Road, South Venice, Venice, Sarasota County, Florida, United States, 34293

## 15 Floor 1 - Living Room



Dimensions: 16'0" x 18'2"  
Area: 273 sq. ft  
Counted as Living Area:  
Yes

Heated: Yes  
Finished: Yes  
Enclosed: Yes  
Contiguous:  
Yes  
Permitted: Yes  
Wet Space: No  
Addition: No  
Conversion: No

## 16 Floor 1 - W.i.c.



Dimensions: 3'6" x 5'11"  
Area: 21 sq. ft  
Counted as Living Area:  
Yes

Heated: Yes  
Finished: Yes  
Enclosed: Yes  
Contiguous:  
Yes  
Permitted: Yes  
Wet Space: No  
Addition: No  
Conversion: No