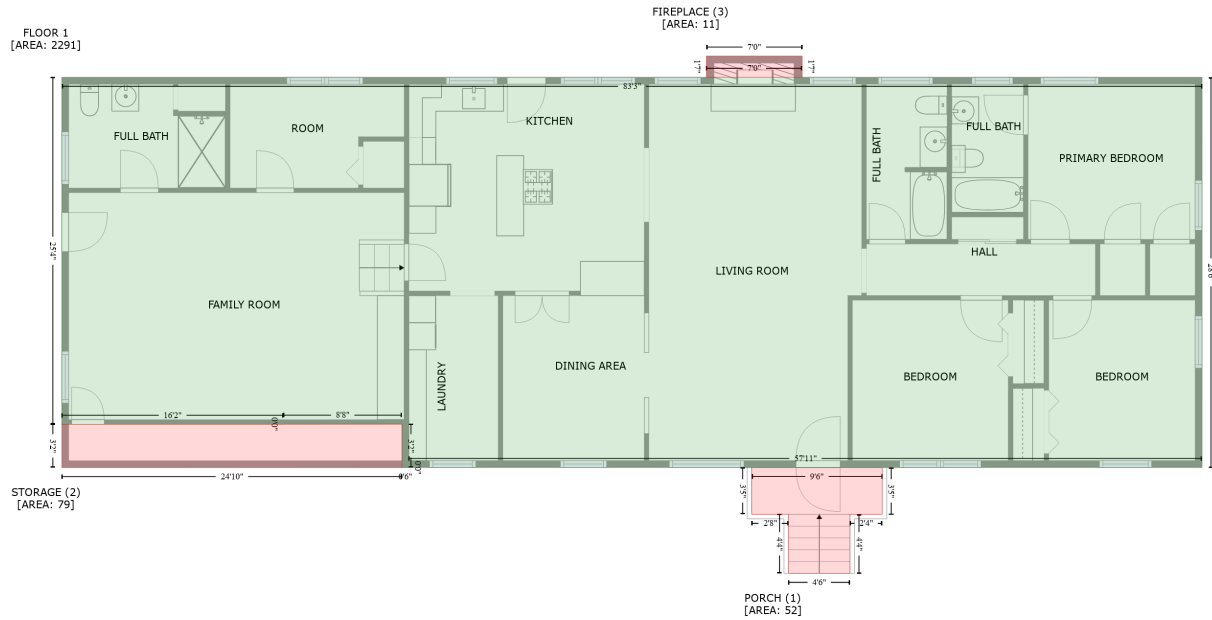


2111 Greenleaf Drive, Gastonia, Gaston County, North Carolina, United States, 28054

Gross Living Area: 2291 sq. ft



Space	Area (sq. ft)	Calculation
FLOOR 1 (Living area)	2291	Coordinate Polygon Area Algorithm using inches $-((998.1 + 998.1) * (20 - 361.5) + (998.1 + 303.1) * (361.5 - 361.5) + (303.1 + 303.1) * (361.5 - 361.6) + (303.1 + 297.1) * (361.6 - 361.6) + (297.1 + 297.1) * (361.6 - 323.6) + (297.1 + 193.3) * (323.6 - 323.6) + (193.3 + 193.3) * (323.6 - 323.7) + (193.3 + -0.9) * (323.7 - 323.7) + (-0.9 + -0.9) * (323.7 - 20) + (-0.9 + 998.1) * (20 - 20)) * 0.5 * 0.00694$
PORCH (Non-living area)	52	$-((717.9 + 717.9) * (361.5 - 402.5) + (717.9 + 689.7) * (402.5 - 402.5) + (689.7 + 689.7) * (402.5 - 454.2) + (689.7 + 635.8) * (454.2 - 454.2) + (635.8 + 635.8) * (454.2 - 402.5) + (635.8 + 603.5) * (402.5 - 402.5) + (603.5 + 603.5) * (402.5 - 361.5) + (603.5 + 717.9) * (361.5 - 361.5)) * 0.5 * 0.00694$
STORAGE (Non-living area)	79	$-((297.1 + 297.1) * (323.6 - 361.6) + (297.1 + -0.9) * (361.6 - 361.6) + (-0.9 + -0.9) * (361.6 - 323.7) + (-0.9 + 193.3) * (323.7 - 323.7) + (193.3 + 297.1) * (323.7 - 323.6)) * 0.5 * 0.00694$
FIREPLACE (Non-living area)	11	$-((647.8 + 647.8) * (1.4 - 20) + (647.8 + 563.9) * (20 - 20) + (563.9 + 563.9) * (20 - 1.4) + (563.9 + 647.8) * (1.4 - 1.4)) * 0.5 * 0.00694$