

Home report

2819 Woodlawn Avenue Southwest, Roanoke, Virginia 24015,  
United States



**Total Area: 1561 sq. ft**  
Below Ground: 201 sq. ft, Floor 2: 830 sq. ft, Floor 3: 530 sq. ft  
Excluded: Storage 134 sq. ft, Patio 226 sq. ft, Walls: 161 sq. ft

Property summary

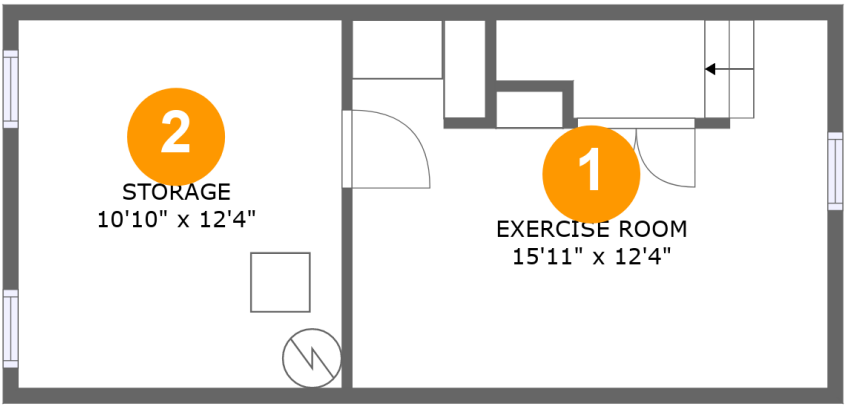
 **3** Floors

 **2** Bedrooms

 **1** Bathrooms

 **1** Half baths

2819 Woodlawn Avenue Southwest, Roanoke, Virginia 24015,  
United States



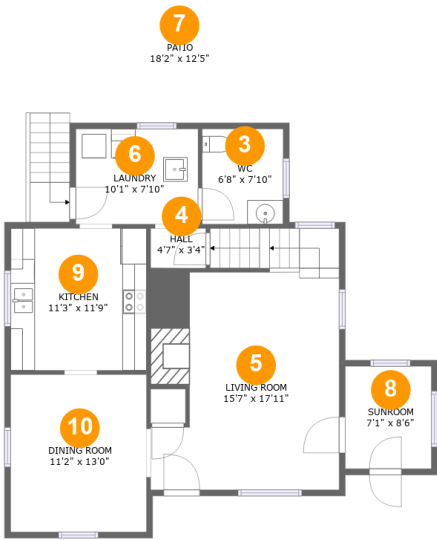
Room dimensions

Floor 1 Below ground Total:201sqft    Excluded: 134sqft

#		Max Dimensions	sqft	Included
1	Exercise Room	15'11" x 12'4"	192 sq. ft	Yes
2	Storage	10'10" x 12'4"	134 sq. ft	No

Home report

2819 Woodlawn Avenue Southwest, Roanoke, Virginia 24015, United States

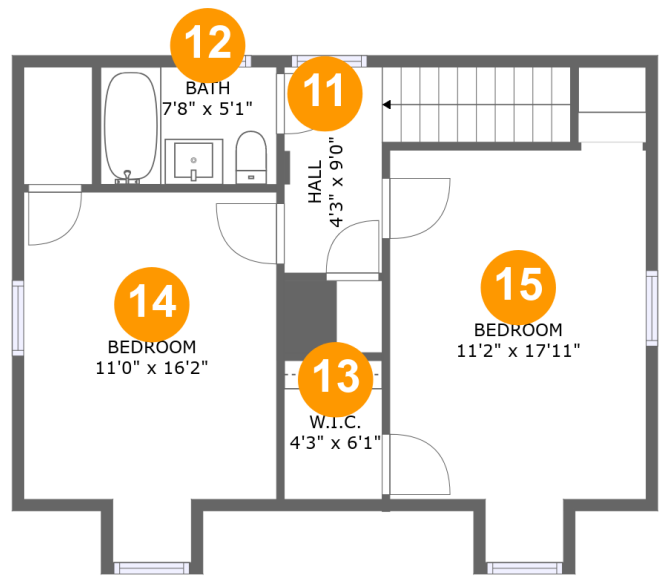


Room dimensions

Floor 2 Total:830sqft Excluded: 226sqft

#		Max Dimensions	sqft	Included
3	WC	6'8" x 7'10"	53 sq. ft	Yes
4	Hall	4'7" x 3'4"	15 sq. ft	Yes
5	Living Room	15'7" x 17'11"	306 sq. ft	Yes
6	Laundry	10'1" x 7'10"	79 sq. ft	Yes
7	Patio	18'2" x 12'5"	226 sq. ft	No
8	Sunroom	7'1" x 8'6"	60 sq. ft	Yes
9	Kitchen	11'3" x 11'9"	132 sq. ft	Yes
10	Dining Room	11'2" x 13'0"	146 sq. ft	Yes

2819 Woodlawn Avenue Southwest, Roanoke, Virginia 24015, United States



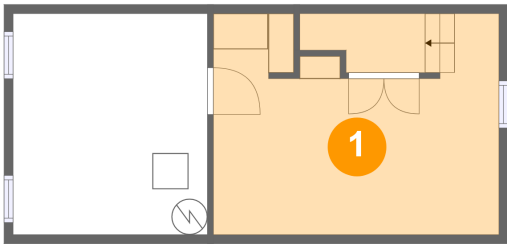
Room dimensions

Floor 3 Total:530sqft Excluded: 0sqft

#		Max Dimensions	sqft	Included
11	Hall	4'3" x 9'0"	65 sq. ft	Yes
12	Bath	7'8" x 5'1"	39 sq. ft	Yes
13	W.I.C.	4'3" x 6'1"	26 sq. ft	Yes
14	Bedroom	11'0" x 16'2"	157 sq. ft	Yes
15	Bedroom	11'2" x 17'11"	179 sq. ft	Yes

2819 Woodlawn Avenue Southwest, Roanoke, Virginia 24015,  
United States

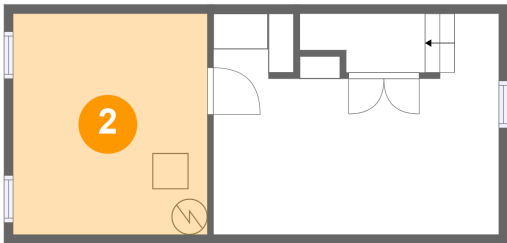
1 Floor 1 - Exercise Room



Max Dimensions: 15'11" x 12'4"  
Calculated Area: 192 sq. ft  
Included: No

Heated: Yes  
Finished: Yes  
Enclosed: Yes  
Contiguous: No  
Permitted: Yes  
Wet space: No  
Addition: No  
Conversion: No

2 Floor 1 - Storage



Max Dimensions: 10'10" x 12'4"  
Calculated Area: 134 sq. ft  
Included: No

Heated: No  
Finished: No  
Enclosed: No  
Contiguous: Yes  
Permitted: Yes  
Wet space: No  
Addition: No  
Conversion: No

2819 Woodlawn Avenue Southwest, Roanoke, Virginia 24015,  
United States

3 Floor 2 - WC



Max Dimensions: 6'8" x 7'10"  
Calculated Area: 53 sq. ft  
Included: Yes

Heated: Yes  
Finished: Yes  
Enclosed: Yes  
Contiguous: Yes  
Permitted: Yes  
Wet space: Yes  
Addition: No  
Conversion: No

4 Floor 2 - Hall



Max Dimensions: 4'7" x 3'4"  
Calculated Area: 15 sq. ft  
Included: Yes

Heated: Yes  
Finished: Yes  
Enclosed: Yes  
Contiguous: Yes  
Permitted: Yes  
Wet space: No  
Addition: No  
Conversion: No

5 Floor 2 - Living Room



Max Dimensions: 15'7" x 17'11"  
Calculated Area: 306 sq. ft  
Included: Yes

Heated: Yes  
Finished: Yes  
Enclosed: Yes  
Contiguous: Yes  
Permitted: Yes  
Wet space: No  
Addition: No  
Conversion: No

2819 Woodlawn Avenue Southwest, Roanoke, Virginia 24015, United States

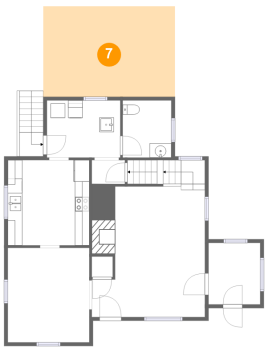
6 Floor 2 - Laundry



Max Dimensions: 10'1" x 7'10"  
Calculated Area: 79 sq. ft  
Included: Yes

Heated: Yes  
Finished: Yes  
Enclosed: Yes  
Contiguous: Yes  
Permitted: Yes  
Wet space: No  
Addition: No  
Conversion: No

7 Floor 2 - Patio



Max Dimensions: 18'2" x 12'5"  
Calculated Area: 226 sq. ft  
Included: No

Heated: No  
Finished: Yes  
Enclosed: No  
Contiguous: Yes  
Permitted: Yes  
Wet space: No  
Addition: No  
Conversion: No

8 Floor 2 - Sunroom

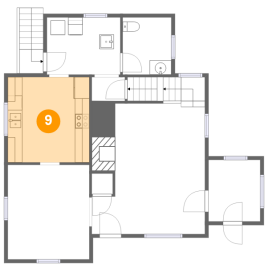


Max Dimensions: 7'1" x 8'6"  
Calculated Area: 60 sq. ft  
Included: Yes

Heated: Yes  
Finished: Yes  
Enclosed: Yes  
Contiguous: Yes  
Permitted: Yes  
Wet space: No  
Addition: No  
Conversion: No

2819 Woodlawn Avenue Southwest, Roanoke, Virginia 24015, United States

9 Floor 2 - Kitchen



Max Dimensions: 11'3" x 11'9"  
Calculated Area: 132 sq. ft  
Included: Yes

Heated: Yes  
Finished: Yes  
Enclosed: Yes  
Contiguous: Yes  
Permitted: Yes  
Wet space: No  
Addition: No  
Conversion: No

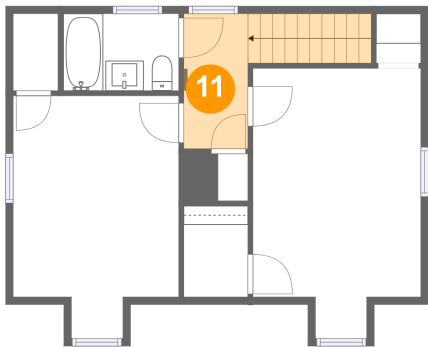
10 Floor 2 - Dining Room



Max Dimensions: 11'2" x 13'0"  
Calculated Area: 146 sq. ft  
Included: Yes

Heated: Yes  
Finished: Yes  
Enclosed: Yes  
Contiguous: Yes  
Permitted: Yes  
Wet space: No  
Addition: No  
Conversion: No

11 Floor 3 - Hall

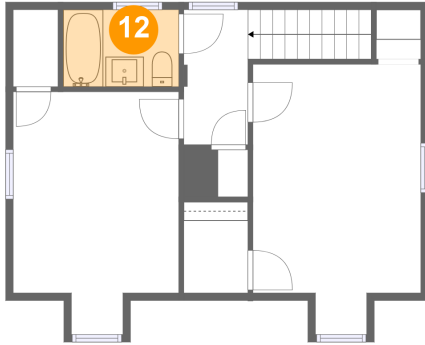


Max Dimensions: 4'3" x 9'0"  
Calculated Area: 65 sq. ft  
Included: Yes

Heated: Yes  
Finished: Yes  
Enclosed: Yes  
Contiguous: Yes  
Permitted: Yes  
Wet space: No  
Addition: No  
Conversion: No

2819 Woodlawn Avenue Southwest, Roanoke, Virginia 24015,  
United States

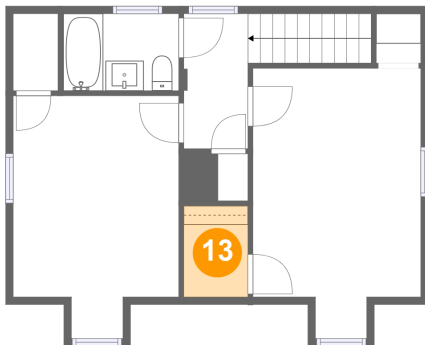
### 12 Floor 3 - Bath



Max Dimensions: 7'8" x 5'1"  
Calculated Area: 39 sq. ft  
Included: Yes

Heated: Yes  
Finished: Yes  
Enclosed: Yes  
Contiguous: Yes  
Permitted: Yes  
Wet space: Yes  
Addition: No  
Conversion: No

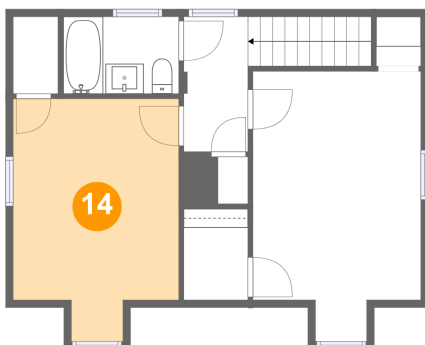
### 13 Floor 3 - W.I.C.



Max Dimensions: 4'3" x 6'1"  
Calculated Area: 26 sq. ft  
Included: Yes

Heated: Yes  
Finished: Yes  
Enclosed: Yes  
Contiguous: Yes  
Permitted: Yes  
Wet space: No  
Addition: No  
Conversion: No

### 14 Floor 3 - Bedroom

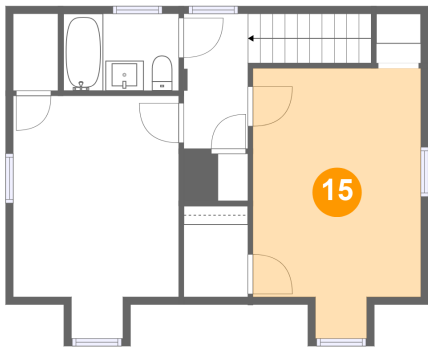


Max Dimensions: 11'0" x  
16'2"  
Calculated Area: 157 sq. ft  
Included: Yes

Heated: Yes  
Finished: Yes  
Enclosed: Yes  
Contiguous:  
Yes  
Permitted: Yes  
Wet space: No  
Addition: No  
Conversion: No

2819 Woodlawn Avenue Southwest, Roanoke, Virginia 24015,  
United States

**15** Floor 3 - Bedroom



Max Dimensions: 11'2" x 17'11"  
Calculated Area: 179 sq. ft  
Included: Yes

Heated: Yes  
Finished: Yes  
Enclosed: Yes  
Contiguous: Yes  
Permitted: Yes  
Wet space: No  
Addition: No  
Conversion: No