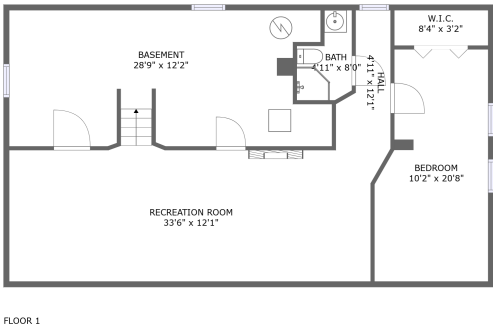
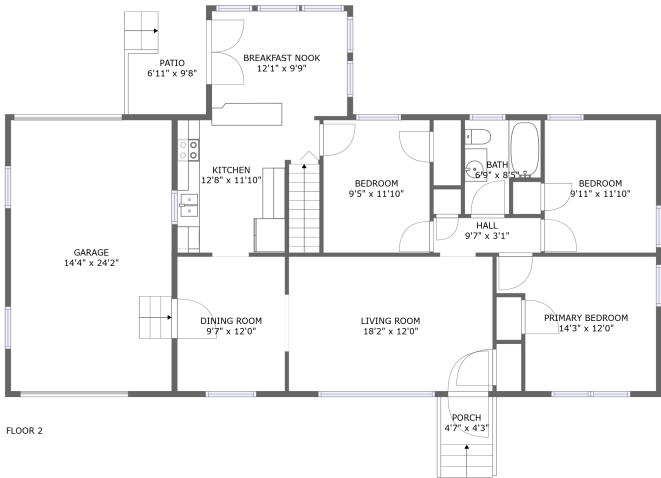


Home report

6539 Wendover Road, Brooklawn, Hollins, Roanoke, Roanoke County, Virginia, United States, 24019




Total GLA: 1227 sq. ft

Below Ground: 753 sq. ft, Floor 2: 1227 sq. ft

Excluded: Basement 346 sq. ft, Garage 374 sq. ft, Patio 56 sq. ft, Porch 20 sq. ft

Property summary

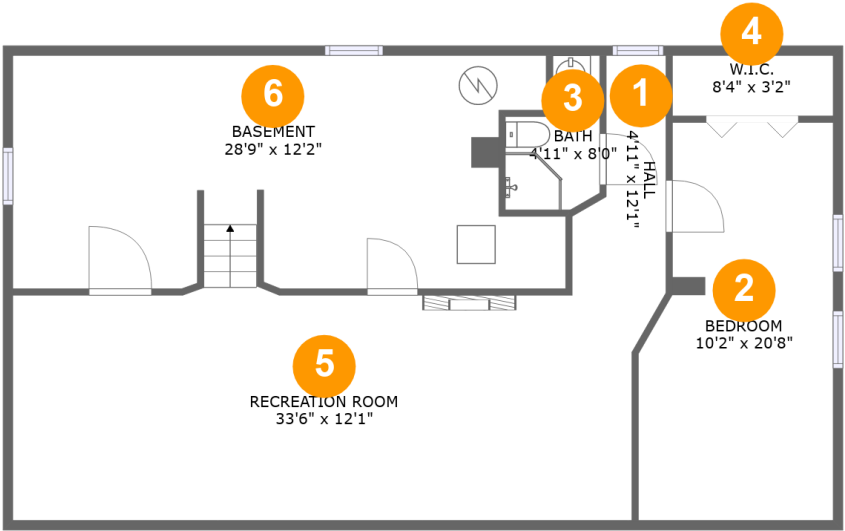
2 Floors

4 Bedrooms

2 Bathrooms

1 Garages

6539 Wendover Road, Brooklawn, Hollins, Roanoke, Roanoke County, Virginia, United States, 24019



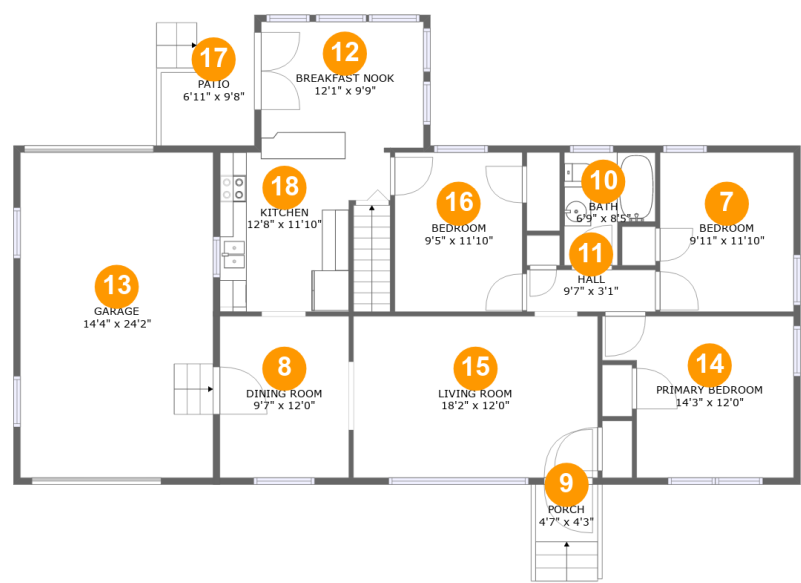
Room dimensions

Floor 1 Below ground Total:753sqft Excluded: 346sqft

#		Max Dimensions	sqft	Included
1	Hall	4'11" x 12'1"	45 sq. ft	Yes
2	Bedroom	10'2" x 20'8"	191 sq. ft	Yes
3	Bath	4'11" x 8'0"	31 sq. ft	Yes
4	W.I.C.	8'4" x 3'2"	26 sq. ft	Yes
5	Recreation Room	33'6" x 12'1"	383 sq. ft	Yes
6	Basement	28'9" x 12'2"	323 sq. ft	No

Home report

6539 Wendover Road, Brooklawn, Hollins, Roanoke, Roanoke County, Virginia, United States, 24019



Room dimensions

Floor 2

Total:1227sqft Excluded: 450sqft

#		Max Dimensions	sqft	Included
7	Bedroom	9'11" x 11'10"	118 sq. ft	Yes
8	Dining Room	9'7" x 12'0"	115 sq. ft	Yes
9	Porch	4'7" x 4'3"	20 sq. ft	No
10	Bath	6'9" x 8'5"	48 sq. ft	Yes
11	Hall	9'7" x 3'1"	30 sq. ft	Yes
12	Breakfast Nook	12'1" x 9'9"	116 sq. ft	Yes
13	Garage	14'4" x 24'2"	347 sq. ft	No
14	Primary Bedroom	14'3" x 12'0"	149 sq. ft	Yes
15	Living Room	18'2" x 12'0"	218 sq. ft	Yes
16	Bedroom	9'5" x 11'10"	112 sq. ft	Yes
17	Patio	6'11" x 9'8"	56 sq. ft	No

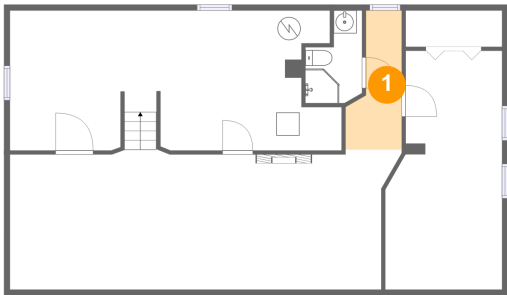
Home report

6539 Wendover Road, Brooklawn, Hollins, Roanoke, Roanoke County, Virginia, United States, 24019

#		Max Dimensions	sqft	Included
18	Kitchen	12'8" x 11'10"	125 sq. ft	Yes

6539 Wendover Road, Brooklawn, Hollins, Roanoke, Roanoke County, Virginia, United States, 24019

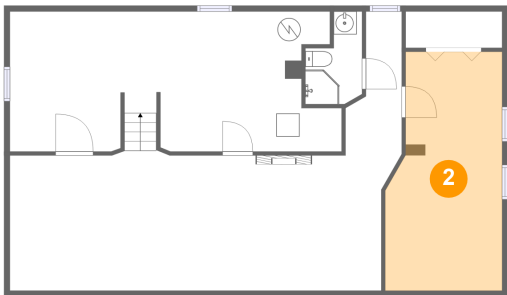
1 Floor 1 - Hall



Max Dimensions: 4'11" x 12'1"
Calculated Area: 45 sq. ft
Included: Yes

Heated: Yes
Finished: Yes
Enclosed: Yes
Contiguous: Yes
Permitted: Yes
Wet space: No
Addition: No
Conversion: No

2 Floor 1 - Bedroom

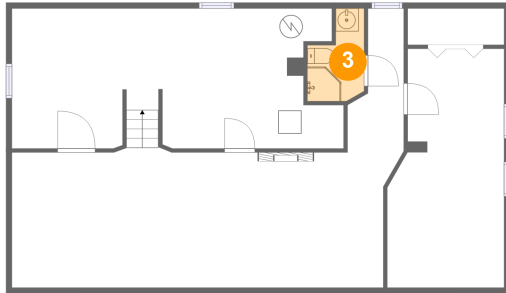


Max Dimensions: 10'2" x 20'8"
Calculated Area: 191 sq. ft
Included: Yes

Heated: Yes
Finished: Yes
Enclosed: Yes
Contiguous: Yes
Permitted: Yes
Wet space: No
Addition: No
Conversion: No

6539 Wendover Road, Brooklawn, Hollins, Roanoke, Roanoke County, Virginia, United States, 24019

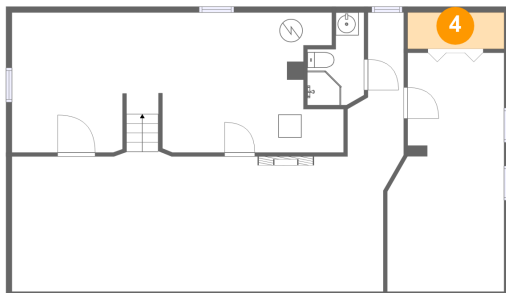
3 Floor 1 - Bath



Max Dimensions: 4'11" x 8'0"
Calculated Area: 31 sq. ft
Included: Yes

Heated: Yes
Finished: Yes
Enclosed: Yes
Contiguous: Yes
Permitted: Yes
Wet space: Yes
Addition: No
Conversion: No

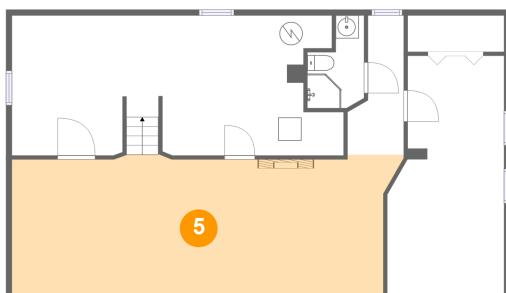
4 Floor 1 - W.I.C.



Max Dimensions: 8'4" x 3'2"
Calculated Area: 26 sq. ft
Included: Yes

Heated: Yes
Finished: Yes
Enclosed: Yes
Contiguous: Yes
Permitted: Yes
Wet space: No
Addition: No
Conversion: No

5 Floor 1 - Recreation Room

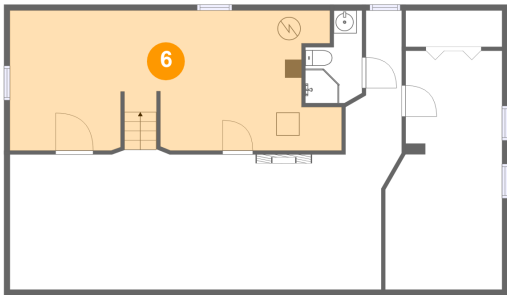


Max Dimensions: 33'6" x 12'1"
Calculated Area: 383 sq. ft
Included: Yes

Heated: Yes
Finished: Yes
Enclosed: Yes
Contiguous: Yes
Permitted: Yes
Wet space: No
Addition: No
Conversion: No

6539 Wendover Road, Brooklawn, Hollins, Roanoke, Roanoke County, Virginia, United States, 24019

6 Floor 1 - Basement



Max Dimensions: 28'9" x 12'2"
Calculated Area: 323 sq. ft
Included: No

Heated: Yes
Finished: No
Enclosed: Yes
Contiguous: Yes
Permitted: Yes
Wet space: No
Addition: No
Conversion: No

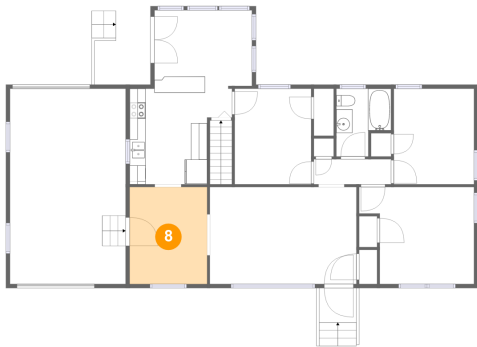
7 Floor 2 - Bedroom



Max Dimensions: 9'11" x 11'10"
Calculated Area: 118 sq. ft
Included: Yes

Heated: Yes
Finished: Yes
Enclosed: Yes
Contiguous: Yes
Permitted: Yes
Wet space: No
Addition: No
Conversion: No

8 Floor 2 - Dining Room

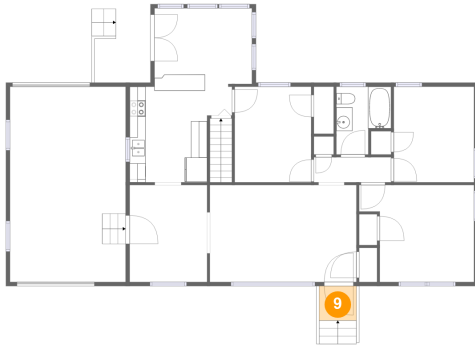


Max Dimensions: 9'7" x 12'0"
Calculated Area: 115 sq. ft
Included: Yes

Heated: Yes
Finished: Yes
Enclosed: Yes
Contiguous: Yes
Permitted: Yes
Wet space: No
Addition: No
Conversion: No

6539 Wendover Road, Brooklawn, Hollins, Roanoke, Roanoke County, Virginia, United States, 24019

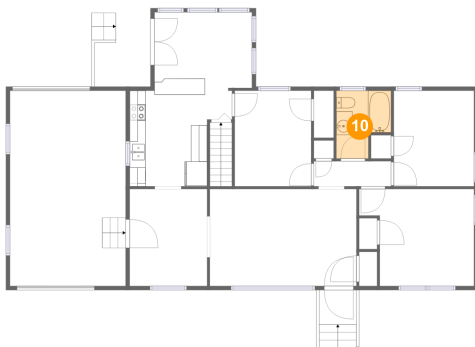
9 Floor 2 - Porch



Max Dimensions: 4'7" x 4'3"
Calculated Area: 20 sq. ft
Included: No

Heated: No
Finished: Yes
Enclosed: No
Contiguous: Yes
Permitted: Yes
Wet space: No
Addition: No
Conversion: No

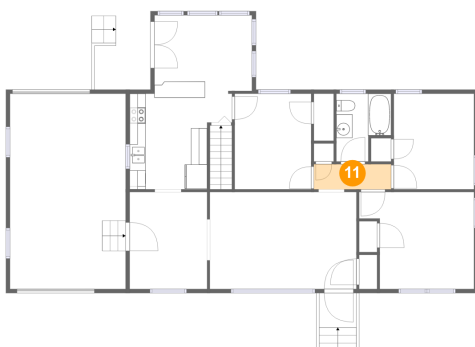
10 Floor 2 - Bath



Max Dimensions: 6'9" x 8'5"
Calculated Area: 48 sq. ft
Included: Yes

Heated: Yes
Finished: Yes
Enclosed: Yes
Contiguous: Yes
Permitted: Yes
Wet space: Yes
Addition: No
Conversion: No

11 Floor 2 - Hall



Max Dimensions: 9'7" x 3'1"
Calculated Area: 30 sq. ft
Included: Yes

Heated: Yes
Finished: Yes
Enclosed: Yes
Contiguous: Yes
Permitted: Yes
Wet space: No
Addition: No
Conversion: No

6539 Wendover Road, Brooklawn, Hollins, Roanoke, Roanoke County, Virginia, United States, 24019

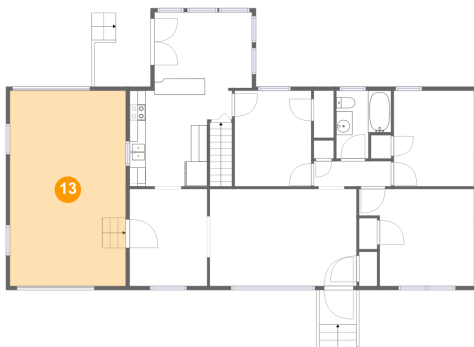
12 Floor 2 - Breakfast Nook



Max Dimensions: 12'1" x 9'9"
Calculated Area: 116 sq. ft
Included: Yes

Heated: Yes
Finished: Yes
Enclosed: Yes
Contiguous: Yes
Permitted: Yes
Wet space: No
Addition: No
Conversion: No

13 Floor 2 - Garage



Max Dimensions: 14'4" x 24'2"
Calculated Area: 347 sq. ft
Included: No

Heated: No
Finished: No
Enclosed: Yes
Contiguous: Yes
Permitted: Yes
Wet space: No
Addition: No
Conversion: No

14 Floor 2 - Primary Bedroom

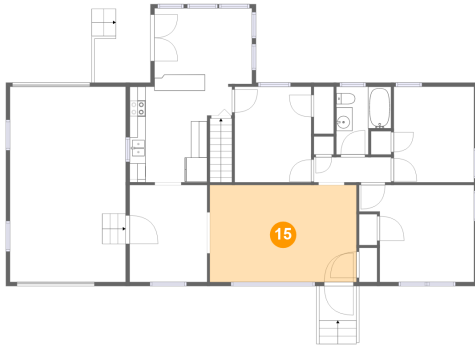


Max Dimensions: 14'3" x 12'0"
Calculated Area: 149 sq. ft
Included: Yes

Heated: Yes
Finished: Yes
Enclosed: Yes
Contiguous: Yes
Permitted: Yes
Wet space: No
Addition: No
Conversion: No

6539 Wendover Road, Brooklawn, Hollins, Roanoke, Roanoke County, Virginia, United States, 24019

15 Floor 2 - Living Room



Max Dimensions: 18'2" x 12'0"
Calculated Area: 218 sq. ft
Included: Yes

Heated: Yes
Finished: Yes
Enclosed: Yes
Contiguous: Yes
Permitted: Yes
Wet space: No
Addition: No
Conversion: No

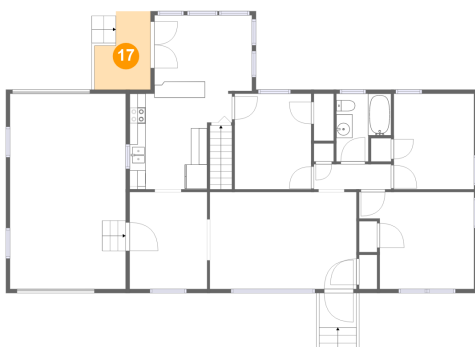
16 Floor 2 - Bedroom



Max Dimensions: 9'5" x 11'10"
Calculated Area: 112 sq. ft
Included: Yes

Heated: Yes
Finished: Yes
Enclosed: Yes
Contiguous: Yes
Permitted: Yes
Wet space: No
Addition: No
Conversion: No

17 Floor 2 - Patio



Max Dimensions: 6'11" x 9'8"
Calculated Area: 56 sq. ft
Included: No

Heated: No
Finished: Yes
Enclosed: No
Contiguous: Yes
Permitted: Yes
Wet space: No
Addition: No
Conversion: No

6539 Wendover Road, Brooklawn, Hollins, Roanoke, Roanoke County, Virginia, United States, 24019

18 Floor 2 - Kitchen



Max Dimensions: 12'8" x 11'10"
Calculated Area: 125 sq. ft
Included: Yes

Heated: Yes
Finished: Yes
Enclosed: Yes
Contiguous: Yes
Permitted: Yes
Wet space: No
Addition: No
Conversion: No