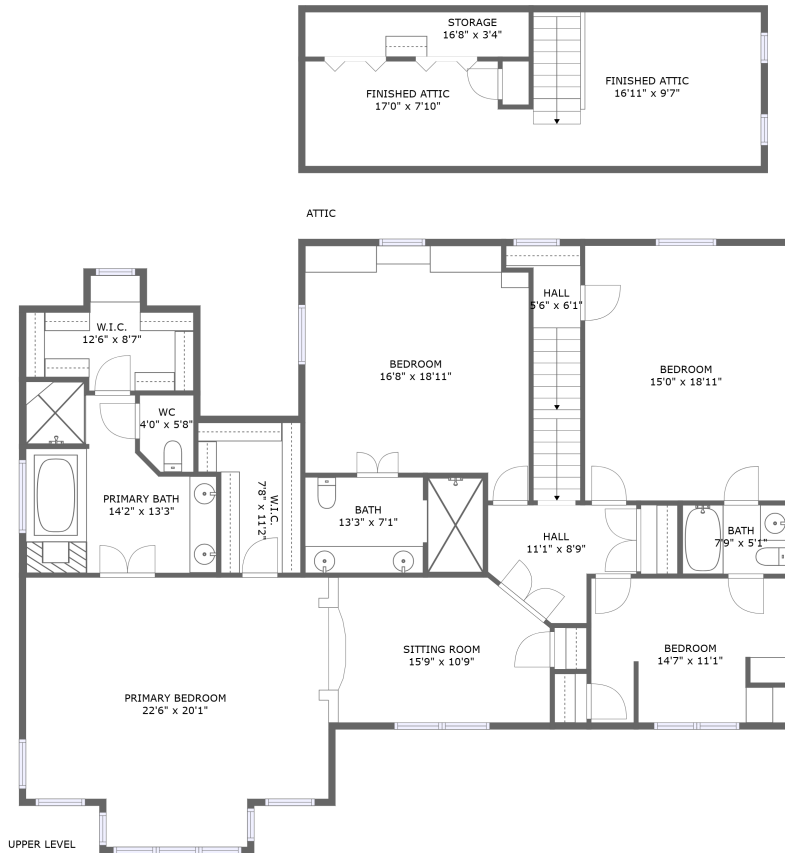


# 2702 Wycliffe Avenue Southwest, South Roanoke, Roanoke, Virginia, United

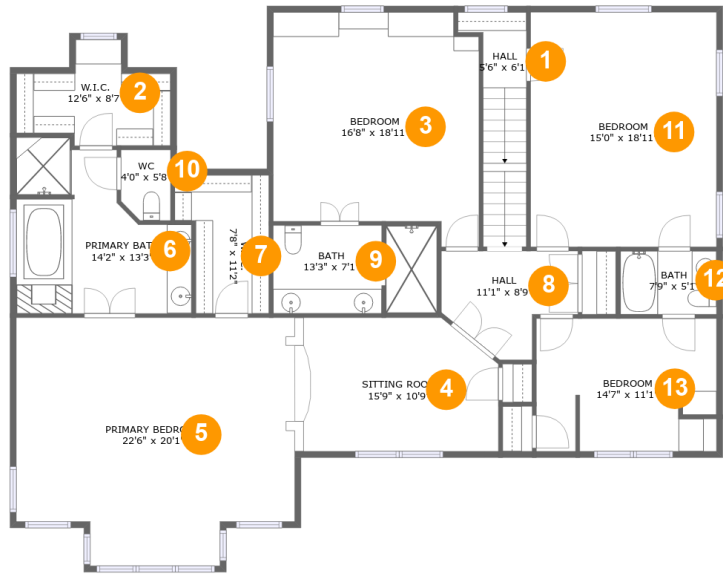


## Property Summary

**0** garages    **4** bedrooms    **3** bathrooms    **0** half baths

**2** floors    **1,908** Gross Living Area sqft    **2,558** total sqft

# 2702 Wycliffe Avenue Southwest, South Roanoke, Roanoke, Roanoke, Virginia, United



## Room Dimensions

Floor 1

Total sqft: 2124

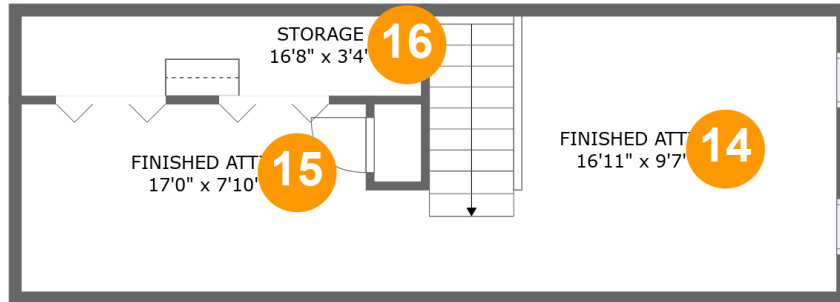
Living area: 1690

#	Room name	Dimensions	Area (sqft)	Counted as Living Area
1	Hall	5'6" x 6'1"	70 sq. ft	Yes
2	W.i.c.	12'6" x 8'7"	78 sq. ft	Yes
3	Bedroom	16'8" x 18'11"	283 sq. ft	Yes
4	Sitting Room	15'9" x 10'9"	169 sq. ft	Yes
5	Primary Bedroom	22'6" x 20'1"	408 sq. ft	No
6	Primary Bath	14'2" x 13'3"	155 sq. ft	Yes
7	W.i.c.	7'8" x 11'2"	73 sq. ft	Yes
8	Hall	11'1" x 8'9"	74 sq. ft	Yes
9	Bath	13'3" x 7'1"	93 sq. ft	Yes
10	Wc	4'0" x 5'8"	22 sq. ft	Yes
11	Bedroom	15'0" x 18'11"	285 sq. ft	Yes

**2702 Wycliffe Avenue Southwest, South  
Roanoke, Roanoke, Roanoke, Virginia, United**

#	Room name	Dimensions	Area (sqft)	Counted as Living Area
12	Bath	7'9" x 5'1"	40 sq. ft	Yes
13	Bedroom	14'7" x 11'1"	154 sq. ft	Yes

# 2702 Wycliffe Avenue Southwest, South Roanoke, Roanoke, Roanoke, Virginia, United



## Room Dimensions

Floor 2

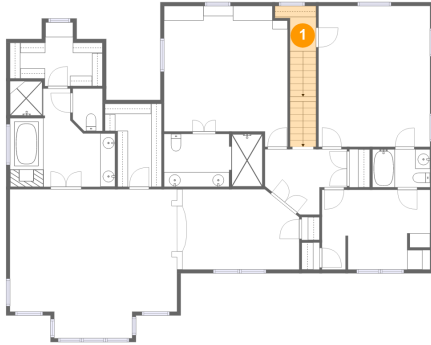
Total sqft: 434

Living area: 218

#	Room name	Dimensions	Area (sqft)	Counted as Living Area
14	Finished Attic	16'11" x 9'7"	118 sq. ft	Yes
15	Finished Attic	17'0" x 7'10"	79 sq. ft	Yes
16	Storage	16'8" x 3'4"	24 sq. ft	No

# 2702 Wycliffe Avenue Southwest, South Roanoke, Roanoke, Roanoke, Virginia, United

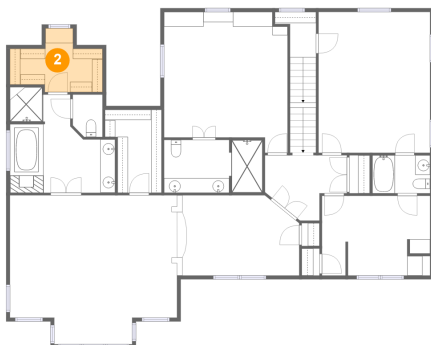
## 1 Floor 1 - Hall



Dimensions: 5'6" x 6'1"  
Area: 70 sq. ft  
Counted as Living Area:  
Yes

Heated: Yes  
Finished: Yes  
Enclosed: Yes  
Contiguous:  
Yes  
Permitted: Yes  
Wet Space: No  
Addition: No  
Conversion: No

## 2 Floor 1 - W.i.c.

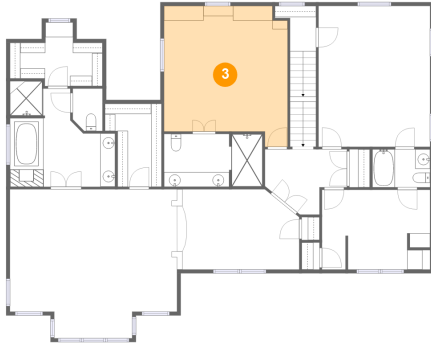


Dimensions: 12'6" x 8'7"  
Area: 78 sq. ft  
Counted as Living Area:  
Yes

Heated: Yes  
Finished: Yes  
Enclosed: Yes  
Contiguous:  
Yes  
Permitted: Yes  
Wet Space: No  
Addition: No  
Conversion: No

# 2702 Wycliffe Avenue Southwest, South Roanoke, Roanoke, Roanoke, Virginia, United

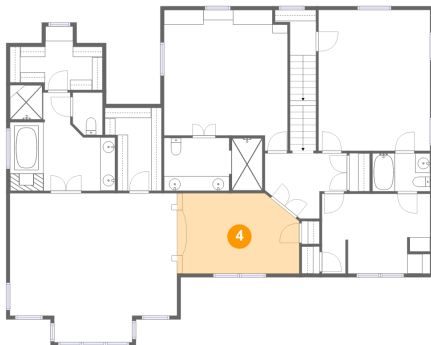
## 3 Floor 1 - Bedroom



Dimensions: 16'8" x 18'11"  
Area: 283 sq. ft  
Counted as Living Area:  
Yes

Heated: Yes  
Finished: Yes  
Enclosed: Yes  
Contiguous:  
Yes  
Permitted: Yes  
Wet Space: No  
Addition: No  
Conversion: No

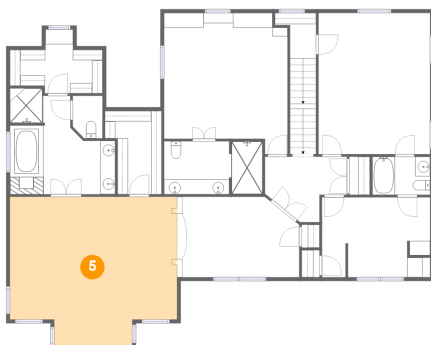
## 4 Floor 1 - Sitting Room



Dimensions: 15'9" x 10'9"  
Area: 169 sq. ft  
Counted as Living Area:  
Yes

Heated: Yes  
Finished: Yes  
Enclosed: Yes  
Contiguous:  
Yes  
Permitted: Yes  
Wet Space: No  
Addition: No  
Conversion: No

## 5 Floor 1 - Primary Bedroom

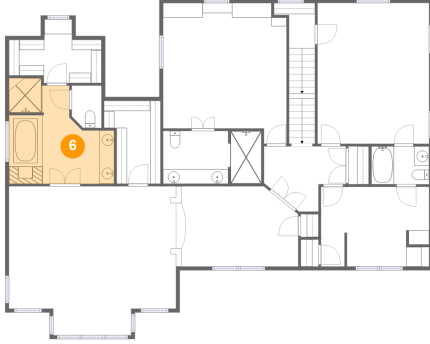


Dimensions: 22'6" x 20'1"  
Area: 408 sq. ft  
Counted as Living Area: No

Heated: Yes  
Finished: Yes  
Enclosed: Yes  
Contiguous: Yes  
Permitted: Yes  
Wet Space: No  
Addition: No  
Conversion: No

# 2702 Wycliffe Avenue Southwest, South Roanoke, Roanoke, Roanoke, Virginia, United

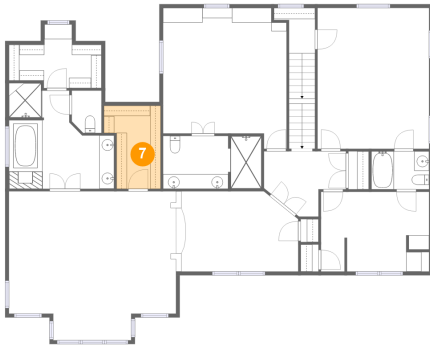
## 6 Floor 1 - Primary Bath



Dimensions: 14'2" x 13'3"  
Area: 155 sq. ft  
Counted as Living Area:  
Yes

Heated: Yes  
Finished: Yes  
Enclosed: Yes  
Contiguous:  
Yes  
Permitted: Yes  
Wet Space: Yes  
Addition: No  
Conversion: No

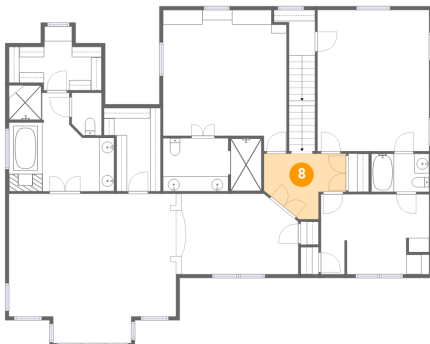
## 7 Floor 1 - W.i.c.



Dimensions: 7'8" x 11'2"  
Area: 73 sq. ft  
Counted as Living Area:  
Yes

Heated: Yes  
Finished: Yes  
Enclosed: Yes  
Contiguous:  
Yes  
Permitted: Yes  
Wet Space: No  
Addition: No  
Conversion: No

## 8 Floor 1 - Hall

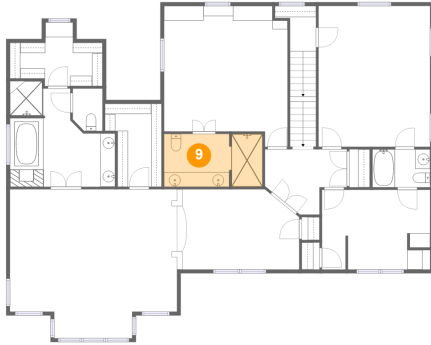


Dimensions: 11'1" x 8'9"  
Area: 74 sq. ft  
Counted as Living Area:  
Yes

Heated: Yes  
Finished: Yes  
Enclosed: Yes  
Contiguous:  
Yes  
Permitted: Yes  
Wet Space: No  
Addition: No  
Conversion: No

# 2702 Wycliffe Avenue Southwest, South Roanoke, Roanoke, Roanoke, Virginia, United

## 9 Floor 1 - Bath



Dimensions: 13'3" x 7'1"  
Area: 93 sq. ft  
Counted as Living Area:  
Yes

Heated: Yes  
Finished: Yes  
Enclosed: Yes  
Contiguous:  
Yes  
Permitted: Yes  
Wet Space: Yes  
Addition: No  
Conversion: No

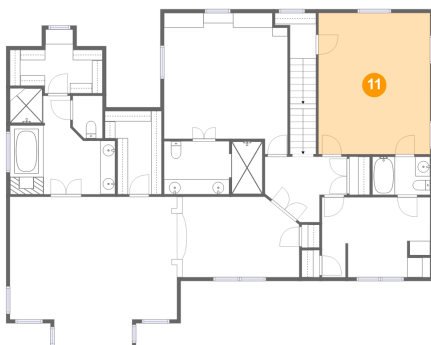
## 10 Floor 1 - Wc



Dimensions: 4'0" x 5'8"  
Area: 22 sq. ft  
Counted as Living Area:  
Yes

Heated: Yes  
Finished: Yes  
Enclosed: Yes  
Contiguous:  
Yes  
Permitted: Yes  
Wet Space: Yes  
Addition: No  
Conversion: No

## 11 Floor 1 - Bedroom



Dimensions: 15'0" x 18'11"  
Area: 285 sq. ft  
Counted as Living Area:  
Yes

Heated: Yes  
Finished: Yes  
Enclosed: Yes  
Contiguous:  
Yes  
Permitted: Yes  
Wet Space: No  
Addition: No  
Conversion: No



# 2702 Wycliffe Avenue Southwest, South Roanoke, Roanoke, Roanoke, Virginia, United

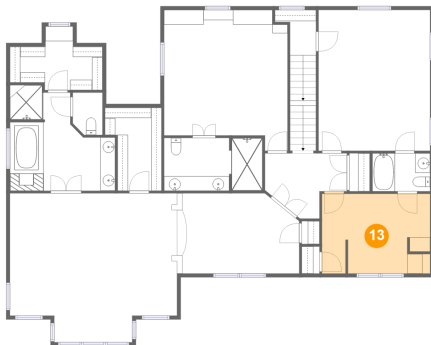
## 12 Floor 1 - Bath



Dimensions: 7'9" x 5'1"  
Area: 40 sq. ft  
Counted as Living Area:  
Yes

Heated: Yes  
Finished: Yes  
Enclosed: Yes  
Contiguous:  
Yes  
Permitted: Yes  
Wet Space: Yes  
Addition: No  
Conversion: No

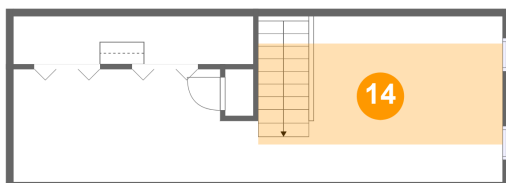
## 13 Floor 1 - Bedroom



Dimensions: 14'7" x 11'1"  
Area: 154 sq. ft  
Counted as Living Area:  
Yes

Heated: Yes  
Finished: Yes  
Enclosed: Yes  
Contiguous:  
Yes  
Permitted: Yes  
Wet Space: No  
Addition: No  
Conversion: No

## 14 Floor 2 - Finished Attic

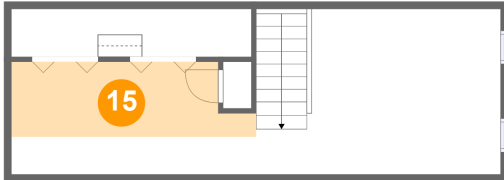


Dimensions: 16'11" x 9'7"  
Area: 118 sq. ft  
Counted as Living Area:  
Yes

Heated: Yes  
Finished: Yes  
Enclosed: Yes  
Contiguous:  
Yes  
Permitted: Yes  
Wet Space: No  
Addition: No  
Conversion: No

# 2702 Wycliffe Avenue Southwest, South Roanoke, Roanoke, Roanoke, Virginia, United

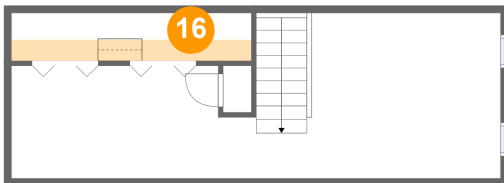
## 15 Floor 2 - Finished Attic



Dimensions: 17'0" x 7'10"  
Area: 79 sq. ft  
Counted as Living Area:  
Yes

Heated: Yes  
Finished: Yes  
Enclosed: Yes  
Contiguous:  
Yes  
Permitted: Yes  
Wet Space: No  
Addition: No  
Conversion: No

## 16 Floor 2 - Storage



Dimensions: 16'8" x 3'4"  
Area: 24 sq. ft  
Counted as Living Area: No

Heated: No  
Finished: No  
Enclosed: No  
Contiguous: Yes  
Permitted: Yes  
Wet Space: No  
Addition: No  
Conversion: No