



Home report


22031 Broadway Avenue, Clarksburg, Montgomery County,
Maryland, United States, 20871




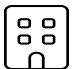
Property summary


 **1** Garages


 **3** Bedrooms

 **2** Bathrooms

 **1** Half baths

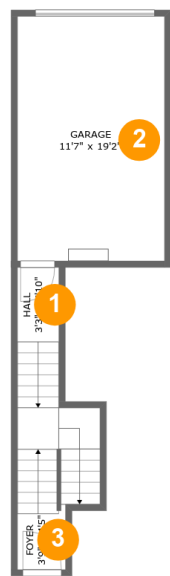
 **3** Floors

 **2,298** Gross living area sqft

 **2,745** Total sqft

Home report

22031 Broadway Avenue, Clarksburg, Montgomery County,
Maryland, United States, 20871



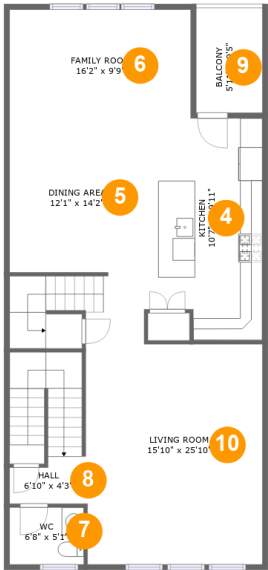
Room dimensions

Floor 1 Total sqft: 371 Living area: 0

#		Dimensions	sqft	Counted as living area
1	Hall	3'3" x 5'10"	36 sq. ft	No
2	Garage	11'7" x 19'2"	222 sq. ft	No
3	Foyer	3'9" x 4'5"	68 sq. ft	No

Home report

22031 Broadway Avenue, Clarksburg, Montgomery County,
Maryland, United States, 20871



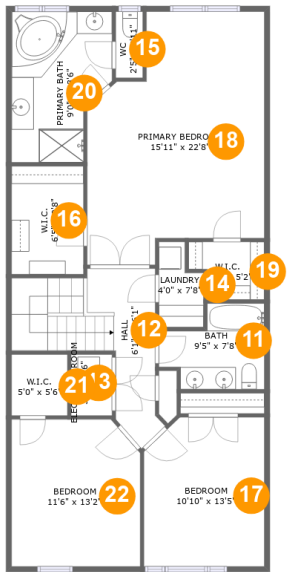
Room dimensions

Floor 2 Total sqft: 1186 Living area: 1130

#		Dimensions	sqft	Counted as living area
4	Kitchen	10'7" x 19'11"	199 sq. ft	Yes
5	Dining Area	12'1" x 14'2"	168 sq. ft	Yes
6	Family Room	16'2" x 9'9"	158 sq. ft	Yes
7	WC	6'8" x 5'1"	34 sq. ft	Yes
8	Hall	6'10" x 4'3"	78 sq. ft	Yes
9	Balcony	5'11" x 9'5"	56 sq. ft	No
10	Living Room	15'10" x 25'10"	376 sq. ft	Yes

Home report

22031 Broadway Avenue, Clarksburg, Montgomery County,
Maryland, United States, 20871



Room dimensions

Floor 3 Total sqft: 1188 Living area: 1168

#		Dimensions	sqft	Counted as living area
11	Bath	9'5" x 7'8"	58 sq. ft	Yes
12	Hall	6'1" x 16'1"	117 sq. ft	Yes
13	Electrical Room	3'8" x 5'6"	20 sq. ft	No
14	Laundry	4'0" x 7'8"	26 sq. ft	Yes
15	WC	2'5" x 5'11"	14 sq. ft	Yes
16	W.I.C.	6'5" x 9'8"	63 sq. ft	Yes
17	Bedroom	10'10" x 13'5"	140 sq. ft	Yes
18	Primary Bedroom	15'11" x 22'8"	301 sq. ft	Yes
19	W.I.C.	6'10" x 5'2"	31 sq. ft	Yes
20	Primary Bath	9'0" x 13'6"	106 sq. ft	Yes
21	W.I.C.	5'0" x 5'6"	27 sq. ft	Yes

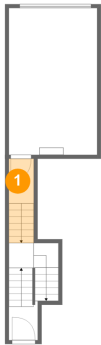
Home report

22031 Broadway Avenue, Clarksburg, Montgomery County,
Maryland, United States, 20871

#		Dimensions	sqft	Counted as living area
22	Bedroom	11'6" x 13'2"	148 sq. ft	Yes

22031 Broadway Avenue, Clarksburg, Montgomery County,
Maryland, United States, 20871

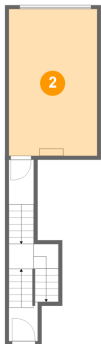
1 Floor 1 - Hall



Dimensions: 3'3" x 5'10"
Area: 36 sq. ft
Counted as living area: No

Heated: Yes
Finished: Yes
Enclosed: Yes
Contiguous: No
Permitted: Yes
Wet space: No
Addition: No
Conversion: No

2 Floor 1 - Garage



Dimensions: 11'7" x 19'2"
Area: 222 sq. ft
Counted as living area: No

Heated: No
Finished: No
Enclosed: Yes
Contiguous: Yes
Permitted: Yes
Wet space: No
Addition: No
Conversion: No

Home report

22031 Broadway Avenue, Clarksburg, Montgomery County,
Maryland, United States, 20871

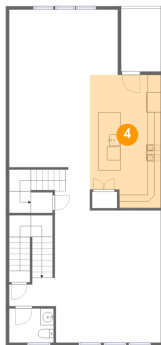
3 Floor 1 - Foyer



Dimensions: 3'9" x 4'5"
Area: 68 sq. ft
Counted as living area: No

Heated: Yes
Finished: Yes
Enclosed: Yes
Contiguous: No
Permitted: Yes
Wet space: No
Addition: No
Conversion: No

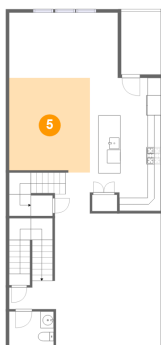
4 Floor 2 - Kitchen



Dimensions: 10'7" x 19'11"
Area: 199 sq. ft
Counted as living area: Yes

Heated: Yes
Finished: Yes
Enclosed: Yes
Contiguous: Yes
Permitted: Yes
Wet space: No
Addition: No
Conversion: No

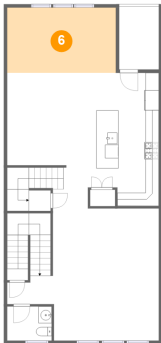
5 Floor 2 - Dining Area



Dimensions: 12'1" x 14'2"
Area: 168 sq. ft
Counted as living area: Yes

Heated: Yes
Finished: Yes
Enclosed: Yes
Contiguous: Yes
Permitted: Yes
Wet space: No
Addition: No
Conversion: No

6 Floor 2 - Family Room



Dimensions: 16'2" x 9'9"
Area: 158 sq. ft
Counted as living area: Yes

Heated: Yes
Finished: Yes
Enclosed: Yes
Contiguous: Yes
Permitted: Yes
Wet space: No
Addition: No
Conversion: No

7 Floor 2 - WC



Dimensions: 6'8" x 5'1"
Area: 34 sq. ft
Counted as living area: Yes

Heated: Yes
Finished: Yes
Enclosed: Yes
Contiguous: Yes
Permitted: Yes
Wet space: Yes
Addition: No
Conversion: No

8 Floor 2 - Hall



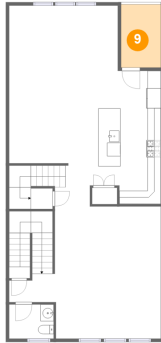
Dimensions: 6'10" x 4'3"
Area: 78 sq. ft
Counted as living area: Yes

Heated: Yes
Finished: Yes
Enclosed: Yes
Contiguous: Yes
Permitted: Yes
Wet space: No
Addition: No
Conversion: No

Home report

22031 Broadway Avenue, Clarksburg, Montgomery County,
Maryland, United States, 20871

9 Floor 2 - Balcony



Dimensions: 5'11" x 9'5"
Area: 56 sq. ft
Counted as living area: No

Heated: No
Finished: Yes
Enclosed: No
Contiguous: Yes
Permitted: Yes
Wet space: No
Addition: No
Conversion: No

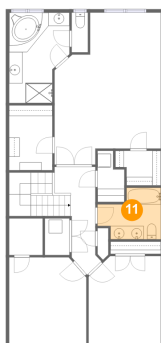
10 Floor 2 - Living Room



Dimensions: 15'10" x 25'10"
Area: 376 sq. ft
Counted as living area: Yes

Heated: Yes
Finished: Yes
Enclosed: Yes
Contiguous: Yes
Permitted: Yes
Wet space: No
Addition: No
Conversion: No

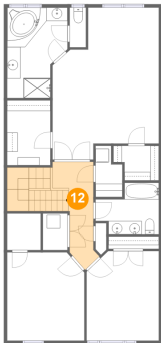
11 Floor 3 - Bath



Dimensions: 9'5" x 7'8"
Area: 58 sq. ft
Counted as living area: Yes

Heated: Yes
Finished: Yes
Enclosed: Yes
Contiguous: Yes
Permitted: Yes
Wet space: Yes
Addition: No
Conversion: No

12 Floor 3 - Hall



Dimensions: 6'1" x 16'1"
Area: 117 sq. ft
Counted as living area: Yes

Heated: Yes
Finished: Yes
Enclosed: Yes
Contiguous: Yes
Permitted: Yes
Wet space: No
Addition: No
Conversion: No

13 Floor 3 - Electrical Room



Dimensions: 3'8" x 5'6"
Area: 20 sq. ft
Counted as living area: No

Heated: No
Finished: No
Enclosed: Yes
Contiguous: Yes
Permitted: Yes
Wet space: No
Addition: No
Conversion: No

14 Floor 3 - Laundry



Dimensions: 4'0" x 7'8"
Area: 26 sq. ft
Counted as living area: Yes

Heated: Yes
Finished: Yes
Enclosed: Yes
Contiguous: Yes
Permitted: Yes
Wet space: No
Addition: No
Conversion: No

22031 Broadway Avenue, Clarksburg, Montgomery County,
Maryland, United States, 20871

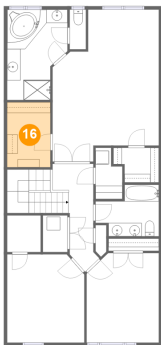
15 Floor 3 - WC



Dimensions: 2'5" x 5'11"
Area: 14 sq. ft
Counted as living area: Yes

Heated: Yes
Finished: Yes
Enclosed: Yes
Contiguous: Yes
Permitted: Yes
Wet space: Yes
Addition: No
Conversion: No

16 Floor 3 - W.I.C.



Dimensions: 6'5" x 9'8"
Area: 63 sq. ft
Counted as living area: Yes

Heated: Yes
Finished: Yes
Enclosed: Yes
Contiguous: Yes
Permitted: Yes
Wet space: No
Addition: No
Conversion: No

17 Floor 3 - Bedroom



Dimensions: 10'10" x 13'5"
Area: 140 sq. ft
Counted as living area: Yes

Heated: Yes
Finished: Yes
Enclosed: Yes
Contiguous: Yes
Permitted: Yes
Wet space: No
Addition: No
Conversion: No

22031 Broadway Avenue, Clarksburg, Montgomery County,
Maryland, United States, 20871

18 Floor 3 - Primary Bedroom



Dimensions: 15'11" x 22'8"
Area: 301 sq. ft
Counted as living area: Yes

Heated: Yes
Finished: Yes
Enclosed: Yes
Contiguous: Yes
Permitted: Yes
Wet space: No
Addition: No
Conversion: No

19 Floor 3 - W.I.C.



Dimensions: 6'10" x 5'2"
Area: 31 sq. ft
Counted as living area: Yes

Heated: Yes
Finished: Yes
Enclosed: Yes
Contiguous: Yes
Permitted: Yes
Wet space: No
Addition: No
Conversion: No

20 Floor 3 - Primary Bath



Dimensions: 9'0" x 13'6"
Area: 106 sq. ft
Counted as living area: Yes

Heated: Yes
Finished: Yes
Enclosed: Yes
Contiguous: Yes
Permitted: Yes
Wet space: Yes
Addition: No
Conversion: No

22031 Broadway Avenue, Clarksburg, Montgomery County,
Maryland, United States, 20871

21 Floor 3 - W.I.C.



Dimensions: 5'0" x 5'6"
Area: 27 sq. ft
Counted as living area: Yes

Heated: Yes
Finished: Yes
Enclosed: Yes
Contiguous: Yes
Permitted: Yes
Wet space: No
Addition: No
Conversion: No

22 Floor 3 - Bedroom



Dimensions: 11'6" x 13'2"
Area: 148 sq. ft
Counted as living area: Yes

Heated: Yes
Finished: Yes
Enclosed: Yes
Contiguous: Yes
Permitted: Yes
Wet space: No
Addition: No
Conversion: No