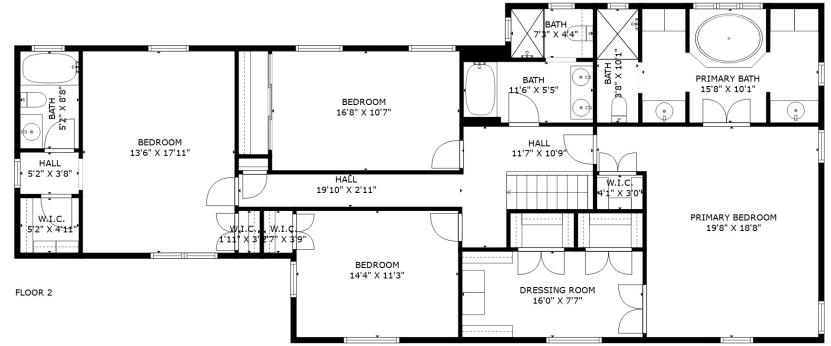
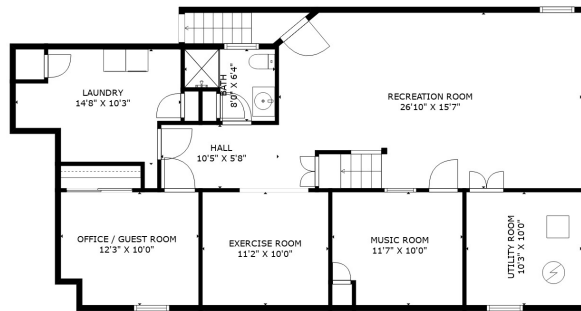


FLOOR 1



FLOOR 2



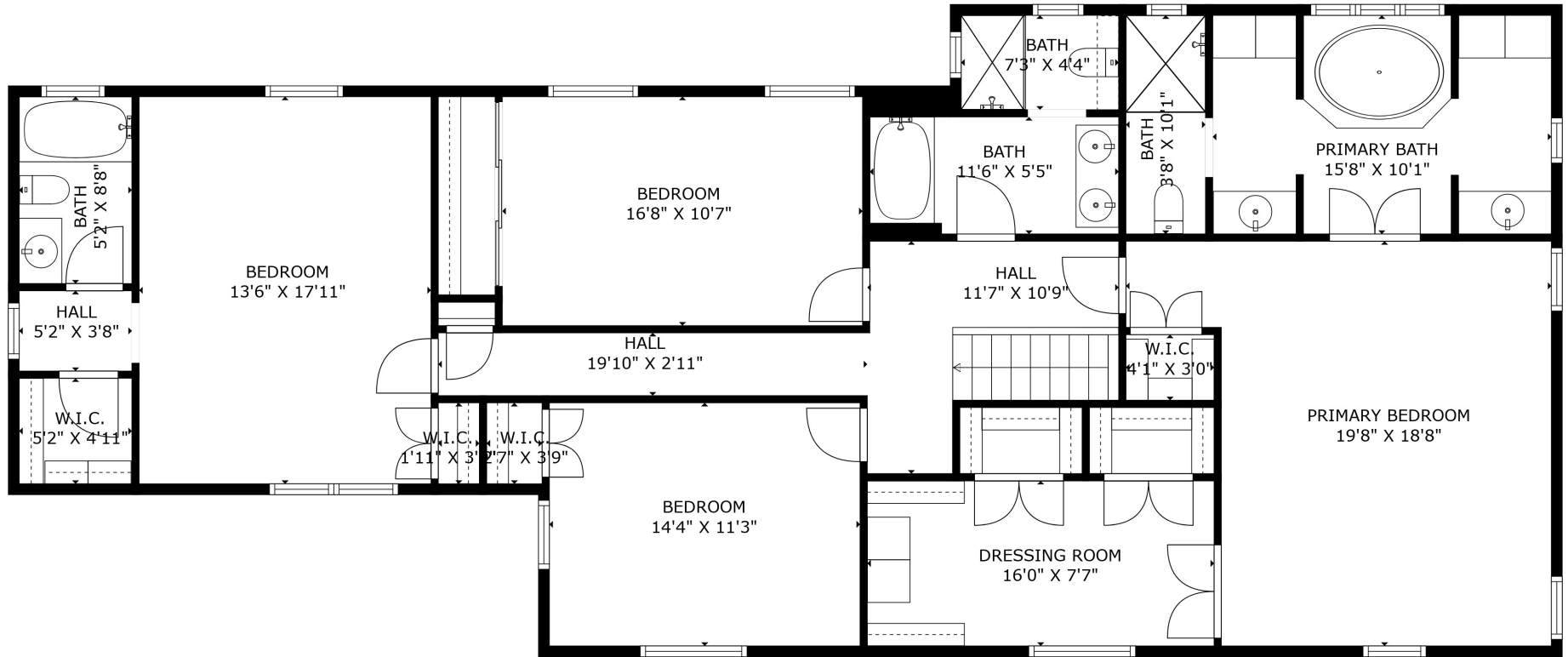
BASEMENT

TOTAL: 4899 sq. ft

Below Ground: 1077 sq. ft, FLOOR 1: 2109 sq. ft, FLOOR 2: 1713 sq. ft

EXCLUDED AREAS: UTILITY ROOM: 103 sq. ft, GARAGE: 376 sq. ft, PATIO: 647 sq. ft,

PORCH: 51 sq. ft

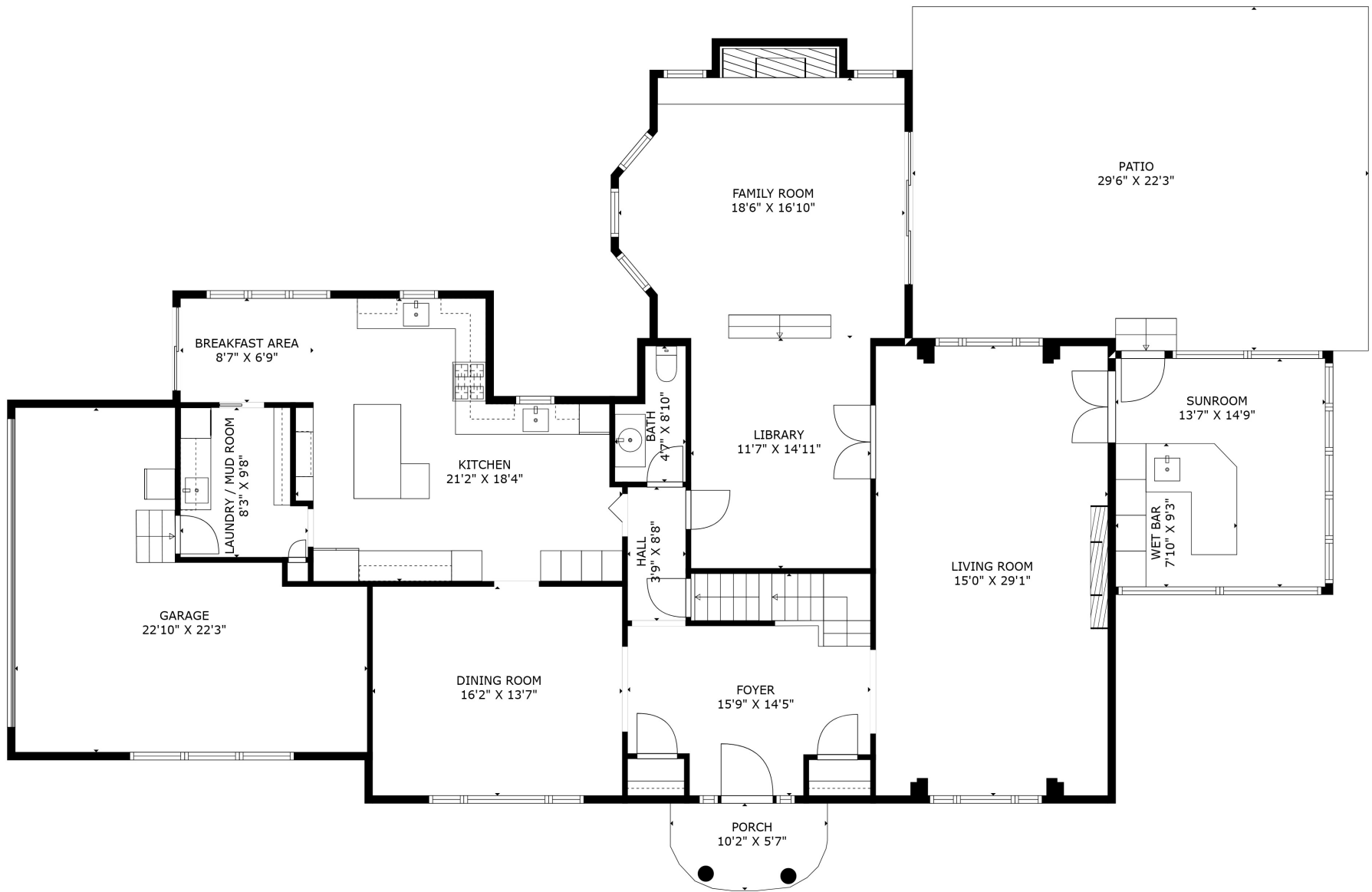


TOTAL: 4898 sq. ft

Below Ground: 1077 sq. ft, FLOOR 1: 2108 sq. ft, FLOOR 2: 1713 sq. ft

EXCLUDED AREAS: UTILITY ROOM: 103 sq. ft, GARAGE: 376 sq. ft, PATIO: 647 sq. ft,
 PORCH: 51 sq. ft

In House Photography | Measurements Are Deemed Highly Reliable But Not Guaranteed

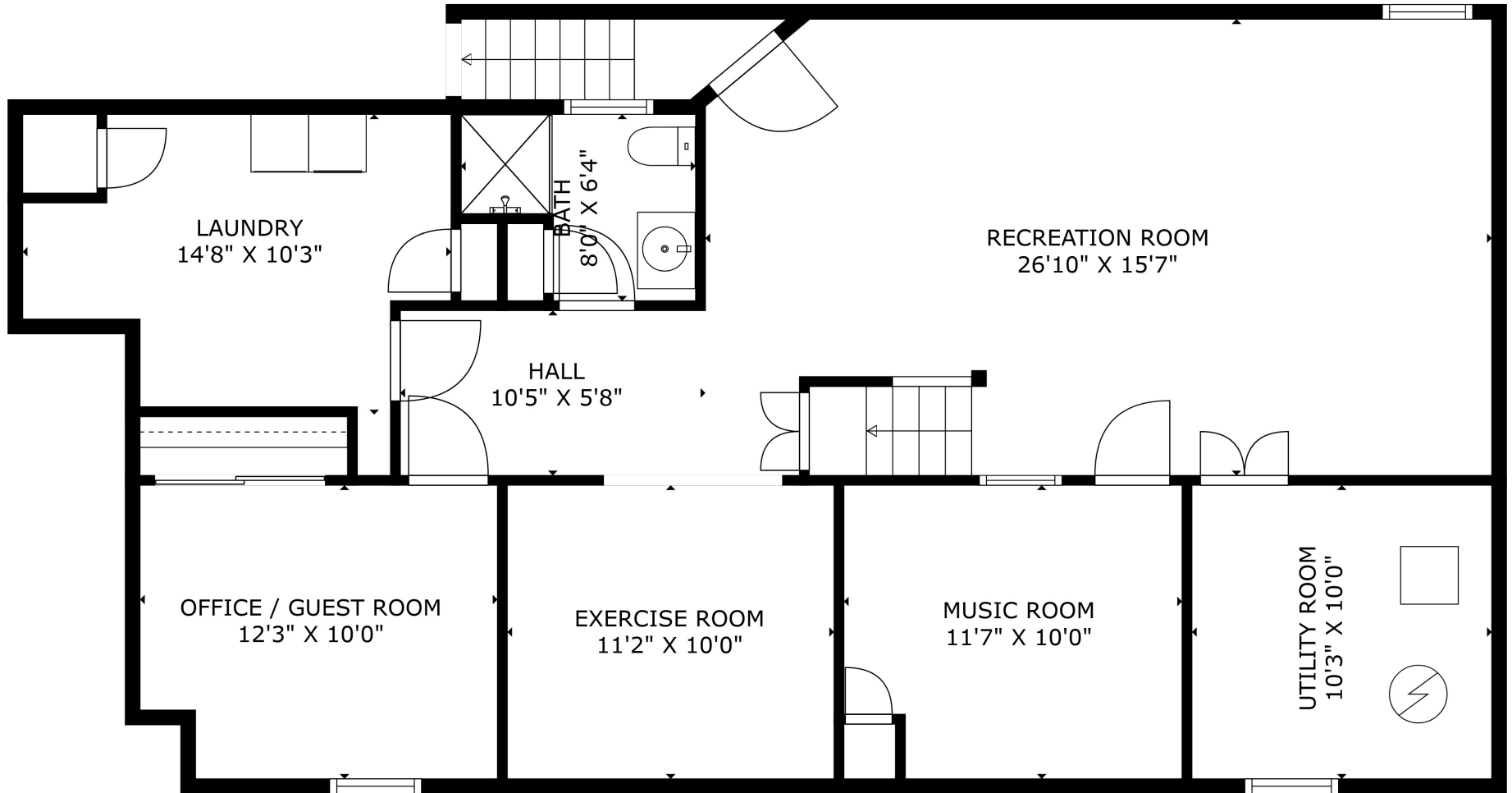


TOTAL: 4898 sq. ft

Below Ground: 1077 sq. ft, FLOOR 1: 2108 sq. ft, FLOOR 2: 1713 sq. ft

EXCLUDED AREAS: UTILITY ROOM: 103 sq. ft, GARAGE: 376 sq. ft, PATIO: 647 sq. ft,
 PORCH: 51 sq. ft

In House Photography | Measurements Are Deemed Highly Reliable But Not Guaranteed



TOTAL: 4898 sq. ft

Below Ground: 1077 sq. ft, FLOOR 1: 2108 sq. ft, FLOOR 2: 1713 sq. ft

EXCLUDED AREAS: UTILITY ROOM: 103 sq. ft, GARAGE: 376 sq. ft, PATIO: 647 sq. ft,
 PORCH: 51 sq. ft

In House Photography | Measurements Are Deemed Highly Reliable But Not Guaranteed