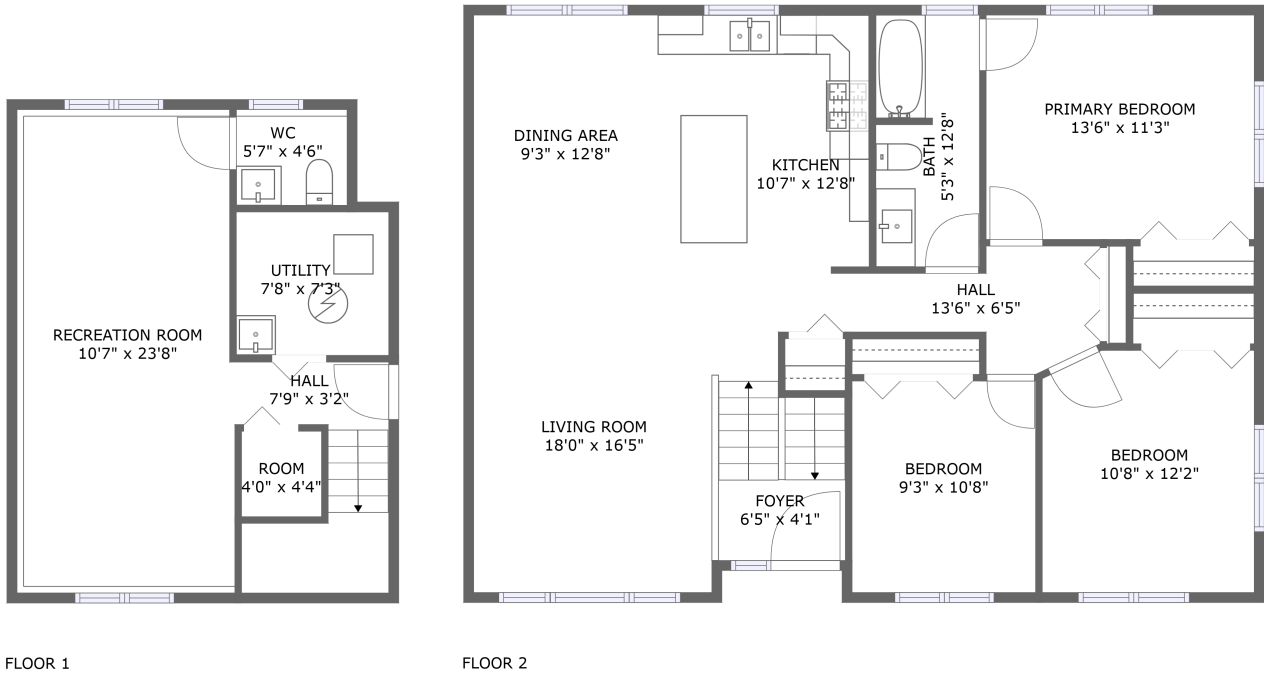
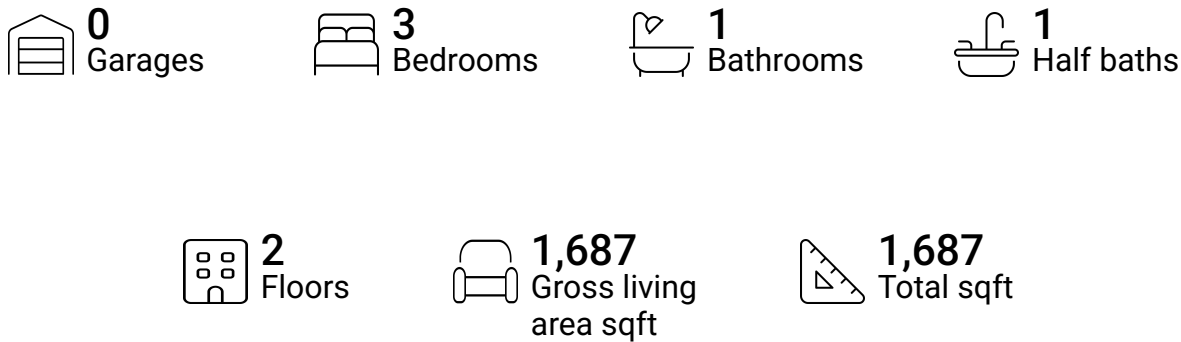


Home report

16100 Shirley Avenue, Maple Heights, Cuyahoga County, Ohio,
United States, 44137

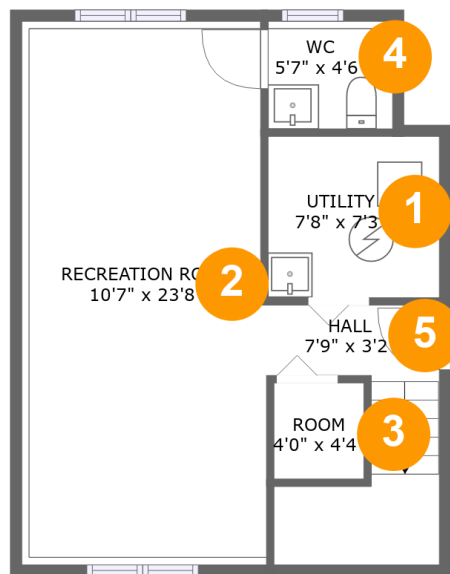


Property summary



Home report

16100 Shirley Avenue, Maple Heights, Cuyahoga County, Ohio,
United States, 44137



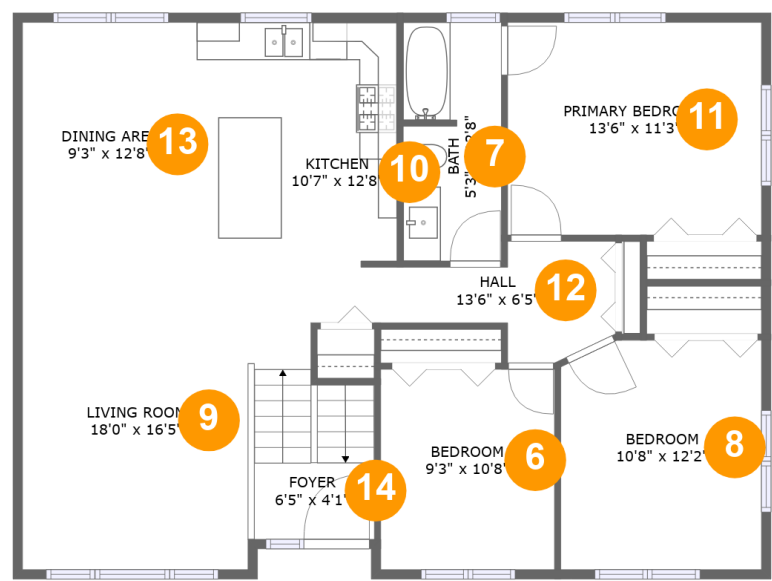
Room dimensions

Floor 1 Total sqft: 488 Living area: 488

#		Dimensions	sqft	Counted as living area
1	Utility	7'8" x 7'3"	55 sq. ft	Yes
2	Recreation Room	10'7" x 23'8"	263 sq. ft	Yes
3	Room	4'0" x 4'4"	17 sq. ft	Yes
4	WC	5'7" x 4'6"	27 sq. ft	Yes
5	Hall	7'9" x 3'2"	65 sq. ft	Yes

Home report

16100 Shirley Avenue, Maple Heights, Cuyahoga County, Ohio,
United States, 44137



Room dimensions

Floor 2 Total sqft: 1199 Living area: 1199

#		Dimensions	sqft	Counted as living area
6	Bedroom	9'3" x 10'8"	98 sq. ft	Yes
7	Bath	5'3" x 12'8"	65 sq. ft	Yes
8	Bedroom	10'8" x 12'2"	128 sq. ft	Yes
9	Living Room	18'0" x 16'5"	224 sq. ft	Yes
10	Kitchen	10'7" x 12'8"	134 sq. ft	Yes
11	Primary Bedroom	13'6" x 11'3"	152 sq. ft	Yes
12	Hall	13'6" x 6'5"	57 sq. ft	Yes
13	Dining Area	9'3" x 12'8"	117 sq. ft	Yes
14	Foyer	6'5" x 4'1"	58 sq. ft	Yes

1 Floor 1 - Utility



Dimensions: 7'8" x 7'3"
Area: 55 sq. ft
Counted as living area: Yes

Heated: Yes
Finished: Yes
Enclosed: Yes
Contiguous: Yes
Permitted: Yes
Wet space: No
Addition: No
Conversion: No

2 Floor 1 - Recreation Room



Dimensions: 10'7" x 23'8"
Area: 263 sq. ft
Counted as living area: Yes

Heated: Yes
Finished: Yes
Enclosed: Yes
Contiguous: Yes
Permitted: Yes
Wet space: No
Addition: No
Conversion: No

Home report

16100 Shirley Avenue, Maple Heights, Cuyahoga County, Ohio,
United States, 44137

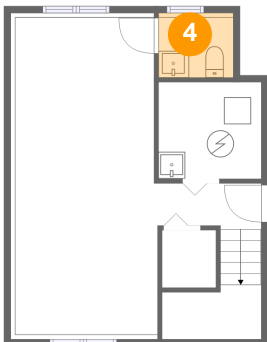
3 Floor 1 - Room



Dimensions: 4'0" x 4'4"
Area: 17 sq. ft
Counted as living area: Yes

Heated: Yes
Finished: Yes
Enclosed: Yes
Contiguous: Yes
Permitted: Yes
Wet space: No
Addition: No
Conversion: No

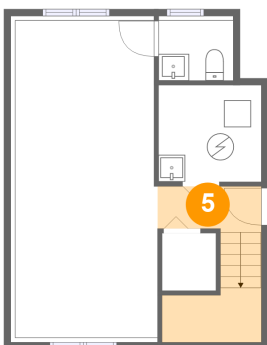
4 Floor 1 - WC



Dimensions: 5'7" x 4'6"
Area: 27 sq. ft
Counted as living area: Yes

Heated: Yes
Finished: Yes
Enclosed: Yes
Contiguous: Yes
Permitted: Yes
Wet space: Yes
Addition: No
Conversion: No

5 Floor 1 - Hall



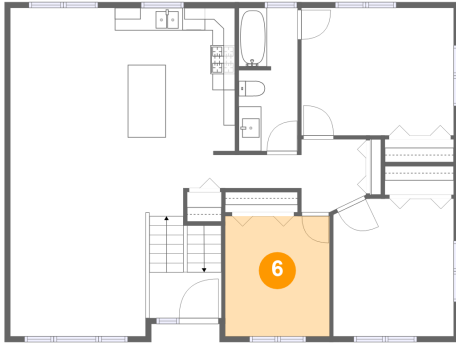
Dimensions: 7'9" x 3'2"
Area: 65 sq. ft
Counted as living area: Yes

Heated: Yes
Finished: Yes
Enclosed: Yes
Contiguous: Yes
Permitted: Yes
Wet space: No
Addition: No
Conversion: No

Home report

16100 Shirley Avenue, Maple Heights, Cuyahoga County, Ohio,
United States, 44137

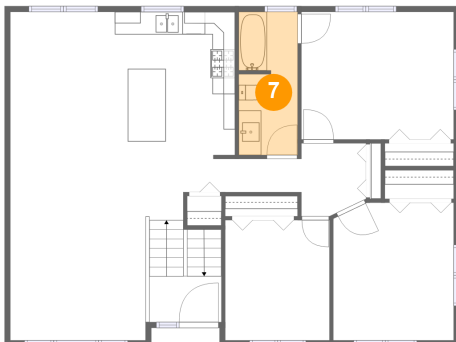
6 Floor 2 - Bedroom



Dimensions: 9'3" x 10'8"
Area: 98 sq. ft
Counted as living area: Yes

Heated: Yes
Finished: Yes
Enclosed: Yes
Contiguous: Yes
Permitted: Yes
Wet space: No
Addition: No
Conversion: No

7 Floor 2 - Bath



Dimensions: 5'3" x 12'8"
Area: 65 sq. ft
Counted as living area: Yes

Heated: Yes
Finished: Yes
Enclosed: Yes
Contiguous: Yes
Permitted: Yes
Wet space: Yes
Addition: No
Conversion: No

8 Floor 2 - Bedroom



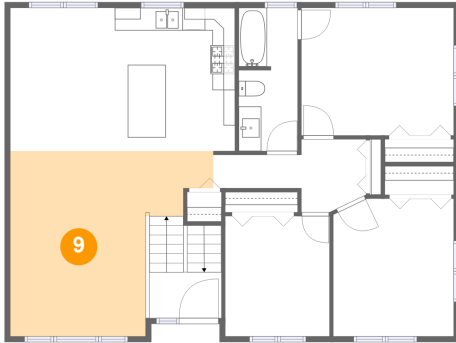
Dimensions: 10'8" x 12'2"
Area: 128 sq. ft
Counted as living area: Yes

Heated: Yes
Finished: Yes
Enclosed: Yes
Contiguous: Yes
Permitted: Yes
Wet space: No
Addition: No
Conversion: No

Home report

16100 Shirley Avenue, Maple Heights, Cuyahoga County, Ohio,
United States, 44137

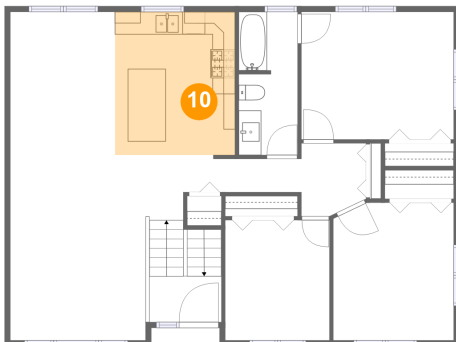
9 Floor 2 - Living Room



Dimensions: 18'0" x 16'5"
Area: 224 sq. ft
Counted as living area: Yes

Heated: Yes
Finished: Yes
Enclosed: Yes
Contiguous: Yes
Permitted: Yes
Wet space: No
Addition: No
Conversion: No

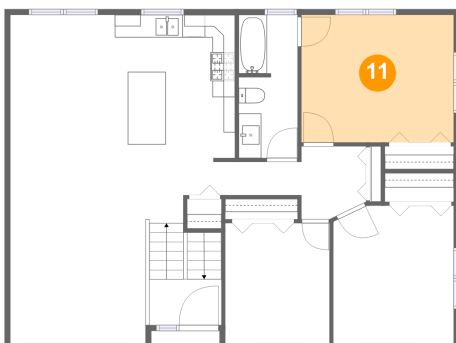
10 Floor 2 - Kitchen



Dimensions: 10'7" x 12'8"
Area: 134 sq. ft
Counted as living area: Yes

Heated: Yes
Finished: Yes
Enclosed: Yes
Contiguous: Yes
Permitted: Yes
Wet space: No
Addition: No
Conversion: No

11 Floor 2 - Primary Bedroom



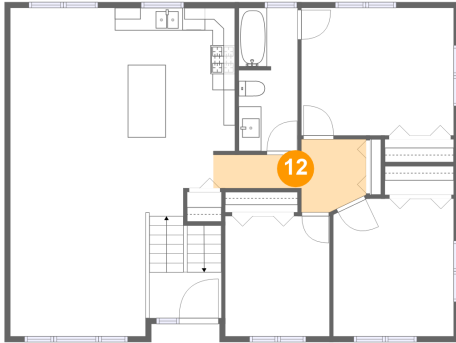
Dimensions: 13'6" x 11'3"
Area: 152 sq. ft
Counted as living area: Yes

Heated: Yes
Finished: Yes
Enclosed: Yes
Contiguous: Yes
Permitted: Yes
Wet space: No
Addition: No
Conversion: No

Home report

16100 Shirley Avenue, Maple Heights, Cuyahoga County, Ohio,
United States, 44137

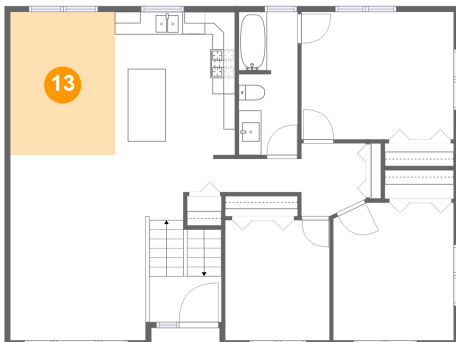
12 Floor 2 - Hall



Dimensions: 13'6" x 6'5"
Area: 57 sq. ft
Counted as living area: Yes

Heated: Yes
Finished: Yes
Enclosed: Yes
Contiguous: Yes
Permitted: Yes
Wet space: No
Addition: No
Conversion: No

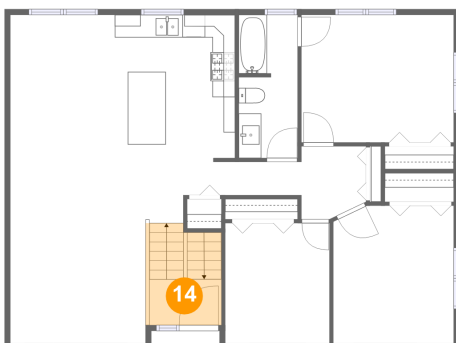
13 Floor 2 - Dining Area



Dimensions: 9'3" x 12'8"
Area: 117 sq. ft
Counted as living area: Yes

Heated: Yes
Finished: Yes
Enclosed: Yes
Contiguous: Yes
Permitted: Yes
Wet space: No
Addition: No
Conversion: No

14 Floor 2 - Foyer



Dimensions: 6'5" x 4'1"
Area: 58 sq. ft
Counted as living area: Yes

Heated: Yes
Finished: Yes
Enclosed: Yes
Contiguous: Yes
Permitted: Yes
Wet space: No
Addition: No
Conversion: No